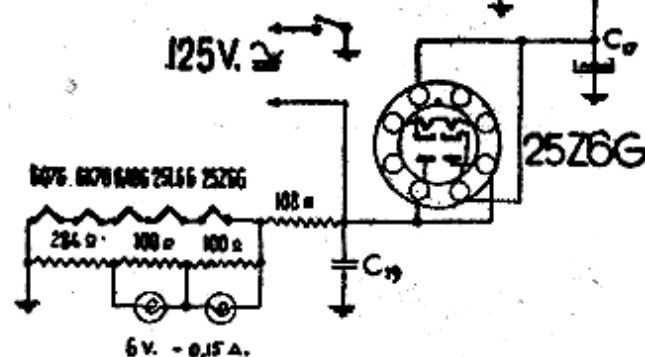


Resistencia	Condensadores	Observaciones
R ₁ 50.000 Ω ½ w.	C ₁001 MF mica	Todas las tensiones son tomadas a 125 V. de red. * Con el Voltahomyl.
R ₂ 300 " "	C ₂ C ₁₄0001 " "	
R ₃ 30.000 " "	C ₃ C ₁₆00025 " "	
R ₄ 15.000 " "	C ₄00475 " "	
R ₅ 100 " "	C ₅ C ₁₇01 " tubulares	
R ₆ 2.000 " "	C ₆05 " "	
R ₇ 1 MΩ ½ "	C ₇ C ₁₈01 " "	
R ₈ 5.000 Ω "	C ₈005 " "	
R ₉ 250.000 " ½ "	C ₉25 " "	
R ₁₀ 500.000 " ½ "	C ₁₀ 10. MF 30V electrol.	
R ₁₁ 150 " 1 "	C ₁₁ 25. " " "	
C.V. control de volumen	C ₁₂ 50. " 200V " "	
	C ₁₃ 25. " 185V. " "	
	T ₁ T ₂ T ₃ band de 4 trimers	
	R ₁₅ Padder normal	



Indicta mod. 480

ONDA/ Normal 535 - 4570 Kc
 Corfo 5850 - 10200 "

1F.467Kc