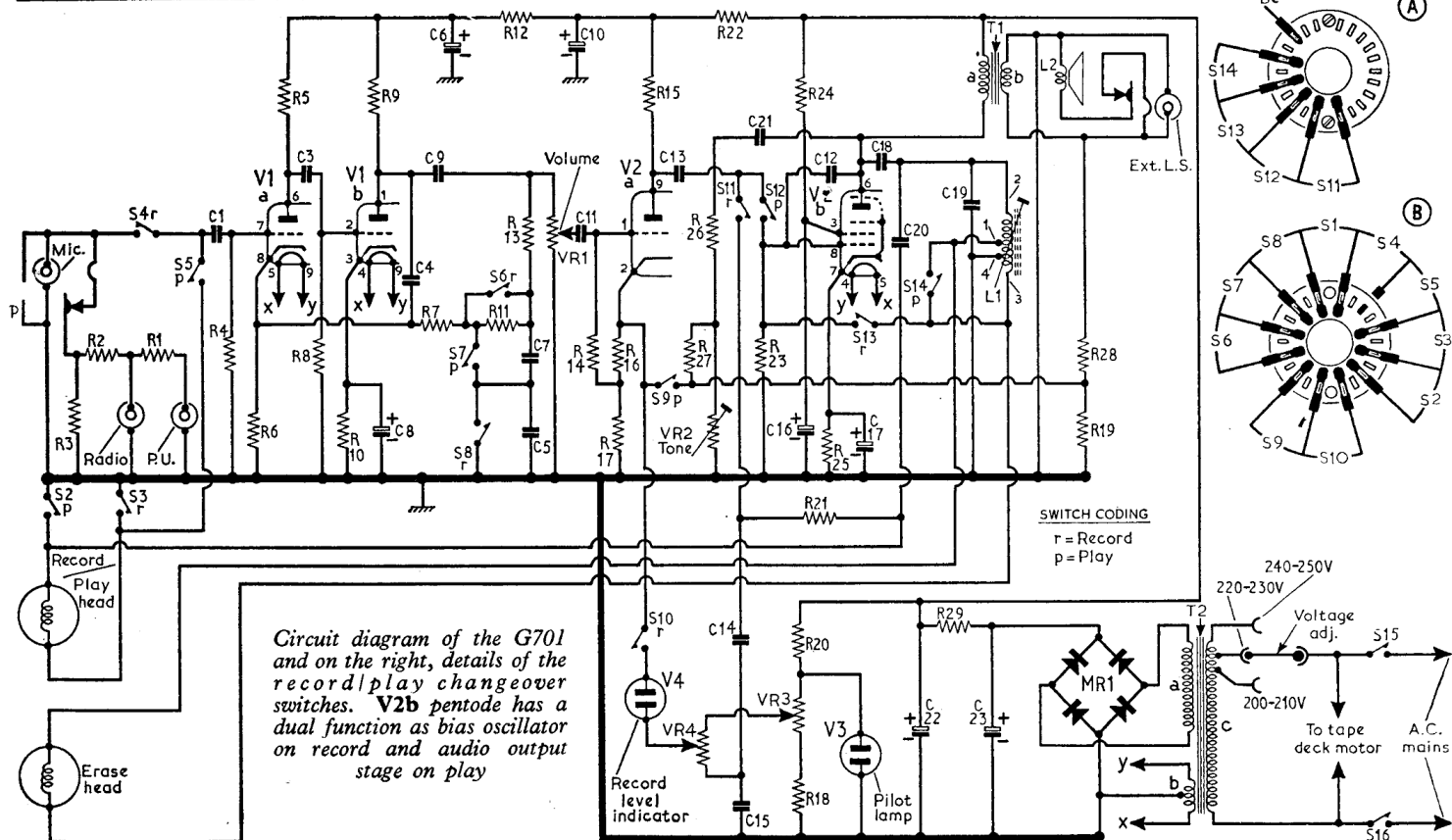


C	1 3 8 4 9,6 7,5 10,11 13 14,15,21 16, 12 17, 18,20,22 19,23													C
R	3 2 1	4 6 5 8 10 9 7	11,12,13,VR1	14, 16,17,15	27,VR4,26,VR2,22,23,24,20,VR3,18,21,25, 29	28 19	R							



Resistors

R1	2.2MΩ
R2	390kΩ
R3	56kΩ
R4	1MΩ
R5	330kΩ
R6	1kΩ
R7	180kΩ
R8	1MΩ
R9	150kΩ
R10	1.2kΩ
R11	4.7MΩ
R12	15kΩ
R13	180kΩ
R14	560kΩ
R15	120kΩ
R16	1.2kΩ
R17	3.3kΩ
R18	470kΩ
R19	4.7kΩ
R20	82kΩ
R21	180kΩ
R22	6.8kΩ
R23	560kΩ
R24	6.8kΩ
R25	180Ω

Capacitors

C1	0.1μF
C2	—
C3	0.01μF
C4	5.6pF
C5	300pF
C6	8μF
C7	600pF
C8	8μF
C9	0.047μF
C10	32μF
C11	0.02μF
C12	10pF
C13	0.1μF
C14	0.1μF
C15	82pF
C16	2μF

Miscellaneous

L1	12.5Ω
L2	3.0Ω
T1	{ a 500Ω b — c 180Ω }
T2	{ a 180Ω b — c 100Ω }
MR1	—
V3*	34H
V4*	3L
S1-S14	—
S15, S16	—

*Neon indicator.

VALVE ANALYSIS

Valve voltages given in the table below were derived from information supplied by the manufacturer. They were measured on a 20,000 Ω/V meter. Oscillator voltages measured with a valve voltmeter at the oscillator coil terminals are as follows:

- Between tag 1 and chassis—22V.
- Between tag 2 and chassis—90V.
- Between tag 3 and chassis—4.5V.

Valve Table

Valve	Anode (V)	Screen (V)	Cathode (V)
V1a ECC83	75	—	0.44
V1b ECC83	116	—	0.85
V2a ECL86	147	—	3.8
V2b ECL86	128	—	2.0
	246	209	6.4
	246	231	6.1

*Recorder switched to record.
†Recorder switched to play.



GEC - G701