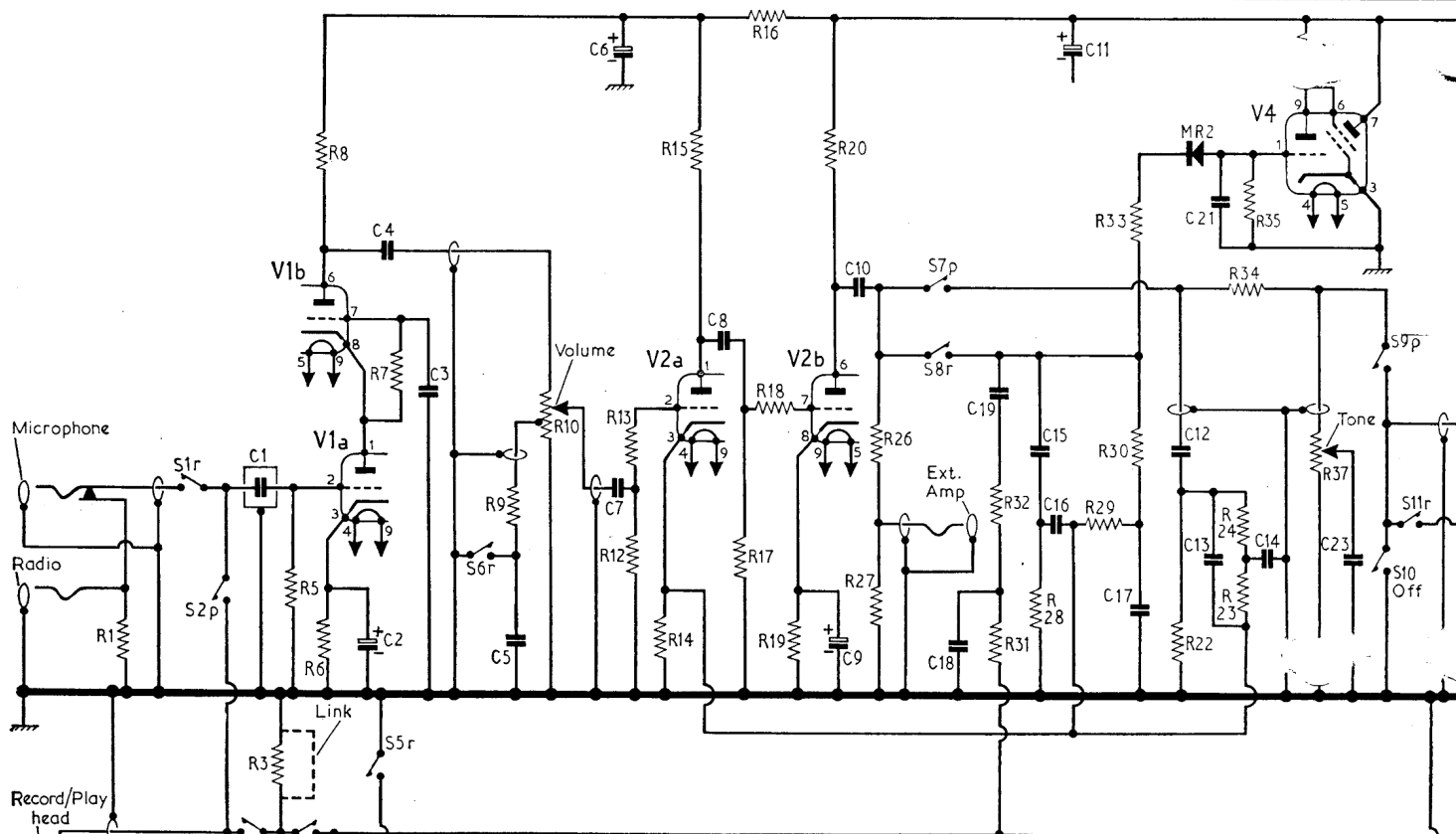
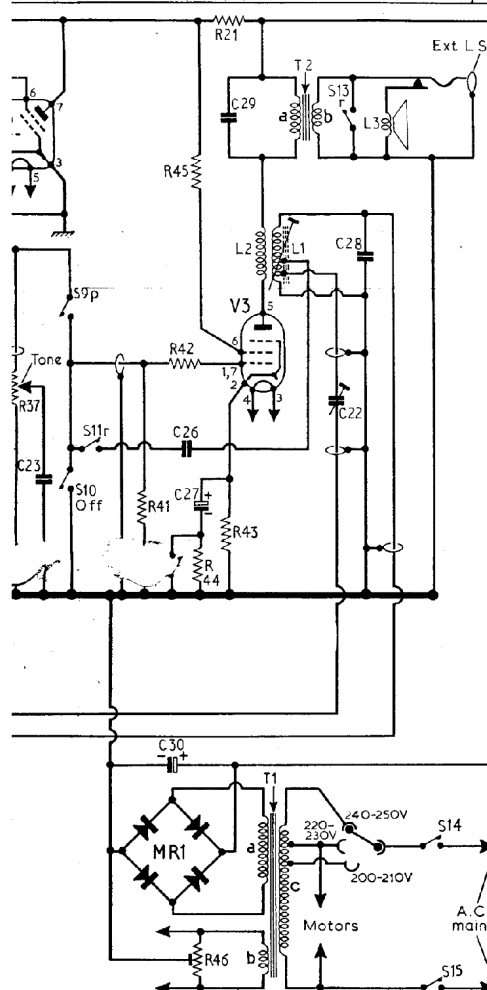


C	1	2	4	3	5	7,6	8	9,10	18	19	15,16,11	17	12	13,21	14	23
R	1	3,5	8,6	7	9	10	12,13,14	15	17	16,18,19	20	26,27	31,32,28	29	33,30,22	34,35,24,23,36,37



23	30,26,27	29	22	28	C
36,37	41	42,43,44,46,21,43			R



Resistors

R1	100kΩ
R3	1kΩ
R5	2.2MΩ
R6	1kΩ
R7	1MΩ
R8	47kΩ
R9	47kΩ
R10	1MΩ
R12	1MΩ
R13	4.7kΩ
R14	3.3kΩ
R15	220kΩ
R16	18kΩ
R17	1MΩ
R18	1kΩ
R19	1kΩ
R20	56kΩ
R21	10kΩ
R22	150kΩ
R23	100kΩ
R24	100kΩ
R26	150kΩ
R27	33kΩ
R28	100kΩ
R29	180kΩ
R30	180kΩ
R31	150kΩ
R32	68kΩ
R33	150kΩ
R34	150kΩ
R35	10MΩ
R36	470kΩ
R37	1MΩ
R41	470kΩ
R42	4.7kΩ
R43	330Ω
R44	15kΩ
R45	47Ω
R46	100Ω

Capacitors

C1	0.01μF
C2	50μF
C3	0.02μF
C4	0.01μF
C5	5,000pF
C6	16μF
C7	0.01μF
C8	0.01μF
C9	10μF
C10	0.05μF
C11	50μF
C12	2,000pF
C13	12pF
C14	1,000pF
C15	82pF
C16	82pF
C17	180pF
C18	100pF
C19	0.04μF
C21	0.1μF
C22	110pF
C23	2,000pF
C26	470pF
C27	50μF
C28	1,800pF
C29	2,000pF
C30	50μF

Valve Table

Valve	Anode (V)	Screen (V)	Cathode (V)
V1 ECC83	95	—	0.5
	175	—	95.0
V2 ECC83	114	—	1.15
	147	—	1.0
V3 EL95	285	214	8.5
V4 EM85	16	—	—

MURPHY - TR1