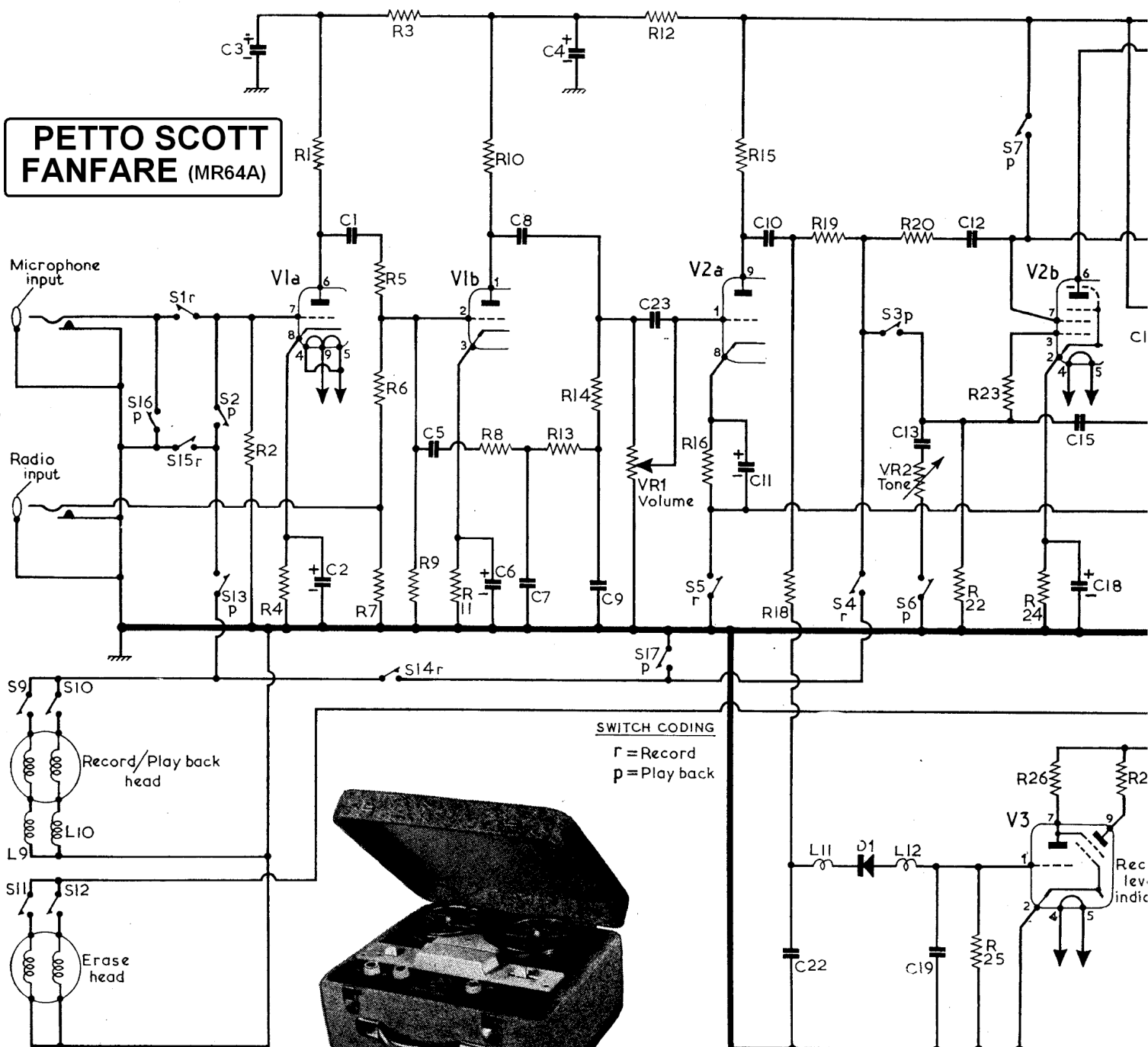
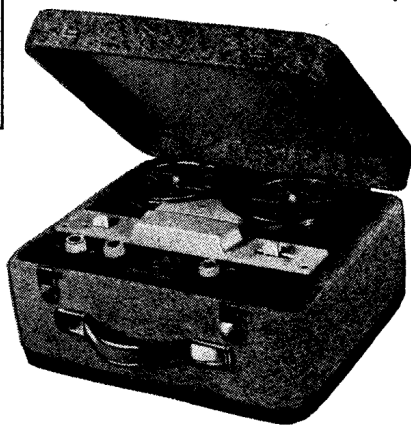


# PETTO SCOTT FANFARE (MR64A)



## SWITCH CODING

r = Record  
p = Playback



## Resistors

|     |       |
|-----|-------|
| R1  | 220kΩ |
| R2  | 2.2MΩ |
| R3  | 47kΩ  |
| R4  | 2.2kΩ |
| R5  | 470kΩ |
| R6  | 1MΩ   |
| R7  | 1MΩ   |
| R8  | 1.5MΩ |
| R9  | 1MΩ   |
| R10 | 220kΩ |
| R11 | 2.2kΩ |
| R12 | 47kΩ  |
| R13 | 560kΩ |
| R14 | 560kΩ |
| R15 | 100kΩ |
| R16 | 1.5kΩ |
| R17 | 180Ω  |
| R18 | 150kΩ |
| R19 | 100kΩ |
| R20 | 47kΩ  |
| R21 | 2.2kΩ |
| R22 | 680kΩ |
| R23 | 22kΩ  |
| R24 | 390Ω  |
| R25 | 3.3MΩ |
| R26 | 560kΩ |
| R27 | 1kΩ   |
| R28 | 100kΩ |
| VR1 | 500kΩ |
| VR2 | 1MΩ   |
| VR3 | 500Ω  |

## Capacitors

|     |         |
|-----|---------|
| C1  | 0.03μF  |
| C2  | 100μF   |
| C3  | 16μF    |
| C4  | 16μF    |
| C5  | 100μF   |
| C6  | 100μF   |
| C7  | 56pF    |
| C8  | 0.03μF  |
| C9  | 56pF    |
| C10 | 0.03μF  |
| C11 | 100μF   |
| C12 | 250pF   |
| C13 | 0.03μF  |
| C14 | 3,300pF |
| C15 | 680pF   |
| C16 | 0.03μF  |
| C17 | 2,000pF |
| C18 | 50μF    |
| C19 | 0.1μF   |
| C20 | 32μF    |
| C21 | 32μF    |
| C22 | 220pF   |
| C23 | 100pF   |

## Coils\*

|     |       |
|-----|-------|
| L1  | 7.5   |
| L2  | 2.5   |
| L3  | 2.25  |
| L4  | 260.0 |
| L5  | —     |
| L6  | 200.0 |
| L7  | —     |
| L8  | 72.0  |
| L9  | —     |
| L10 | —     |
| L11 | —     |
| L12 | —     |
| L13 | 2.5   |

## TECHNICAL SPECIFICATION As supplied by the Manufacturer

**Output.**—3 watts.  
**Tape Speed.**—3½ in./sec.  
**Total Wow/Flutter.**—Less than 0.3 per cent.  
**Recording Level Indicator.**—Magic Eye.  
**Frequency Response.**—100 c/s-7,000 c/s within 4dB.  
**Recording Sense.**—1 and 3 track, left to right. 2 and 4 track, right to left.  
**Mains Voltage.**—200-250V.  
**Average Consumption.**—36 Watts.

## SERVICE NOTES Adjustment of L1/L2

The core of L1/L2 should be adjusted for an output of more than 30V across the erase heads. It should be carried out using an A.C. valve voltmeter connected across the appropriate erase winding with the recorder switched to record.

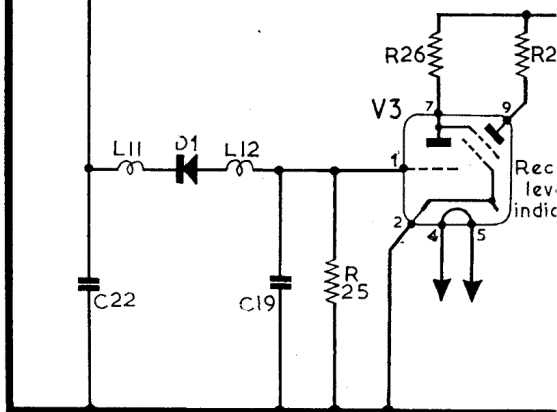
## Adjustment of L9 and L10

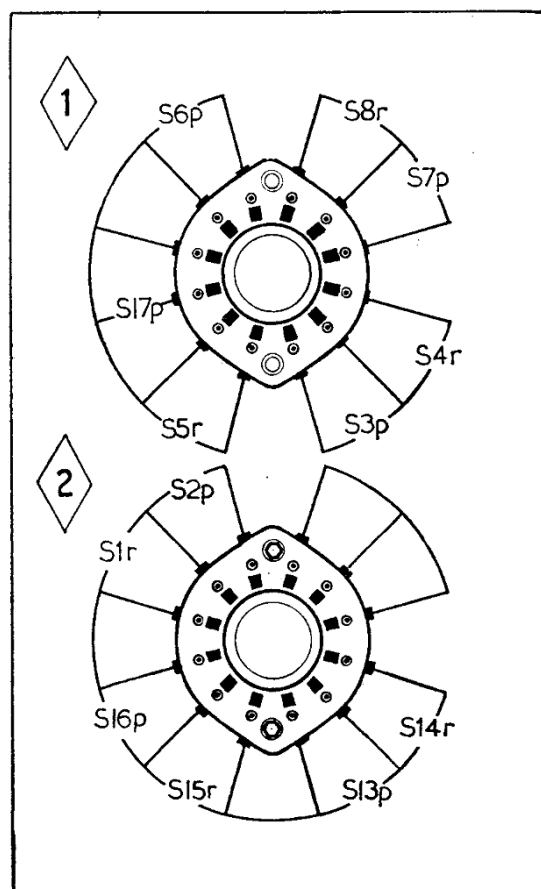
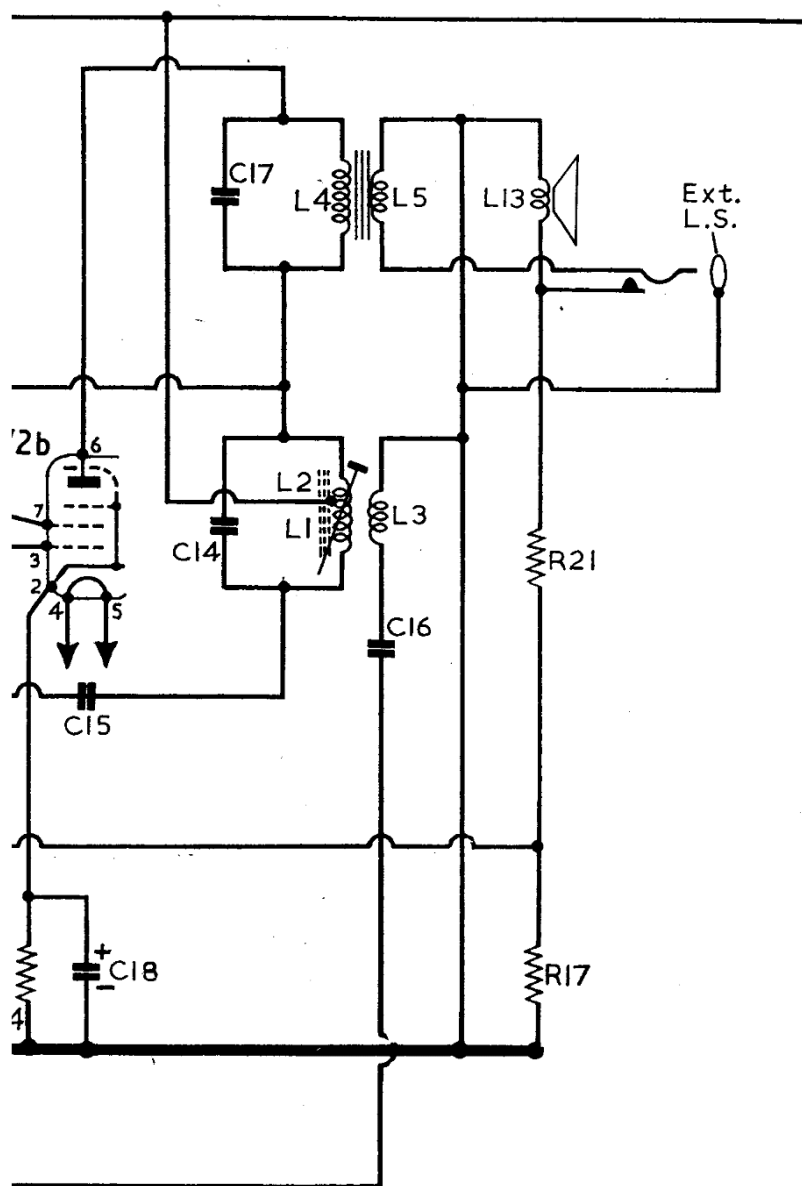
Switch to playback and turn the volume control to maximum output. Select tracks 1 and 4 and bend the alloy bracket to position L9 for minimum hum. Select tracks 2 and 3, and similarly adjust L10.

## Switches

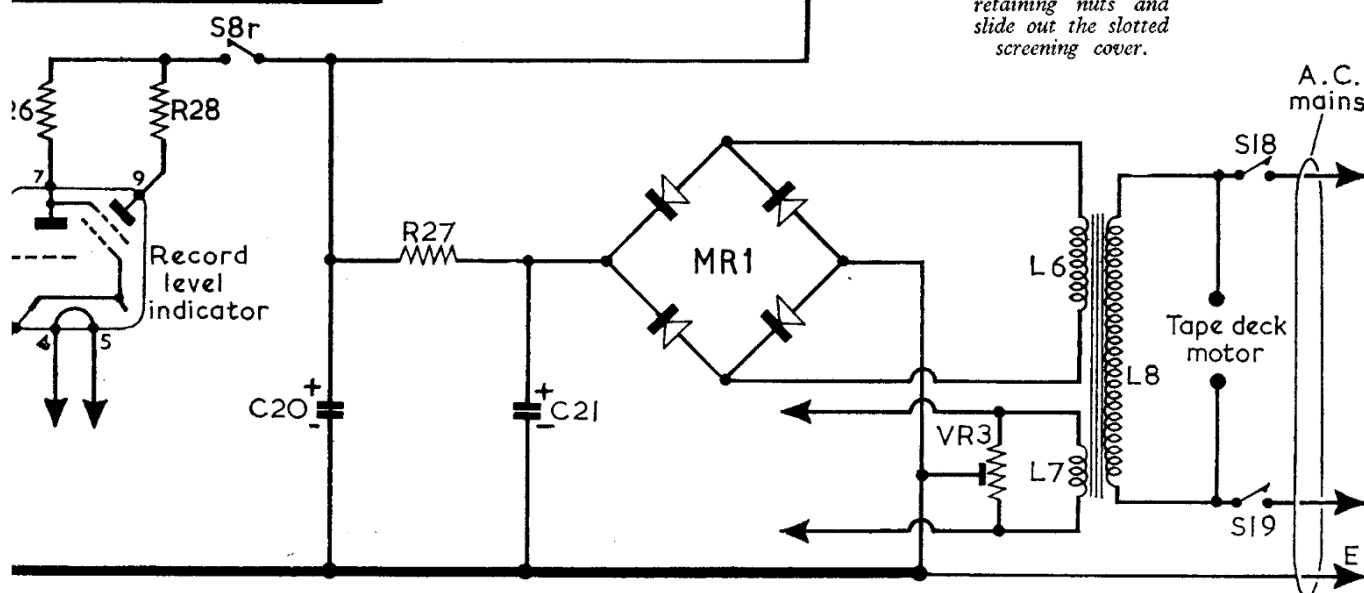
S1-S8 and S13-S17 are the record/playback changeover switches. They are housed in a rotary unit shown in location reference E5 and are operated by the record/playback control on the tape deck. An enlarged diagram of the switch contacts is given in col. 6. In this diagram and on the circuit diagram, suffix letter r indicates the switch closes on record and suffix letter p indicates the switch closes on playback.

S9-S12 are the track switches which are contained in a four-pole two-way





Record / playback  
changeover switches  
as they appear when  
observed from the  
same position as the  
general view at the  
top of this page.  
For access to the  
lower wafer (2)  
slacken but do not  
remove the switch  
retaining nuts and  
slide out the slotted  
screening cover.



**PETTO SCOTT**  
**FANFARE (MR64A)**