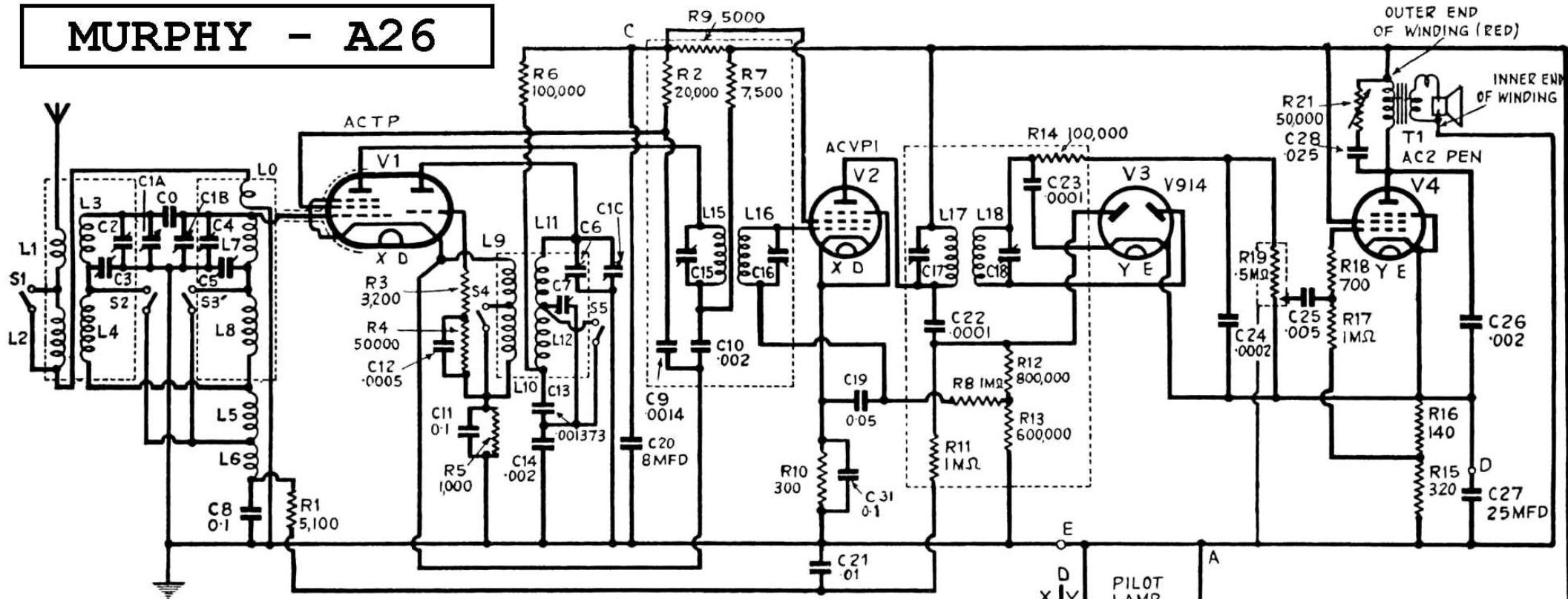
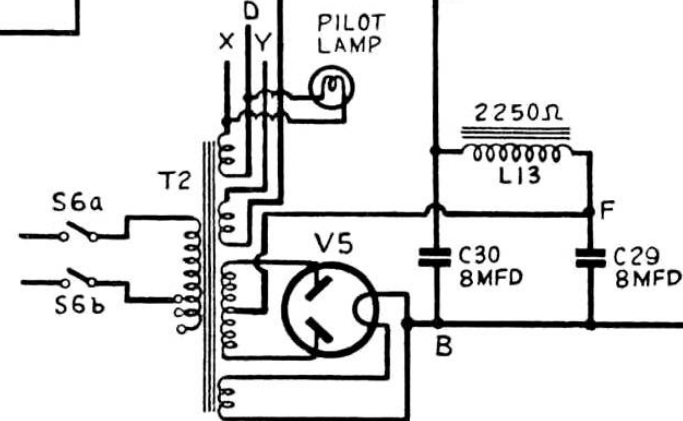


# MURPHY - A26



Values and Functions of Components not given in the Diagram

CONDENSERS		INDUCTANCES		TRANSFORMERS		
No.	CAPACITY	No.	D.C. RESISTANCE	No. & MODEL	WINDING	RESISTANCE
C0	2 $\mu$ f.	L0	0.25 $\Omega$	T2	PRIMARY	200.214v. 24 $\Omega$
C1A	.0005 $\mu$ f.	L1	1.0 $\Omega$			215.232v. 26 $\Omega$
C1B	.0005 $\mu$ f.	L2	7.0 $\Omega$			233.250v. 29 $\Omega$
C1C	.0005 $\mu$ f.	L3	5.0 $\Omega$	T2	H.T. Sec.	255-255 $\Omega$
C2	10/50 $\mu$ f.	L4	12.0 $\Omega$			
C3	10/80 $\mu$ f.	L5	2.75 $\Omega$			
C4	10/50 $\mu$ f.	L6	0.75 $\Omega$	T2	PRIMARY	100.108v. 5.5 $\Omega$
C5	10/80 $\mu$ f.	L7	5.0 $\Omega$			109.120v. 6.0 $\Omega$
C6	10/50 $\mu$ f.	L8	12.0 $\Omega$			255-255 $\Omega$
C7	10/80 $\mu$ f.	L9	1.0 $\Omega$	T2	H.T. Sec.	
C15	70/140 $\mu$ f.	L10	2.5 $\Omega$			
C16	70/140 $\mu$ f.	L11	4.0 $\Omega$			
C17	70/140 $\mu$ f.	L12	8.0 $\Omega$	T1	PRIMARY	200.214v. 36 $\Omega$
C18	70/140 $\mu$ f.	L13	2400 $\Omega$			215.232v. 39 $\Omega$
		L15	40 $\Omega$			233.250v. 43 $\Omega$
		L16	40 $\Omega$	L.S.	SPEECH COIL	398-398 $\Omega$
		L17	40 $\Omega$			
		L18	40 $\Omega$			



ALL RESISTANCE VALUES ARE IN OHMS AND CONDENSER VALUES ARE IN MICROFARADS UNLESS OTHERWISE STATED. BLOCK LETTERS, A.B.C., ETC., REFER TO THE POSITION OF SOLDER TAGS IN CONDENSER BLOCK W.2030.