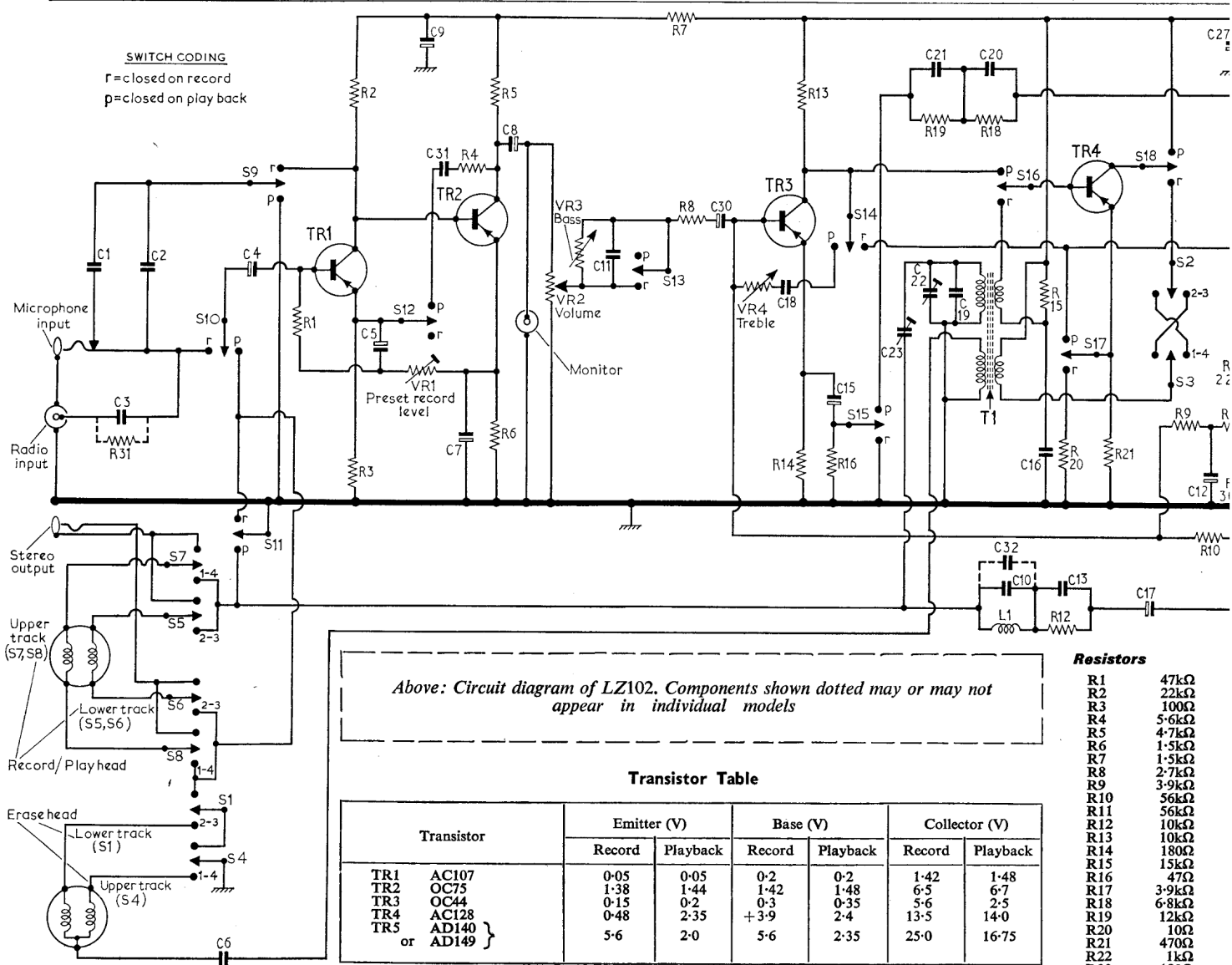


C	1	3	2	6	4	5	9	31	7	8	11	30	18	15	23	22,21,19	20	32,10	16	13	17	12			
R	31					1	2	3	VR1	4	5,6	VR2	VR3	7	8	VR4	13,14	16	19	18	15	12,20	21	9	10



Resistors

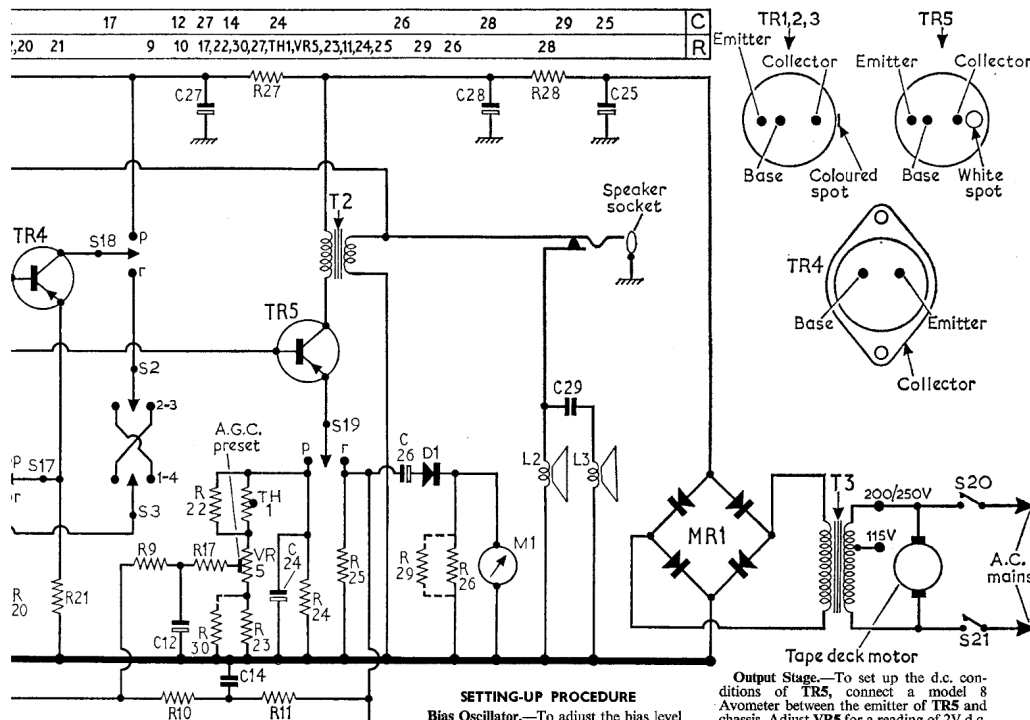
R1	47kΩ
R2	22kΩ
R3	100Ω
R4	5.6kΩ
R5	4.7kΩ
R6	1.5kΩ
R7	1.5kΩ
R8	2.7kΩ
R9	3.9kΩ
R10	56kΩ
R11	56kΩ
R12	10kΩ
R13	10kΩ
R14	180Ω
R15	15kΩ
R16	47Ω
R17	3.9kΩ
R18	6.8kΩ
R19	12kΩ
R20	10Ω
R21	470Ω
R22	1kΩ
R23	180Ω
R24	2.5Ω
R25	1kΩ
R26	15kΩ
R27	220Ω
R28	2.5Ω
R29*	33kΩ
R30*	180Ω
R31*	8.2MΩ
VR1	200kΩ
VR2	10kΩ
VR3	100kΩ
VR4	250kΩ
VR5	100Ω

Capacitors

C1	0.02μF	D4
C2	3,300pF	D4
C3	150pF	B1
C4	10μF	D4
C5	64μF	D4
C6	0.01μF	±
C7	250μF	E4
C8	25μF	E4
C9	250μF	E4
C10	1,000pF	E4
C11	0.047μF	B1
C12	10μF	D4
C13	1,000pF	F4
C14	470pF	E4
C15	10μF	F4
C16	0.01μF	F4
C17	2.5μF	F4
C18	0.01μF	E4
C19	2,000pF	B1
C20	1,000pF	B1
C21	0.047μF	B1
C22	450pF	B1
C23	80pF	C2
C24	5,000μF	C2
C25	2,000μF	F4
C26	25μF	F4
C27	2,000μF	B2
C28	2,000μF	C2
C29	1μF	**
C30	10μF	E4
C31	0.02μF	E4
C32*	100pF	E4

Coils

L1	—	E4
L2	—	†
L3	—	B2
T1	—	A3
T3	—	C3



ELIZABETHAN
LZ102