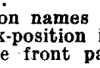
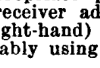
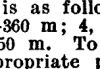
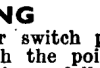
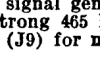
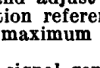
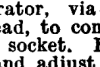
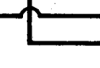
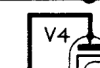
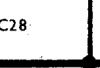
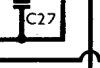
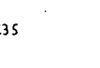
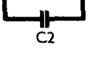
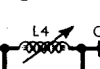
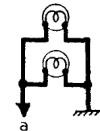


EKCO - RADIOTIME

Intermediate frequency 465 kc/s.

SCALE LAMPS



RESISTORS		Values (ohms)	Locations
R1	V1 S.G. H.T. feed ...	33,000	G5
R2	V1 hex. C.G. ...	680,000	J10
R3	V1 osc. C.G. ...	47,000	H6
R4	Osc. H.T. feed ...	33,000	H5
R5	V2 S.G. resistor ...	82,000	G5
R6	V2 H.T. decoup. ...	2,200	F5
R7	I.F. stopper ...	47,000	F5
R8	A.V.C. decoupling ...	1,000,000	F7
R9	Sig. diode load ...	680,000	F5
R10	Volume control ...	1,000,000	E5
R11	V3 C.G. stopper ...	10,000	F7
R12	V3 G.B. and A.V.C. {	180	E7
R13		220	E7
R14	V1, V2 fixed G.B. feed ...	6,800,000	F6
R15	A.V.C. diode load ...	1,000,000	F6
R16	V1, V2 fixed G.B. ...	220	F6
R17	Feed-back potential divider ...	47,000	E6
R18		10,000	E6

Valve	Anode Voltage (V)	Anode Current (mA)	Screen Voltage (V)	Screen Current (mA)
V1 ECH35	230	4.0	95	4.0
V2 6X5	105	3.8	70	1.7
V3 6BL21	216	5.2	230	3.0
V4 6Z35	250†	—	—	—

† Each anode, A.C.

RADIO/ALARM MANUAL ON-OFF

S27 S28

RELAY CONTACTS S26

BROWN

BLUE

GREEN

"OFF" S24

"ON" S25

BLACK

CLOCK

BLACK

AC MAINS

T2

L18

RELAY COIL

L17

R14

R16

R13

R15

C28

C29

R12

C25

C26

R11

C24

R9

C23

R10

R17

C27

C22

C21

C20

C19

C18

C17

C16

C15

C14

C13

C12

C11

C10

C9

C8

C7

C6

C5

C4

C3

C2

C1

C0

C-1

C-2

C-3

C-4

C-5

C-6

C-7

C-8

C-9

C-10

C-11

C-12

C-13

C-14

C-15

C-16

C-17

C-18

C-19

C-20

C-21

C-22

C-23

C-24

C-25

C-26

C-27

C-28

C-29

C-30

C-31

C-32

C-33

C-34

C-35

C-36

C-37

C-38

C-39

C-40

C-41

C-42

C-43

C-44

C-45

C-46

C-47

C-48

C-49

C-50

C-51

C-52

C-53

C-54

C-55

C-56

C-57

C-58

C-59

C-60

C-61

C-62

C-63

C-64

C-65

C-66

C-67

C-68

C-69

C-70

C-71

C-72

C-73

C-74

C-75

C-76

C-77

C-78

C-79

C-80

C-81

C-82

C-83

C-84

C-85

C-86

C-87

C-88

C-89

C-90

C-91

C-92

C-93

C-94

C-95

C-96

C-97

C-98

C-99

C-100

C-101

C-102

C-103

C-104

C-105

C-106

C-107

C-108

C-109

C-110

C-111

C-112

C-113

C-114

C-115

C-116

C-117

C-118

C-119

C-120

C-121

C-122

C-123

C-124

C-125

C-126

C-127

C-128

C-129

C-130

C-131

C-132

C-133

C-134

C-135

C-136

C-137

C-138

C-139

C-140

C-141

C-142

C-143

C-144

C-145

C-146

C-147

C-148

C-149

C-150

C-151

C-152

C-153

C-154

C-155

C-156

C-157

C-158

C-159

C-160

C-161

C-162

C-163

C-164

C-165

C-166

C-167

C-168

C-169

C-170

C-171

C-172

C-173

C-174

C-175</