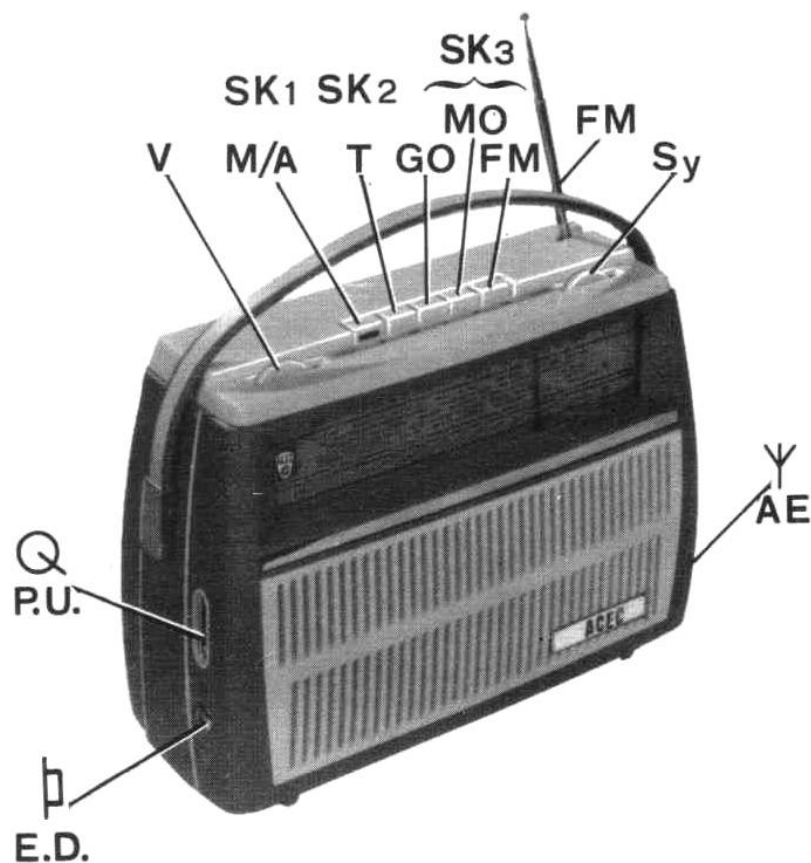


RADIO ACEC TYPE 5160





Interrupteur Marche-Arrêt

Commande de tonalité

Commutateur GO

Commutateur PO

Commutateur FM

Réglage du volume sonore

Syntonisation

Haut-parleur AD 3416 SZ (8Ω)

Réglage des MF : 452 kHz

Piles 9 V (6x1,5 V)

Consommation : 25 mA (0,1 W max.)

Puissance max. : 600 mW

Dimensions : 250x160x90 mm

Gammes d'ondes : GO — 147 à 410 kHz (2040 à 732 m)

PO — 510 à 1620 kHz (588 à 185 m)

FM — 87,5 à 101 MHz

Transistors TR1 : AF 114

TR2 : AF 115

TR3 : AF 116

TR4 : AF 116

TR5 : AF 116

TR6 : OC 75

TR7 : OC 75

TR8-9 : 2xOC 74



Diodes X2 : OA 79

X3 : OA 79

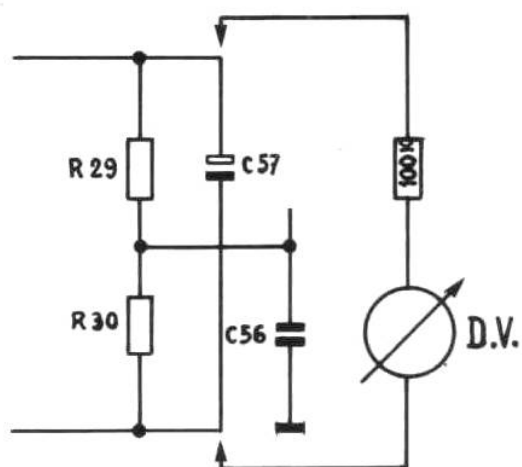
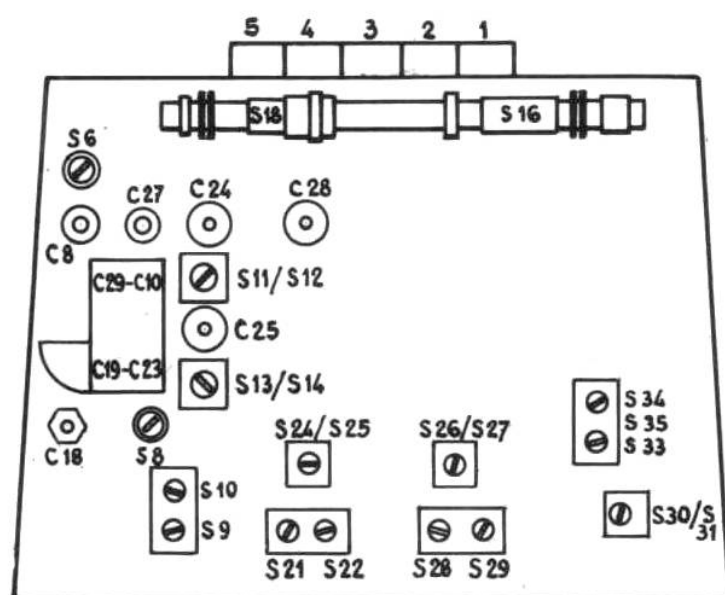
X4 : OA 79

X5 : OA 79

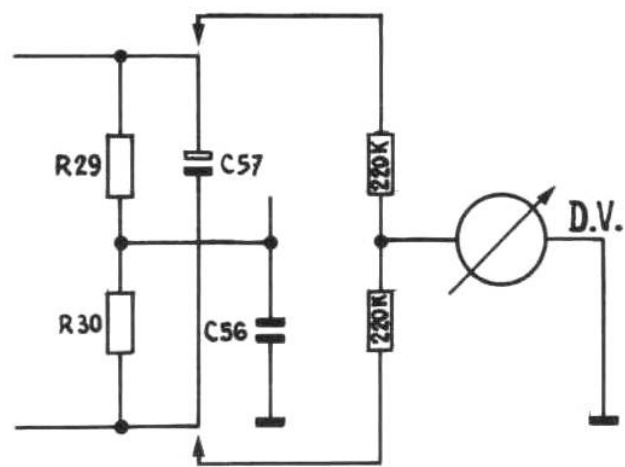
X6 : OA 79

		Poussoirs	Points de réglage	Signal	Régler	Indications
AM	MF	PO 4	185 m	452 kHz via 3300 pF \Rightarrow b — TR5 \Rightarrow b — TR4 \Rightarrow b — TR3	S30 S28—S29 S24	Puissance max.
	HF	PO 4	500 m 200 m	600 kHz \Rightarrow Y 1500 kHz \Rightarrow Y	S11—S16 C24—C27	Puissance max.
		GO 3	1800 m 900 m	168 kHz \Rightarrow Y 333 kHz \Rightarrow Y	S13—S18 C25—C28	
FM	MF	FM 5	100 MHz	10,7 MHz via 1500 pF \Rightarrow b — TR5 \Rightarrow b — TR4 \Rightarrow b — TR3 \Rightarrow b — TR2	S33 S34 S26 S21—S22 S9—S10	max. DV ⁽¹⁾ 0 volt DV ⁽²⁾ max. DV ⁽¹⁾ max. DV ⁽¹⁾ max. DV ⁽¹⁾
	HF	FM 5	88 MHz 100 MHz	88 MHz \Rightarrow  (70Ω) 100 MHz \Rightarrow  (70Ω)	S8—S6 C18—C8	Puissance max.

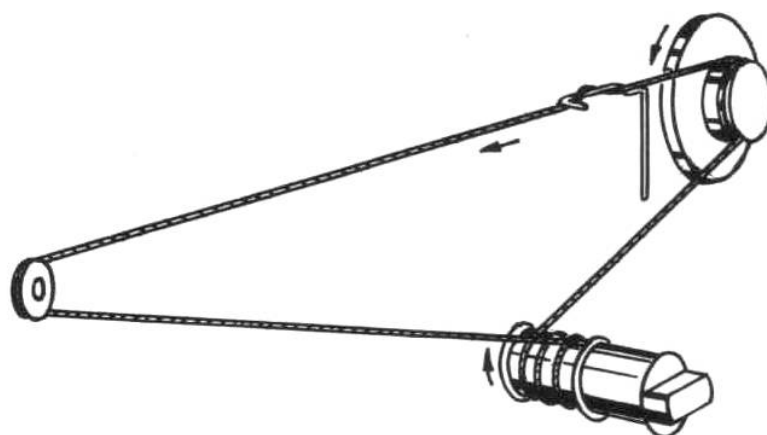
(1) Schéma 1 ci-contre
(2) Schéma 2 ci-contre

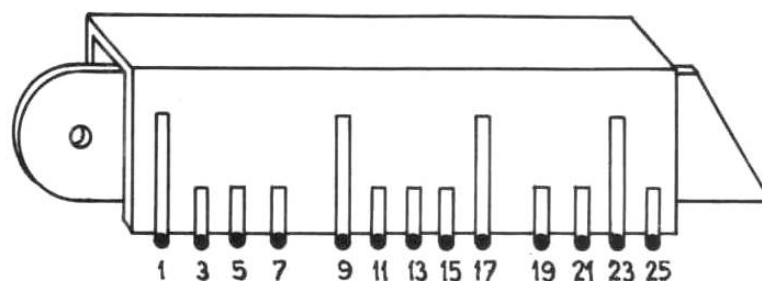


1



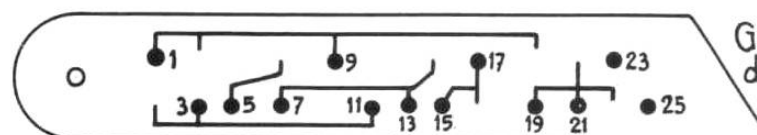
2





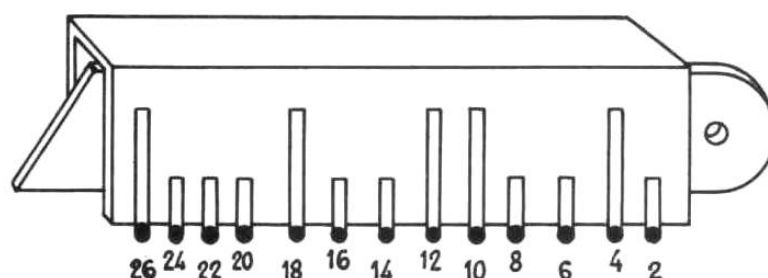
Barrette coté C.V.

Staafe kant draaicondensator (D.C.)



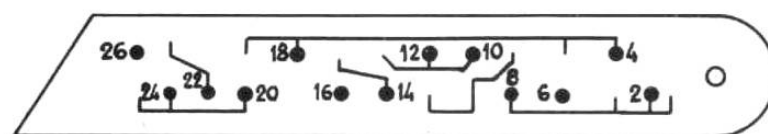
Glenf kant draaicondensator. (D.C.)

Glissière coté CV : en position MO : in positie MG
 en position GO ← : in positie LG ←
 en position FM → : in positie MF →



Barrette coté H.P.

Staafe kant Luidspreker (L.S.)



Glenf kant Luidspreker (L.S.)

Glissière coté H.P. : en position MO : in positie M.G
 en position GO → : in positie LG →
 en position FM ← : in positie MF ←

Commutateur SK3

Les contacts fixes	De vaste contacten	en GO	in LG	en MO	in MG	en FM	in MF
		sont en rapport avec... geven contact met...					
Coté CV Kant DC	9	—		1		7	
	11	5		3			
	13	15		7		3 et 5 en	
	17	1		15		15	
	21	19		19		23 et 25 en	
Coté HP Kant LS	2	6		8		6	
	10	12		12		14	
	18	4		4		16	
	24	22		20		26	

SK3

AIGU
GRAVE

SCHERPE TONEN
LAGE TONEN

MARCHE AAN
ARRET UIT

FM MF

MO MG

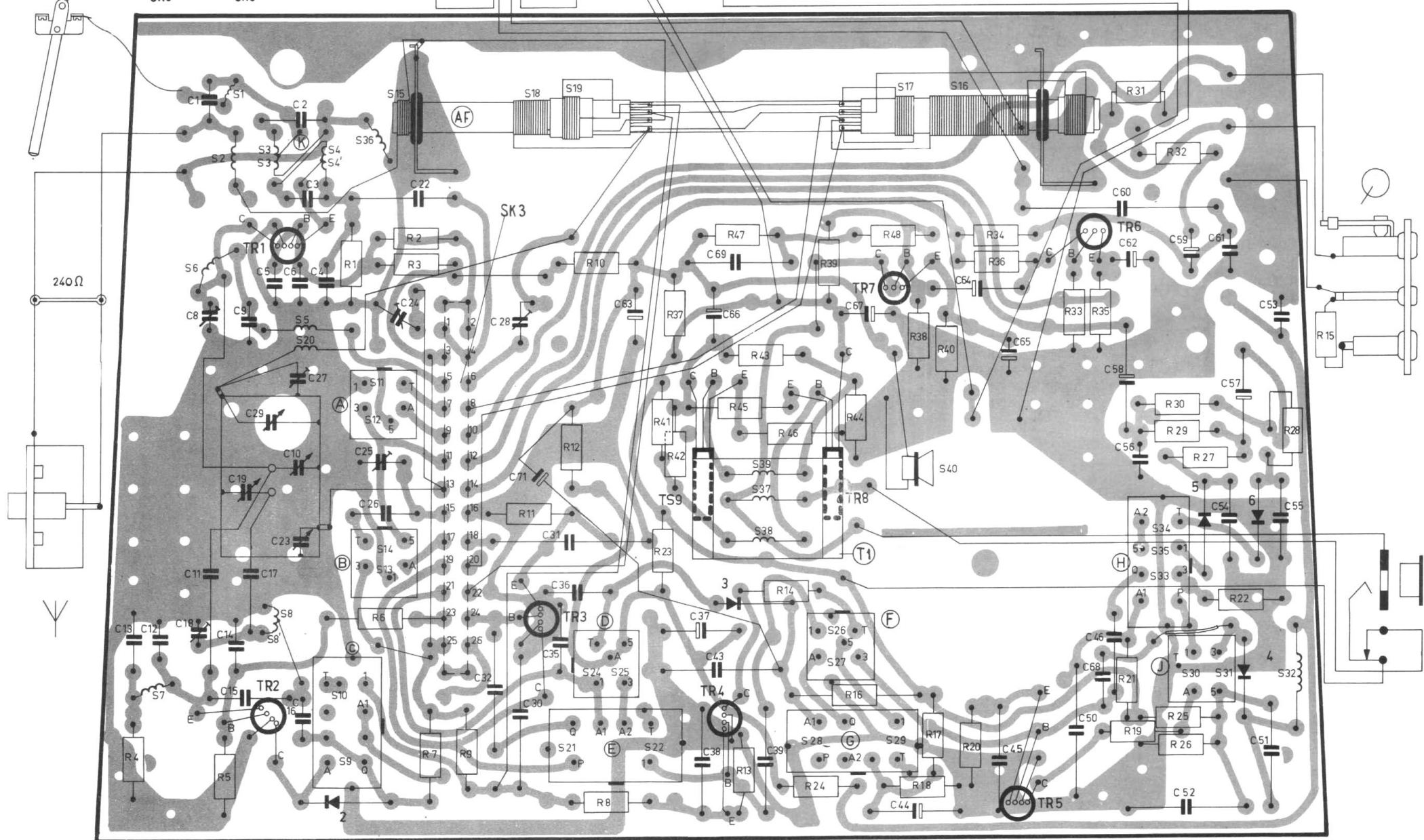
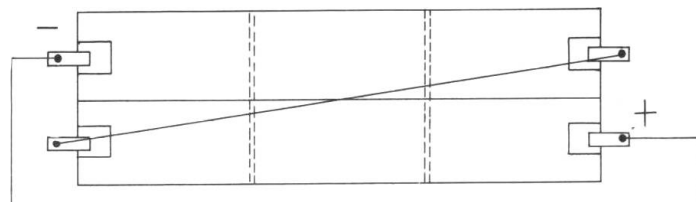
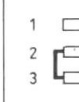
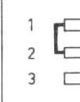
GO LG

SK 2

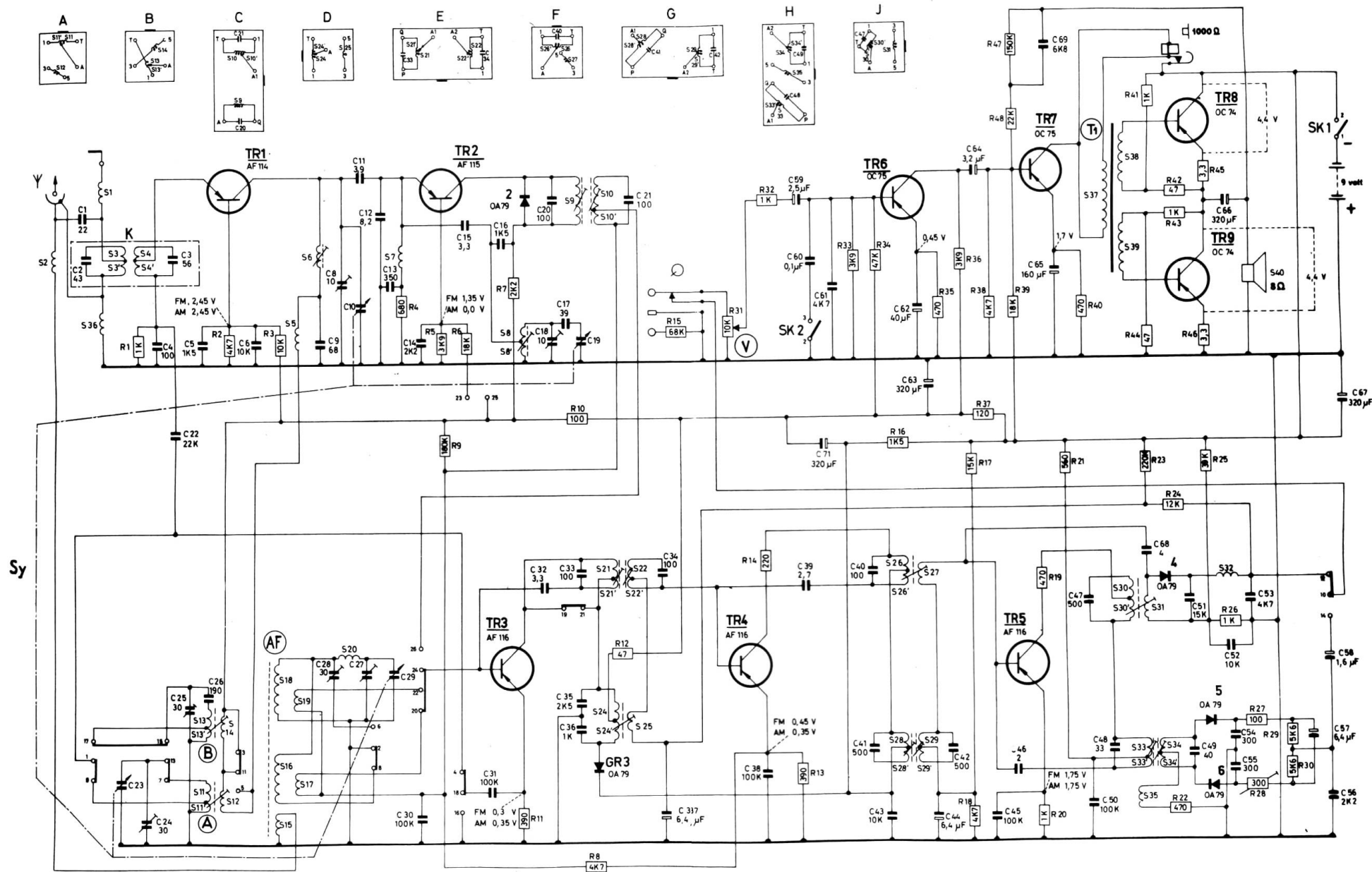
SK 1

STAAFJE
VAN
WALSSCHAKELAAR
SK3

BARRETTE
DU
COMBINAATEUR
SK3



S	2, 36, 1, 3, 3', 13, 13', 11, 11', 12, 14, 15, 5, 17, 19, 7, 8, 8', 9, 21, 21', 24, 24', 10, 10', 22, 22', 25, 26, 26', 28, 28', 27, 29, 29', 37, 33, 33', 39, 39, 31, 30, 30', 38, 34, 34', 32, 40, 57, 67, 56, 58,
C	1, 23, 25, 3, 5, 4, 24, 22, 26, 6, 28, 8, 10, 12, 14, 30, 15, 31, 16, 32, 18, 20, 36, 17, 33, 35, 19, 21, 34, 37, 38, 59, 39, 61, 71, 41, 43, 62, 44, 42, 64, 45, 65, 69, 47, 48, 50, 68, 51, 49, 66, 52, 54, 25, 45, 27, 29, 41, 23, 43, 44, 24, 22, 42, 46, 26, 28, 30,
R	1, 2, 3, 4, 5, 9, 7, 11, 10, 8, 12, 15, 31, 14, 32, 13, 33, 34, 16, 35, 37, 17, 47, 39, 19, 21, 40, 44, 24, 22, 42, 46, 26, 28, 30,



Radio ACEC 5160