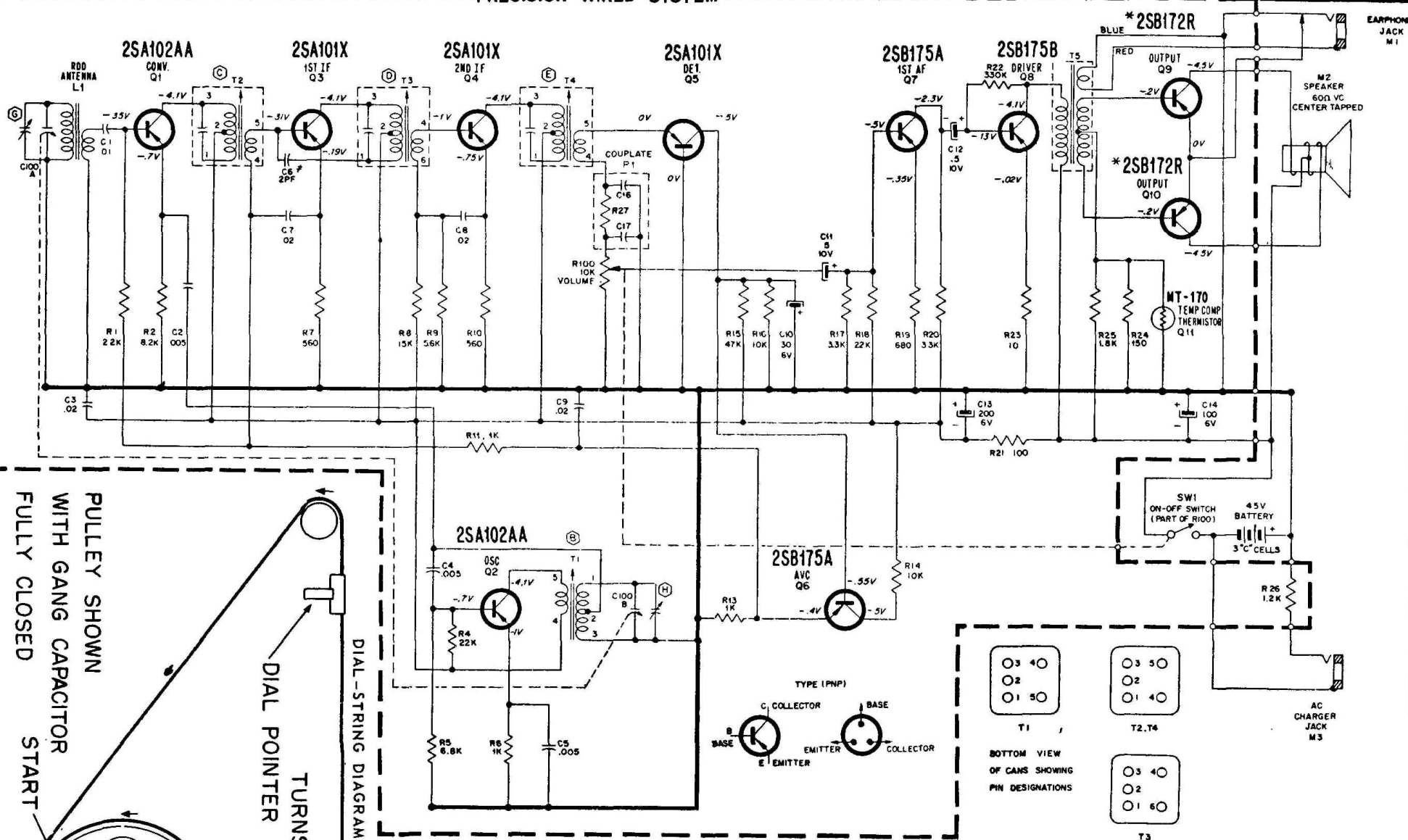


PRECISION WIRED SYSTEM



ADMIRAL Chassis 10T1, Model Y741R

INSERT BATTERIES IN SLEEVE PUSH NEGATIVE (-) END OF BATTERY AGAINST SPRING AT RIGHT PRESS POSITIVE (+) END INTO CLIP TO MAKE CONTACT AT LEFT

BATTERY REPLACEMENT

NOTES:
 * CHASSIS GROUND
 * COMMON PRECISION WIRED SYSTEM GROUND
 * UNLESS OTHERWISE SPECIFIED
 * CAPACITOR VALUES IN MICROFARADS; RESISTOR VALUES IN OHMS, 1/4 WATT, 10%
 * VOLTAGE AND CURRENT READINGS TAKEN WITH FRESH BATTERIES.
 * CURRENT DRAIN, NO SIGNAL = 19mA, IF = 455 KC
 * * = NOT MOUNTED ON CIRCUIT BOARD * = MATCHED PAIR
 * VOLTAGES TAKEN WITH VTVM BETWEEN POINTS INDICATED AND COMMON GROUND (POSITIVE)

