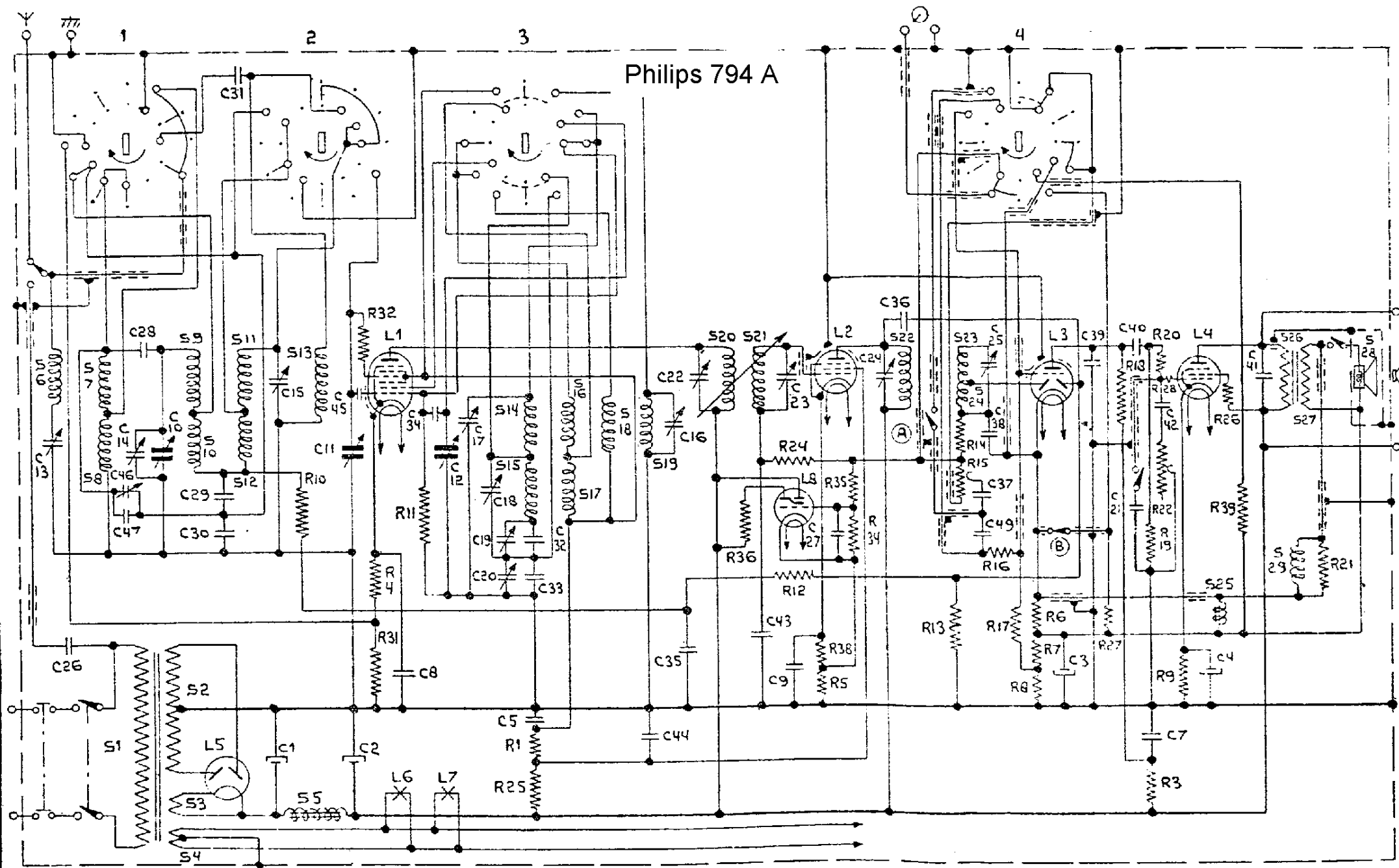


Philips 794 A



CONDENSERS.			
Designa- tion.	Value.	Code No.	
C1	32 $\mu\text{F}$	28.180.130	
C2	32 $\mu\text{F}$	28.180.130	
C3	50 $\mu\text{F}$	28.182.000	
C4	50 $\mu\text{F}$	28.182.000	
C5	0.1 $\mu\text{F}$	28.199.090	
C7	0.5 $\mu\text{F}$	28.199.160	
C8	50000 $\mu\mu\text{F}$	28.201.150	
C9	0.1 $\mu\text{F}$	28.201.180	
C10	11—490 $\mu\mu\text{F}$	28.211.421	
C11	11—490 $\mu\mu\text{F}$		
C12	11—490 $\mu\mu\text{F}$		
C13	12—170 $\mu\mu\text{F}$	see coils	
C14	2.5—30 $\mu\mu\text{F}$	see coils	
C15	2.5—30 $\mu\mu\text{F}$	see coils	
C16	2.5—30 $\mu\mu\text{F}$	28.211.830	
C17	2.5—30 $\mu\mu\text{F}$	see coils	
C18	2.5—30 $\mu\mu\text{F}$	see coils	
C19	12—170 $\mu\mu\text{F}$	28.211.310	
C20	12—170 $\mu\mu\text{F}$	28.211.310	
C21	0.1 $\mu\text{F}$	28.201.180	
C22	12—170 $\mu\mu\text{F}$	28.211.310	
C23	12—170 $\mu\mu\text{F}$	see coils	
C24	12—170 $\mu\mu\text{F}$	28.211.310	
C25	12—170 $\mu\mu\text{F}$	see coils	
C26	500 $\mu\mu\text{F}$	28.192.500	
C27	50000 $\mu\mu\text{F}$	28.199.060	
C28	10 $\mu\mu\text{F}$	28.206.340	
C29	16000 $\mu\mu\text{F}$	28.201.100	
C30	25000 $\mu\mu\text{F}$	28.201.120	
C31	16 $\mu\mu\text{F}$	28.206.360	
C32	650 $\mu\mu\text{F}$	28.192.250	
C33	1375 $\mu\mu\text{F}$	28.192.300	
C34	100 $\mu\mu\text{F}$	28.206.270	
C35	0.1 $\mu\text{F}$	28.201.180	
C36	10 $\mu\mu\text{F}$	28.206.340	
C37	2000 $\mu\mu\text{F}$	28.198.920	
C38	100 $\mu\mu\text{F}$	28.206.270	
C39	400 $\mu\mu\text{F}$	28.190.190	
C40	20000 $\mu\mu\text{F}$	28.199.020	
C41	4000 $\mu\mu\text{F}$	28.199.710	
C42	8000 $\mu\mu\text{F}$	28.198.980	
C43	0.1 $\mu\text{F}$	28.201.180	
C44	0.1 $\mu\text{F}$	28.199.090	
C45	2 $\mu\mu\text{F}$	28.205.880	
C46	2.5—30 $\mu\mu\text{F}$	28.211.830	
C47	20 $\mu\mu\text{F}$	28.206.370	
C49	250 $\mu\mu\text{F}$	28.190.170	
RESISTANCES.			
Designa- tion.		Value.	Code No.
R1	2 $\times$ 1 Watt	40000/2 Ohm	28.771.060
R3	0.5 Watt	50000 Ohm	28.770.420
R4	0.25 Watt	250 Ohm	28.773.640
R5	0.25 Watt	800 Ohm	28.773.690
R6	0.25 Watt	32 Ohm	28.773.550
R7	0.25 Watt	3200 Ohm	28.773.750
R8	0.25 Watt	4000 Ohm	28.773.760
R9	0.5 Watt	160 Ohm	28.774.890
R10	0.25 Watt	0.1 M. Ohm	28.773.900
R11	0.25 Watt	50.000 Ohm	28.773.870
R12	0.5 Watt	1 M. Ohm	28.770.550
R13	0.25 Watt	0.5 M. Ohm	28.773.970
R14	0.25 Watt	0.1 M. Ohm	28.773.900

# Philips 794 A

## RESISTANCES.

Designation.		Value.	Code No.	Designation.		Value.	Code No.
R15		0.5 M. Ohm	28.811.261	R26	0.25 Watt	64 Ohm	28.773.580
R16	0.5 Watt	1.6 M. Ohm	28.770.570	R27	0.25 Watt	32 Ohm	28.773.550
R17	0.5 Watt	1.6 M. Ohm	28.770.570	R28	0.5 Watt	1000 Ohm	28.770.250
R18	0.5 Watt	0.1 M. Ohm	28.770.450	R31	0.25 Watt	2500 Ohm	28.773.740
R19	0.25 Watt	0.8 M. Ohm	28.773.990	R32	0.25 Watt	50 Ohm	28.773.570
R20	0.25 Watt	0.1 M. Ohm	28.773.900	R34	0.5 Watt	1.6 M. Ohm	28.770.570
R21	0.25 Watt	500 Ohm	28.773.670	R35	1 Watt	5 M. Ohm	28.771.270
R22			28.811.270	R36	1 Watt	2 M. Ohm	28.771.230
R24	0.5 Watt	1.6 M. Ohm	28.770.570	R38	0.25 Watt	320 Ohm	28.773.650
R25	1 Watt	32000/2 Ohm	28.771.050	R39	0.25 Watt	10 Ohm	28.773.500

# Philips 794 A

## VALVES AND PILOT LAMPS.

L1	L2	L3	L4	L5	L6-7	L8
FC4	VP4B	TDD4	Pen A4	1821	8042.07	TV4