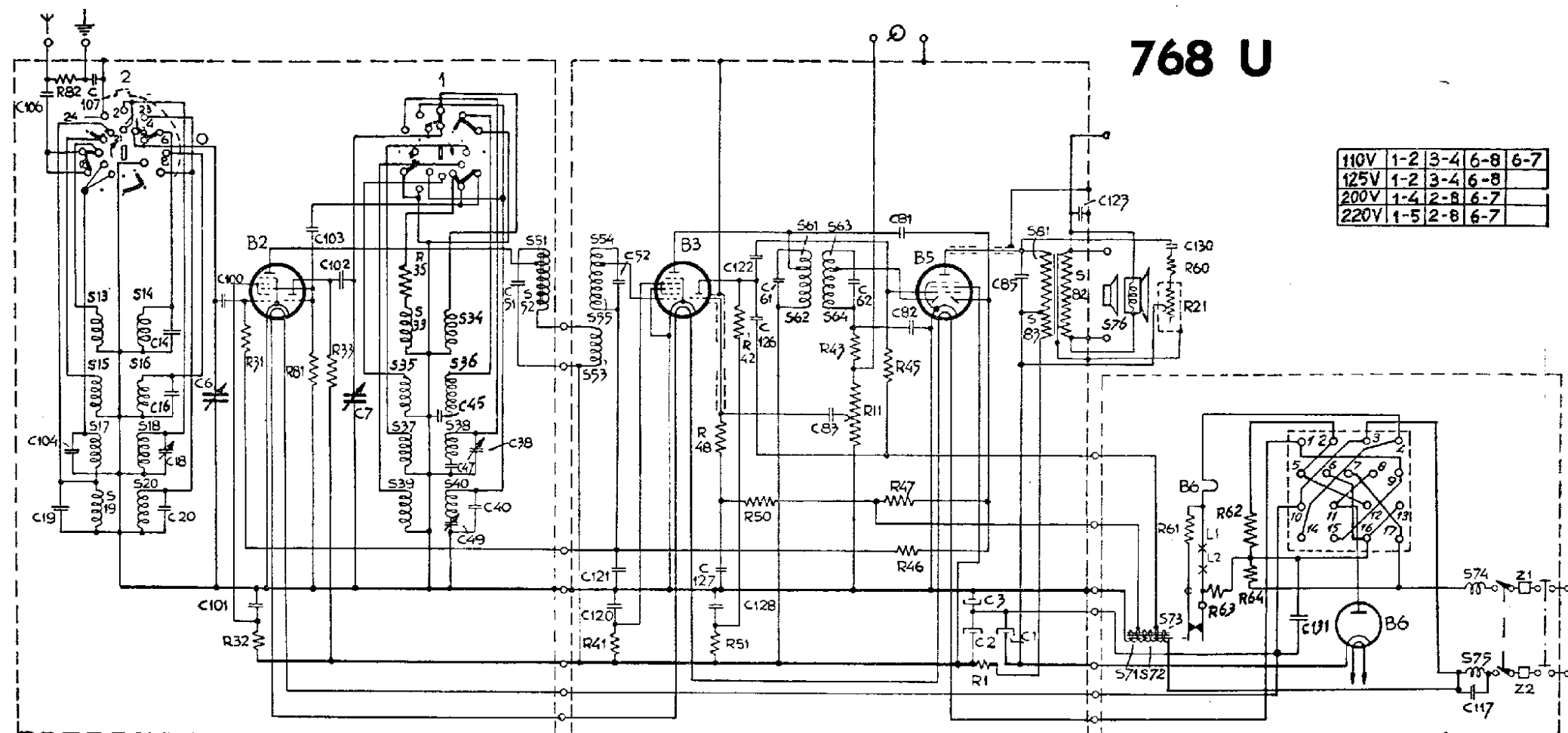


S: 13,15,17,19,14,16,18,20	33,35,37,39,34,36,38,40.	51,52,53,54,55,	61,62,63,64,	81,83,82, 76,71,72,73,	74, 75,
C: 106,15,104,107, 14,16,18,20, 6,100,101,103,102,7,	45,47,49,38,40,51,	120,121,52	127,128,122,126,61, 83,62.	81,82, 3,2,1, 85	123 130, 131, 117,
R: 82	51, 32, 81,33, 35	41	48,51, 42,50, 43,11, 45,47,46,	1,	60,21, 61,63,62,64,



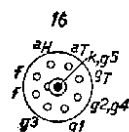
768 U

110V	1-2	3-4	6-8	6-7
125V	1-2	3-4	6-8	
200V	1-4	2-8	6-7	
220V	1-5	2-8	6-7	

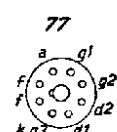
UCH 21

UBL 21

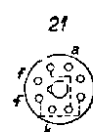
UYIN



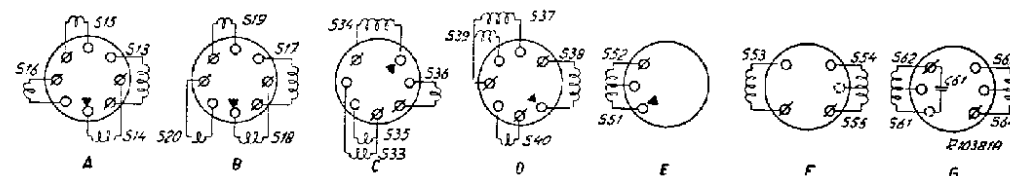
B2, 3



B5



B6



R11044

PHILIPS SERVICE

768 U

13,7—51 m
48—175 m
175—585 m
708—2000 m

9636-05 Z = 5 Ω

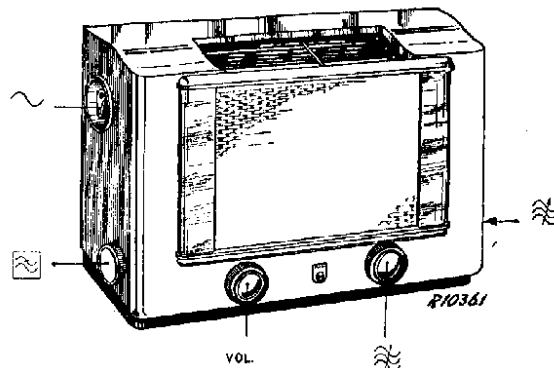
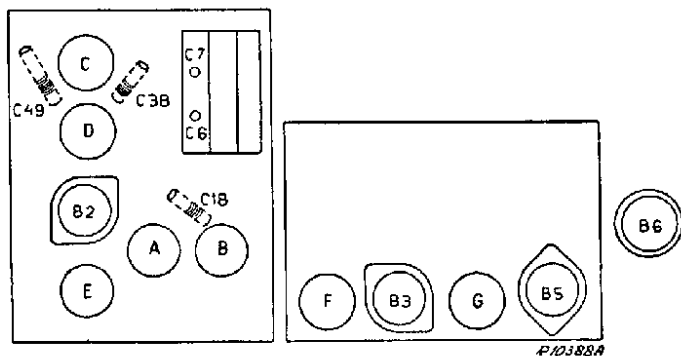
110 V, 125 V, 200 V, 220 V.

468 kc/s
U-19 452 kc/s

42 W

175—585 m III	708—2000 m III	175—585 m V
VOL. max.	25 pF—αB2	1154 kc/s—Y
max.	C7	C6, C7 max.
C6, C7 + 15°	160 kc/s — Y	260 m
1650 kc/s—Y	C6, C7 160 kc/s	
C18	C7	
25 pF—αB2	VOL. max.	
C7	max.	
600 kc/s — Y	C49 max.	
C6, C7 500 m		
C7		
C38 max.		

15° 09 992 44.0



R1	1200 Ω	49 362 74.0	C1	50 pF	49 031 01.0
R11	0,5 MΩ	49 470 30.0	C2	50 pF	28 185 68.1
R21	50000 Ω	49 470 49.0	C3	100 pF	28 212 52.0
R31	0,47 MΩ	48 425 10/470K	C6	11-490 pF	48 406 99/3E9
R32	15000 Ω	48 426 10/15K	C7	11-490 pF	28 205 88.0
R33	15000 Ω	48 426 10/15K	C14	3,9 pF	28 212 06.2
R35	39 Ω	48 425 10/39E	C16	2 pF	48 406 10/22E
R41	22000 Ω	48 425 10/22K	C18	32 pF	48 406 10/18E
R42	0,1 MΩ	48 425 10/100K	C19	22 pF	28 212 06.2
R43	47000 Ω	48 425 10/47K	C20	18 pF	48 406 99/39E
R45	0,68 MΩ	48 425 10/680K	C38	32 pF	48 406 02/637E
R46	1,5 MΩ	48 426 10/1M5	C40	39 pF	48 406 02/663E
R47	0,82 MΩ	48 425 10/820K	C45	637 pF	48 406 01/430E
R48	0,82 MΩ	48 425 10/820K	C49	200 pF	28 212 08.2
R50	1,5 MΩ	48 426 10/1M5	C51	103 pF	—
R51	56000 Ω	48 425 10/56K	C52	103 pF	—
R61	330 Ω	48 467 10/330E	C61	103 pF	—
R60	100 Ω	48 425 10/100E	C62	103 pF	—
R62	180 Ω	—	C81	3,3 pF	48 406 99/3E3
R63	125 Ω	49 362 47.3	C82	82 pF	48 406 10/82E
R64	39 Ω	—	C83	22000 pF	48 750 20/22K
R81	47000 Ω	48 425 10/47K	C85	4700 pF	48 752 20/4K7
R82	0,1 MΩ	48 425 10/100K	C100	100 pF	48 406 10/100E
			C101	47000 pF	48 751 20/47K
			C102	470 pF	48 406 20/470E
			C103	150 pF	48 406 10/150E
			C104	47 pF	48 406 10/47E
			C106	1000 pF	48 752 20/1K
			C107	4700 pF	48 752 20/4K7
			C117	220 pF	48 406 10/220E
			C120	4700 pF	48 751 20/4K7
			C121	47000 pF	48 750 20/47K
			C122	10000 pF	48 751 20/10K
			C123	4700 pF	48 752 20/4K7
			C126	2200 pF	48 751 20/2K2
			C127	47000 pF	48 750 20/47K
			C130	0,1 pF	48 752 20/100K
			C131	22000 pF	48 756 20/22K
			C132	4700 pF	48 752 20/4K7

220 V~

	B2	B3	B5	B6	
	UCH 21	UCH 21	UBL 21	UY1 N	
Va	aT 107 aH 158	aT 56 aH 156	165		V
Vg2(4)	103	100	145		V
Ia	aT 2,95 aH 2,2	aT 0,96 aH 4,1	48		mA
Ig2(4)	3,8	2,51	7,7		mA

S13, S14, S15, S16 S17, S18, S19, S20 S33, S34, S35, S36 S37, S38, S39, S40 S51, S52, C51 S53, S54, S55, C52	A1 037 14.0 A1 037 16.1 A1 037 32.0 A1 037 17.2 A1 037 33.1 A1 037 34.1	S61, S62, S63, S64, C61, C62 S71, S72, S73 S74, S75 S76 S81, S82, S83 S84, S85	A1 037 61.1 A1 151 17.0 A1 000 34.0 28 220 51.1 A1 081 99.1 A1 103 12.0
---	--	--	--