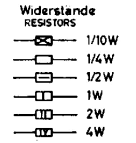


ZF/IF: AM 460kHz FM 6,75MHz
Gleichspannungsmessung mit Voltmeter Ri 20kΩ/V
D.C. VOLTAGE TEST WITH VOLTMETER Ri 20kΩ/V.

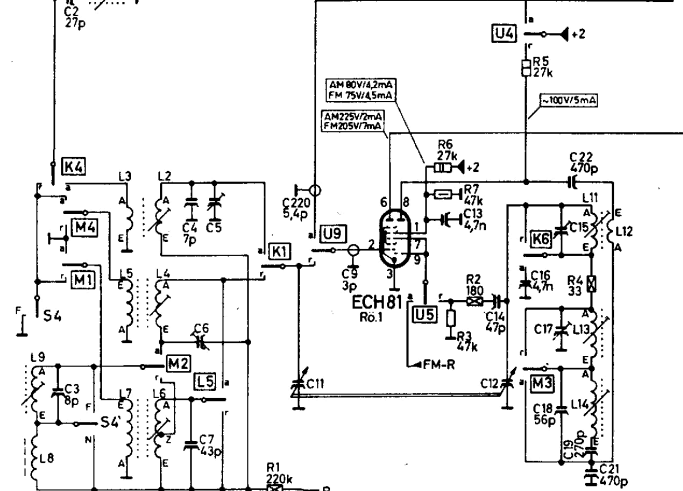


Röhren-Fassungen Meß-Buchse
(von unten) TUBE SOCKET (from below)
(von oben) TEST SOCKET (from above)

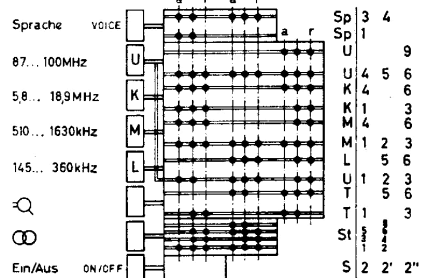
Kondensatoren
CAPACITORS

- 1p = 1000pF
- 1n = 1000nF
- 1µ = 1000µF

Filter-Anschlüsse
(von unten) IF-TRANSF. CONNECTIONS (from below)



Drucktastenaggregat
KEY ASSEMBLY

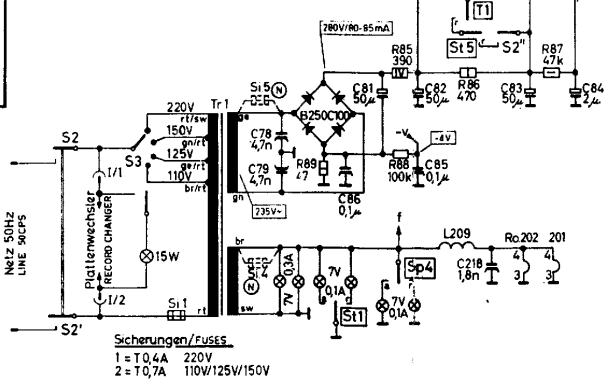
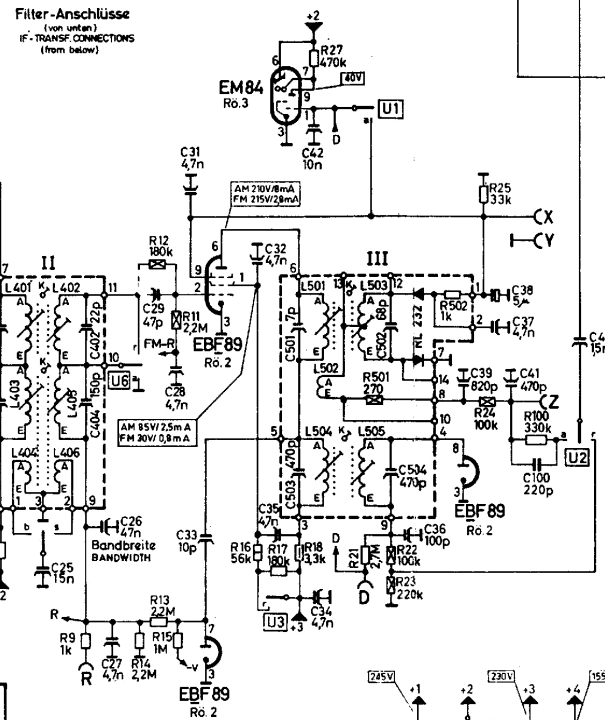


a = Arbeitskontakt/OPERATING CONTACT
r = Ruhekontakt/RESTING CONTACT

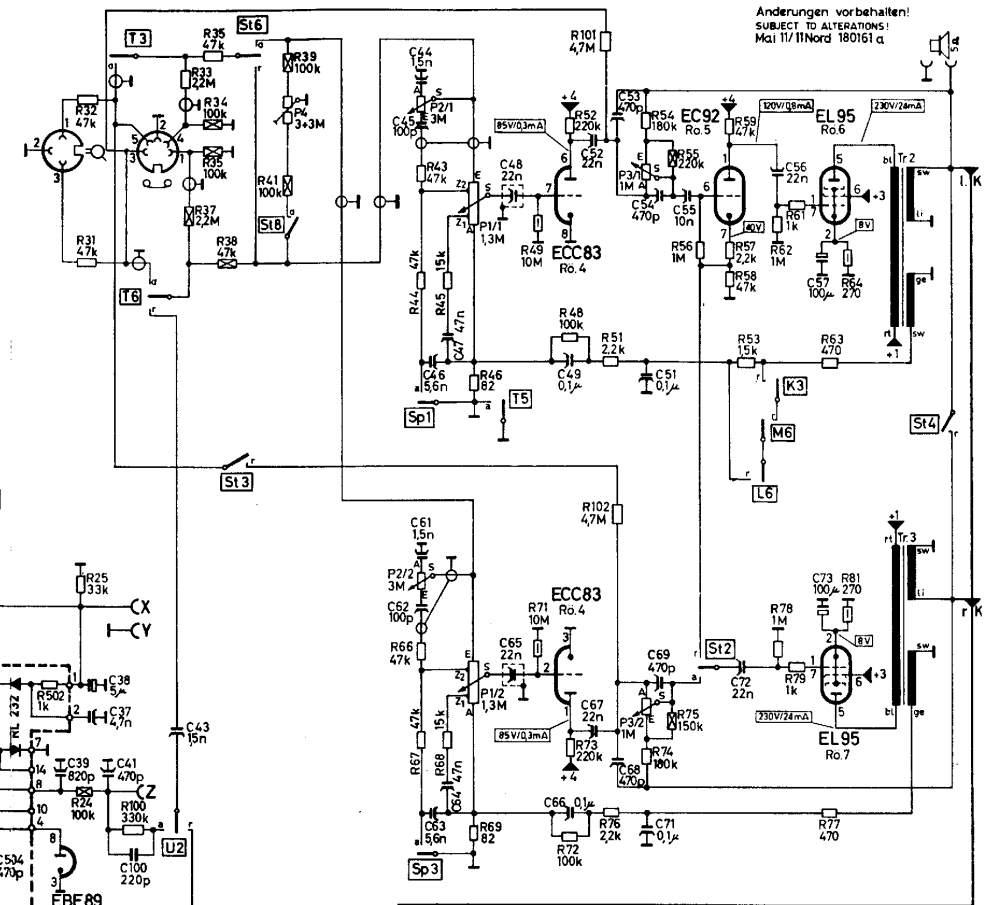
(N = Mainau 11 Nord)

Si.1 T04A → T630mA(220V)
Si.2 T07A → T800mA(125...150V)
R85 390/4W → 390/5W
R86 470/1W → 470/3.5W

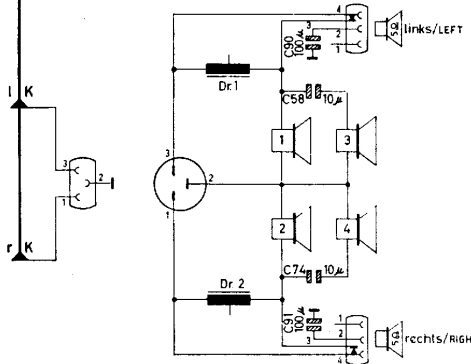
Zusätzlich/ADDITIONAL:
Si.3 1A(110V)
Si.4 6A
Si.5 250mA



Sicherungen/FUSES
1 = T04A 220V
2 = T07A 110V/125V/150V



Änderungen vorbehalten!
SUBJECT TO ALTERATIONS!
Mai 11/Nord 180161a



SABA
Musiktruhe
Mainau 11
Mainau 11 Nord
- Stereo -