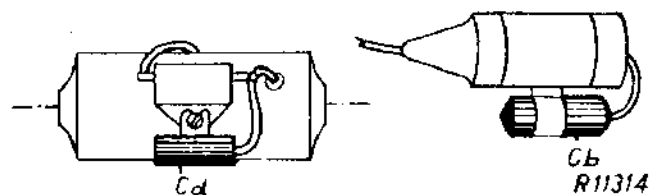
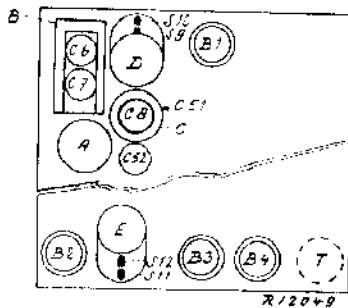


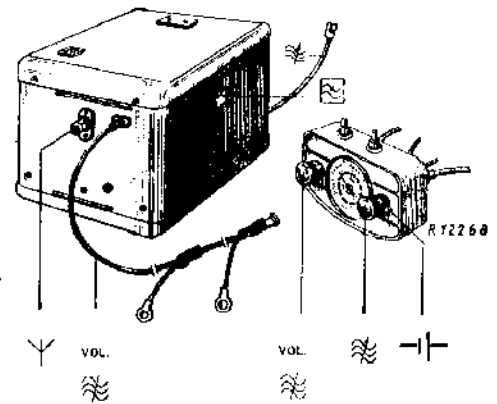
200—585 m	9662 Z 5 Ω
850—1950 m	6V—4,5 A (258V)
468 kc/s	12V—2,25 A (259V)

850—1950 m	200—585 m	850—1950 m
VOL. max	VOL. max	VOL. max
468kc/s-32000pF-g1B2	C4, C5 15°	C4, C5 30°
S11, S12, S17 max	1480 kc/s-32 pF—Y	322kc/s-32 pF—Y
468 kc/s-32000 pF-g4B1	C7, C6 max	C8 max
S9, S10 max	32 pF—aB1	32pF-aB1
	C5	C5
	625kc/s-32 pF—Y	170kc/s-32pF—Y
	C4, C5 625 kc/s	C4, C5 170 kc/s
	C5	C5
	C52 max	C51 max



	B1	B2	B3	B4	
	EK2	EF9	EBC3	EL2	
Va	220	225	80	220	V
Vg2	225	95	—	230	V
Vg3(5)	45	—	—	—	V
Vk	1,6	2,1	2,5	15	V
Ia	1,75	6,0	0,45	25	mA
Ig2	2,0	1,8	—	4,5	mA
Ig3(5)	1,0	1,8	—	—	mA

1) 258 V 2) 259 V



R1	0,1 MΩ	48 552 10/100K	C1	12,5 μF	48 317 11/12,5
R2	47 Ω	48 425 10/47E	C2	12,5 μF	+ 12,5
R3	390 Ω	48 426 10/390E	C3	25 μF	49 020 41.0
R4	47000 Ω	48 426 10/47K	C4	0,490 pF	28 212 39.0
R5	2200 Ω	48 426 10/2K2	C5	0,490 pF	28 211 83.1
R6	330 Ω	48 426 10/330E	C6	2 1/2-30 pF	28 211 83.1
R7	82000 Ω	48 426 10/82K	C7	2 1/2-30 pF	28 211 83.1
R8	47000 Ω	48 426 10/47K	C8	30 pF	—
R9	0,1 MΩ	48 427 10/100K	C9	47000 pF	48 751 10/47K
R10	100 Ω	48 427 10/100E	C10	47000 pF	48 751 10/47K
R11	220 Ω	48 427 10/220E	C14	120 pF	48 429 05/120E
R12	100 Ω	48 427 10/100E	C15	375 pF	48 429 05/375E
R13	220 Ω	48 427 10/220E	C16	97 pF	—
R14	0,5 MΩ	49 473 04.0	C17	91 pF	—
R15	1,5 MΩ	48 426 10/1M5	C18	0,1 μF	48 751 10/100K
R16	6800 Ω	48 426 10/6K8	C19	0,1 μF	48 751 10/100K
R17	0,68 MΩ	48 425 10/680K	C20	0,33 μF	48 751 10/330K
R18	0,27 MΩ	48 426 10/270K	C21	0,1 μF	48 751 10/100K
R19	1,2 MΩ	48 426 10/1M2	C22	97 pF	—
R20	0,33 MΩ	48 552 10/330K	C23	103 pF	—
	0,47 MΩ	48 426 10/470K	C24	15 pF	48 601 10/15E
	1000 Ω	48 426 10/1K	C25	100 pF	48 406 10/100E
	1200 Ω	48 426 10/1K2	C26	47000 pF	48 751 10/47K
			C27	0,1 μF	48 751 10/100K
			C28	0,39 μF	48 751 10/390K
			C29	2 x 0,47 μF	48 751 10/470K
			C30	22000 pF	48 758 20/22K
			C31	22000 pF	48 758 20/22K
			C32	47000 pF	48 754 20/47K
			C33	330 pF	48 406 10/330E
			C34	47000 pF	48 751 10/47K
			C35	10000 pF	28 199 94.0*
			C36	0,22 μF	48 751 10/220K
			C37	10000 pF	28 199 94.0*
			C38	0,5 μF	—
			C39	15 pF	48 601 10/15E
			C40	5000 pF	—
			C41	47000 pF	48 751 10/47K
			C51	30 pF	—
			C52	2 1/2-30 pF	28 212 45.3
			C53	22 pF	48 406 10/22E
			C54	47000 pF	48 751 10/47K

S1, S14, S2	A1 035 12.1	S16	T
S3, S4, S28, S29	A1 035 11.0	S17, S18,	A3 161 02.0*
S5, S6, S7, S8	A1 035 13.2	S19, S20	A3 161 17.0*
C8, C51	28 573 73.1	S17, S18,	28 534 62.1
S9, S10	28 573 74.1	S19, S20	28 220 52.0
C16, C17	A1 000 27.1	S20, S22,	28 891 16.0*
S11, S12, S27	28 588 50.1	S23, S24	
C22, C23		S25	
S13		S26	
S15		C38	
T	7866 *)	Cb	2 μF
T	7867 *)	Cd	0,5 μF
Z	08 140 34.0*)		28 160 92.1
Z	08 140 31.1*)		7350

S 4,1,2,3,4,	13,	26,	5,6,7,8,	9,10,16,	15,	11,12,	7, 17,18,19,20,	21, 22,	23, 24,		
C 9,40,53,	4, 6,	10,38,41,54,	39, 5,	7,52,8,51,14,15,	16, 18,	17,19,20,	21, 22,	2,	9,23,24,25,26,28,30,31,32,33,1,34,2,3,36,	35,37	
R	1,	2, 3,	4,	5,	6,7,8,9,	10,11,12,13,14,	15,	16,17,	18,	19,	20

258 V
259 V

