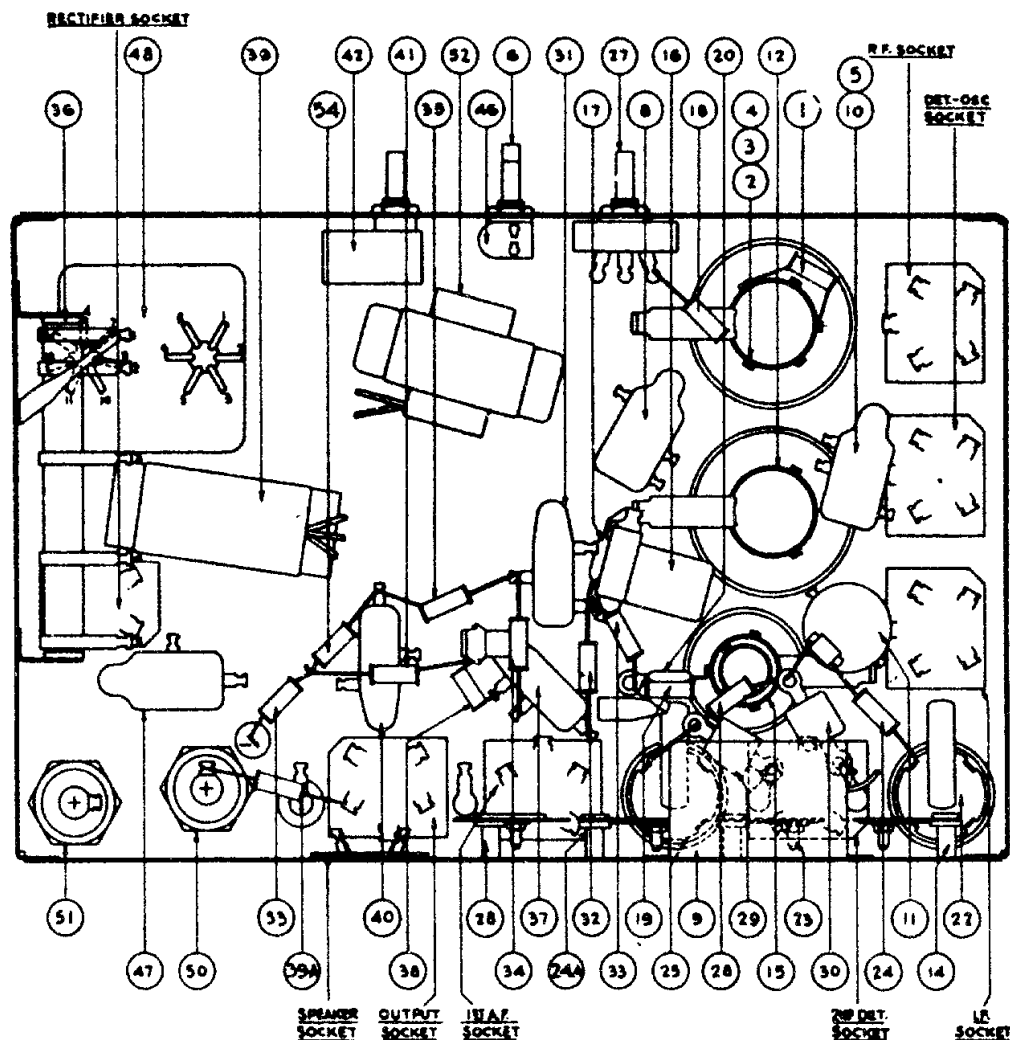


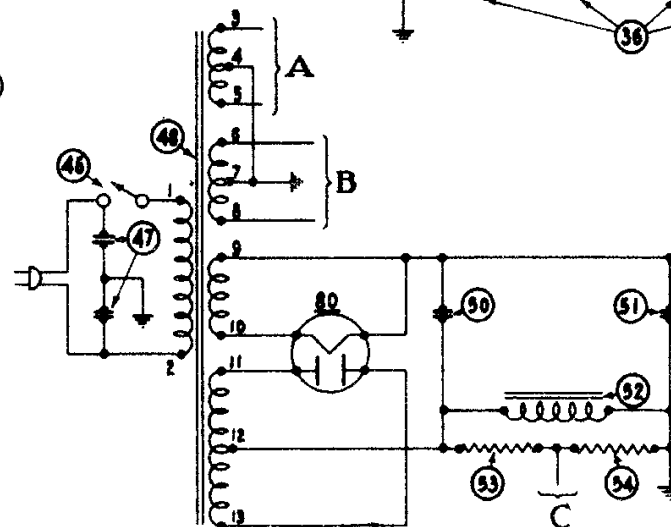
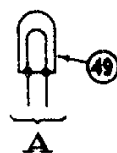
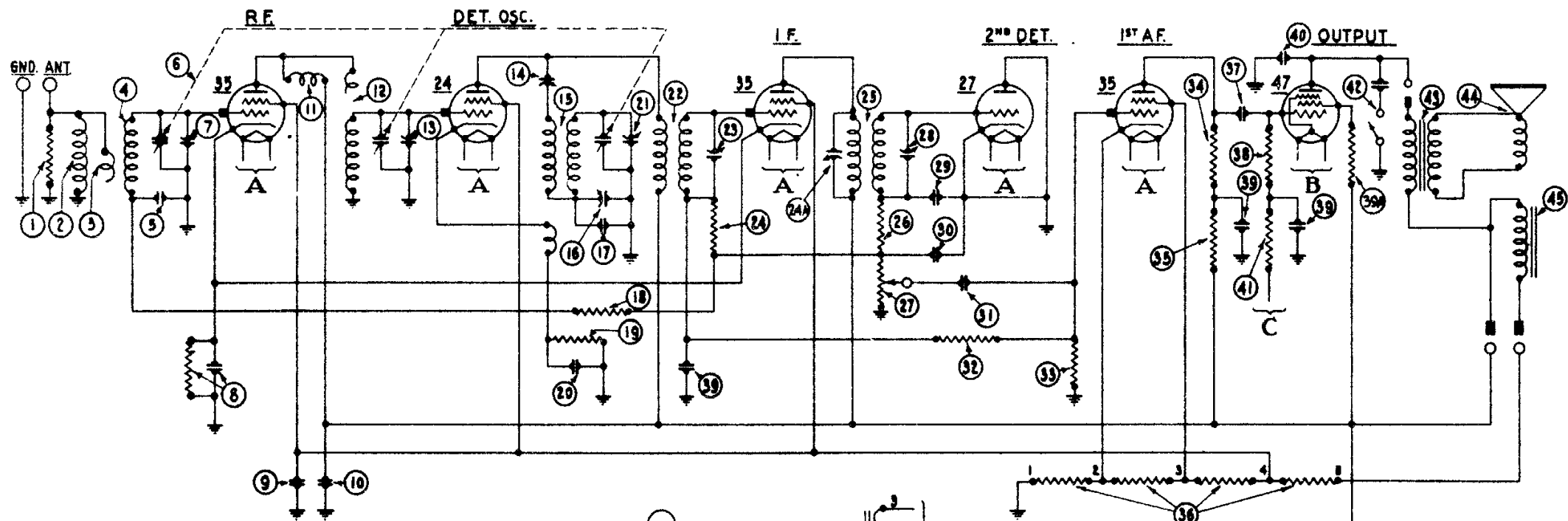
Philco Radio



REPLACEMENT PARTS MODELS 70 AND 70-A

(Above Serial No. B-22,000)

No. on Figs. 3 and 4	Description	Part No.	No. on Figs. 3 and 4	Description	Part No.
①	Resistor (10,000 ohms)	4112	④⑤	B. C. Resistor	04196
②	Antenna Coil	04339	⑥	Condenser (.01 mfd.)	3903-T
③	Condenser (.05 mfd.) double	3615-AF	⑦	Resistor (490,000 ohms)	4517
④	Tuning Condenser Assembly 50-60 cycles	04164	⑧	Filter Condenser Block (.05, .25, 1.5 mfd.)	04194
⑤	Tuning Condenser Assembly 25-40 cycles	04165	⑨A	Resistor (3,000 ohms)	5309
⑥	Compensating Condenser — Antenna — (Part of Tuning Condenser Assembly)		⑩	Condenser (.01 mfd.)	3903-U
⑦	Condenser (.09 mfd. and 200 ohm Resistor)	4969-L	⑪	Resistor (330,000 ohms) 50-60 cycles	6046
⑧	Condenser (.5 mfd.)	3583	⑫	Resistor (490,000 ohms) 25-40 cycles	4517
⑨	Combined with ⑧		⑬	Tone Control	03637
⑩	R. F. Choke	04196	⑭	Output Transformer	2673
⑪	Interstage Coil	04185	⑮	Voice Coil & Cone Assembly	02996
⑫	Compensating Condenser — Detector — (Part of Tuning Condenser Assembly)		⑯	Field Coil Assembled with Pot	02966
⑬	Compensating Condenser—Coupling	04000-M	⑰	On-Off Switch	4095
⑭	Oscillator Coil	04186	⑱	Condenser (.015 mfd. Double)	3793-H
⑮	Compensating Condenser — Low Fre- quency	04000-F	⑲	Power Transformer (50-60 cycles)	5117
⑯	Condenser (410 mmf.)	5120	⑳	Power Transformer (25-40 cycles)	5118
⑰	Resistor (2,000,000 ohms)	5872	㉑	Power Transformer (50-60 cycles, 230 volts)	5119
⑱	Resistor (10,000 ohms)	4412	㉒	Pilot Light	3463
⑲	Condenser (700 mmf.)	4520	㉓	Electrolytic Condenser (6 mfd.) 50-60 cycles	4916
㉑	Compensating Condenser — High Fre- quency—(part of Tuning Condenser Assembly)		㉔	Electrolytic Condenser (14 mfd.) 25-40 cycles	5725
㉒	First I. F. Transformer	04180	㉕	Electrolytic Condenser (6 mfd.) 50-60 cycles	4916
㉓	Compensating Condenser—First I. F.	04000-M	㉖	Electrolytic Condenser (10 mfd.) 25-40 cycles	5142
㉔	Resistor (2,000,000 ohms)	5872	㉗	Filter Choke	4819
㉕A	Compensating Condenser 2nd I. F. Primary	04000-M	㉘	Resistor (51,000 ohms)	4518
㉖	Second I. F. Transformer	03033	㉙	Resistor (490,000 ohms)	4517
㉗	Resistor (99,000 ohms)	4411	㉚	Tube Shield	04166
㉘	Volume Control	6015	㉛	Knob (Large)	02064
㉙	Compensating Condenser—Second I. F.	04000-M	㉜	Knob (Small)	03437
㉚	Condenser (110 mmf.)	4519	㉝	Knob Spring	4147
㉛	Condenser (110 mmf.)	4519	㉞	Grid Clip	4897
㉜	Condenser (.01 mfd.)	3903-G	㉟	Five Prong Socket Assembly	4956
㉝	Resistor (4,000,000 ohms)	6010	㊱	Four Prong Socket Assembly	4955
㉞	Resistor (1,000,000 ohms)	4409	㊲	Dial Complete	03031
㉟	Resistor (70,000 ohms)	5385	㊳	Basel	5312
㊱	Resistor (25,000 ohms)	4516	㊴	Chassis Mounting Screw	W-468
			㊵	Mounting Washer	W-315
			㊶	Rubber Washer	5189



- ① Volume Control
- ② R. F. Transformer
- ③ Tuning Condenser (50-60 cycles)
- ④ Tuning Condenser (25-40 cycles)
- ⑤ Compensating Condenser — Antenna—(Part of Gang Condenser Assembly)
- ⑥ Condenser (.09 mfd. Double)
- ⑦ Detector Transformer
- ⑧ Compensating Condenser — Detector—(Part of Gang Condenser Assembly)
- ⑨ Oscillator Coil
- ⑩ Condenser (410 mmf.)
- ⑪ Compensating Condenser—Low Frequency
- ⑫ Resistor (51,000 ohms)
- ⑬ Condenser (.09 mfd. Double)
- ⑭ Compensating Condenser—High Frequency — (Part of Gang Condenser Assembly)
- ⑮ Resistor (5,000 ohms)
- ⑯ Condenser (110 mmf.)

- ⑰ Resistor (13,000 ohms)
- ⑱ Compensating Condenser—1st I. F. Primary
- ⑲ First I. F. Transformer
- ⑳ Compensating Condenser—1st I. F. Secondary
- ㉑ Second I. F. Transformer
- ㉒ Condenser (.05 mfd.)
- ㉓ Compensating Condenser—2nd I. F. Secondary
- ㉔ Condenser (.5 mfd.)
- ㉕ Resistor (51,000 ohms)
- ㉖ Condenser (500 mmf.)
- ㉗ Condenser (250 mmf.)
- ㉘ R. F. Choke
- ㉙ Condenser (.09 Combined with 250 ohm Resistor)
- ㉚ Resistor (240,000 ohms)
- ㉛ Resistor (45,000 ohms) 50-60 cycles
- ㉜ Resistor (99,000 ohms) 25-40 cycles

- ㉝ Condenser (.01 mfd.)
- ㉞ Resistor (240,000 ohms)
- ㉟ Condenser (.25 mfd.)
- ㊱ Output Transformer
- ㊲ Voice Coil and Cone Assembly
- ㊳ Field Coil (Assembled with Pot)
- ㊴ B. C. Resistor
- ㊵ Electrolytic Condenser (6 mfd.) 50-60 cycles
- ㊶ Choke
- ㊷ Condenser (.09 mfd.) 50-60 cycles
- ㊸ Electrolytic Condenser (6 mfd.) 50-60 cycles
- ㊹ Pilot Light
- ㊺ Power Transformer (50-60 cycles)
- ㊻ "On-Off" Switch
- ㊼ Condenser (.015 mfd. Double)

MODELS 70 AND 70-A (A. V. C.)

I.F. 260 KC.
Philco Radio