

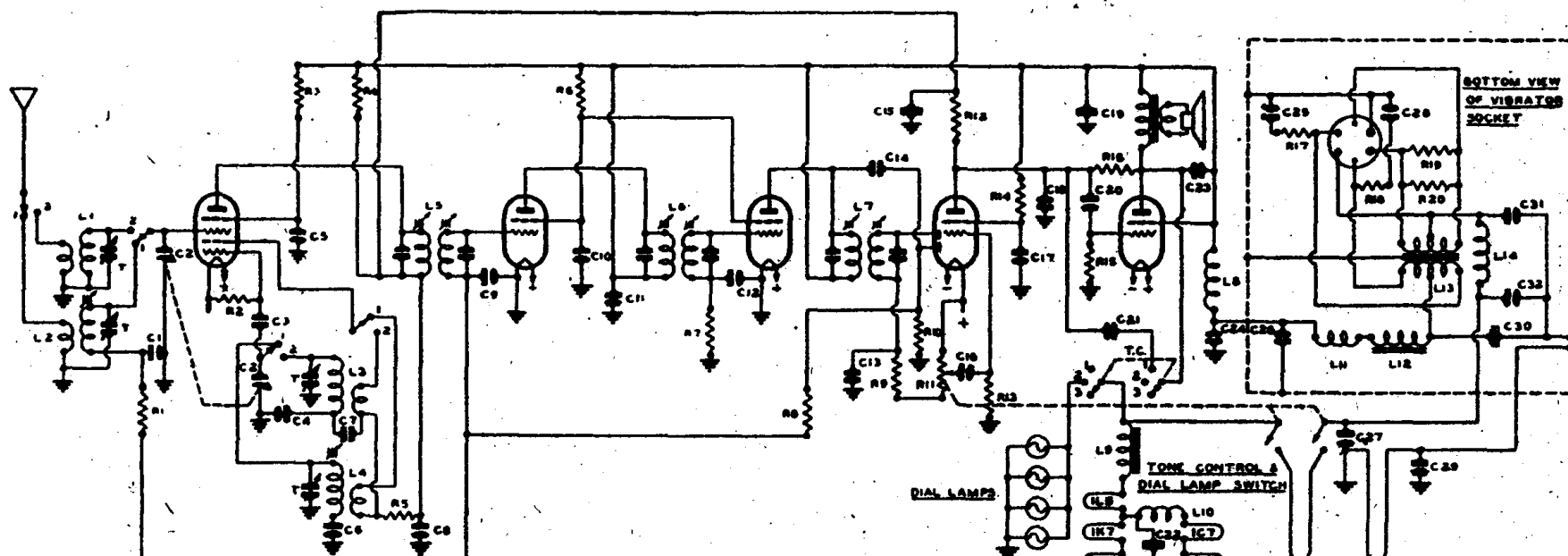
IC 7G

IM5G

IM5G

IK7G

IL5G



PHILCO 52VA3 CONSOLE

SWITCH POSITIONS

1. BROADCAST.
2. SHORT WAVE

NOTE: - RECEIVERS WITH SERIAL NOS BELOW WISH INCORPORATED THE ON-OFF SWITCH IN THE TONE CONTROL - DIAL LAMP SWITCH.

FILAMENT

6 VOLTS

TUBE VOLTAGE AND CURRENT READINGS.

TUBE	FUNCTION	PLATE		SCREEN		OSC. PLATE		BIAS
		VOLTAGE	CURRENT	VOLTAGE	CURRENT	VOLTAGE	CURRENT	
IC 7G	CONVERTER	110	1.3 MA.	55	1.8 MA.	100	3.0 MA.	- 2
IM5G	1ST. I.F. AMP.	135	0.7 MA.	40	0.2 MA.			0
IM5G	2ND. I.F. AMP.	135	0.7 MA.	40	0.2 MA.			0
IK 7G	DET. A.V.C. 1ST. A.F.	55	0.2 MA.	45	0.1 MA.			- 2
IL5G	POWER	130	7.3 MA.	135	2.0 MA.			- 4

TOTAL B CURRENT DRAIN 16.5 MA.

TOTAL BATTERY DRAIN - WITHOUT DIAL LAMPS - 1.1 AMP.

NOTE: - ALL MEASUREMENTS TO BE TAKEN WITH NO SIGNAL TUNED IN. ALL VOLTAGES WITH RESPECT TO CHASSIS.
BIAS MEASUREMENTS FOR ANY VALVE ARE TAKEN BETWEEN THAT VALVES NEGATIVE FILAMENT AND CHASSIS.

- R1 - 100 K.Ω WATT.
- R2 - 50 K.Ω WATT.
- R3 - 50 K.Ω WATT.
- R4 - 5 K.Ω WATT.
- R5 - 4 K.Ω WATT.
- R6 - 150 K.Ω WATT.
- R7 - 2 M.Ω WATT.
- R8 - 2 M.Ω WATT.
- R9 - 50 K.Ω WATT.
- R10 - 1 M.Ω WATT.
- R11 - 500 K.Ω POT. & SWITCH.
- R12 - 200 K.Ω WATT.
- R13 - 5 M.Ω WATT.
- R14 - 1 M.Ω WATT.
- R15 - 1 M.Ω WATT.
- R16 - 2 M.Ω WATT.
- R17 - 200 Ω WATT.
- R18 - 200 Ω WATT.
- R19 - 200 Ω WATT.
- R20 - 200 Ω WATT.

- C1 - 0.05 μF 200V. PAPER.
- C2 - COND.
- C3 - 50 μF MICA.
- C4 - 2000 μF MICA ± 5%.
- C5 - 0.05 μF 200V. PAPER.
- C6 - 300 μF MICA ± 5%.
- C7 - 0.001 μF MICA.
- C8 - 0.05 μF 200V. PAPER.
- C9 - 0.05 μF 200V. PAPER.
- C10 - 0.05 μF 200V. PAPER.
- C11 - 0.1 μF 200V. PAPER.
- C12 - 0.05 μF 200V. PAPER.
- C13 - 100 μF MICA.
- C14 - 100 μF MICA.
- C15 - 0 μF ELECT. 300 V.A.
- C16 - 0.005 μF 500V. PAPER.
- C17 - 0.05 μF 500V. PAPER.
- C18 - 200 μF MICA.
- C19 - 0 μF ELECT. 250 V.A.
- C20 - 0.01 μF 500V. PAPER.
- C21 - 100 μF MICA.
- C22 - 500 μF ELECT. 15 V.P.
- C23 - 1000 μF MICA.
- C24 - 50 μF MICA.
- C25 - 0.02 μF 400V. PAPER.
- C26 - 100 μF MICA.
- C27 - 0.01 μF 500V. PAPER.
- C28 - 0.02 μF 400V. PAPER.
- C29 - 0.02 μF 500V. PAPER.
- C30 - 0 μF ELECT. 250V.P.
- C31 - 0.25 μF 200V. PAPER.
- C32 - 0.25 μF 200V. PAPER.
- T - AIR TRIMMERS

- L1 - 3.W. AERIAL COIL CODE N° R75/1024
- L2 - 3.C. AERIAL COIL CODE N° R75/1025
- L3 - 3.W. OSC. COIL - CODE N° R75/1026
- L4 - 3.C. OSC. COIL - CODE N° R75/1027
- L5 - TRANS. I.F. - CODE N° R75/1028
- L6 - TRANS. I.F. - CODE N° R75/1029
- L7 - TRANS. I.F. - CODE N° R75/1030
- L8 - CHOKESMASH FILTER CODE N° R75/1031
- L9 - CHOKESMASH FILTER CODE N° R75/1032
- L10 - CHOKESMASH FILTER CODE N° R75/1033
- L11 - CHOKESMASH FILTER CODE N° R75/1034
- L12 - CHOKESMASH FILTER CODE N° R75/1035
- L13 - TRANS. VIBRATOR CODE N° R75/1036
- L14 - CHOKESMASH FILTER CODE N° R75/1037