

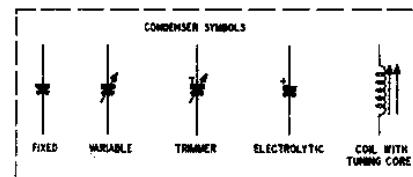
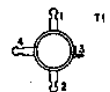
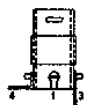
2 SECTION WAFER SWITCH SHOWN IN BROADCAST POSITION AS VIEWED FROM FRONT WITH CHASSIS INVERTED
SECTIONS OF SWITCHES NUMBERED WS1 WS2, FROM FRONT TO REAR



WS



WS



CAUTION-ONE SIDE OF AC LINE IS CONNECTED DIRECTLY TO CHASSIS

NOTES:
ALL RESISTOR VALUES IN OHMS AND ALL CONDENSER VALUES IN μ F, UNLESS OTHERWISE MARKED

⊙ LESS THAN 1 OHM
ALL VOLTAGES MEASURED WITH A 20,000-OHMS-PER-VOLT VOLTMETER BETWEEN POINTS INDICATED AND 0 MINUS, AT A LINE VOLTAGE OF 117V AC