

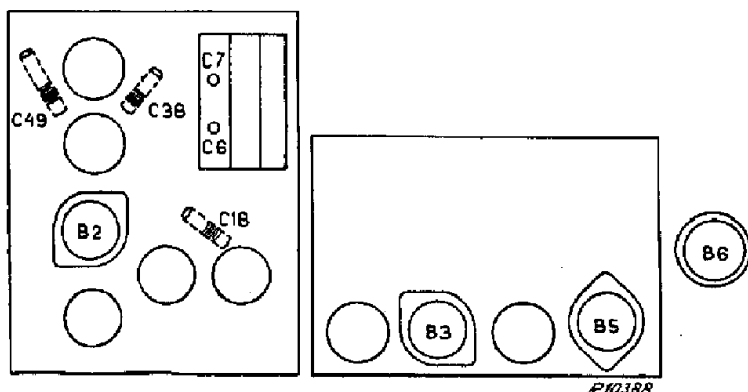
13,7—51 m
175—585 m
700—2000 m
656A — 468 ke/s
656A-19 — 452 ke/s

9678R-50, Z = 5 Ω
110 V, 125 V, 145 V
200 V, 225 V, 245 V
52 watt

Jura 656

175—585 m	B	700—2000 m	B	175—585 m	C
VOL. max. 1650 ke/s- C38 max. C 18 max. + 0999159.0	C7 -25 pF—αB2 160 ke/s 160 ke/s- C6, C7 160 ke/s C7 C49 max.	VOL. max. 452 ke/s- 5100 min.			
175—585 m	D				
1154 ke/s- C6, C7 1154 ke/s 260 m					

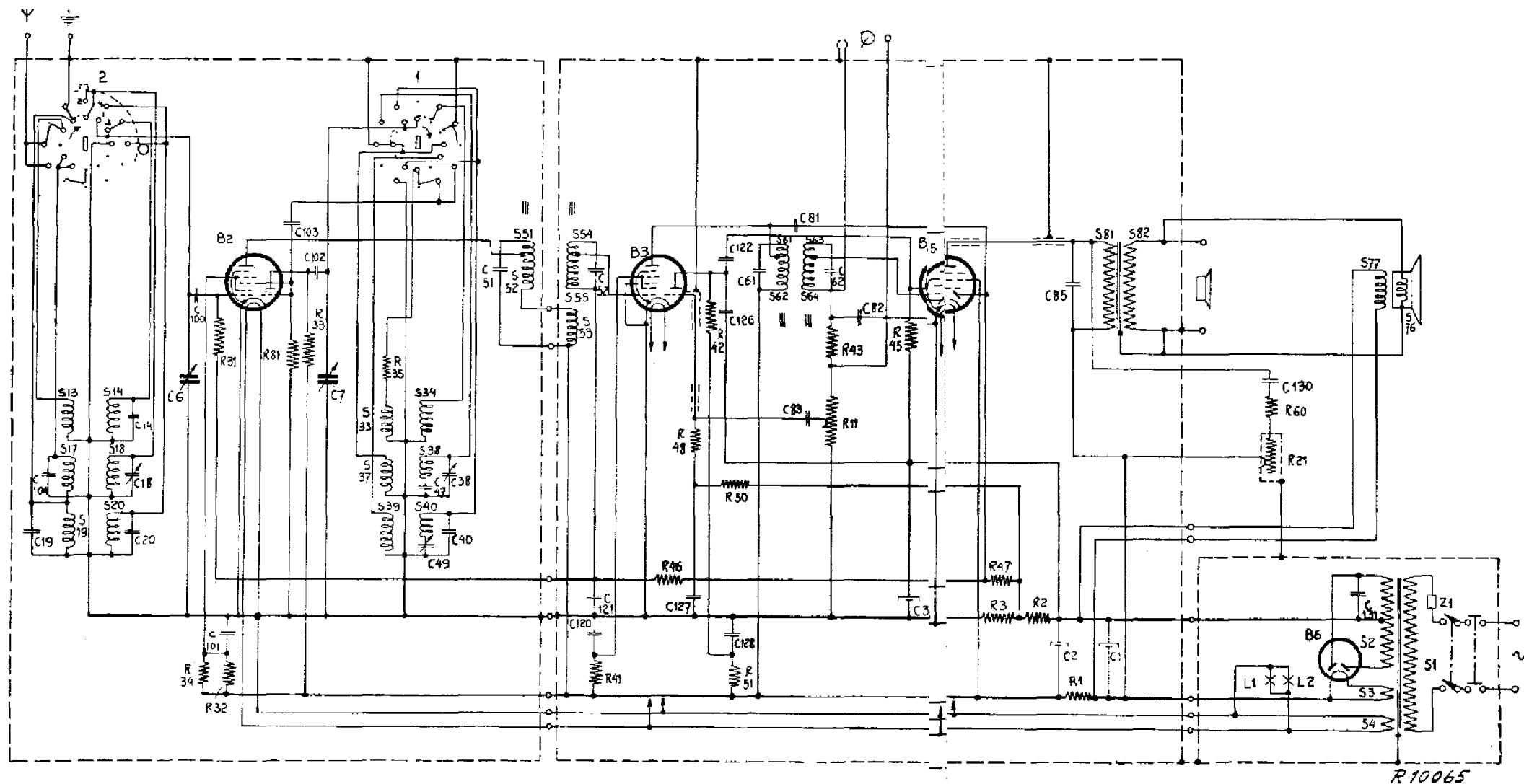
15° — 09 992 44.0



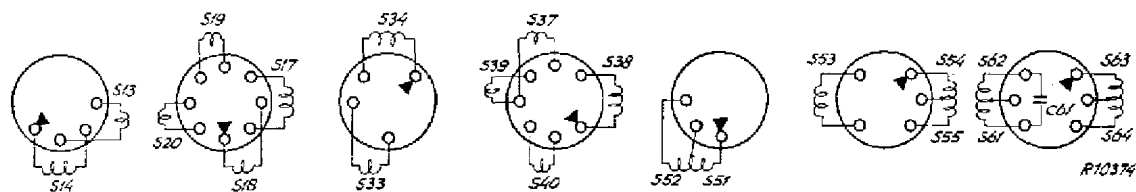
	B2	B3	B5	B6
	EGH 21	EGH 21	ERL 21	AZ 1
Va	αH 240 αT 130	αH 240 αT 60	260	
Vg2	100	95	240	
Ia	αH 3,7 αT 4,2	αH 7,5 αT 1,5	28	
Ig2	5,5	8,5	3	

C1	50 pF				
C2	30 pF				
C3	50 pF				
C6	11.490 pF	49 020 01.0	R3	39 Ω	49 375
C7	11.490 pF	28 212 52.0	R11	0.5 MΩ	49 470
C14	39 pF	49 055 11.0	R21	50000 Ω	49 470
C18	32 pF	28 212 06.0	R31	0.47 MΩ	49 375
C19	33 pF	49 055 22.0	R32	39000 Ω	49 375
C20	18 pF	49 055 19.0	R33	22000 Ω	49 375
C38	32 pF	28 212 06.0	R34	68000 Ω	49 375
C40	39 pF	49 057 16.0	R35	39 Ω	49 375
C47	450 pF	49 057 52.0	R41	47000 Ω	49 375
C47	485 pF	49 057 41.1	R42	0.1 MΩ	49 375
C49	200 pF	28 212 08.1	R43	47000 Ω	49 375
C51	103 pF		R45	0.68 MΩ	49 375 58.0
C52	103 pF		R46	1.5 MΩ	49 376 62.0
C61	103 pF		R47	0.82 MΩ	49 375 59.0
C62	103 pF		R48	0.82 MΩ	49 375 59.0
C81	22 pF	49 055 20.0	R50	1.5 MΩ	49 376 62.0
C82	82 pF	49 055 27.0	R51	22000 Ω	49 375 40.0
C83	22000 pF	49 127 59.0	R60	100 Ω	49 375 12.0
C85	4700 pF	49 129 82.0	R81	47000 Ω	49 375 44.0
C100	100 pF	49 055 23.0			
C101	47000 pF	49 128 61.0			
C102	470 pF	49 055 53.0			
C103	82 pF	49 055 27.0			
C104	47 pF	49 055 24.0			
C120	47000 pF	49 128 61.0			
C121	47000 pF	49 127 61.0			
C122	10000 pF	49 128 37.0			
C126	2200 pF	49 128 53.0			
C127	47000 pF	49 127 61.0			
C128	0.1 pF	49 128 63.0			
C150	47000 pF	49 129 85.0			
C151	22000 pF	49 129 90.0			

S1, S2, S3, S4 Z1 S13, S14 S17, S18, S19, S20 S33, S34 S37, S38, S39, S40 S51, S52, C51 S53, S54, S55, C52 S61, S62, S63 S64, C61, C62 S76 S77 S81, S82	A1 037 42.0 03 100 99.1 A1 038 27.0 A1 037 16.1 A1 038 28.0 A1 037 17.2 A1 037 33.1 A1 037 34.1 A1 037 61.0 49 981 04.0 A1 001 66.3 A1 081 84.1	S51, S52, C51 S53, S54, S55, C52 S61, S62, S63 S64, C61, C62 S100, S101, C140	A1 037 19.1 A1 037 18.1 A1 037 20.2 A1 215 23.1
---	--	---	--



Jura 656



B1-B3

B5

B6