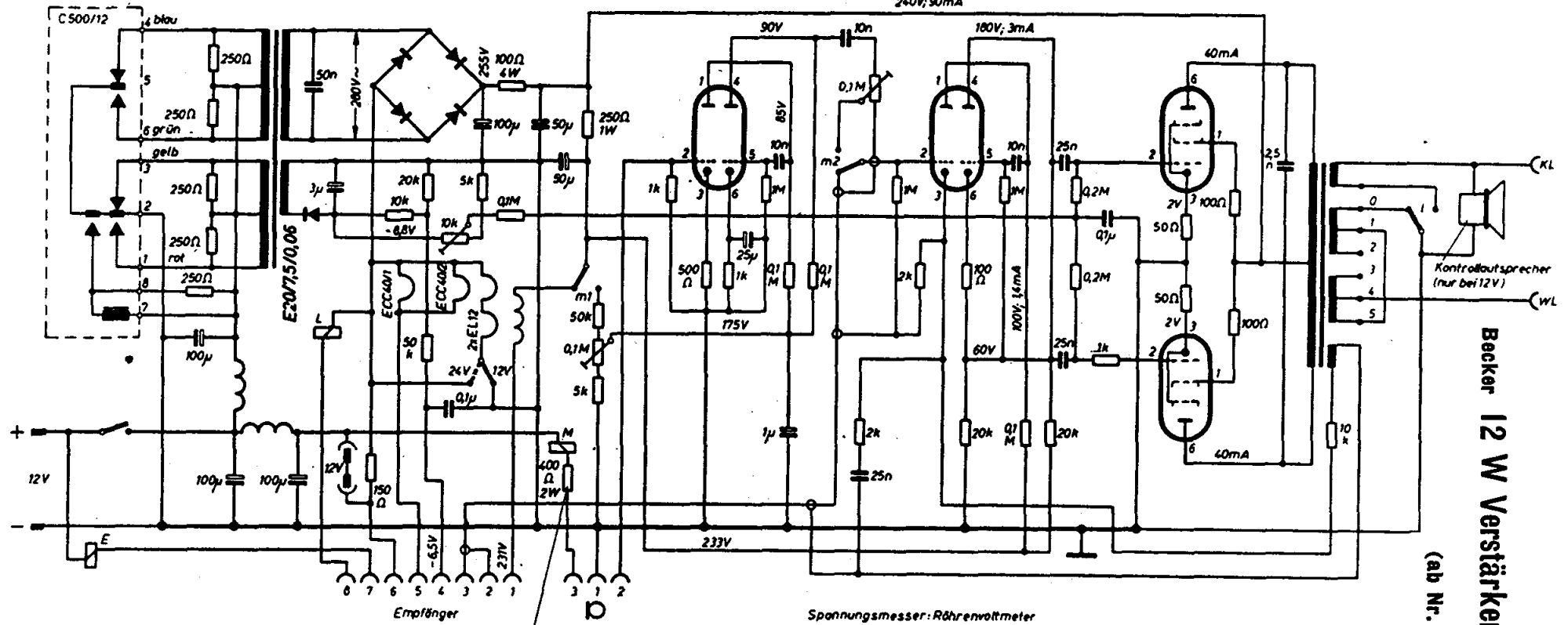


2x B300/100

ECC40/1

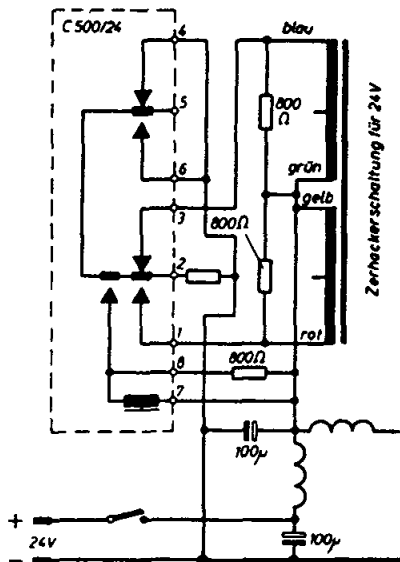
ECC40/2

2x EL12/375



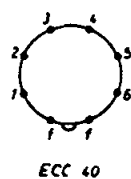
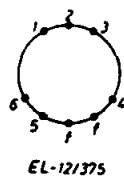
Becker 12 W Verstärker mit Umrichter

(ab Nr. 18031)

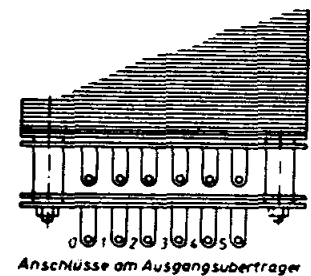
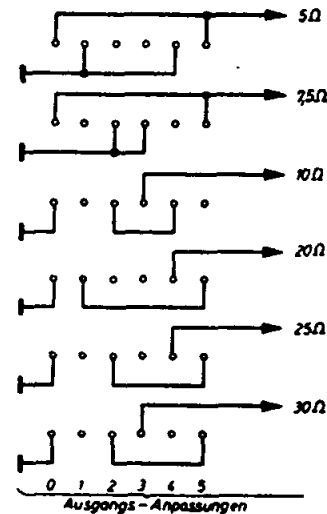


nur bei 24V Ausführung

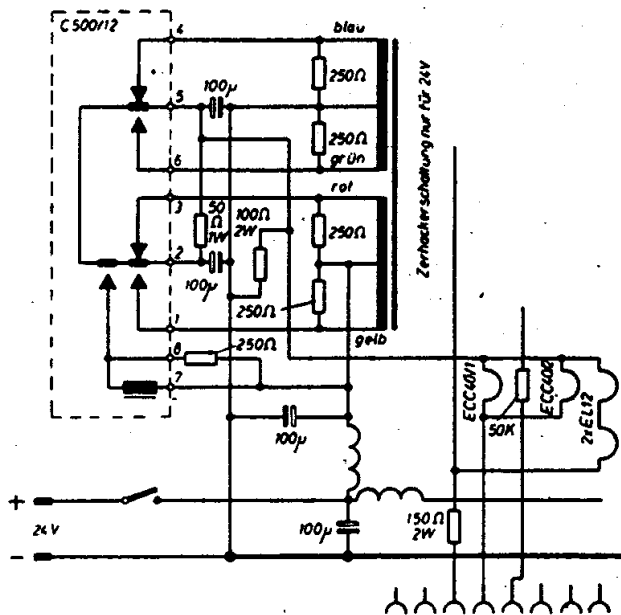
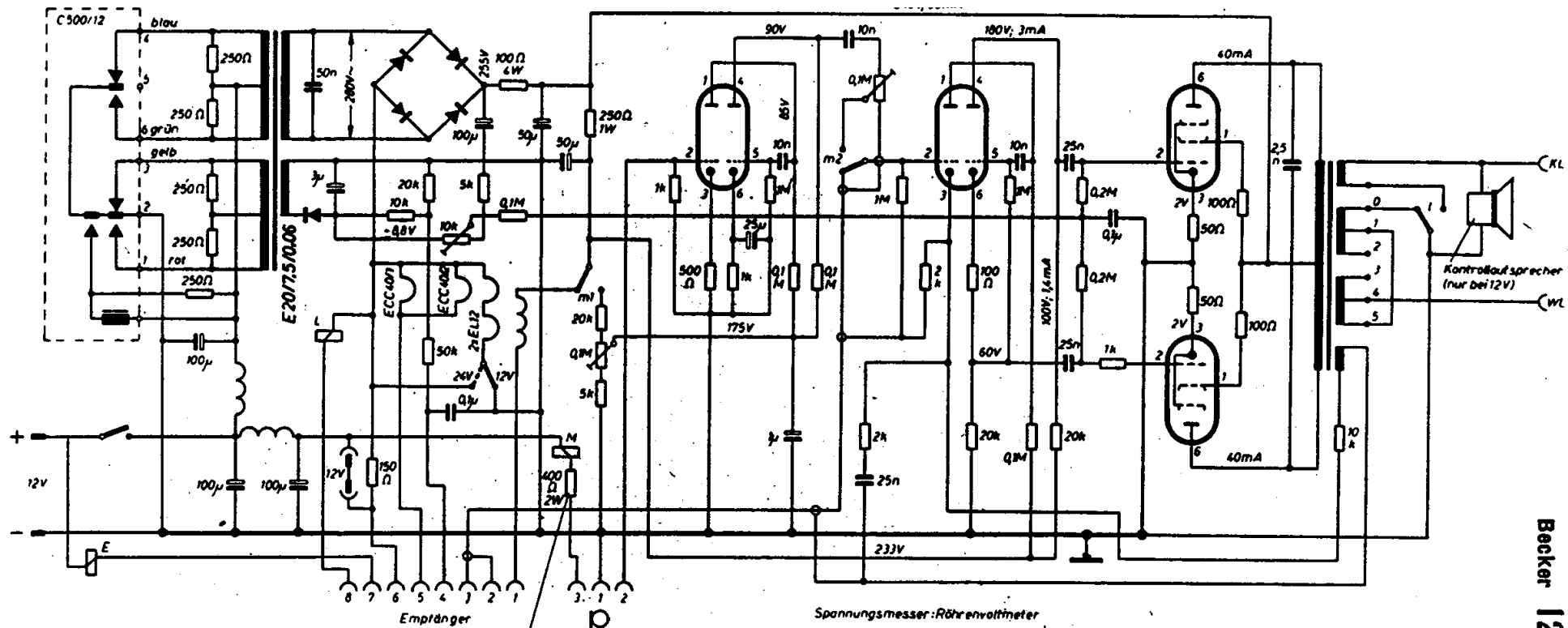
- E = Einschaltrelais
- L = Lautsprecherrelais
- M = Mikrofonrelais
- KL = Kontroll-Lautsprecher
- WL = Wagen-Lautsprecher



Spannungsmesser: Röhrenvoltmeter

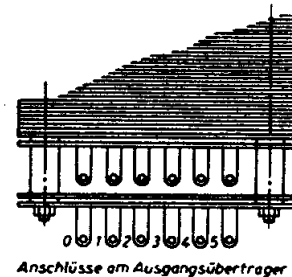
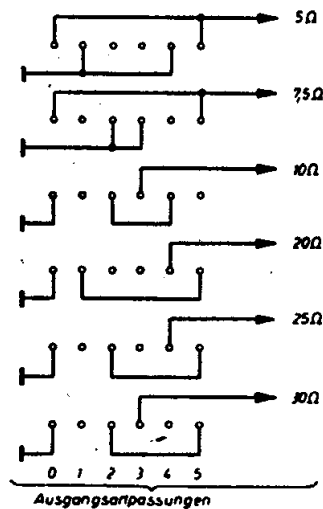
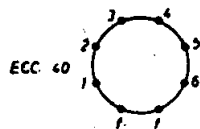
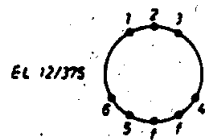


Anschlüsse am Ausgangsübertrager



nur bei 24V Ausführung

E = Einschaltrelais
 L = Lautsprecherrelais
 M = Mikrofonrelais
 KL = Kontroll-Lautsprecher
 WU = Wagen-Lautsprecher



(ab Nr. 18130)

Becker 12 W Verstärker mit Umrichter