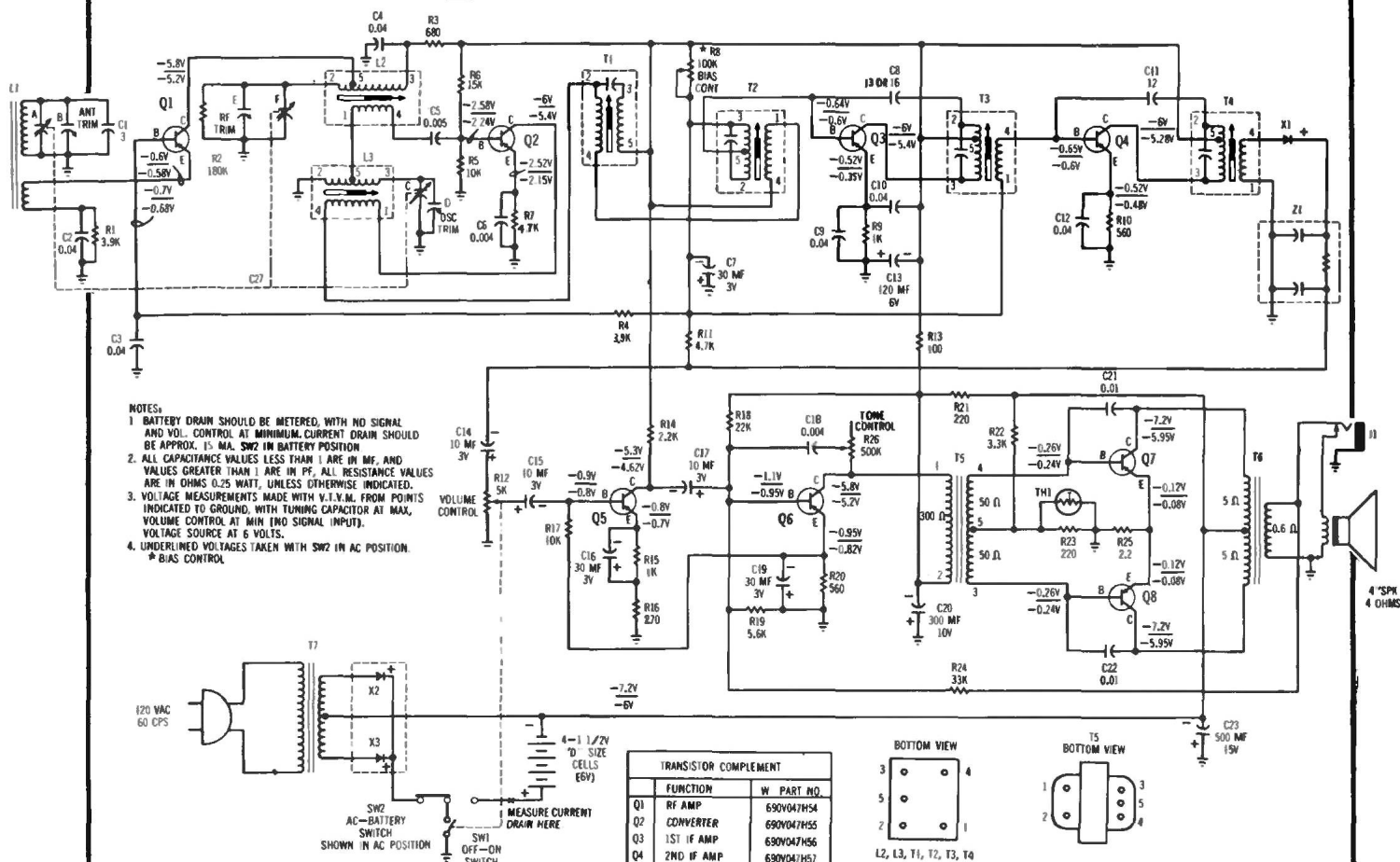


Westinghouse

MODEL
CR-566

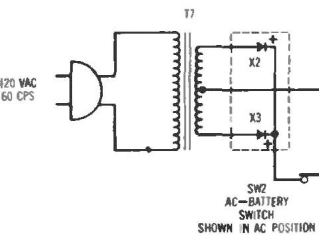
MODEL
H-953XP8

CHASSIS V-2580-1

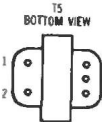
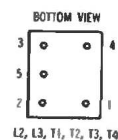


NOTES:

1. BATTERY DRAIN SHOULD BE METED, WITH NO SIGNAL AND VOL. CONTROL AT MINIMUM. CURRENT DRAIN SHOULD BE APPROX. 15 MA. SW2 IN BATTERY POSITION.
2. ALL CAPACITANCE VALUES LESS THAN 1 ARE IN MF, AND VALUES GREATER THAN 1 ARE IN PF. ALL RESISTANCE VALUES ARE IN OHMS 0.25 WATT, UNLESS OTHERWISE INDICATED.
3. VOLTAGE MEASUREMENTS MADE WITH V.I.V.M. FROM POINTS INDICATED TO GROUND, WITH TUNING CAPACITOR AT MAX. VOLUME CONTROL AT MIN (NO SIGNAL INPUT). VOLTAGE SOURCE AT 6 VOLTS.
4. UNDERLINED VOLTAGES TAKEN WITH SW2 IN AC POSITION.

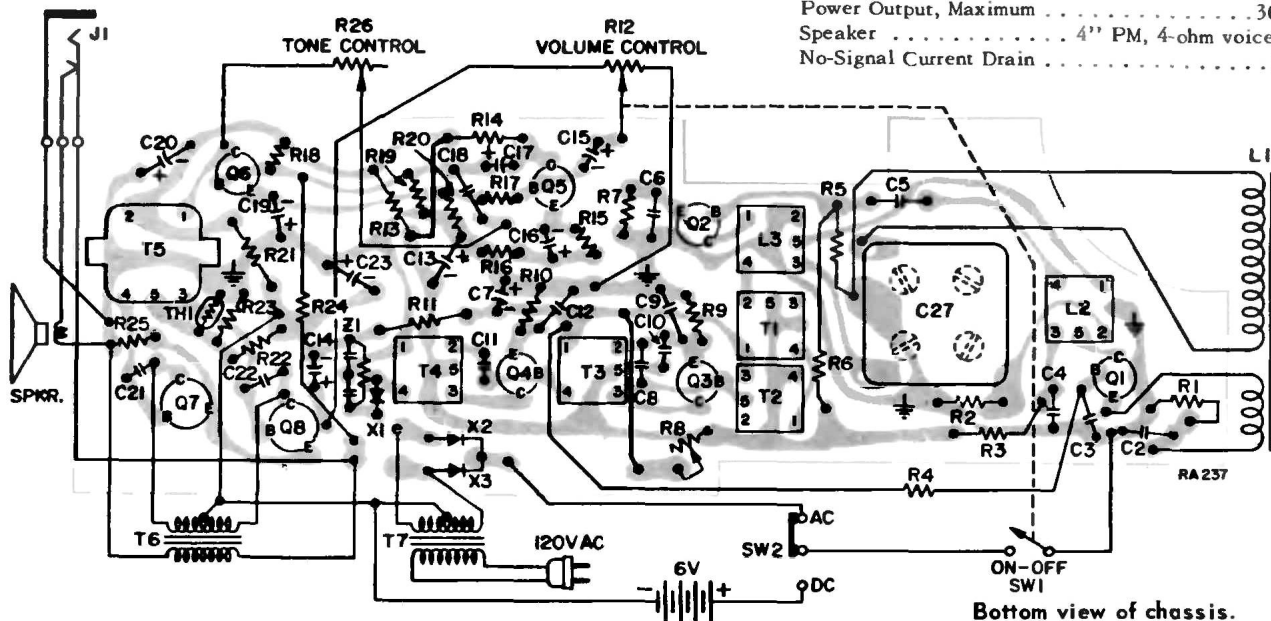


TRANSISTOR COMPLEMENT		
Q1	FUNCTION	W. PART NO.
Q1	RF AMP	690V047H54
Q2	CONVERTER	690V047H55
Q3	1ST IF AMP	690V047H56
Q4	2ND IF AMP	690V047H57
Q5	1ST AUDIO	690V047H58
Q6	AUDIO DRIVER	690V047H58
Q7	AUDIO OUTPUT *	690V047H60
Q8	AUDIO OUTPUT *	690V047H60
*	MATCHED PAIR	



SPECIFICATIONS

AM Frequency Range 540KC to 1600KC
AM Intermediate Frequency 455KC
Power Output, Maximum 300mw
Speaker 4" PM, 4-ohm voice coil
No-Signal Current Drain 15ma



Bottom view of chassis.