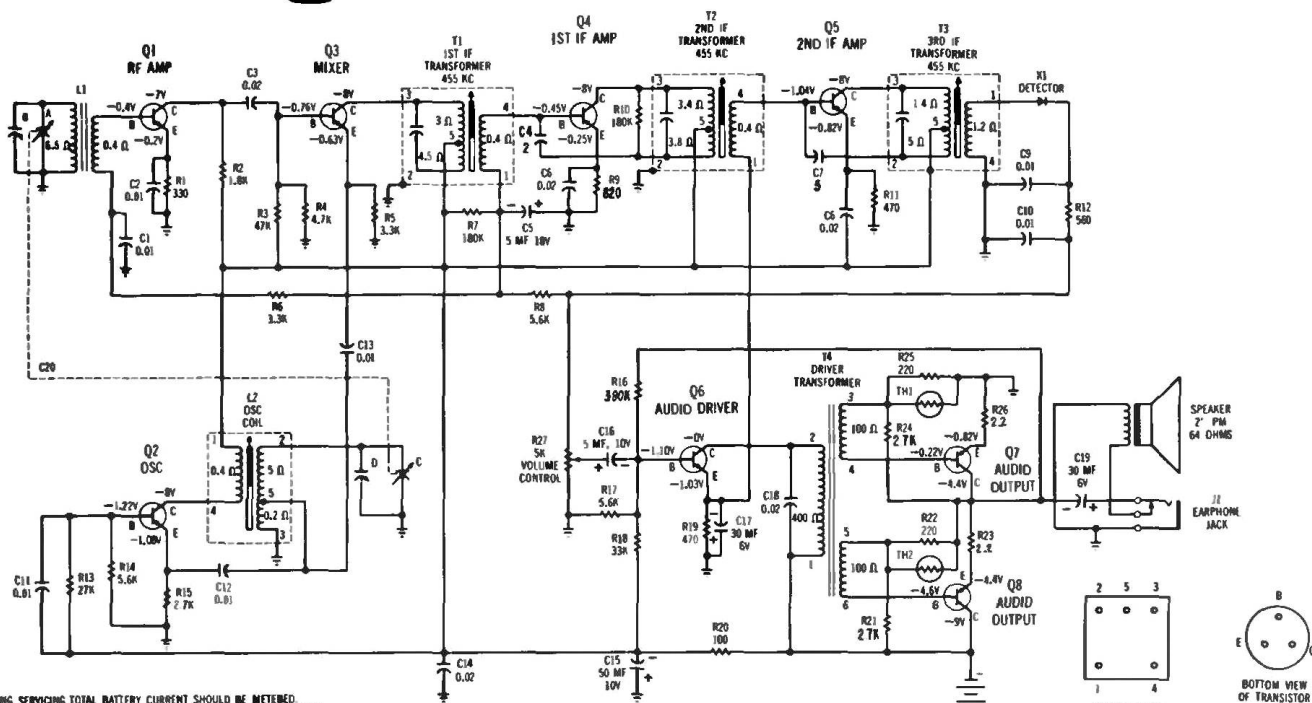


# Westinghouse

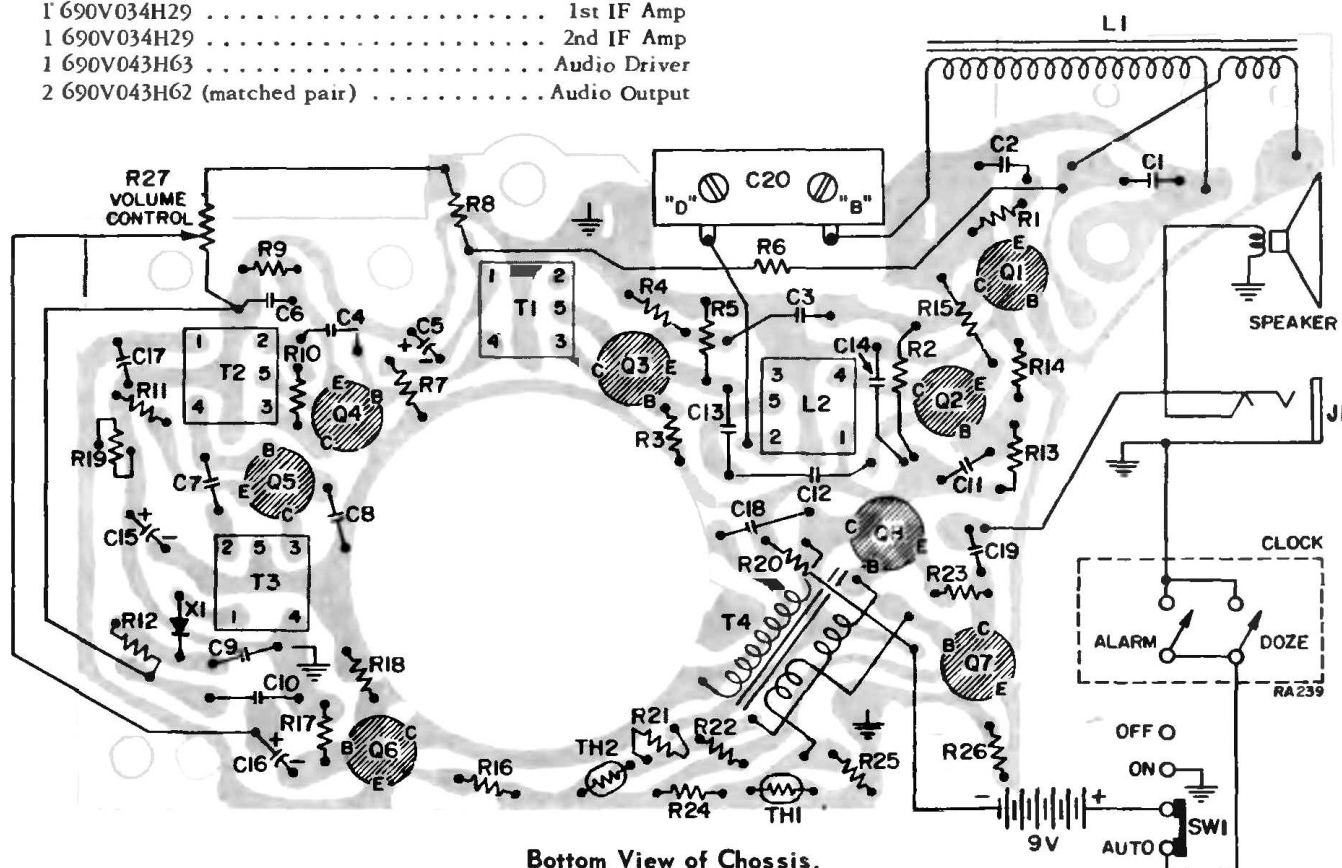
H-968PL  
CHASSIS V-2585-1



- NOTES:
1. DURING SERVICING TOTAL BATTERY CURRENT SHOULD BE MEASURED. WITH NO SIGNAL AND VOLUME CONTROL AT MINIMUM, TOTAL BATTERY DRAIN SHOULD BE APPROX. 15 MA.
  2. VOLTAGE MEASUREMENTS MADE WITH VTVM POINTS INDICATED TO GROUND, WITH TUNING CAPACITOR AT MAXIMUM, VOLUME CONTROL AT MINIMUM AND BATTERY SOURCE AT 9 VOLTS.
  3. UNLESS OTHERWISE INDICATED, ALL CAPACITANCE VALUES LESS THAN 1 ARE IN MICROFARADS \* VALUES GREATER THAN 1 ARE IN MICROFARADS, ALL RESISTANCE VALUES ARE IN OHMS, 0.25 WATT.
  4. ALL TRANSFORMER RESISTANCES TAKEN OUT OF CIRCUIT.

## Transistor complement

- |                             |              |
|-----------------------------|--------------|
| 1 690V066H89                | RF Amp       |
| 1 690V066H89                | Osc          |
| 1 690V066H89                | Mixer        |
| 1 690V034H29                | 1st IF Amp   |
| 1 690V034H29                | 2nd IF Amp   |
| 1 690V043H63                | Audio Driver |
| 2 690V043H62 (matched pair) | Audio Output |



Bottom View of Chassis.