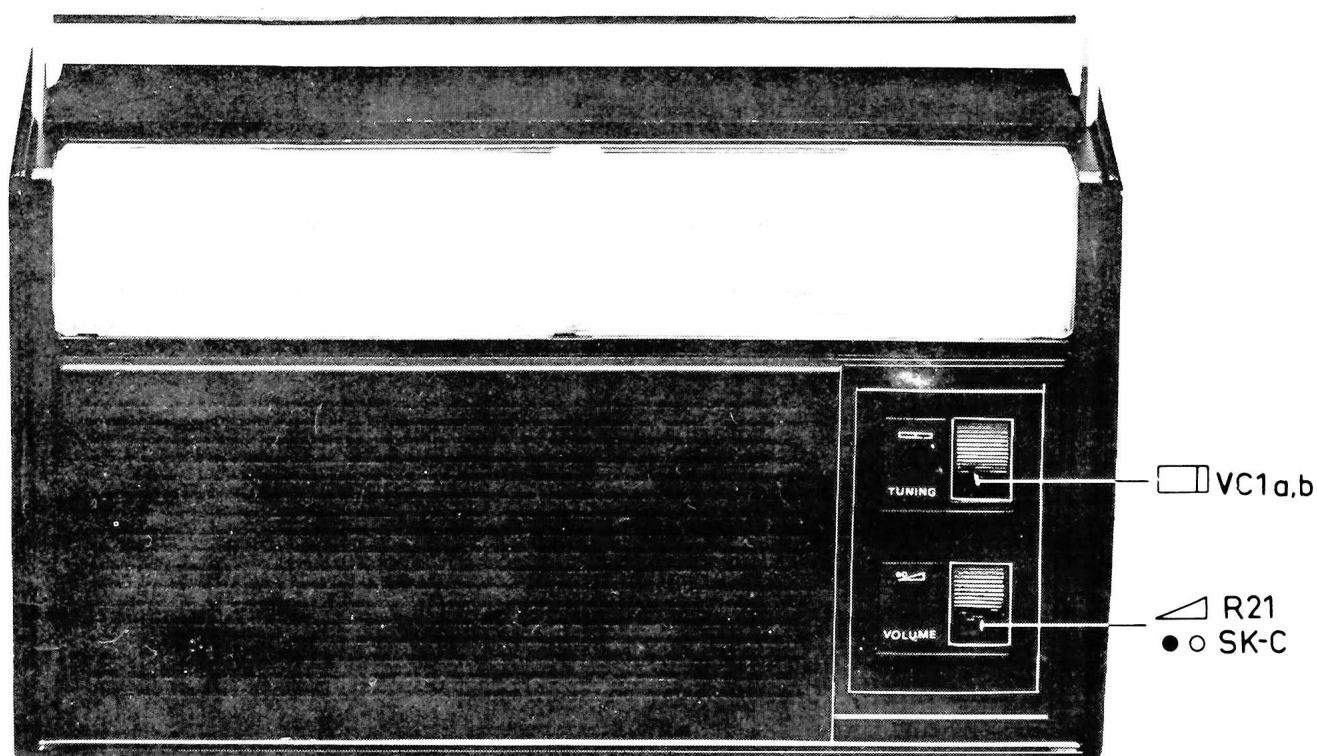


NOTICE TECHNIQUE

Recepteur - radio

SX1230/29

SR1230 (1112-7A)



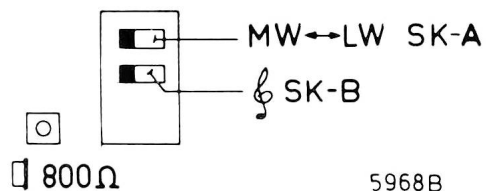
MW: 520 - 1605 kHz (577 - 187m)

LW: 150 - 255 kHz (2000 - 1150m)

IF = 452 kHz

6V (4x1.5V)

ON REAR SIDE

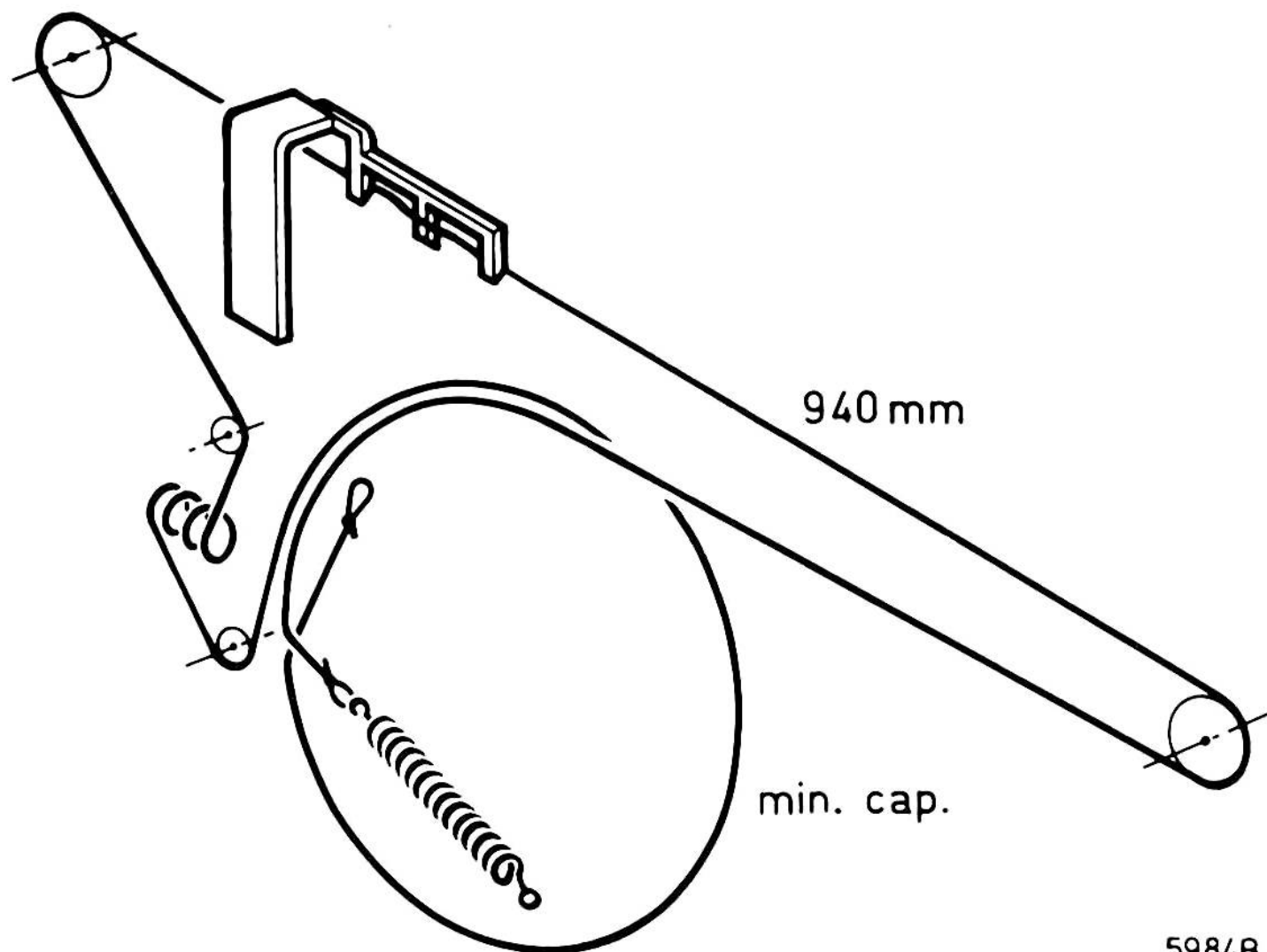


Les normes de sécurité exigent que l'appareil soit remis à l'état d'origine et que soient utilisées les pièces de rechange identiques à celles spécifiées.









SCHNEIDER
RADIO-
TELEVISION

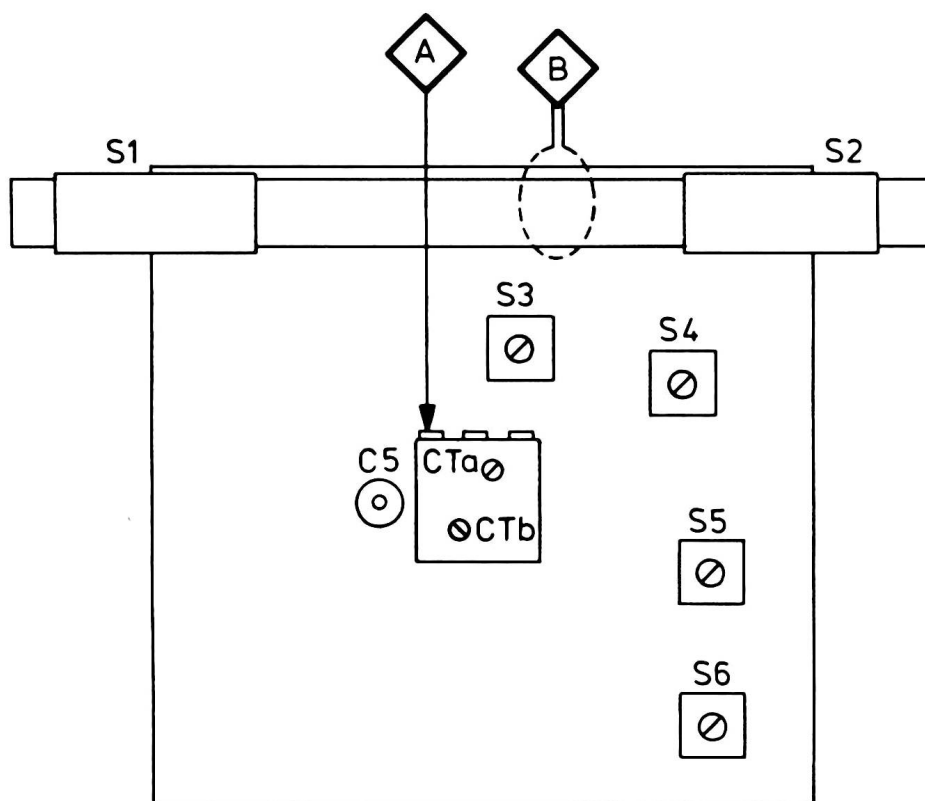
BUREAU TECHNIQUE
12 rue L. Bertrand - 94 Ivry-sur-Seine

DÖC 101 760 206



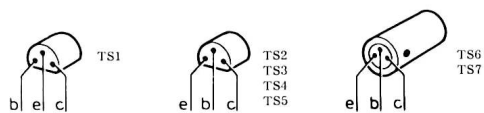
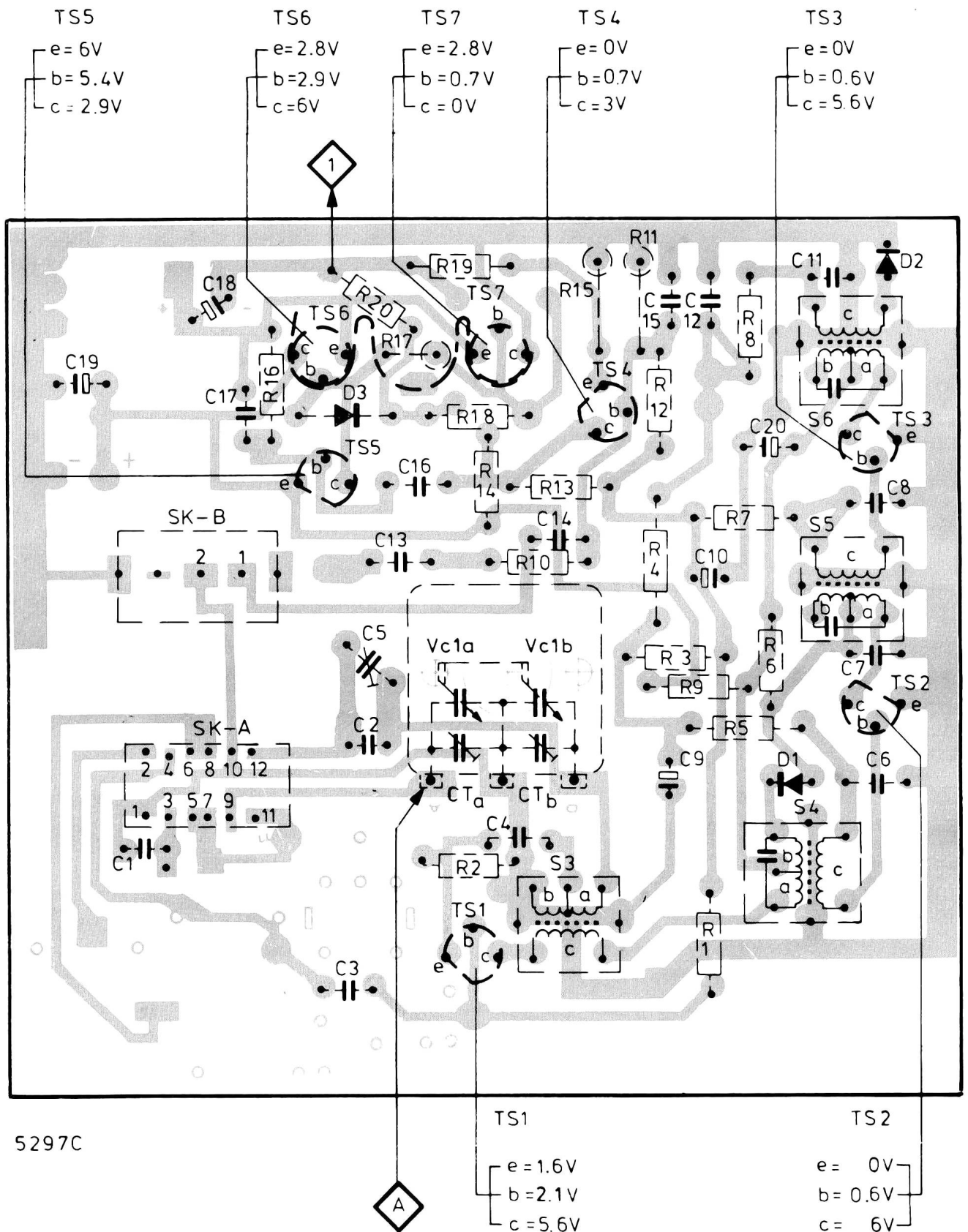
59848

Wave range SK...	   Signal to	Tuning 	Adjust 	Indication 		
MW (520-1605 kHz)	<div>1</div> via 39 nF	<div>A</div>	Min. Cap.	S4,S5,S6	S4,S5,S6	<div>1</div> max.
MW (520-1605 kHz)	512 kHz	<div>B</div>	Max. Cap.		S3	<div>1</div> max.
	1635 kHz		Min. Cap.		CTb	
	600 kHz				S1	
	1400 kHz		Tune in		CTa	
LW (150-255 kHz)	147 kHz	<div>B</div>	Max. Cap.		C5	<div>1</div> max.
	250 kHz				S2	
Repeat - Herhalen - Répéter - Wiederholen - Repitanse						
<div>1</div> Align. AM.IF. = 452 kHz						



5271A

MISC.	SK-A,B		TS5,6 D3 Vc1a CTa TS1		CTb S3 TS7,4 Vc1b		D1 S4÷6 TS2,3 D2	
C	19 1	18 17	3 2 5	13 16	4 14	15	9 10 12 20 11	6÷8
R		16	20	17 19 2	18 14 10	13 15 11	4 12 3 1	5÷9



MISC.	SK-A,B	TS5,6 D3	Vc1a CTa TS1	S1 CTb S3	TS7,4Vc1b	D1 S4÷6	TS2,3 D2	S2	SK-C	S7
C	19 1	18 17	3 2 5 13 16	4 14	15	9 10 12 20 11	6÷8			
R		16	20 17 19	2 18 14 10 13 15	11 4 12 3 1	5÷9			21	

