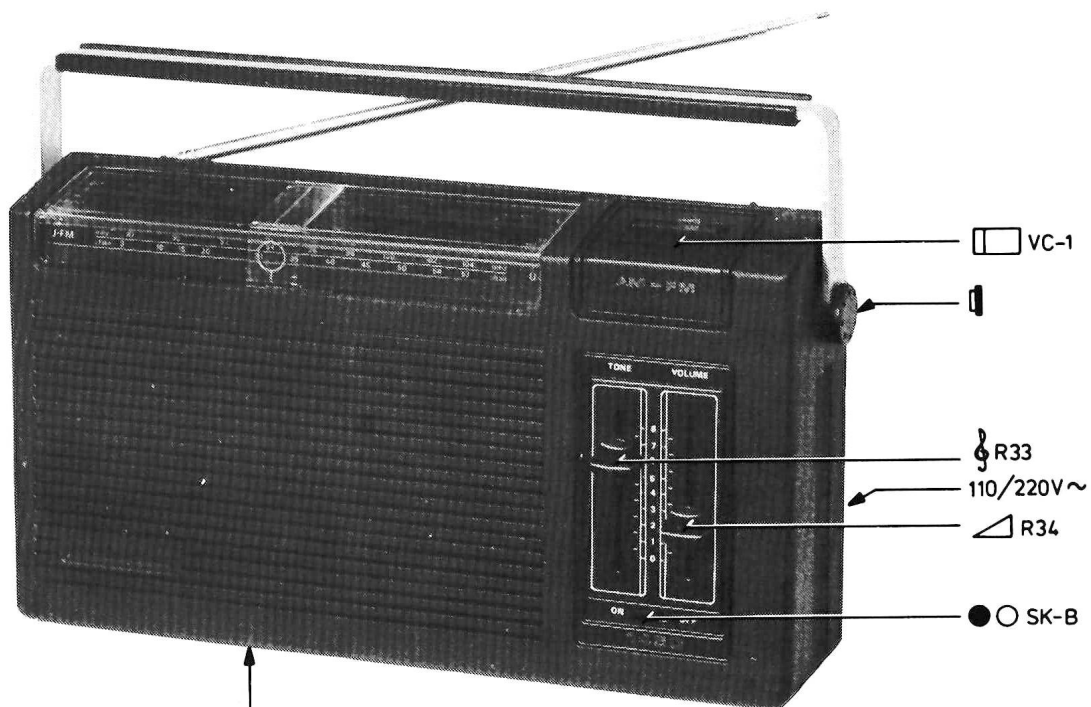


NOTICE TECHNIQUE

Recepteur-Radio

SX1450/29

SR1450 (1116-1D)



FM: 87.5-104 MHz
MW: 520-1605 kHz (577-187m)
LW: 150-255 kHz (2000-1150m)
- 6V (4x 1.5V-R20)

SK-A
FM-MW-LW

IF-FM = 10.7 MHz
IF-AM / 00/13/14/29/31/33 = 452 kHz
IF-AM / 16/22/30/38 = 460 kHz
IF-AM / 15 = 470 kHz

8203B7

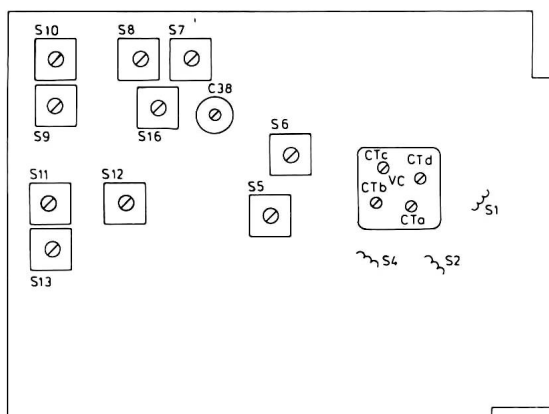
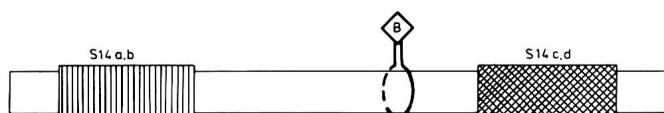
Les normes de sécurité exigent que l'appareil soit remis à l'état d'origine et que soient utilisées les pièces de rechange identiques à celles spécifiées.

SCHNEIDER
RADIO-
TELEVISION

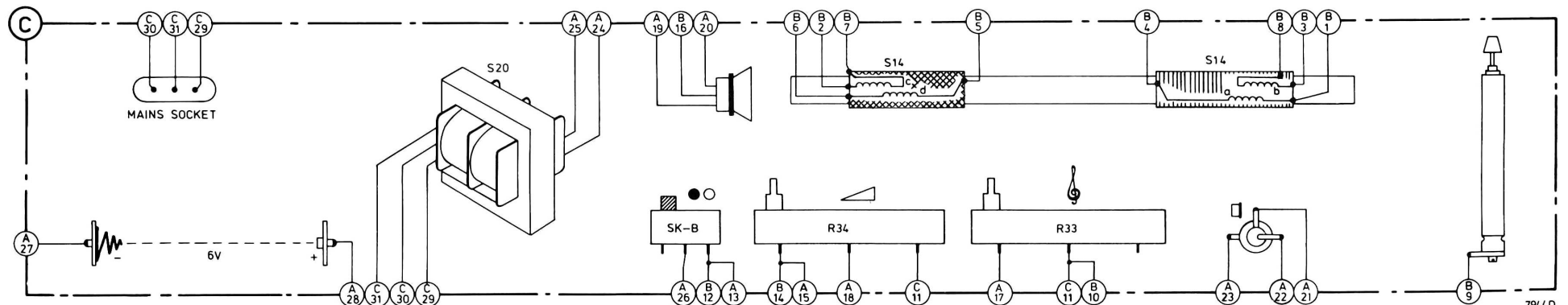
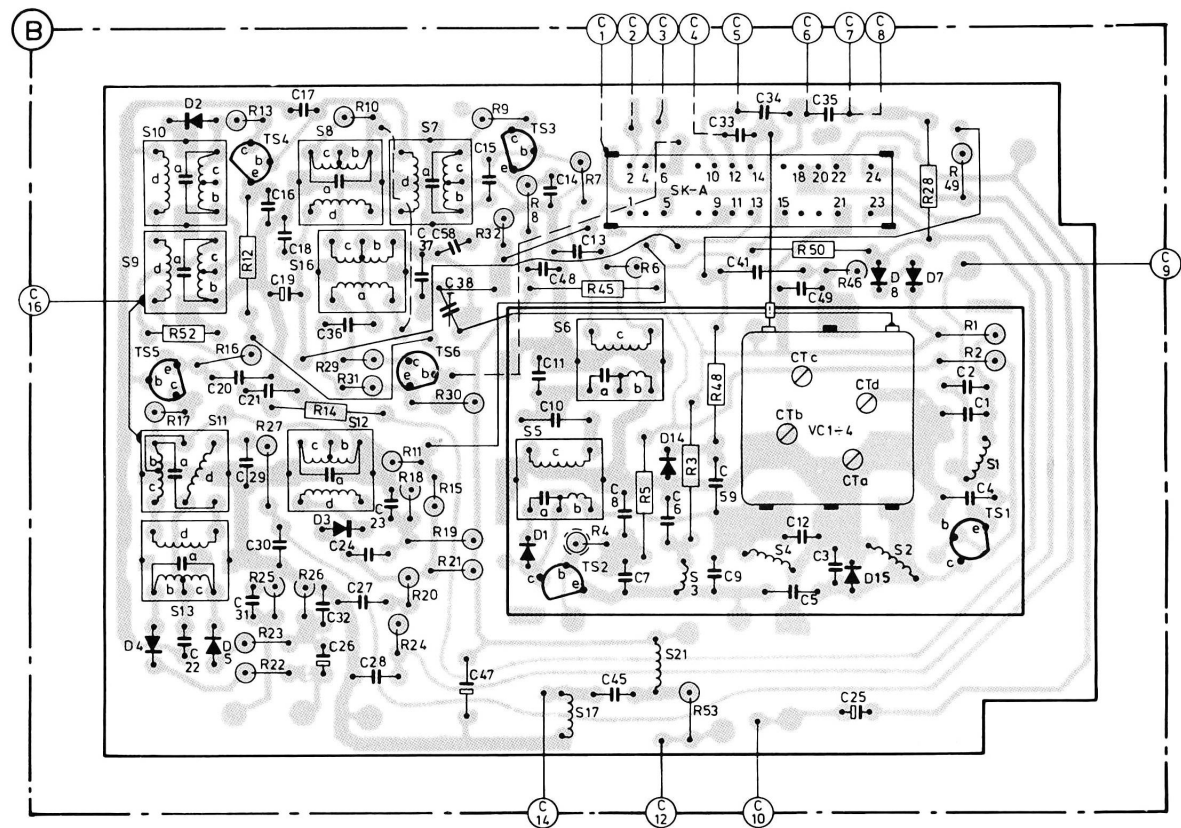
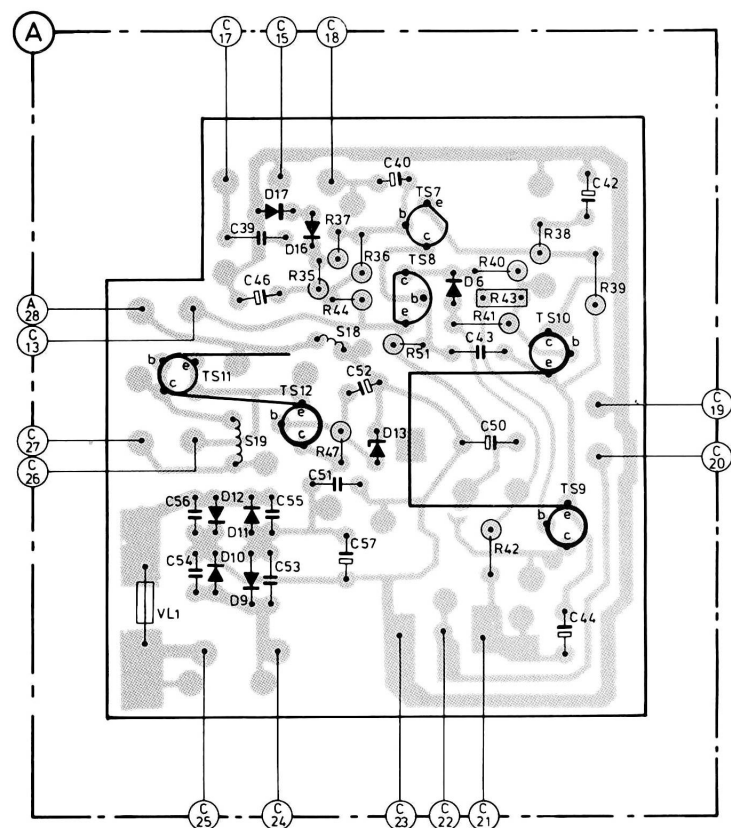
BUREAU TECHNIQUE
12, rue L. Bertrand - 94 Ivry-sur-Seine

D0C 101 760 218

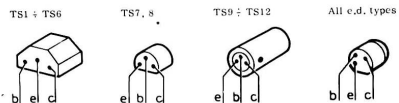
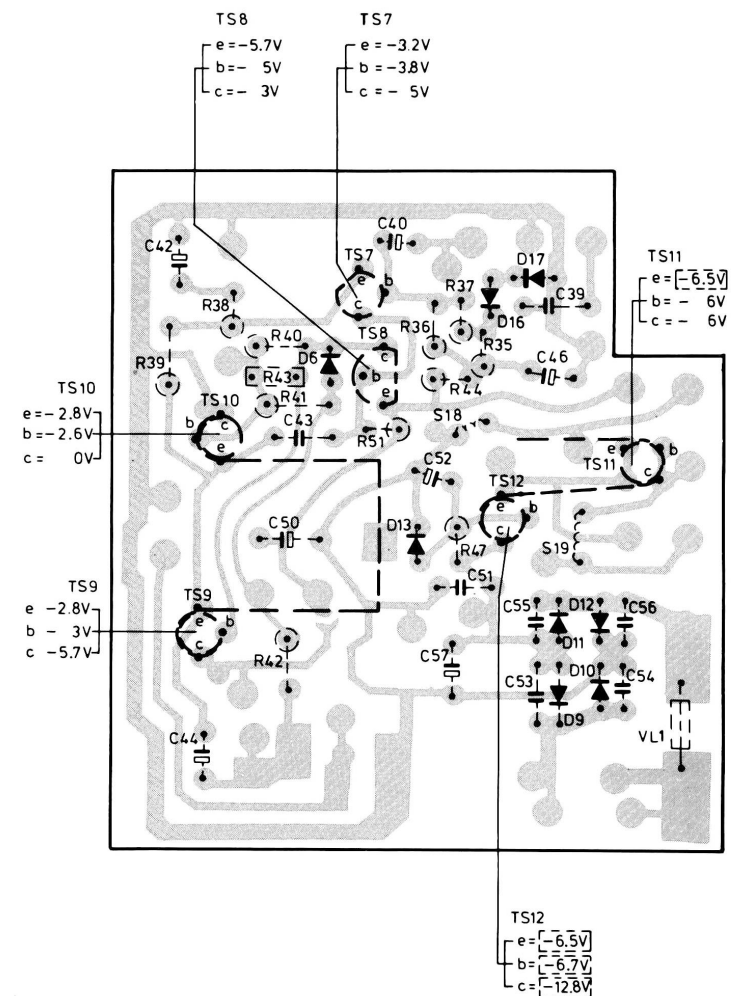
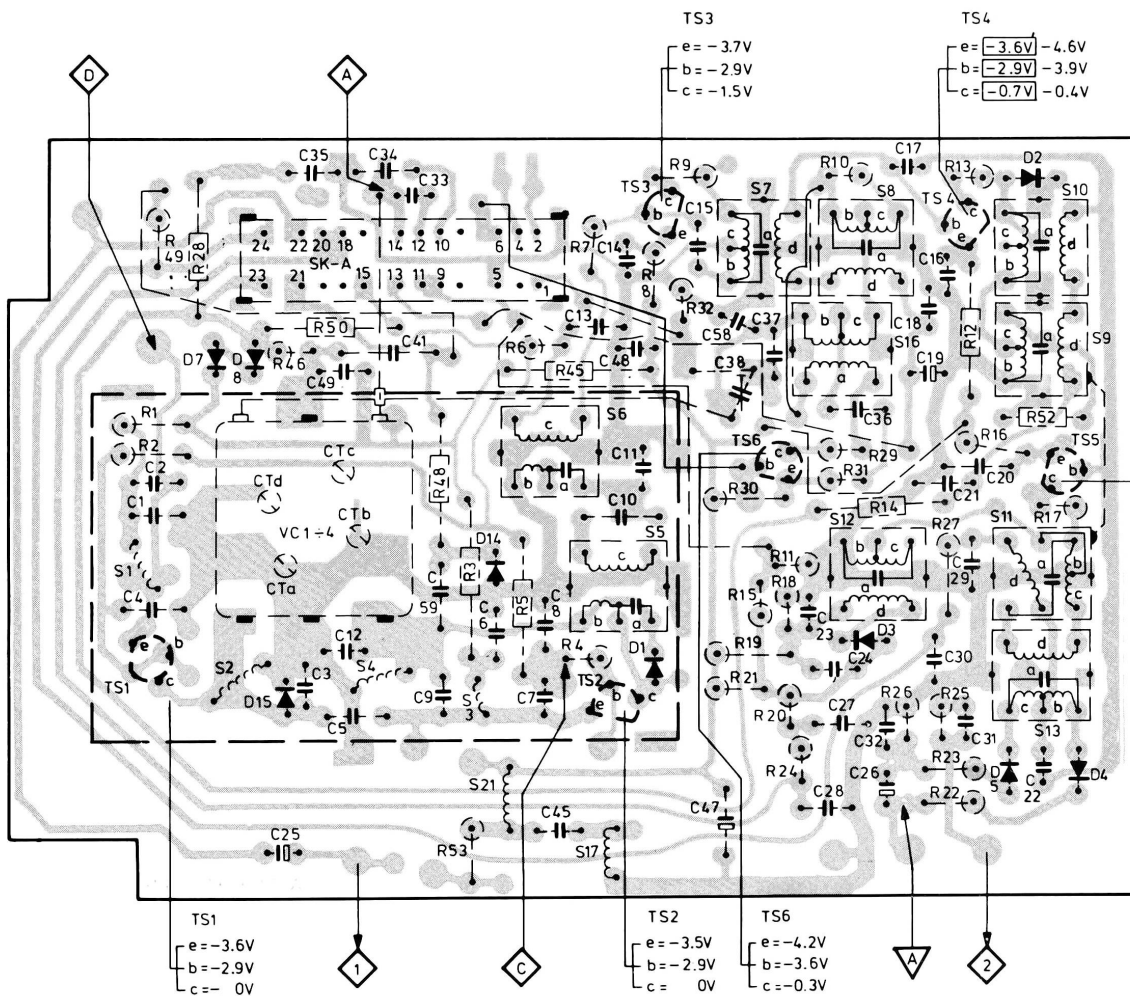
Wave range SK.....	Signal to 		Varicap 	Detune 	Adjust 	Indication 	
MW (520-1605 kHz)	<div>1</div> via 39 nF	<div>A</div>	Min.Cap.	S9, S12	S12	<div>1</div> via 100 kΩ Max.	
					S9		
					S8		
	512 kHz	<div>B</div>	Max.Cap.	S16			
	1635 kHz		Min.Cap.	CTd			
	600 kHz		Tune in	S14 (a-b)			
	1400 kHz			CTc			
LW (150-255 kHz)	147 kHz	<div>B</div>	Max.Cap.		C38	<div>1</div> via 100 kΩ Max.	
	200 kHz		Tune in		S14 (c-d)		
FM (87.5-104 MHz)	10.7 MHz via 39 nF $\Delta f = 200 \text{ kHz}$ (50 Hz)	<div>C</div>	Min.Cap.	S6,S7,S10,S13	S11	<div>2</div> <div>2</div> via 100 kΩ Max.	
					S10		
					S7		
					S6		
					S5		
						S13	<div>1</div> <div>3</div>
	105 MHz	<div>D</div>	Min.Cap.		CTb	<div>1</div> via 100 kΩ Max.	
	86.5 MHz		Max.Cap.		S4		
	88 MHz		Tune in		S2		
	104 MHz				CTa		
<div>↕</div> Repeat - Herhalen - Répéter - Wiederholen - Ripetere - Repetera - Gentage - Gjentagelse - Toista							



MISC	TS11 D17,16 S18 TS8,7 D6 TS10										S9,10 TS5 D2 TS 4 S16,8 S7 TS6 TS3 S6										SK-A										VC1+4 D8 D7										MISC
MISC	VL1 D9+12 S19 TS12 D13 TS9 S20										SK-B										D4 S13 D5 S11 D3 S12 S14 c,d S5 D1 S17 TS2 D14 S21 S3 S14a,bS4 D15 S2 TS1 S1										MISC										
C	39 46										20 21 16 +19 36 37 58 15 38 48 11 14 13										41 33+35 CTb CTc 49 CTd 2 1										C										
C	56 54 55 53 S1 57										22 29+31 26 24 32 27 23 28 47 10 45 8 7 6 59 9 S12 3 CTa 25 4										C																				
R	35 37 44 36 51 41 40 43 38 39										17 52 16 12 13 14 29 31 10 30 32 9 8 7 45 6 48 50 46 28 49										R																				
R	47										22 23 34 25+27 24 11 18+21 15 33 4 5 3 53										R																				



MISC	D7 D8 SK-A VC1÷4															S6 TS3					TS6 S7			S8,16 TS4			D2 TS5 S10,9					TS10		D6 TS7,8		S18		D16,17		TS11		MISC
MISC	S1		TS1	S2	D15		S4		S3,21		D14	TS2	S17	D1	S5	S12		D3	D5		S13	D4		TS9		D13		TS12	S19	D9-12		VL1	MISC									
C	1 2		CTd		49	CTc	CTb	35	34	41	13 14 11		48	38	15	58 37		36 16-19		21 20				42		43		40		52	46 39			C								
C	4		25		CTa	3	12	5	9 59		6	7	8	45	10	47		28	23	27	32	24	26	29-31		22		44		50		57		51	53	55	54	56	C			
R	49		28		46		50		48		6	45	7	8		9	32	30	10		31	29	14	13 12		16	52		17	39		38	43	40	41	51	36	44	37	35	R	
R	2 1								53		3	5	4		15	24	18-21		11	24	25-27		23	22		42		47									R					



MISC	S1	D15	TS1	S2	S3	TS2	D1	S5	S6	TS3	S7	S8	TS4	D2	S9	S10	TS5	S11	S12	D3	S13	D4	D5					D16	D17	TS7			D6	TS8	TS10	TS9	LS	MISC						
MISC							S4		D14	S14			TS6	S16					D7	D8			S21	S17					S19	S18	TS11	TS12	D13			D9-12	S20		MISC					
C	2	1	4	3	6	5	7	8	9		10	11	13	15	14	19	18		16	17		21	22	20		24	23	29	27	26	30	28	31	22	25	39	40	42	43		44		C	
C							12	34	33	59		41	35		36	58		37	38		49	48	47	45	46	50				52		57	51		53-56					C				
R	1		2		3	4	5		6	7		8	10	9	50		12	13	52	11	14	15	16	17	19	18	21	20	22	23	24	27	25	26	49	33	34	35-37	51	38	39	40-43		R
R									48	28			29-31		32				46		45				53	44				47											R			

