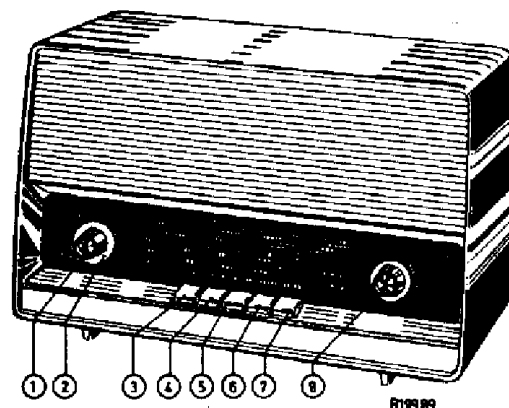


# PHILIPS

# Service

## RADIO

### B3X16A /00K/00R



Controls		Bediening	Bedienung	Commande		Mandos
Volume control	1	Volumeregelaar	Lautstärkeregler	Contrôle de volume	1	Control de volumen
Tone control	2	Toonregelaar	Klangregler	Contrôle de tonalité	2	Regulador de tono
Mains switch	3	Netschakelaar	Netzschalter	Interr.de réseau	3	Interr. de red
M.W. switch	4	M.G.-schakelaar	MW-Schalter	Comm. de P.O.	4	Comm. de O.M.
S.W.3 switch	5	K.G.3-schakelaar	KW3-Schalter	Comm. de O.C.3	5	Comm. de O.C.3
S.W.2a switch	6	K.G.2a-schakelaar	KW2a-Schalter	Comm. de O.C.2a	6	Comm. de O.C.2a
S.W.2b switch	7	K.G.2b-schakelaar	KW2b-Schalter	Comm. de O.C.2b	7	Comm. de O.C.2b
Tuning	8	Afstemming	Abstimmung	Syntonisation	8	Sintonía
P.U. switch	(5) (6)	P.U.-schakelaar	PU-Schalter	Comm. de P.U.	(5) (6)	Comm. de P.U.

Specification		Specificatie	Spezifikation	Specification		Especificación
Loudspeaker	AD 3460X (5Ω)	Luidspreker	Lautsprecher	Haut-parleur	AD 3460X (5Ω)	Altavoz
I.F.	452 Kc/s	M.F.	ZF	M.F.	452 Kc/s	F.I.
Mains voltage	90-110-127- 145-190-220V	Netspanningen	Netzspannungen	Tens.de réseau	90-110-127- 145-190-220V	Tens. de red
Consumption	46 W (220 V)	Verbruik	Verbrauch	Consommation	46 W (220 V)	Consumo
Dimensions	360x221x184mm 14 $\frac{1}{4}$ x8 $\frac{3}{4}$ x7 $\frac{1}{4}$ "	Afmetingen	Abmessungen	Dimensions	360x221x184mm 14 $\frac{1}{4}$ x8 $\frac{3}{4}$ x7 $\frac{1}{4}$ "	Dimensiones

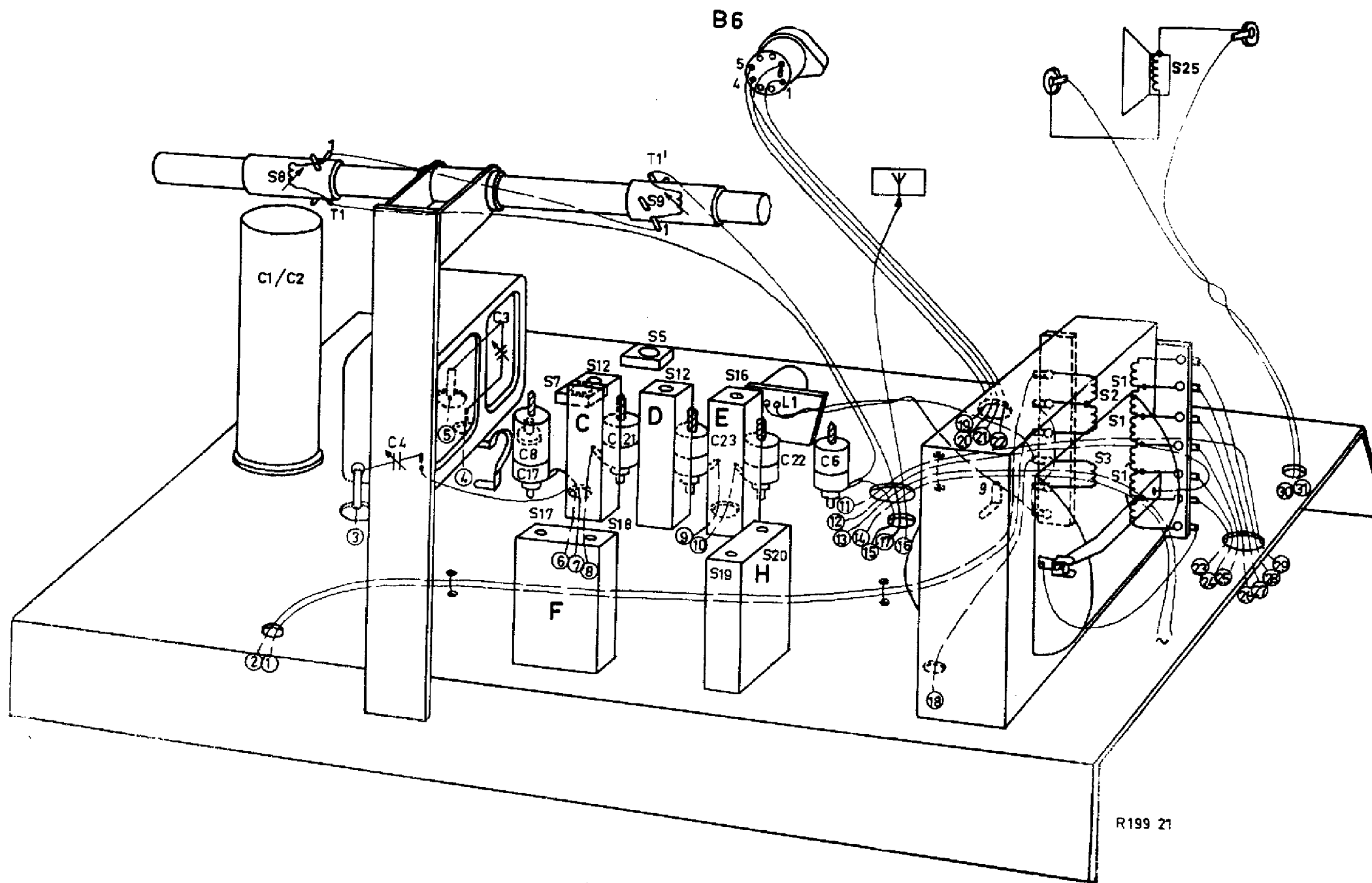
#### Wave ranges - Golfgebieden - Wellenbereiche - Gammas d'ondes - Márgenes de ondas

M.W.	-	M.G.	-	MW	-	P.O.	-	O.M.	:	185,2	-	580	m	(1620	-	517	Kc/s)	
S.W.3	-	K.G.3	-	KW3	-	O.C.3	-	O.C.3	:	30,3	-	95,2	m	(	9,9	-	3,15	Mc/s)
S.W.2a	-	K.G.2a	-	KW2a	-	O.C.2a	-	O.C.2a	:	11,41	-	23	m	(	26,3	-	13	Mc/s)
S.W.2b	-	K.G.2b	-	KW2b	-	O.C.2b	-	O.C.2b	:	25	-	31,75	m	(	12	-	9,45	Mc/s)

#### Valves - Röhren - Röhren - Tubes - Válvulas

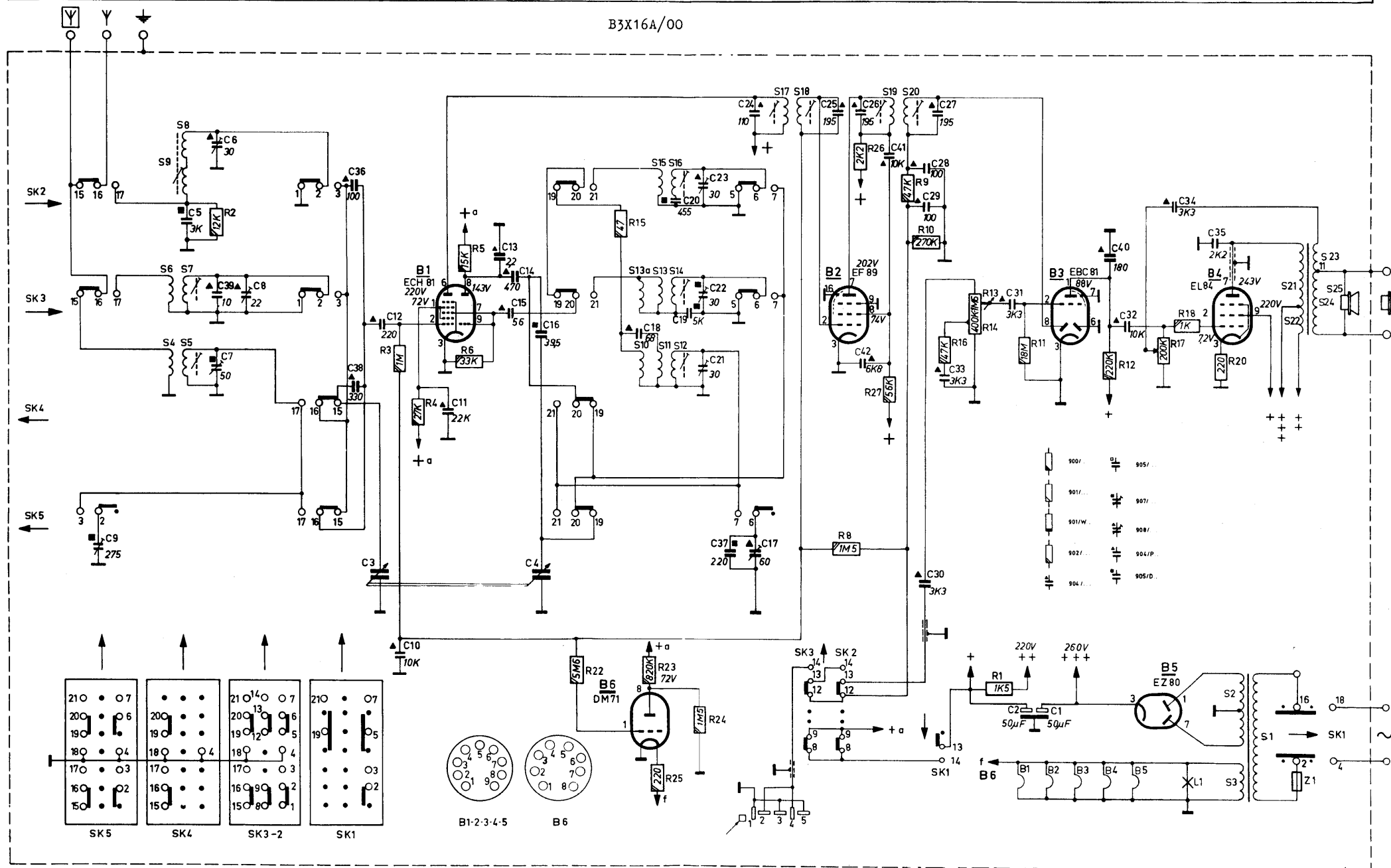
B1 - 6X801	B3 - 6X801	B5 - 6Z60	L1 - 8024D/71
B2 - 6X89	B4 - 6X84	B6 - 6N71	(6 V 0,3 A)

SERVICE INFORMATION																			
------------------------	--	--	--	--	--	--	--	--	--	--	--	--	--	--	--	--	--	--	--

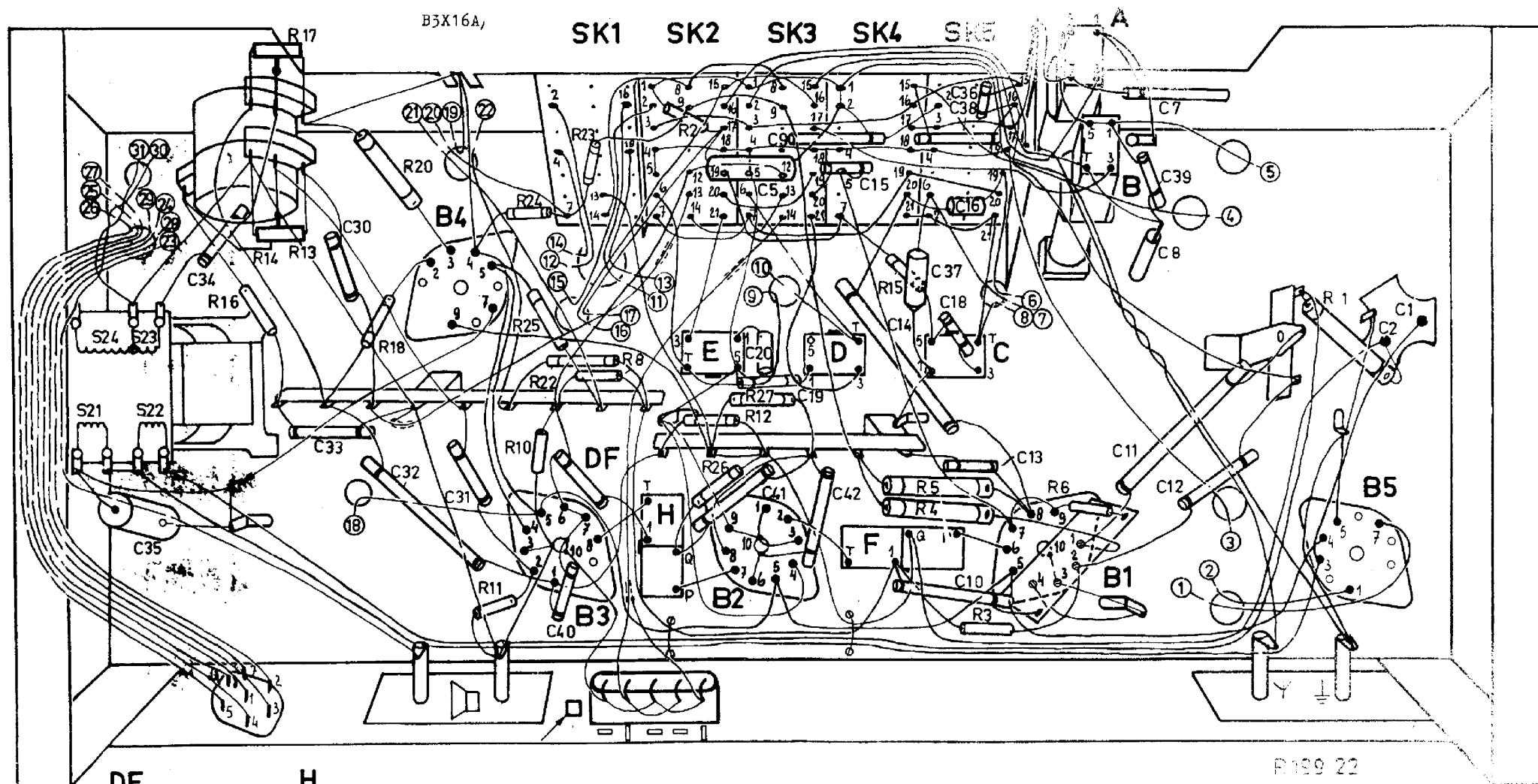


S	9.64.8.7.5.						13a. 10.15.13.11.16.14.12.						17. 18.						19. 20.						2.3. 21. 1. 23.25.24.22.					
C	9.						18. 20.19.22.21.23. 24.37.17.						25. 26.42. 41.28.29. 30.27.33.						31. 2. 1. 40.						32. 34.35.					
R	2.						22. 15. 23. 25. 24.						8. 27. 26. 9. 10. 16. 13.14.1. 11.						12. 17. 18. 20.											

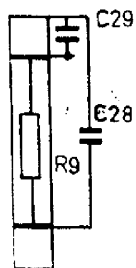
B3X16A/00



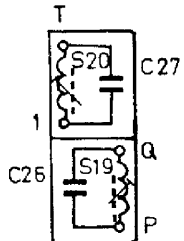
S	21.24.23.22.				DF	H.	E.		D.	F.	C.		A	B	
C	35	34.	30.33.	32. 31.	40.		41. 5.20.19.42.9.15.	14.18.16.37. 38.36.13.10.				8. 39. 7. 11.12.		2. 1.	
R		16.14. 13.17.	18.20.	11.24. 25.10.22. 8.23.	2.	26.12. 27.		15. 5. 4	3.		6.			1.	



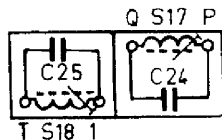
DF



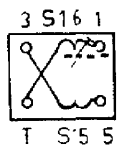
H



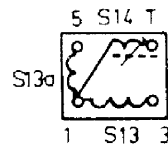
F



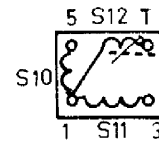
E



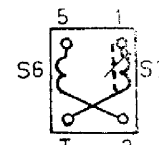
D



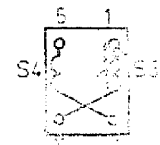
C



B

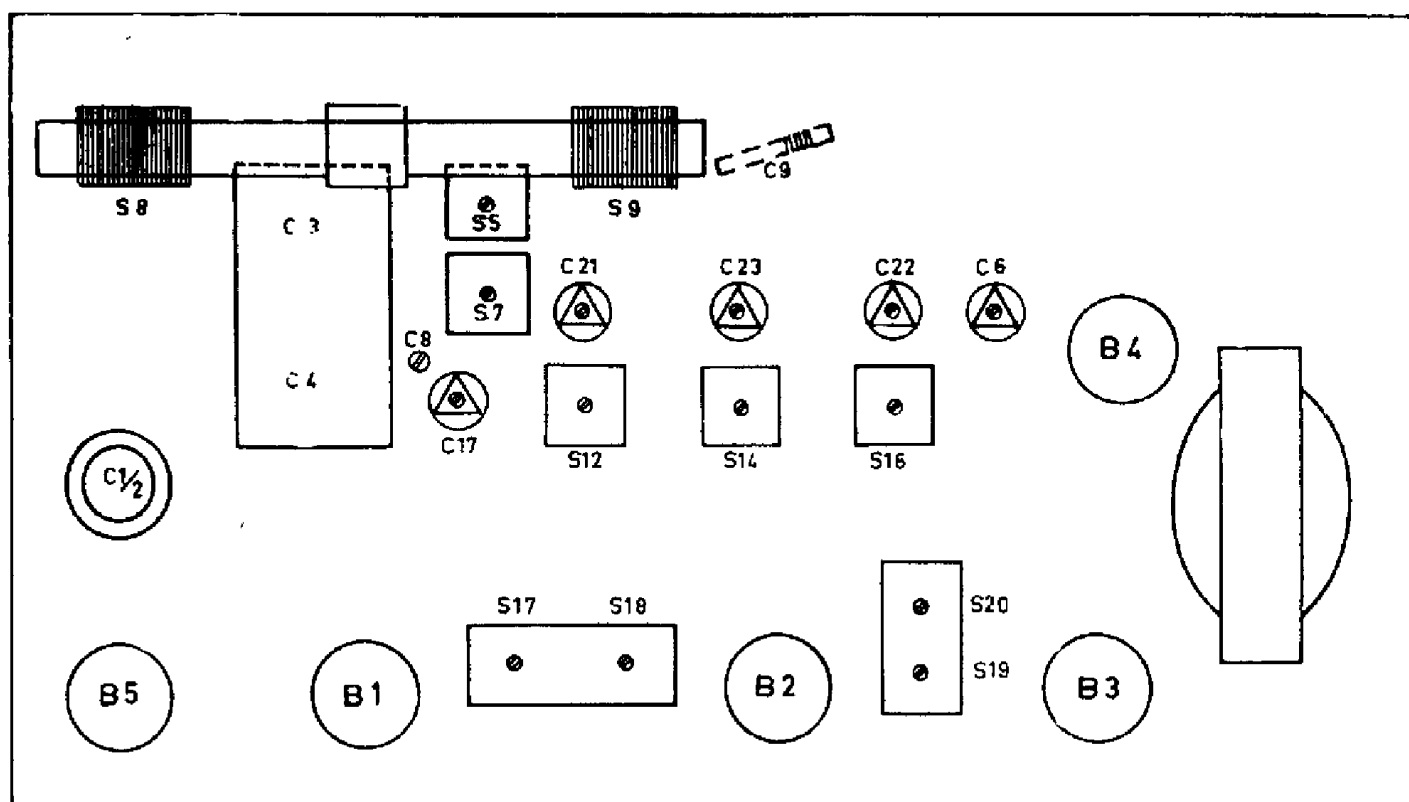


A



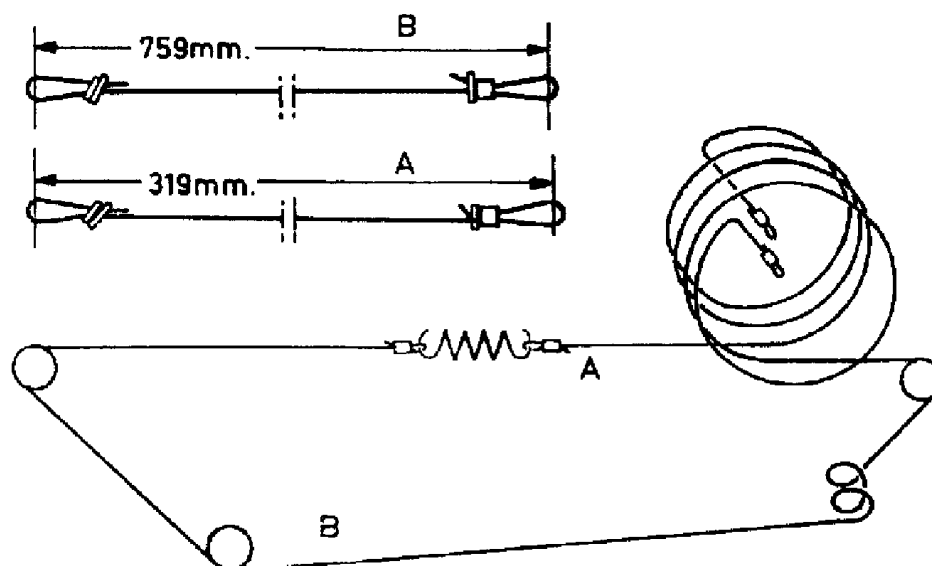
R189 22

R188 22



R186 48

Serv-o-mecum	Push button Drucktoets Drucktaste Touche poussoire Pulsador	Trimming point Trimpunt Trimpunkt Point de réglage Punto ajuste	Signal Signaal Signal Signal Señal	Trim Afregelen Abgleichen Régler Ajustese	Output Uitgangspanning Ausgangsleistung Tension de sortie Tension de salida
E-a-1 E-a-2					
I.F.-M.F.-Z.F.-M.F.-F.I.	4	1	452 kc/s via 33.000 pF g1B1	S20, S19 S17, S18	
R.F. and oscillator circuits	4	3	550 kc/s	S16, S9	Max.
H.F.- en oscillator- kringen		2	1500 kc/s	C23, C6	
H.F.- und Oszillator- kreise	5	3	3.4 Mc/s	S14, S7	
Circuits H.F. et oscillateurs		2	9.4 Mc/s	C22, C8	
Circuitos de R.F. y oscillador	6	3	13 Mc/s	S12, S5	
		2	25 Mc/s	C21, C7	
	7	2	12 Mc/s	C17, C9	



R186 47