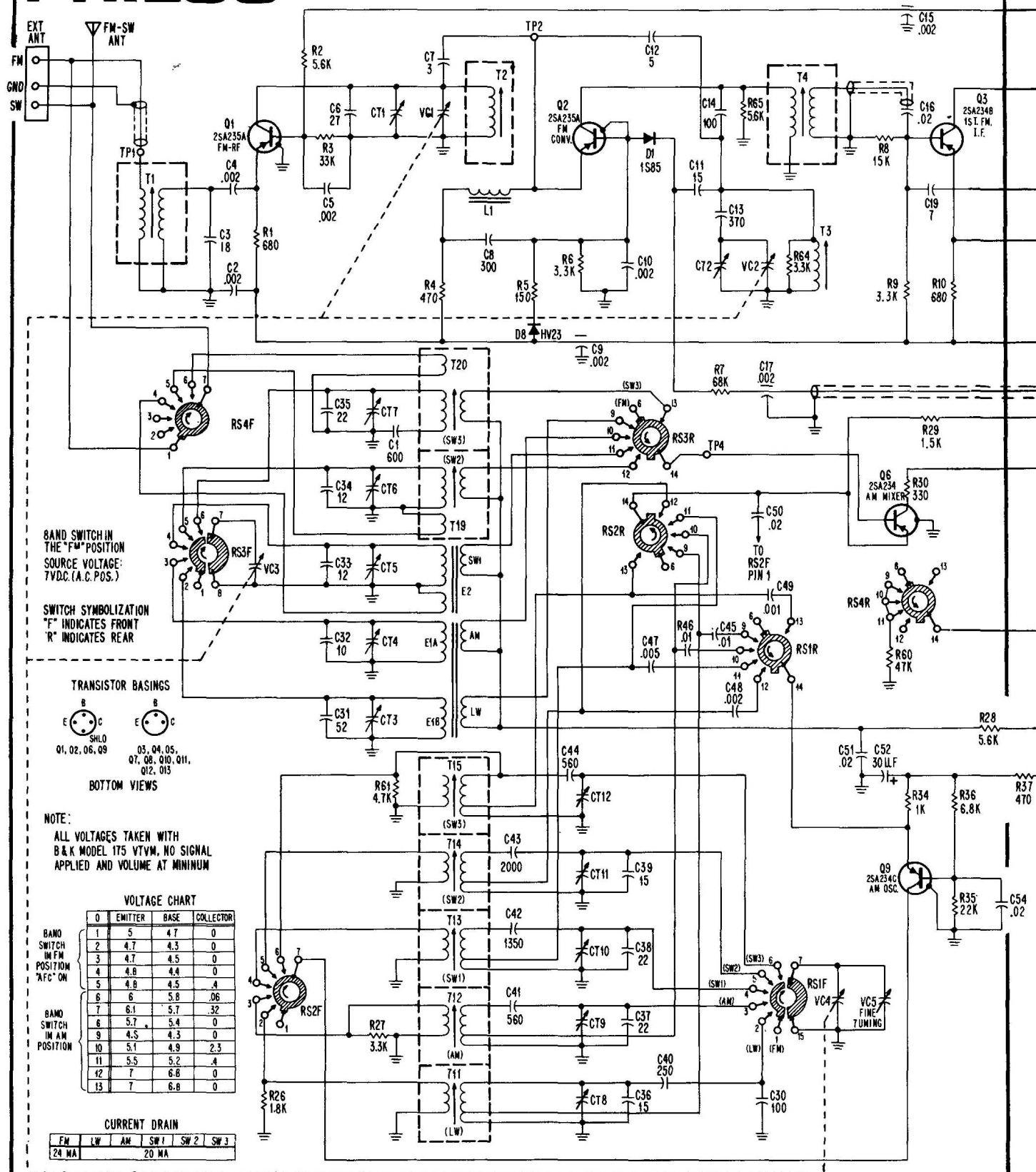


PHILCO MODEL ST989BK

(Continued on next two pages.)

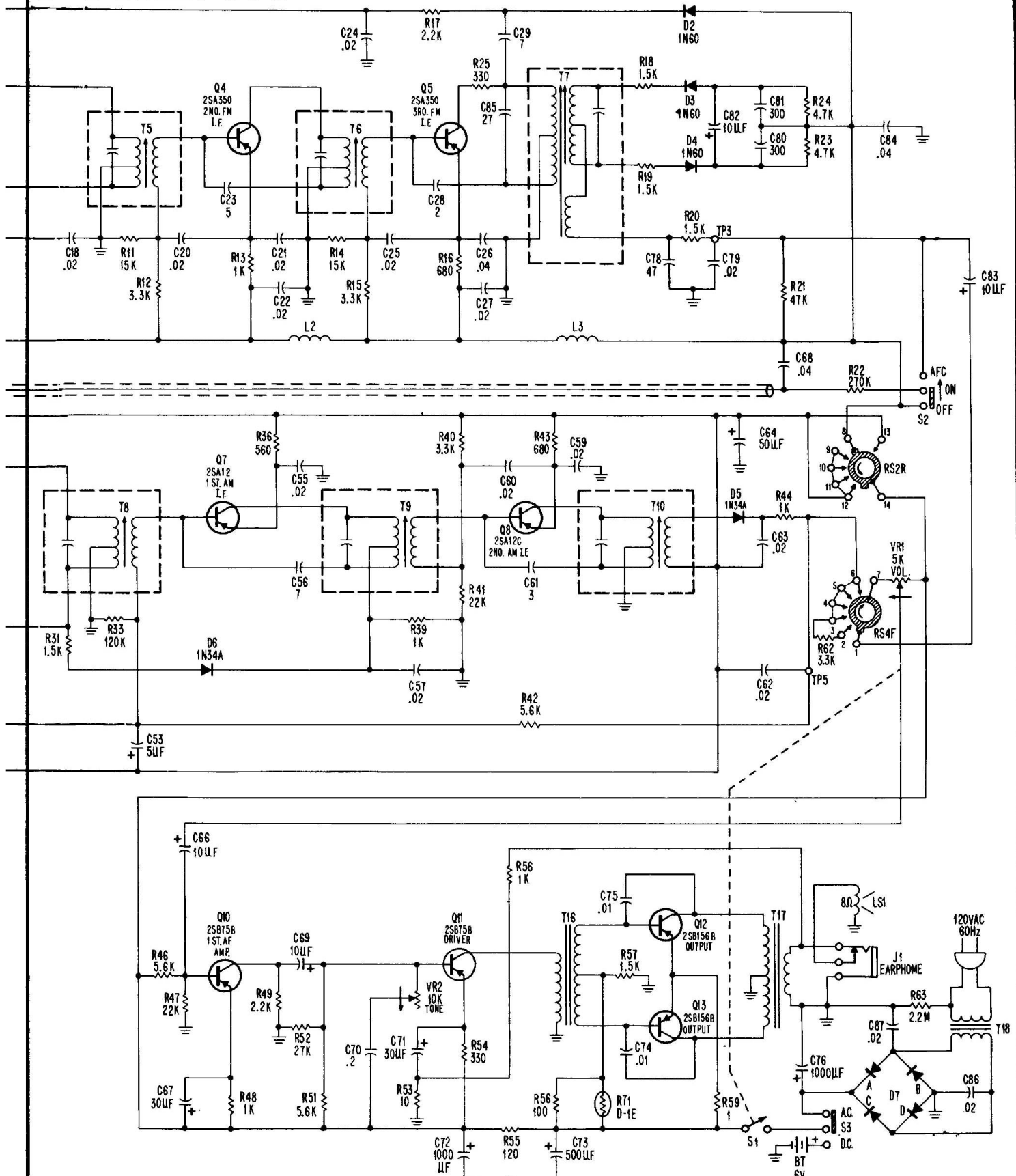


FREQUENCY COVERAGE: FM-88MHz to 108MHz
AM-540KHz to 1620KHz
LW-150KHz to 350KHz
SW1-1.5MHz to 4.5MHz
SW2-3MHz to 9MHz
SW3-9MHz to 22MHz

INTERMEDIATE FREQUENCY: AM - 455KHz
FM - 10.7MHz

DISASSEMBLY INSTRUCTIONS

1. Remove 2 cross-recess screws from the rear of the cabinet and unsnap the battery compartment lid.
2. Carefully pull the line cord box out of the unit. Also remove the battery case.



- Remove 1 cross-recess screw from the chassis next to the power transformer and 1 cross-recess screw from the front of the tuner mounting bracket.
- Remove 3 nuts, 2 on the left hand side of the chassis and 1 between the rotary switch bracket and the P.W. Panel.
- Loosen the screw on the AFC knob and pull the knob off.
- Remove J1 and S3 from the jack panel on the right-hand side. Do not remove the panel itself.
- Lift the chassis on the right side slightly and pull to the right to clear the rotary switch shaft from the side of cabinet. Lift the chassis straight up to clear cabinet.

FREQUENCY COVERAGE: FM-88MHz to 108MHz
AM-540KHz to 1620KHz
LW-150KHz to 350KHz
SW1-1.5MHz to 4.5MHz
SW2-3MHz to 9MHz
SW3-9MHz to 22MHz

INTERMEDIATE FREQUENCY: AM - 455KHz
FM - 10.7MHz

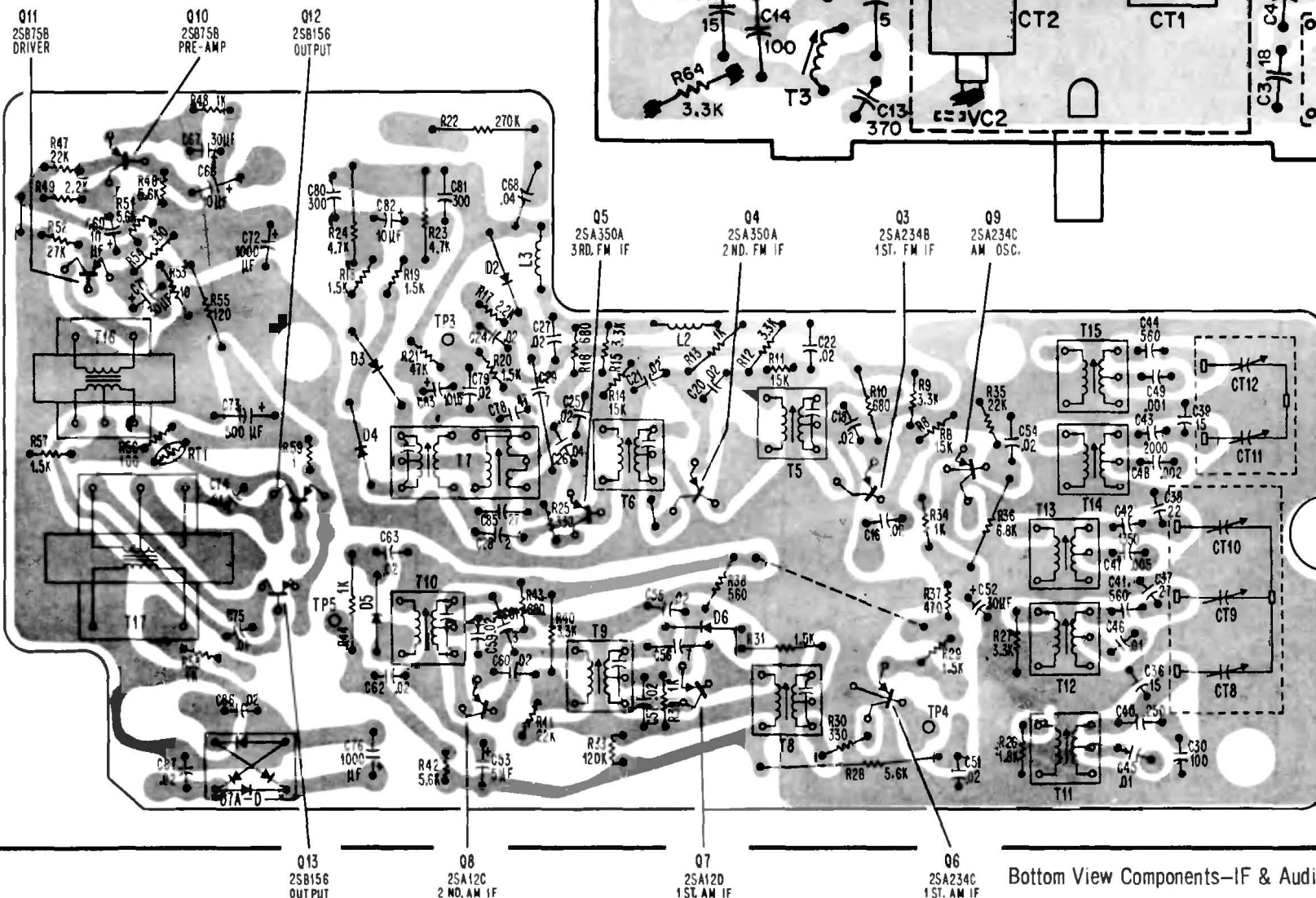
Bottom View Components—FM Tuner

This diagram shows the bottom view of the FM tuner circuit. It includes various components such as transistors (T1, T2, T3, T4), diodes (D1, D8), resistors (R1, R2, R3, R4, R5, R6, R7, R64, R65), capacitors (C1, C2, C3, C4, C5, C6, C7, C8, C9, C10, C11, C12, C13, C14), and integrated circuits (VC1, VC2, VC3, VC4). The components are interconnected by a network of conductive traces. Specific components are labeled with their values: R1 (680), R2 (5.6K), R3 (33K), R4 (150), R5 (150), R6 (3.3K), R7 (68K), R64 (3.3K), R65 (5.6K), C1 (0.002), C2 (0.002), C3 (18), C4 (0.002), C5 (0.002), C6 (127), C7 (3), C8 (300), C9 (100), C10 (0.002), C11 (15), C12 (5), C13 (370), and C14 (100). The components are arranged in a compact layout, with some components (T1, T2, T3, T4) mounted on separate heat sinks. The diagram is labeled with component values and part numbers, and includes a scale bar at the bottom.

PHILCO
MODEL ST989BK

(Continued from preceding two pages.)

Bottom View Components—SW Ant. Panel



Bottom View Components—IF & Audio Panel

