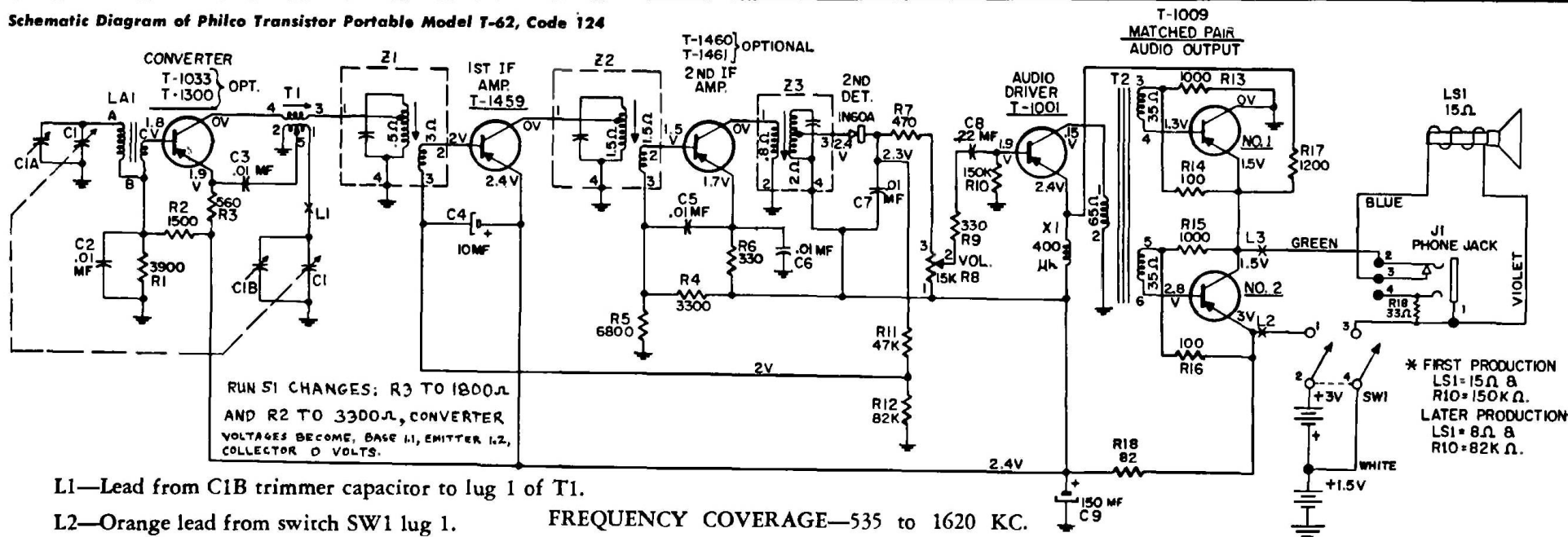


Schematic Diagram of Philco Transistor Portable Model T-62, Code 124



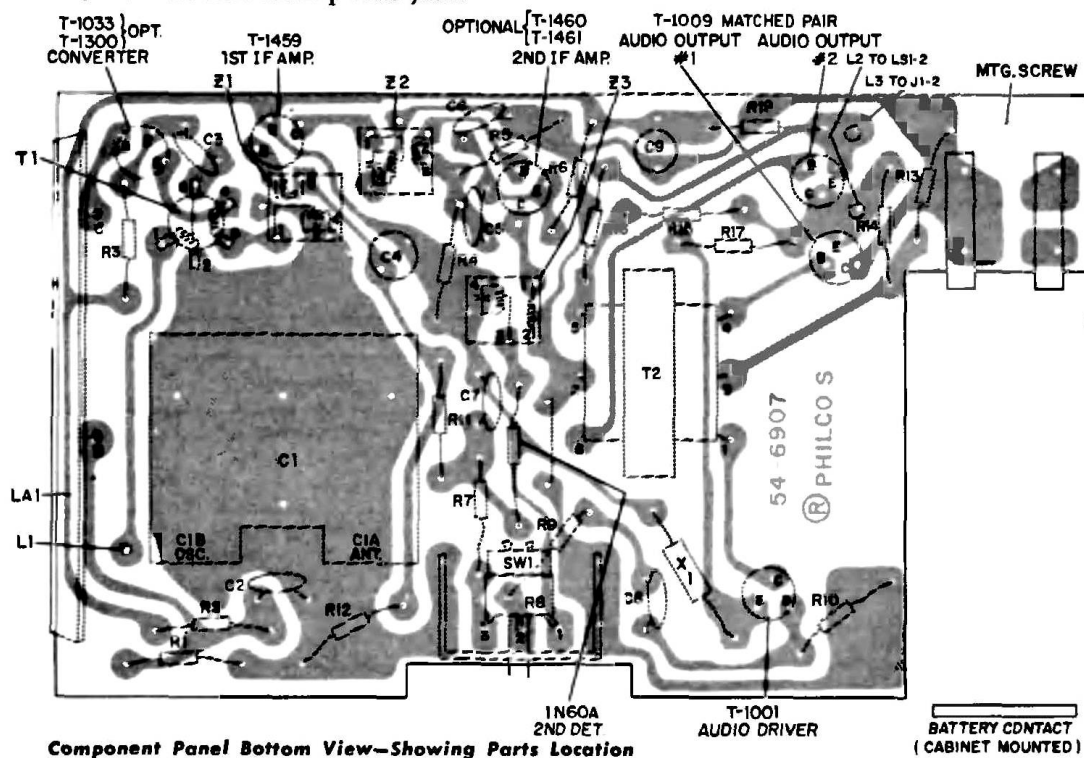
L1—Lead from C1B trimmer capacitor to lug 1 of T1.

L2—Orange lead from switch SW1 lug 1.

L3—Green lead from phone jack.

FREQUENCY COVERAGE—535 to 1620 KC.

INTERMEDIATE FREQUENCY—455 KC.

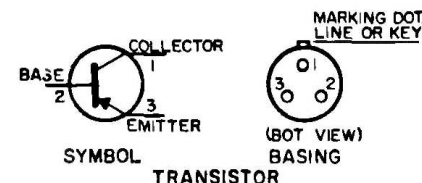
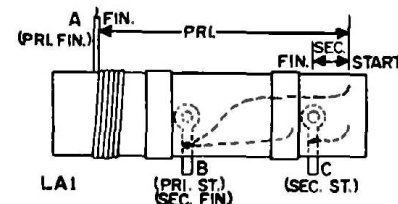


Component Panel Bottom View—Showing Parts Location

SERVICE NOTES

When signal tracing, inject signal at transistor collector and limit input to keep signal across speaker below .6 volt.

Normally, the transistors should be the last item suspected. If C9 opens serious audio oscillation will result.



PRINTED-WIRE PANEL REMOVAL

1. Remove the snap-on back of the cabinet and the batteries.
2. Remove the tri-mount fastener next to the battery clips.
3. Carefully spread the sides of the cabinet to free the panel from each of the 4 slotted cabinet supports.
4. Withdraw the panel assembly by sliding it toward the speaker end of the cabinet to free the tuning knob.

PHILCO PORTABLE RADIO TRANSISTOR MODEL T-62, CODE 124