

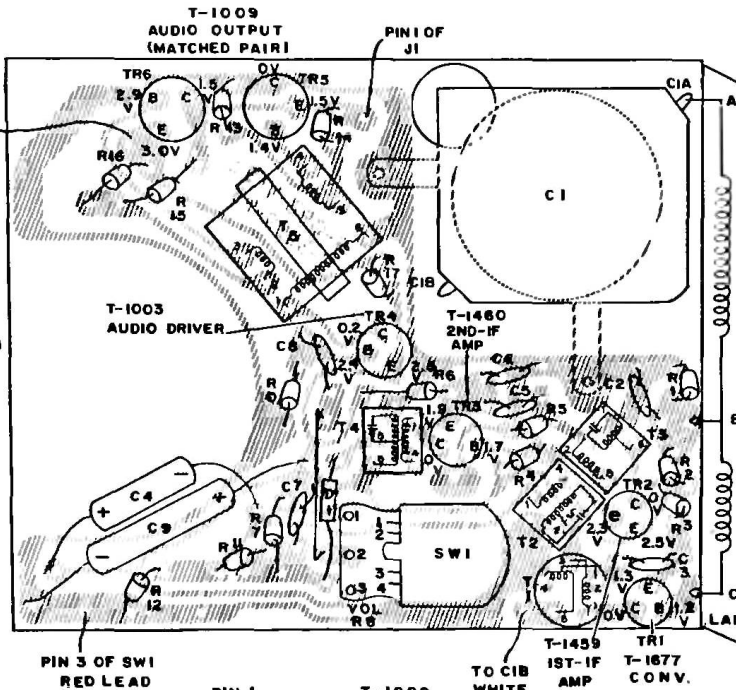
PHILCO

# MODEL T-61, CODE 124

NOTE:  
PIN 2 OF SWI  
TO POS. TERM.  
YEL. LEAD

PIN 4 OF SWI  
TO NEG. TERM.  
RED LEAD

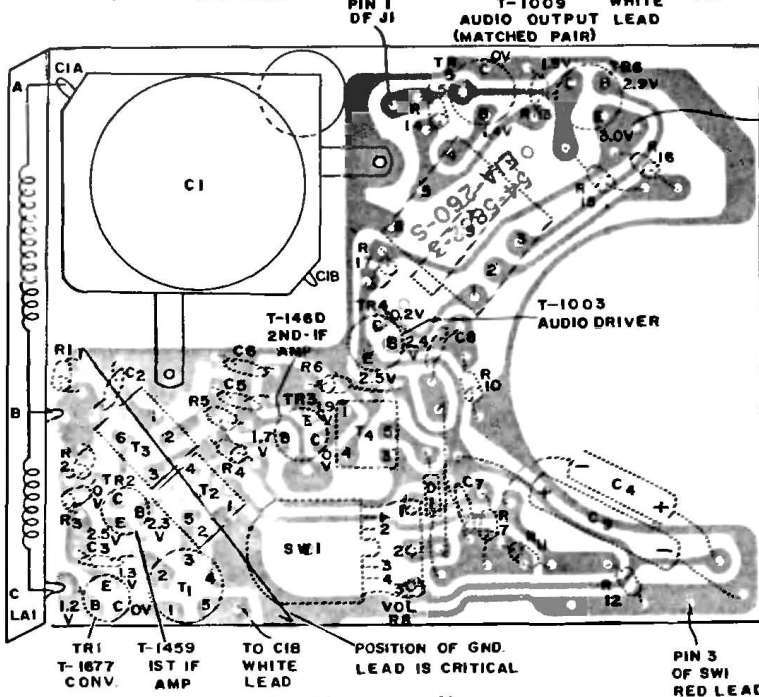
Composite Top View



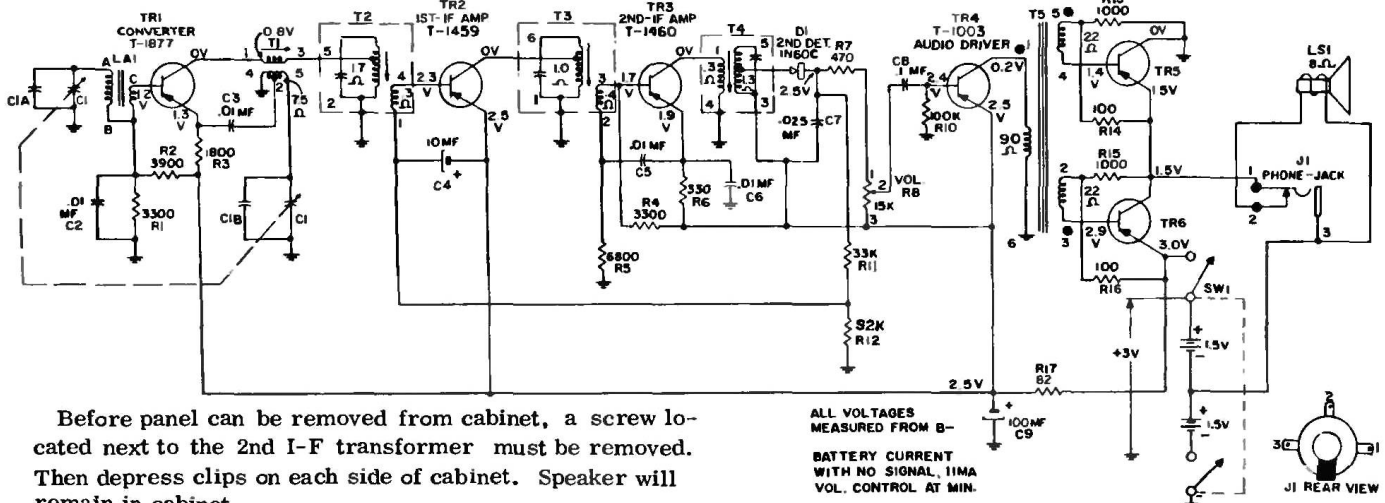
ALIGNMENT CHART

STEP	SIGNAL GENERATOR CONNECTION TO RADIO	DIAL SETTING	DIAL SETTING	RADIO	
				SPECIAL INSTRUCTIONS	ADJUST
1	Connect signal generator through a .1-uf. condenser to ant. section of gang.	455 kc.	Tuning gang fully open.	Adjust for maximum output in order given.	T4—3rd I-F T3—2nd I-F T2—1st I-F
2	Use radiating loop. (See NOTE 1 below)	600 kc.	600 kc.	Adjust for maximum output. Rock tuning gang while making this adjustment.	T1—Osc. core
3	Same as step 2.	1620 kc.	1620 kc. (Tuning gang fully open)	Adjust for maximum output.	C1B—Osc. trimmer
4	Same as step 2.	1400 kc.	1400 kc.	Adjust for maximum output.	C1A—antenna trimmer
5	Repeat steps 2, 3 and 4 until no further improvement is obtained. Always stop on step 4.				

NOTE 1. Use a 6-to-8-turn, 6-inch-diameter loop made up of insulated wire. Connect to generator terminals, and place about one foot from radio loop.



Composite Bottom View



Before panel can be removed from cabinet, a screw located next to the 2nd I-F transformer must be removed. Then depress clips on each side of cabinet. Speaker will remain in cabinet.

ALL VOLTAGES  
MEASURED FROM B-  
BATTERY CURRENT  
WITH NO SIGNAL, 11MA  
VOL. CONTROL AT MIN.

