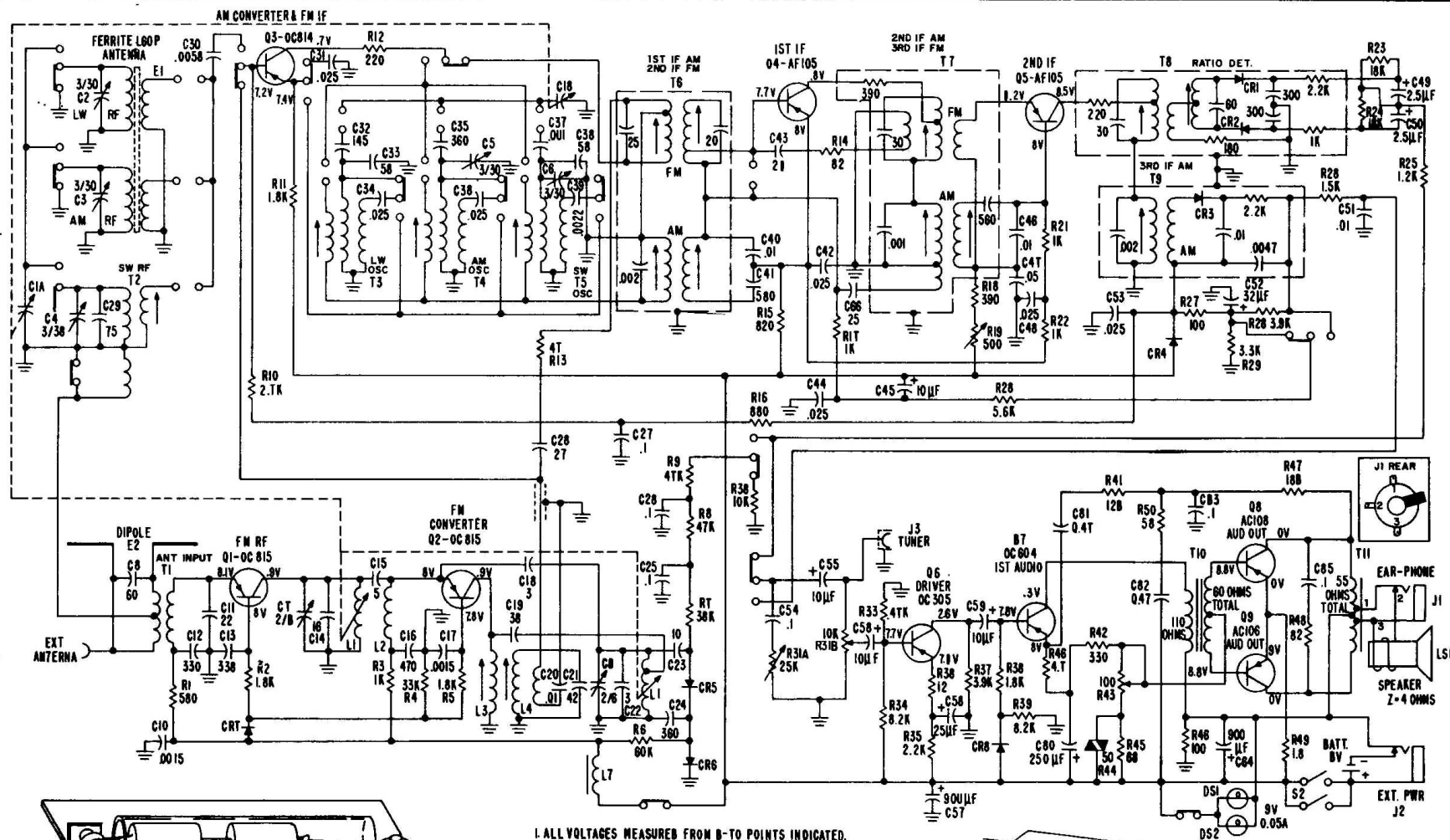
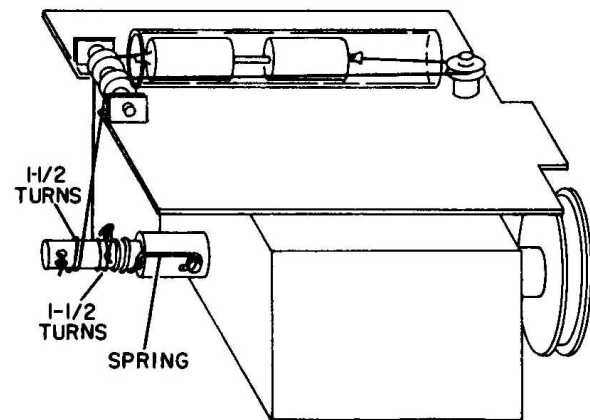


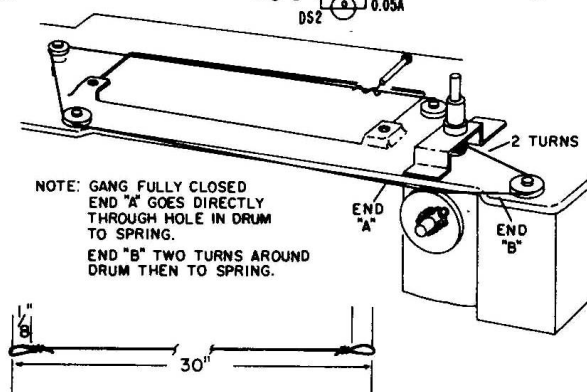
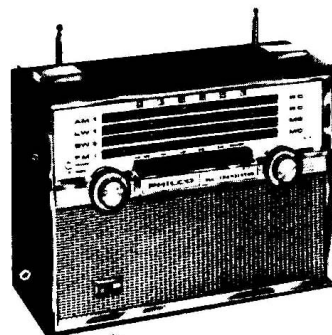
PHILCO



1. ALL VOLTAGES MEASURED FROM B-TO POINTS INDICATED.
2. VOLTAGES TAKEN UNDER 60 SIGNAL CONDITIONS WITH VTM PRECISION MODEL "B" EXCEPT Q1, Q2 & Q3
3. VOLTAGES READ Q4 Q3 TAKEN IN "A" POSITION
4. VOLTAGES READ Q1 Q2 TAKEN IN "M" POSITION



FM Tuner Dial Cord



NOTE: GANG FULLY CLOSED
END "A" GOES DIRECTLY
THROUGH HOLE IN DRUM
TO SPRING.
END "B" TWO TURNS AROUND
DRUM THEN TO SPRING.

Dial Cord Stringing

PHILCO Model T-911 Service Data, Continued from preceding page