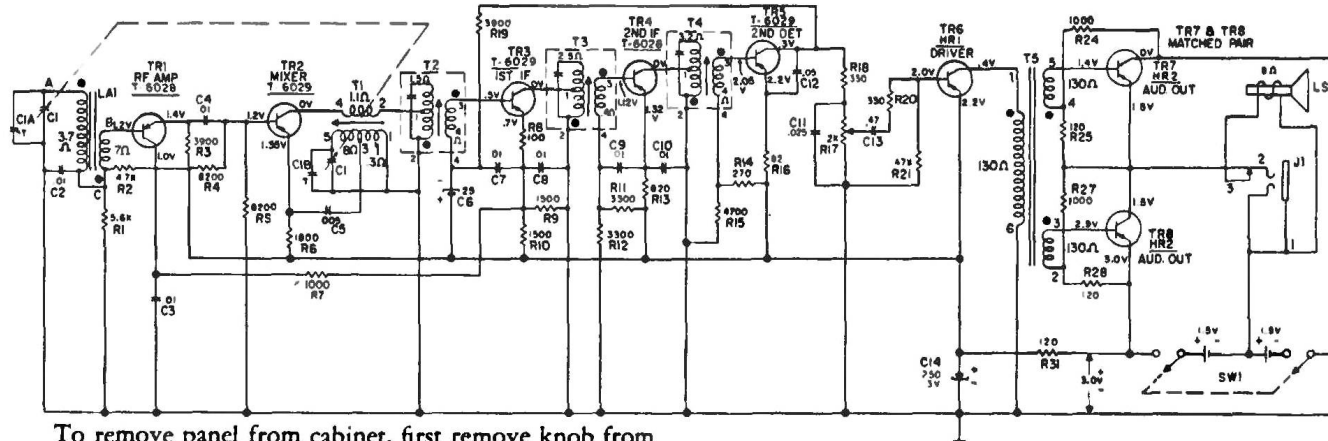
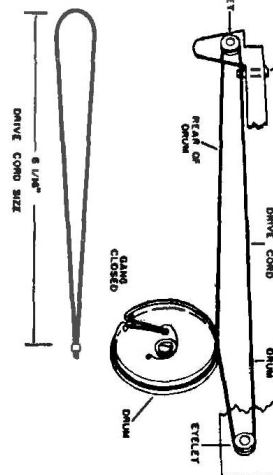


# PHILCO

TRANSISTOR PORTABLE  
MODEL T-89



DIAL CORD ARRANGEMENT



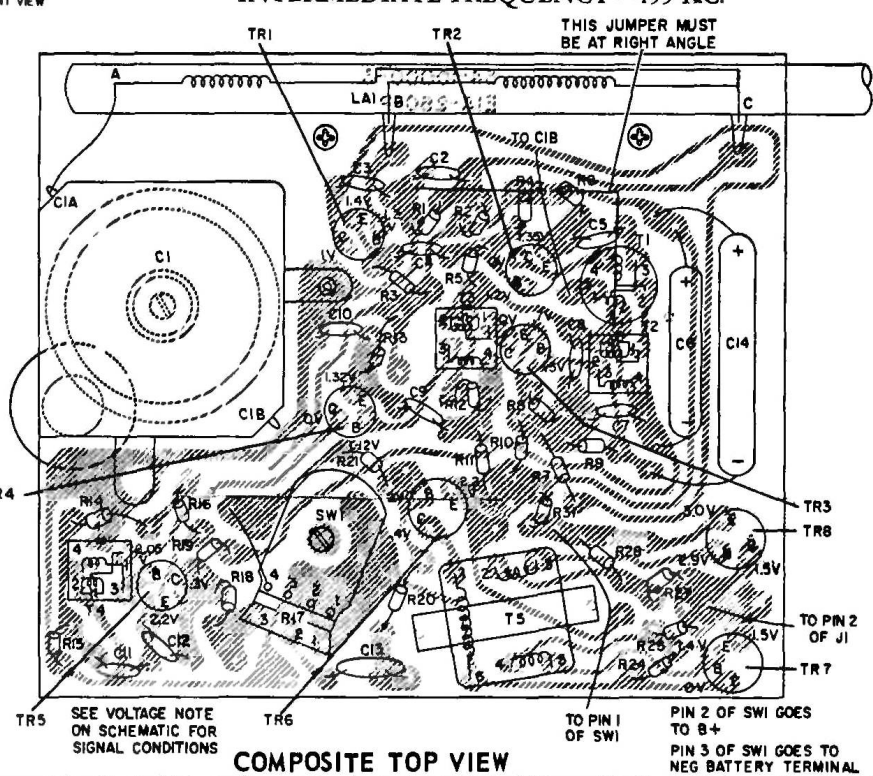
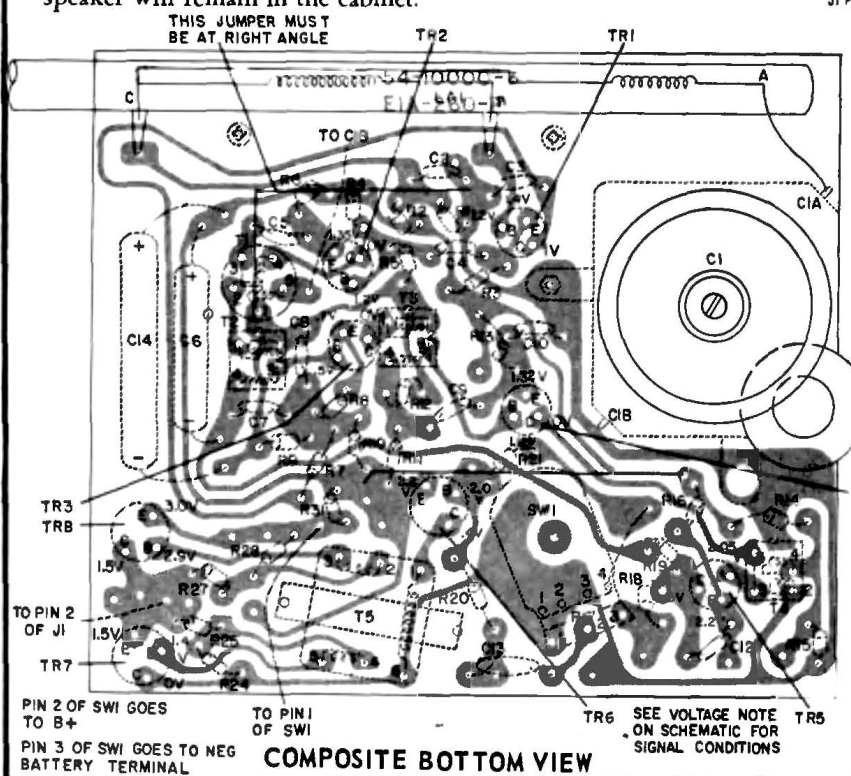
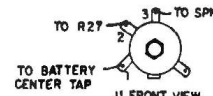
To remove panel from cabinet, first remove knob from front of cabinet. Next remove the screw mounted through the flange of the tuning gang (C1) (graph location D3) which holds the panel to the front of the cabinet. Depress the bottom of the cabinet so that the panel clears the teeth at bottom of cabinet. Lift panel up and out. The speaker will remain in the cabinet.

NOTE ALL RESISTOR VALUES EXPRESSED IN OHMS AND ALL CAPACITOR VALUES EXPRESSED IN MICROFARADS UNLESS OTHERWISE NOTED.

Model T-89, Code 124

WITH NO SIGNAL, VOL. CONTROL AT MINIMUM, CURRENT 11 MA  
VOLTAGES READ UNDER NO SIGNAL CONDITIONS, VOLUME CONTROL AT MINIMUM, WITH A VTVM PHILCO MODEL 7001

INTERMEDIATE FREQUENCY—455 KC.



COMPOSITE BOTTOM VIEW

COMPOSITE TOP VIEW