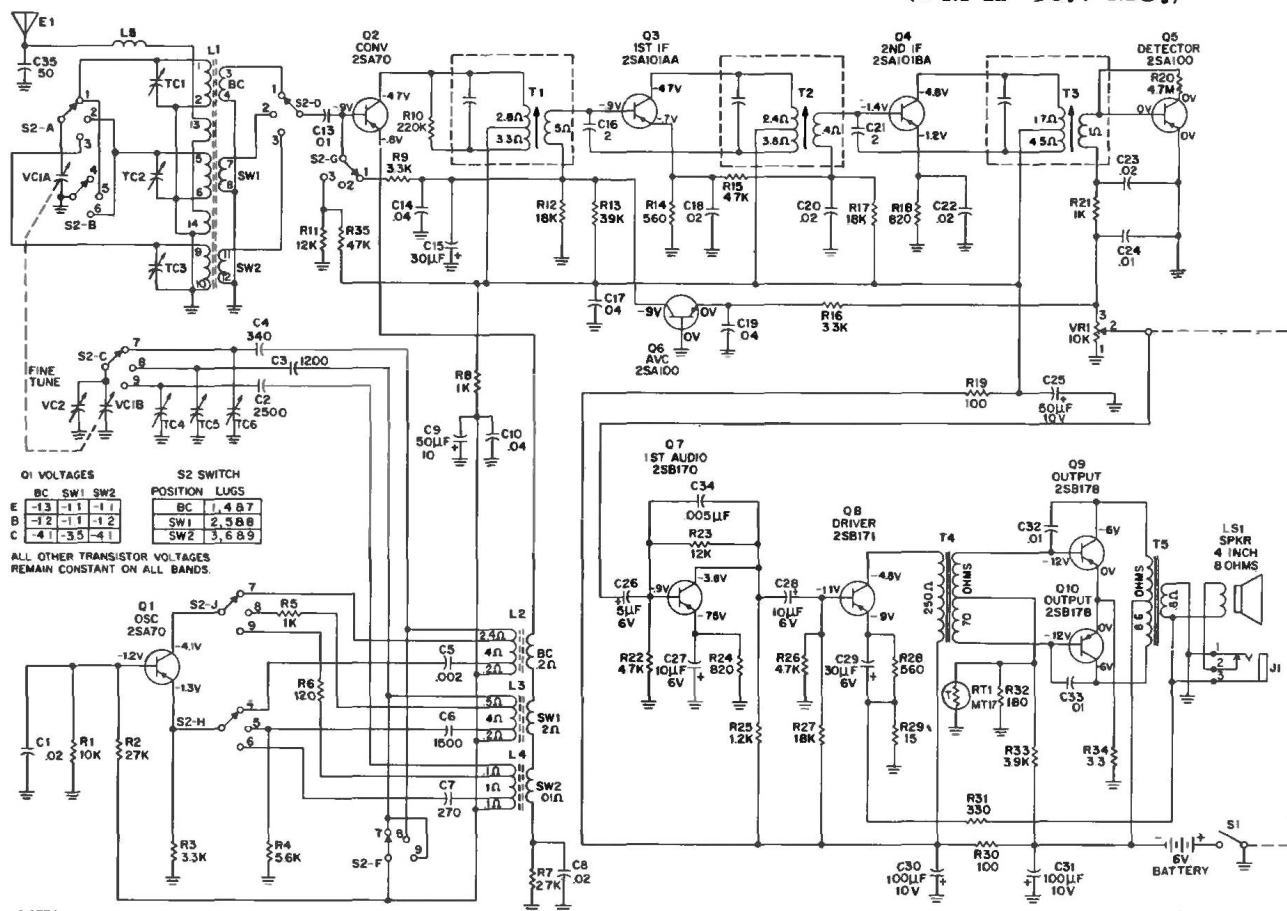


VOLUME R-26, MOST-OFTEN-NEEDED 1966 RADIO SERVICING INFORMATION

PHILCO Model NT815

(AM IF 455 KC.)
(FM IF 10.7 MC.)



Q1 VOLTAGES

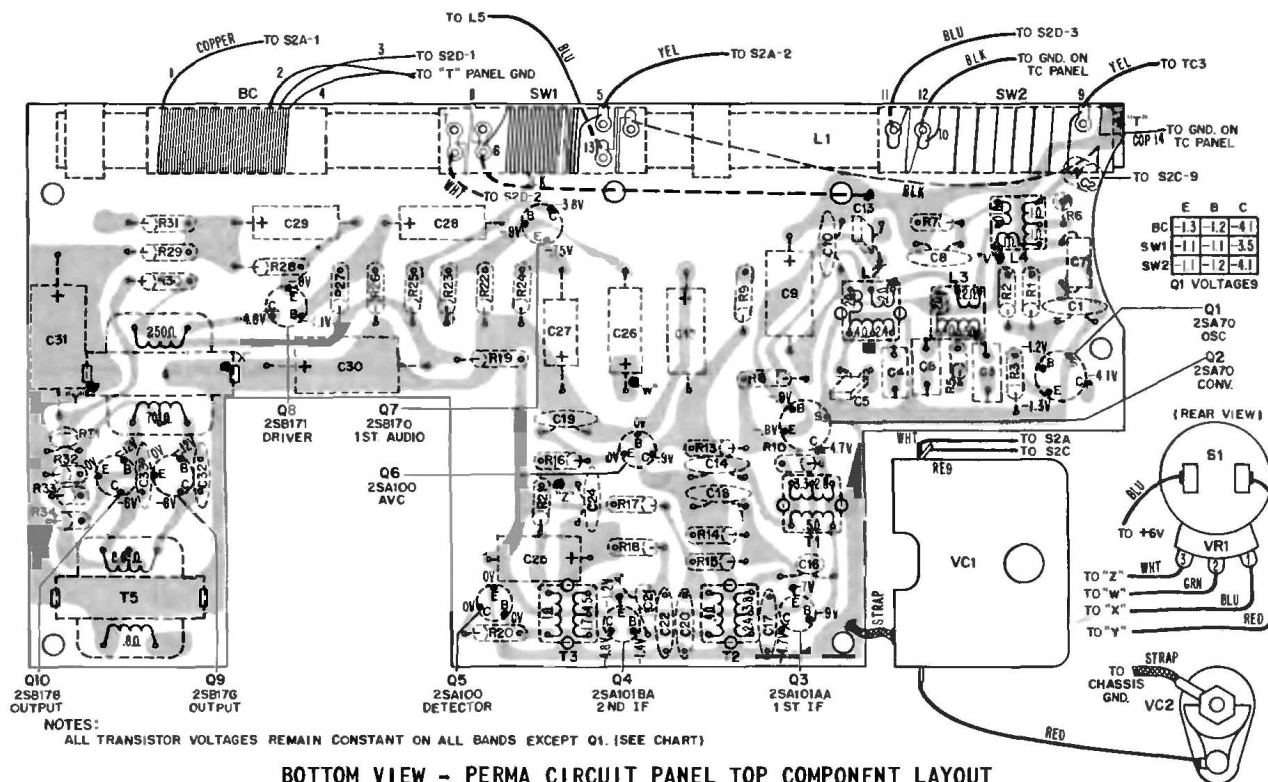
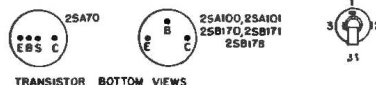
BC	SW1	SW2
-13	-11	-11
-12	-11	-12
-4	-3.5	-4

S2 SWITCH POSITION LUGS

BC	1	4	8	7
SW1	2	5	8	8
SW2	3	6	8	9

ALL OTHER TRANSISTOR VOLTAGES REMAIN CONSTANT ON ALL BANDS.

NOTES
ALL VOLTAGES MEASURED WITH "PRECISION MODEL 88" VTVM FROM GROUND TO POINTS INDICATED WITH VOLUME AT MINIMUM AND NO SIGNAL. BATTERY SUPPLY 6 VOLTS-CURRENT 8.5 MA BAND SWITCH IN BC POSITION
ALL RESISTANCES MEASURED IN CIRCUIT



NOTES:
ALL TRANSISTOR VOLTAGES REMAIN CONSTANT ON ALL BANDS EXCEPT Q1. (SEE CHART)

BOTTOM VIEW - PERMA CIRCUIT PANEL TOP COMPONENT LAYOUT