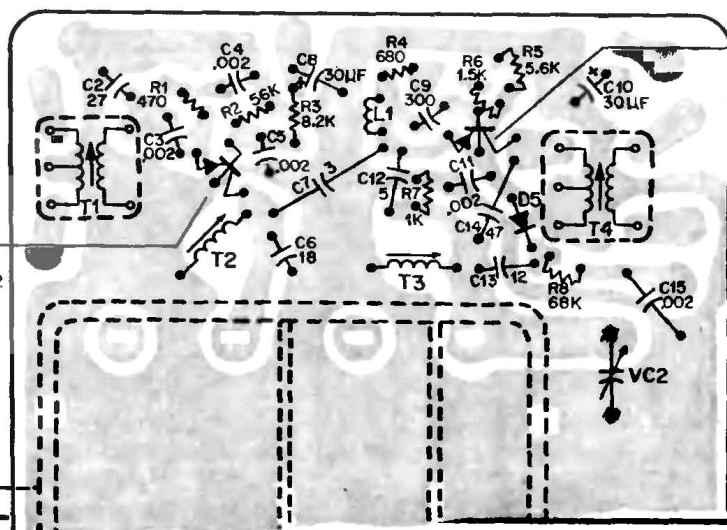
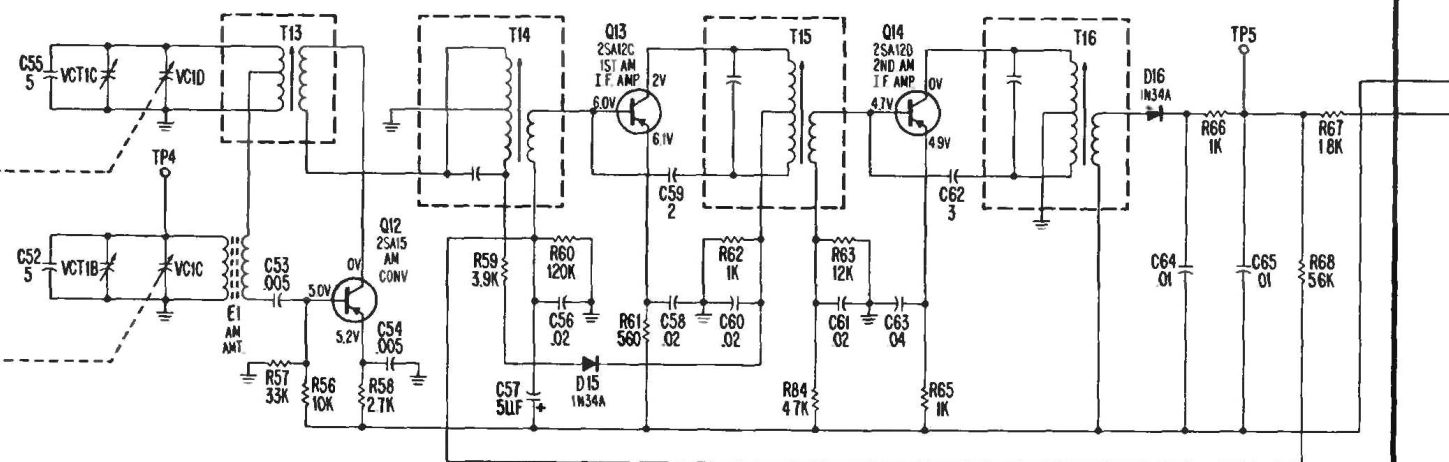
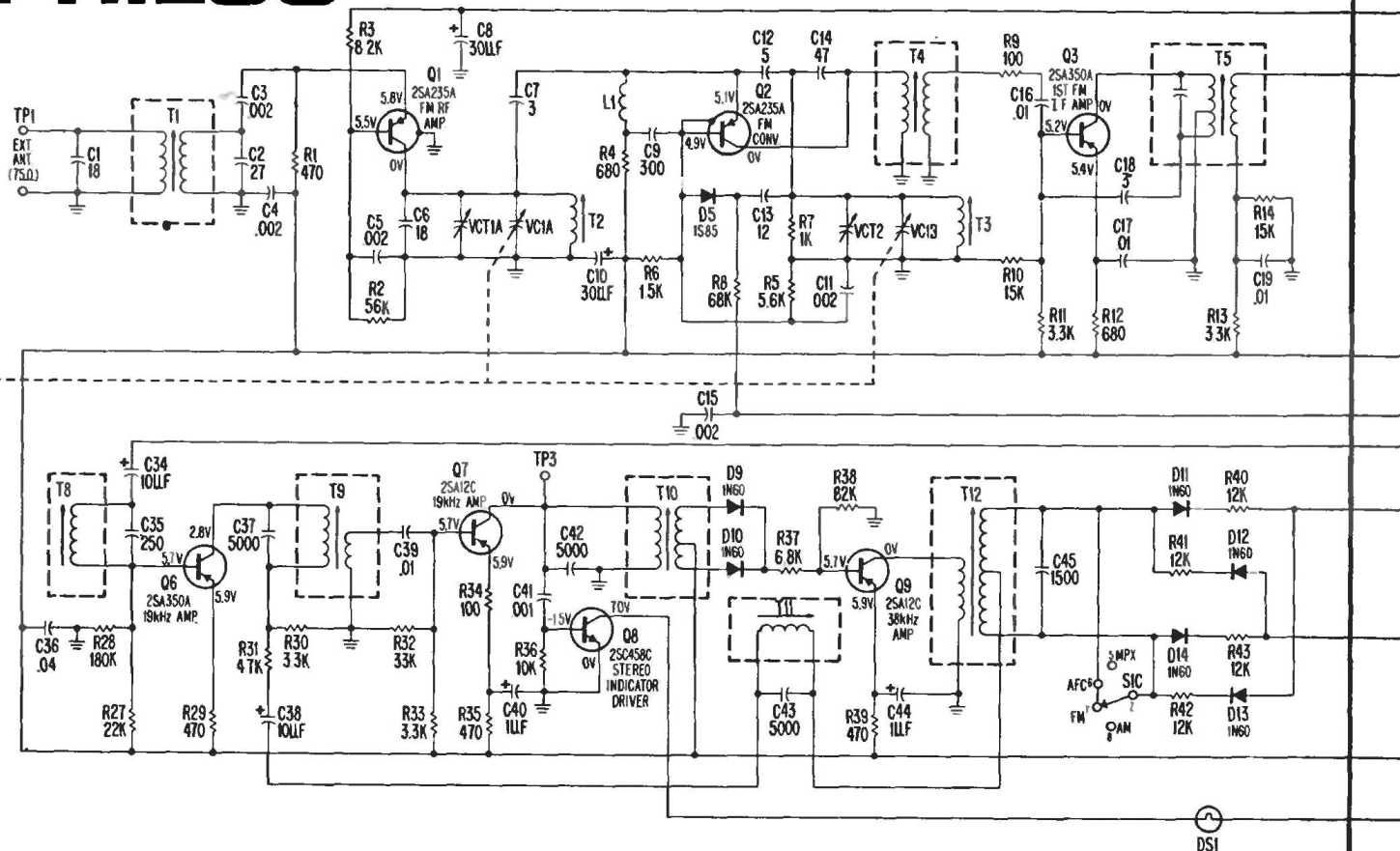
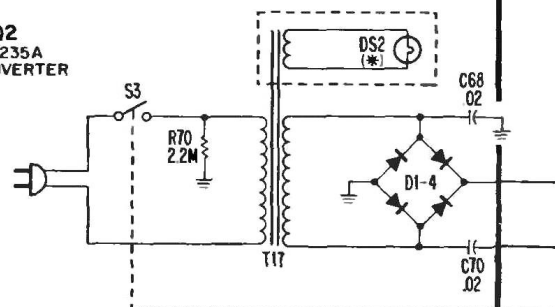


PHILCO MODELS ST958 & ST959 (Continued on next two pages.)



Q2
2SA235A
FM CONVERTER



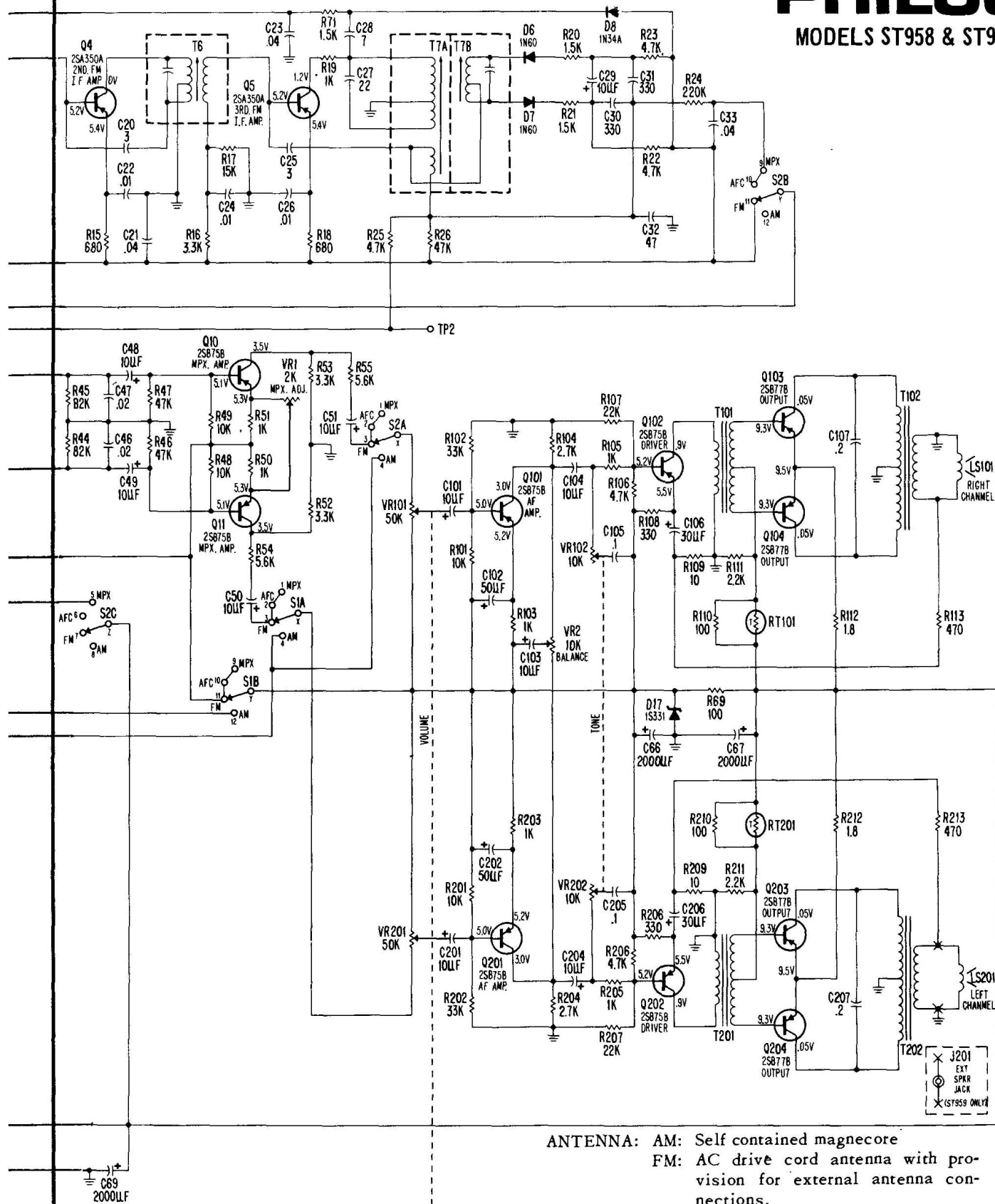
NOTES:

- ALL MEASUREMENTS TAKEN IN FM STEREO POSITION EXCEPT Q12, Q13, Q14 TAKEN IN AM POSITION
- Q8 VOLTAGE TAKEN WITH FM STEREO SIGNAL APPLIED
- (*) S959 ONLY.

(Continued on next page and from preceding page.)

PHILCO

MODELS ST958 & ST959



ANTENNA: AM: Self contained magnecore
FM: AC drive cord antenna with provision for external antenna connections.

CIRCUIT: 22 transistors, 13 diodes and 2 thermistors in a superheterodyne FM-AM receiver.

FREQUENCY COVERAGE: FM-88MHz to 108MHz
AM-540MHz to 1620MHz
LW-150KHz to 350KHz

INTERMEDIATE FREQUENCY: AM - 455KHz
FM - 10.7MHz

SPEAKERS:

ST958: Two 4" round, 8 ohms, contained in cabinet.

ST959: Two 4 x 6, 8 ohms, one in cabinet, one extension speaker

POWER: 120 volts alternating current (AC) only.

Q3
2SA350A

Q4
2SA350A

92

PHILCO Models ST958 & ST959 (Continued from preceding two pages.)

Bottom View-Multiplex Panel-ST958 and ST959

TRANSISTOR BASINGS
BOTTOM VIEWS
Q1, Q2
ALL OTHERS

Q12
2SA15
AM MIXER

Q9
2SA12C
38 KHz
AMP.

Q13
2SA12C
1ST. AM
I.F. AMP.

Q5
2SA350A
3RD. FM I.F.
AMP.

Q7
2SA12C
19 KHz
AMP.

Q14
2SA12D
2ND. AM
I.F. AMP.

Q6
2SA350A
19 KHz
AMP.

Q8
2SC458C
STEREO
INDICATOR
DRIVER

Q11
2SB75B
MPX AMP.
(LEFT
CHANNEL)

Bottom View-IF Panel-ST958 and ST959

