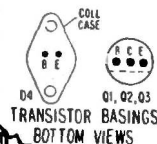
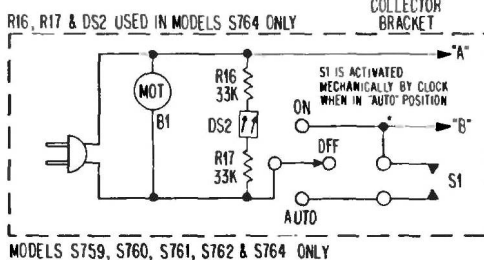
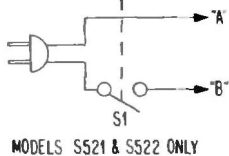
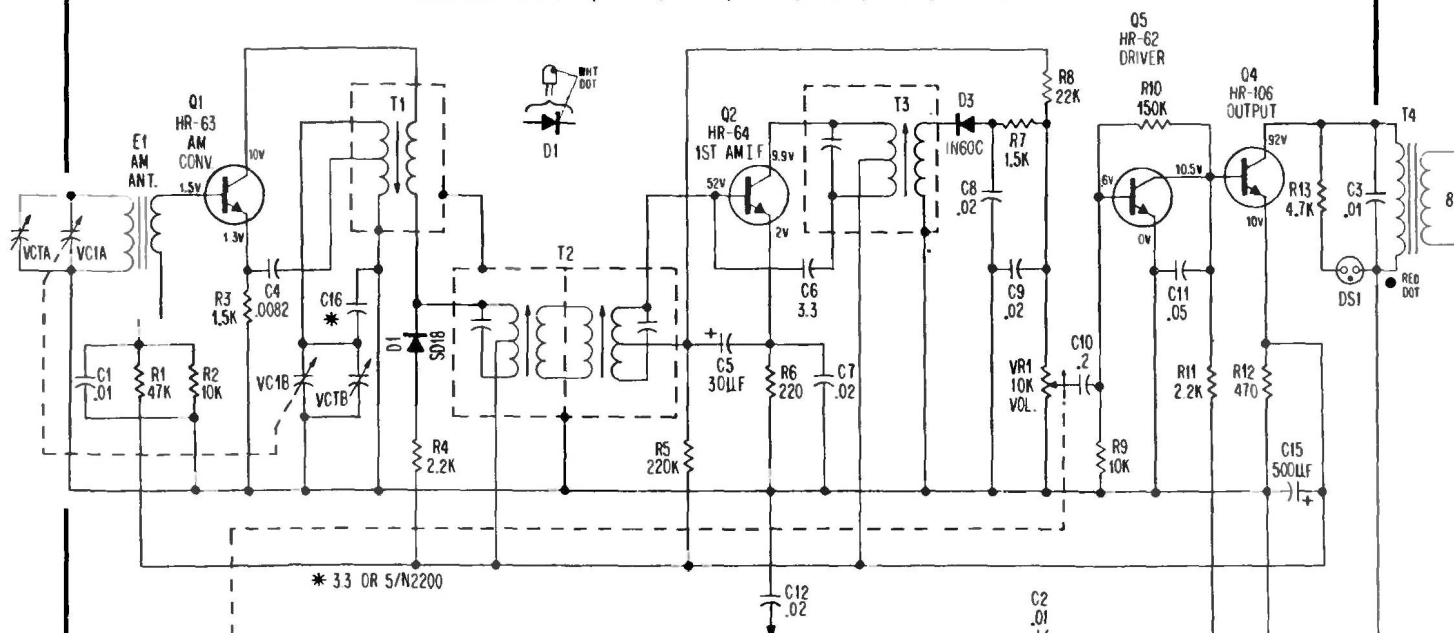
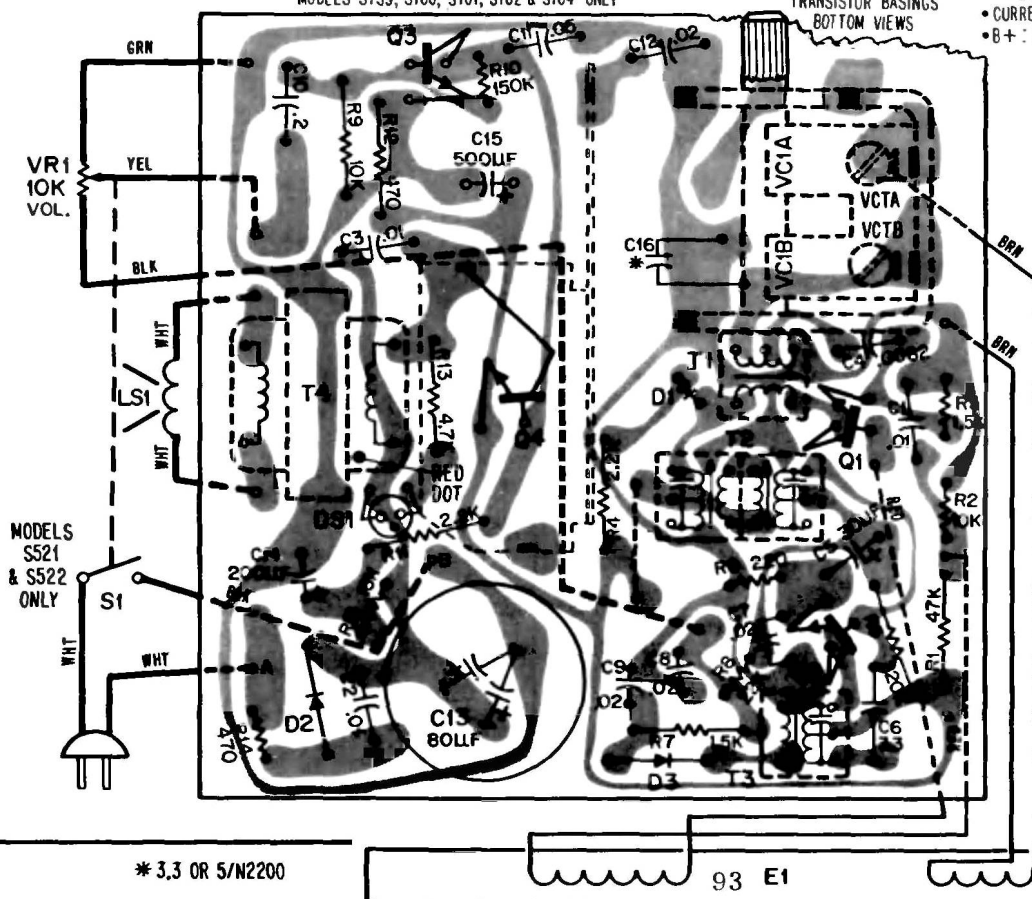


PHILCO

CLOCK/TABLE AM TRANSISTOR RADIO MODELS S521, S522, S759, S760, S761, S762, & S764



- NOTES:
- ALL VOLTAGES MEASURED WITH B & K MODEL 175 VTVM, VOLUME AT MINIMUM & NO SIGNAL APPLIED.
 - CURRENT DRAIN: 29 MA
 - B+ : 102V



CIRCUIT: Four transistor superheterodyne.
FREQUENCY COVERAGE: 535 KC to 1605 KC
INTERMEDIATE FREQUENCY: 455 KC
ANTENNA: Self contained magnecore.
POWER OUTPUT: 1.4 watts max.
SPEAKER: 4 inches, 8 ohms
POWER: 120 Volts alternating current (AC) only.