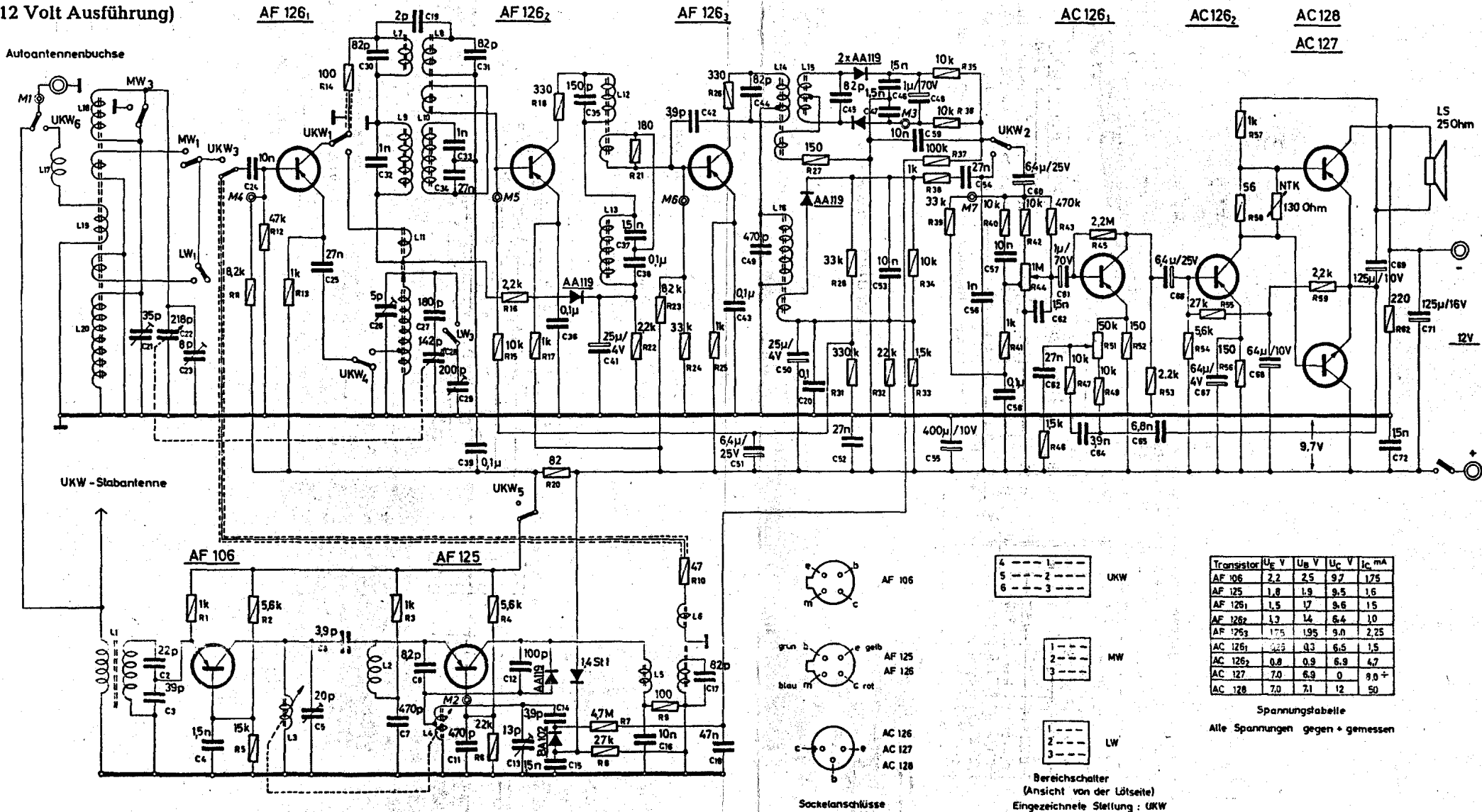


Minerva "Perfect 652"

(12 Volt Ausführung)



Transistor	U _E V	U _B V	U _C V	I _C mA
AF 106	2.2	2.5	9.7	175
AF 125	1.8	1.9	9.5	1.6
AF 126 ₁	1.5	1.7	9.6	1.5
AF 126 ₂	1.3	1.4	6.4	1.0
AF 126 ₃	1.75	1.95	9.0	2.25
AC 126 ₁	2.25	0.3	6.5	1.5
AC 126 ₂	0.8	0.9	6.9	4.7
AC 127	7.0	6.9	0	9.0 +
AC 128	7.0	7.1	12	50

Spannungstabelle
Alle Spannungen gegen + gemessen