

R.1 - 820 K  
R.2 - 680 ohms  
R.3 - 470 ohms  
R.4 - 180 ohms  
R.5 - 100 K  
R.6 - 470 ohms

R.7 - 39 K  
R.8 - 1,5 K  
R.9 - 220 ohms  
R.10 - 27 K  
R.11 - 470 ohms  
R.12 - 56 ohms

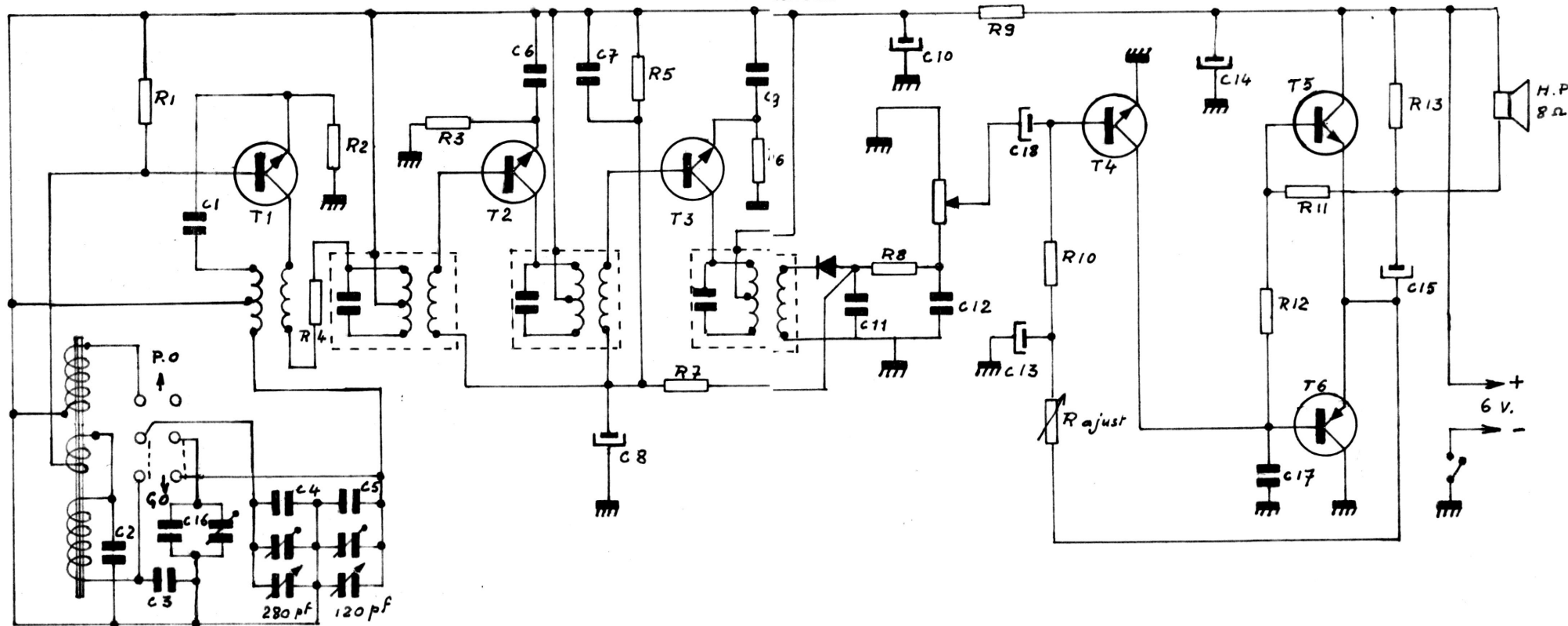
R.13 - 1 K  
R.ajustable - 470 K  
C.1 - 20 NF  
C.2 - 2,2 NF (bonne qua-  
lité "Mial")  
C.3 - 75 à 82 PF

C.4 - 12 PF  
C.5 - 12 PF  
C.6 - 47 NF  
C.7 - 22 NF  
C.8 - 2,2 MF  
C.9 - 47 NF

C.10 - 50 MF 6,3 v  
C.11 - 47 NF  
C.12 - 10 NF  
C.13 - 2,2 MF  
C.14 - 470 MF 6,3 v(vis  
C.15 - 220 MF 6,3 v(inv.

C.16 - 230 PF  
C.17 - 47 NF  
C.18 - 10 NF  
T.1/T.2/T.3 - MJA 117  
T.4 - BC 270  
T.5 - AC 140  
T.6 - AC.141

Diode AA.112 ou diode d'usage général



'BAMBA'