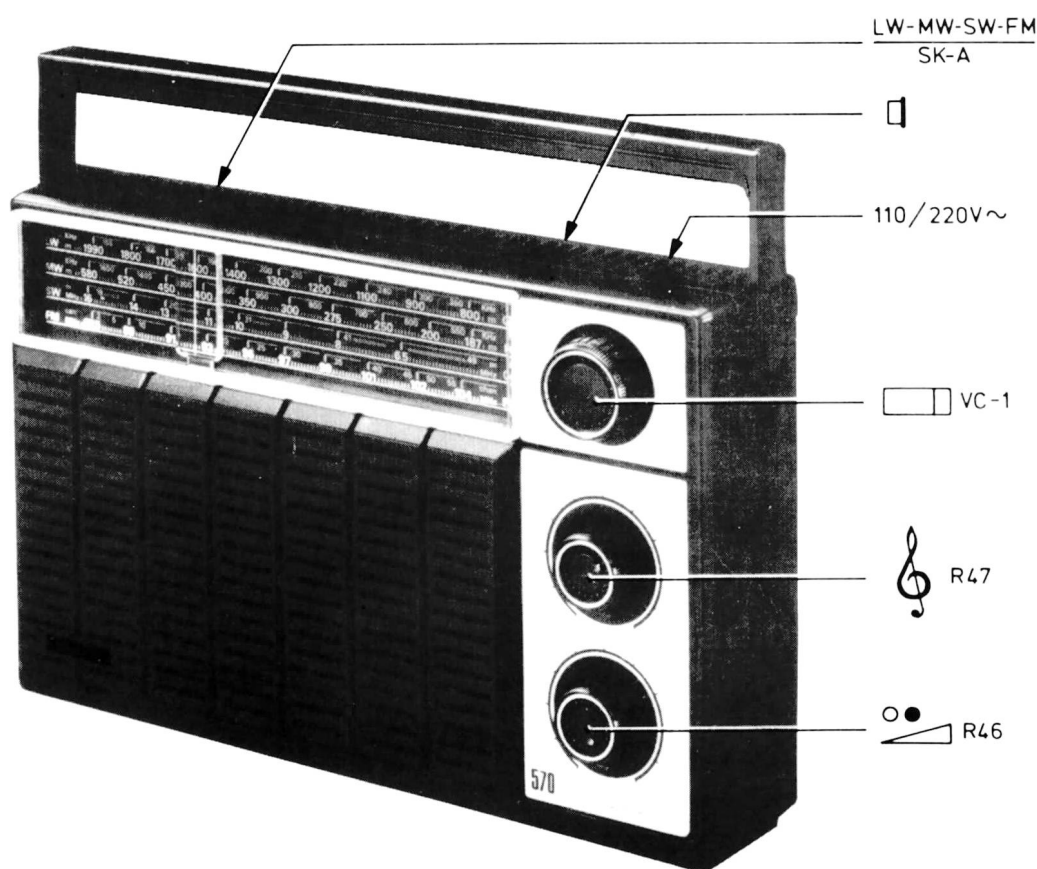


Service
Service
Service

Service Manual



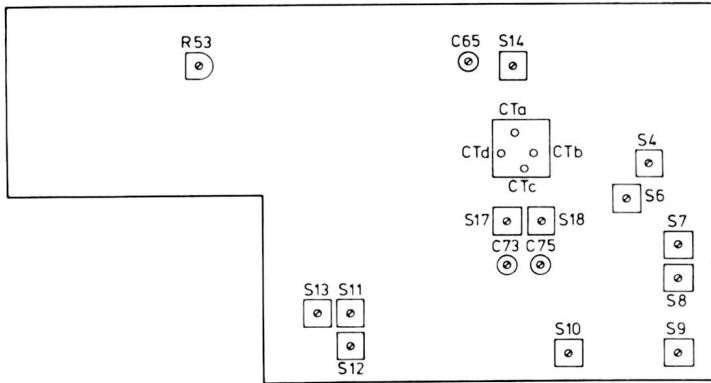
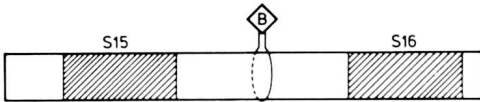
FM : 87.5 – 104 MHz
 SW : 5.95 – 15.45 MHz (50.4 – 19.4 m)
 MW : 520 – 1605 kHz (577 – 187 m)
 LW : 150 – 255 kHz (2000 – 1150 m)
 SUPPLY : 110/220V~
 : 4- : 6V (4xR14)

IF-AM : /00/28/40/51 452 kHz
 IF-AM : /15 470 kHz
 IF-FM : 10.7 MHz
 OUTPUT : 700 mW \pm 1 dB (d=10%) BATTERY
 : 1000 mW \pm 1 dB (d=10%) MAINS

12725B12

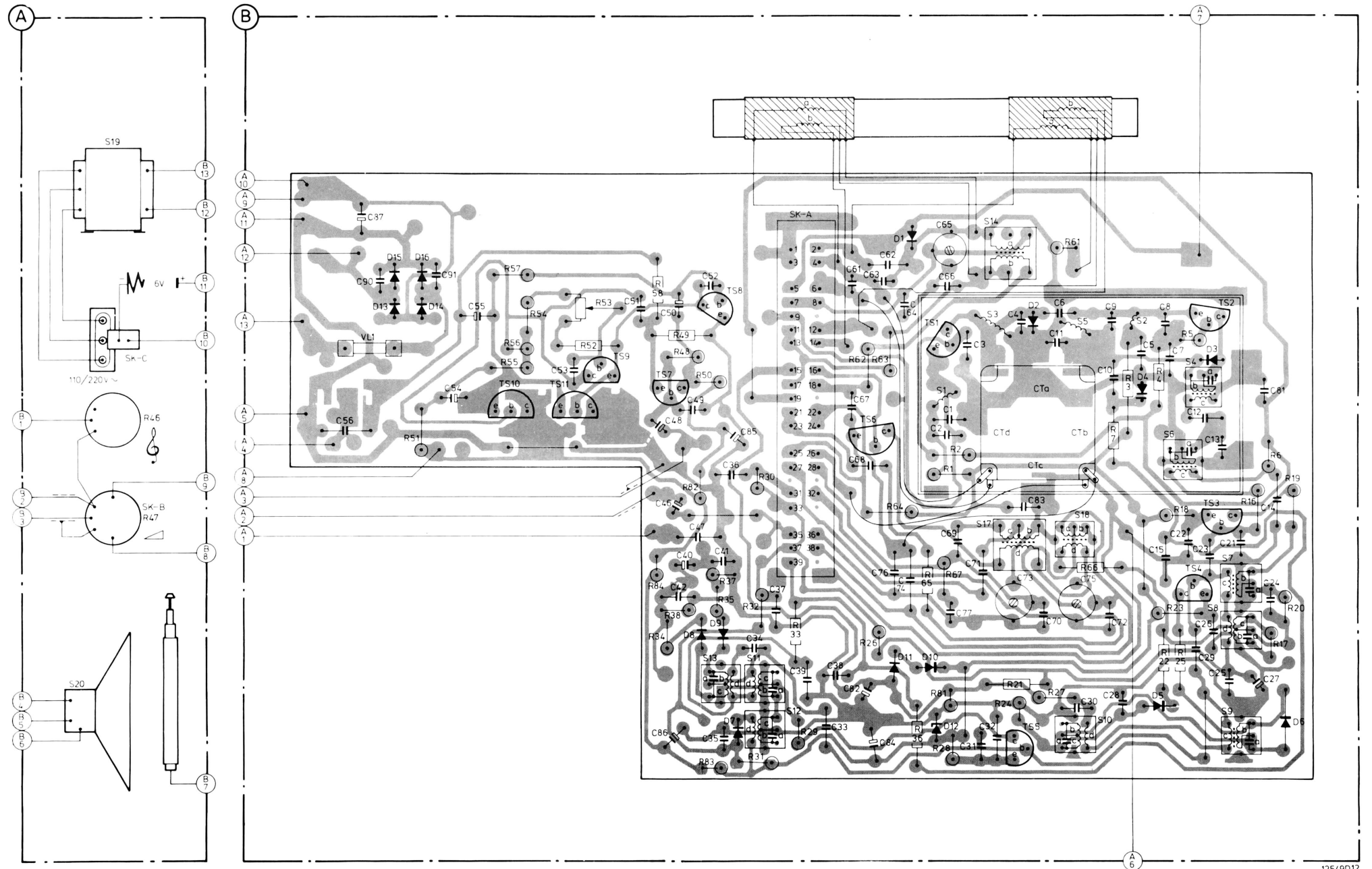
Wave range	Signal to		Var. cap.	Detune	Adjust	Indication	
SK-A							
MW (520-1605 kHz)	<div>1</div> via 22 nF	<div>A</div>	Min. cap.	S8,10,12	S12	<div>1</div> max.	
					S10		
					S8		
	512 kHz	<div>B</div>	Max. cap.		S18		
	1635 kHz		Min. cap.		CTc		
600 kHz	Tune in			S15			
1400 kHz				CTd			
LW (150-255 kHz)	147 kHz	<div>B</div>	Max. cap.		C75	<div>1</div> max.	
	200 kHz		Tune in		S16		
SW (5.95-15.45 MHz)	5.8 MHz	<div>C</div> via 6 pF	Max. cap.		S17	<div>1</div> max. <div>2</div>	
	15.9 MHz		Min. cap.				C73
	6.5 MHz		Tune in				S14
	14.5 MHz						C65
FM (87.5-104 MHz)	10.7 MHz via 22 nF	<div>D</div>	Min. cap.	S4,6,7 9,11	11	<div>2</div> <div>3</div>	
					9		
					7		
					6		
					4		
					S13	<div>1</div> <div>4</div>	
	87.5 MHz	<div>E</div> via 39 pF	Max. cap.		S5	<div>1</div> max.	
	104 MHz		Min. cap.				CTb
	88 MHz		Tune in				S3
	102 MHz						CTa
<div>↕</div> Repeat - Herhalen - Répéter - Wiederholen - Repetera - Ricominciare - Repetera - Gentage - Gjentagelse - Toista							

Repeat - Herhalen - Répéter - Wiederholen - Repetera - Ricominciare - Repetera - Gentage - Gjentagelse - Toista

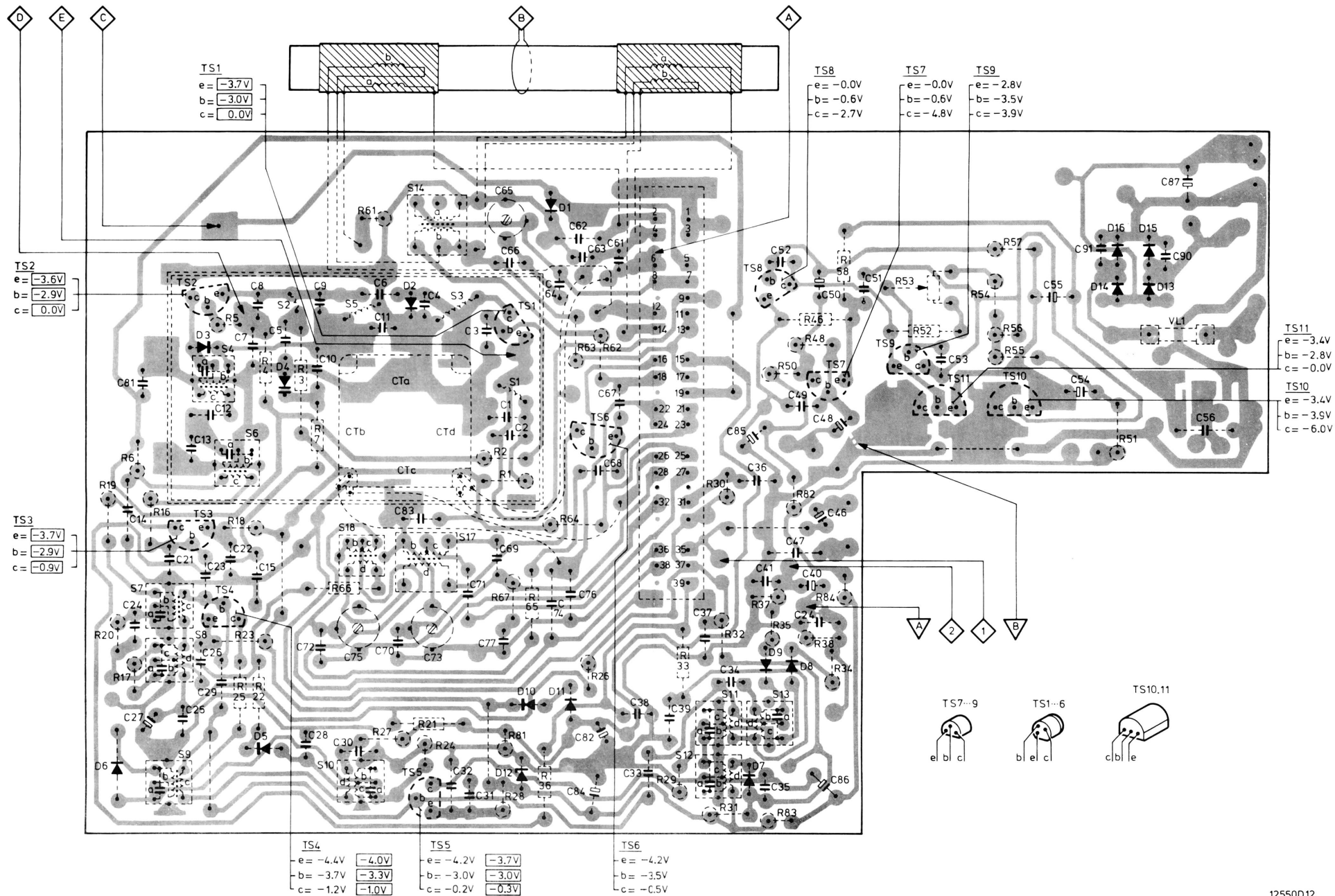


12728B12

MISC.	SK-C SK-B	VL1	D13-D16	TS10	TS11	TS9	TS7	D8 D9	TS8 D7 SK-A	TS6	D1 D11 D10 D12 TS1	TS5 D2	D4 D5	D3 TS2 TS3 TS4 D6	MISC.	
S	20 19							13 11 12 15			1 3 14 17	16 18 10 5	2	6 4 7 8 9	S	
C	1 50						50 48 46 49 40 47 42 41 35 36 34 37 39	38 33			1 2 3 31 32 4	CTabcd 6 11 30 9 10 28 5 15	8 7 22 12 13 23 29 24 27 14	1 50	C	
	51 100	56 87 90	54 55	53	51	86 52 85	61 67 68 82 84 74 65 62 63 77 64 66 69 71 73 83 75	70 72					81	51 100		
R	1 50	46 47					49 48 34 50 35 38 37	29 33			26 36	2 1 28 24 27 21	7 3 4 23 18 22 25 5	16 6 17 19 20	1 50	R
	51 100		51	54 57	53 52	58 84 82 83	62 63 64 65 67 81	61 66						51 100		



MISC.	D6	TS4	TS3	TS2	D3	D5	D4	D2				TS5	TS1	D12	D10	D11	D1	TS6	D7				TS8	D9	D8	TS7	TS9	TS11	TS10	D13--D16		VL1	MISC.																
S					9	8	7	4	6		2	5	10	18	16	17	14	3	1		15	12	11	13							S																		
C	1--50	14	24	27	29	23	13	12	22	7	8	15	5	28	10	9	30	11	6	CTabcd	4	32	31	3	2	1			33	38	39	37	34	36	35	41	42	47	40	49	46	48	50	1--50					
	51--100		81											72	75	70	83	73	69	66	64	71	63	65	62	77	84	82	74	76	68	67	61		85	52	86		51		53		55	54		91	90	87	56
R	1--50	20	19	17	6	16	5	25	22	18	23	4	3	7				21	27	24	28					1	2	36	26		29	33	37	38	34	35	50	48	46						1--50				
	51--100																	66	61									81	67	65	64	63	62					83	82	84	58		52	53		54	57		51



THE CIRCUIT HAS BEEN DRAWN IN POSITION LW
CE CIRCUIT A ETÉ DESSINÉ EN POSITION GO

—□— CARBON RESISTOR E24 SERIES
0.125W 5%

—||— PLATE CERAMIC CAPACITOR

—□— MINIATURE ELECTROLYTIC CAPACITOR

ON/OFF SK-B

AC MAINS/BATTERY SECTEUR

ON/OFF

SK-C

ELECTRONIC VOLTMETER

V AM
V FM

12481E12

THE CIRCUIT HAS BEEN DRAWN IN POSITION :
CE CIRCUIT A ÉTÉ DESSINÉ EN POSITION :

