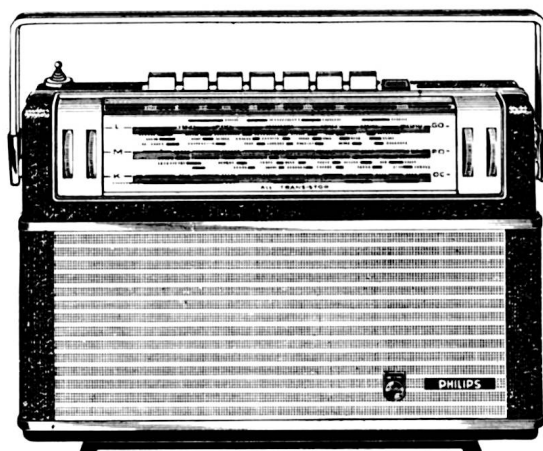


Département SERVICE Central
20, Avenue HENRI-BARBUSSE, BOBIGNY (Seine)

Classement { Saison 1967-1968
 { Classeur 11



Présentation :

Coffret bois gainé noir 306 × 204 × 90, grille métal.
Poignée métal.
Commandes :
De gauche à droite : Molette puissance, molette tonalité.
Touches : Eclairage cadran, arrêt marche, AFC, GO,
PO-OC-FM.
Molette syntonisation FM, molette syntonisation AM.

CARACTÉRISTIQUES GÉNÉRALES

Alimentation :

6 V par 4 piles de 1,5 V en série.

Consommation :

92 mA pour 50 mW.

Haut-parleur :

Type AD 3574 M 183 × 133 Z = 5 Ω.
Prise pour écouteur 1 000 à 1 500 Ω type AF 9120/10.

Puissance de sortie :

1 W pour 10 % de distorsion.

Gammes d'ondes :

GO : 1 150 à 2 000 m (260 à 150 khz).
PO : 185 à 580 m (1 622 à 517 khz) FI AM : 452 khz.
OC : 24,8 à 50,8 m (12,1 à 5,9 Mhz).
FM : (87,5 à 108 Mhz) FI FM : 10,7 Mhz

Equipement :

— Transistors :

TS1 - AF 124 - AF - FM.
TS2 - AF 125 Oscillateur mélangeur FM.
TS3 - AF 126 Oscillateur mélangeur AM Ampli FI FM.
TS4 - AF 126 Ampli FI AM/FM.
TS5 - AF 126 Ampli FI AM/FM.
TS6 - AC 126 Ampli BF.
TS7 - AC 125 Ampli BF.
TS8 2 × AC 128 Etage de sortie BF.
TS9

— Diodes :

GR1 Stabilisation.
GR2 AFC.
GR3 CAG.
GR4-5 Détection FM.
GR5 Détection AM.
L1-L2 7121 D/00 - Eclairage cadran.
L3-7111 D - Contrôle batterie.

INFORMATIONS
SERVICE

PHILIPS "Eclairage - Radio - Ménager"

— Société Anonyme au Capital de 100 Millions de Francs

Siège Social : 50, Avenue Montaigne - PARIS - VIII^e

— Registre du Commerce Seine 62 B5173

Strictement confidentiel — Document uniquement destiné aux commerçants chargés du Service Philips. — Reproduction interdite.

RA7-14



RÉGLAGES CIRCUITS RF ET FI

| Circuit | Gamme | CV | Signal | | Régler | Indications |
|---------|-------|----------------------------------|-----------------------------------|--|----------------------------|---|
| FI/AM | PO | B | 452 khz via 33 nF | S 38/C 40 | S 45-46 | Maximum de sortie |
| | | | | C 30/S 27 | S 38-S 39 S 35-36-37 | |
| | | | | C 1 | S 27-28 S 25-26 | |
| | | | | C 1 | S 8-S 9 | Minimum de sortie |
| RF/AM | GO | A | 156 khz | Antenne voiture | S 10-S 11-S 12 * S58-59 | Maximum de sortie |
| | PO | B | 1500 khz | | C16-C76 * | |
| | | Accor- der l'appareil | 550 khz | | S56-S57 * | |
| | GO | A | 156 khz | | S5-S6 * | |
| | PO | Accor- der l'appareil | 550 khz | Boucle de couplage sur le cadre FXC | S3-S4 * | Maximum de sortie |
| | | B | 1500 khz | | C7 * | |
| | OC | A | 6,25 Mhz | Sur l'an- tenne via 5,6 pF | S13-11-15-S7 * | Maximum de sortie |
| | | B | 11,8 Mhz | | C20-C9 * | |
| FI/FM | FM | 87 Mhz | 10,7 Mhz via 1500 pF (1) | S32/C37 | S40-41 S42-43-44 (2) | Régler à la hauteur et à la symétrie max. de la courbe de réponse |
| | | | | S23/C27 | S29-30-31 S32-33-34 | |
| | | | | S16/C11 | S19-20-21 S22-23-24 | |
| | | Accor- der l'appa- reil | 96 Mhz (1) | Sur l'antenne | S110-S111 S16-17-18 | |
| | | | | | S42-S43-S44 (3) | (4) |
| RF/FM | FM | 88 Mhz | 88 Mhz | | S109 | Maximum de sortie |
| | | 104 Mhz | 104 Mhz | | C114 | |
| | | 96 Mhz | 96 Mhz | | C106 | |

* Répéter ces réglages.

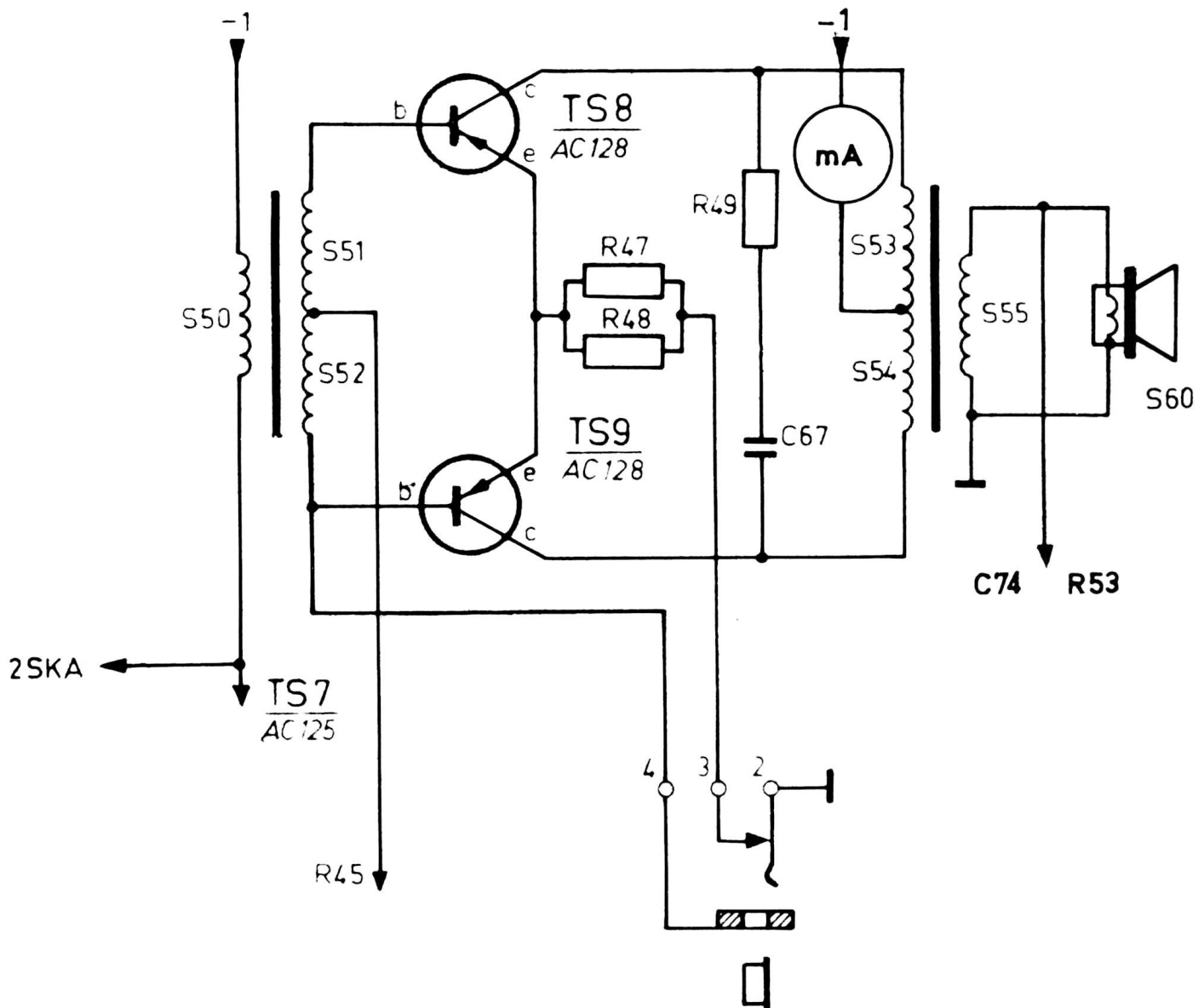
- (1) Signal modulé en fréquence avec une excursion de 200 khz.
- (2) Débrancher C48 et brancher un oscilloscope au point S42-C45.
- (3) Rebrancher C48 et brancher l'oscilloscope au point C62-R31.
- (4) Ajuster à la hauteur et à la symétrie maximale de la courbe en S.

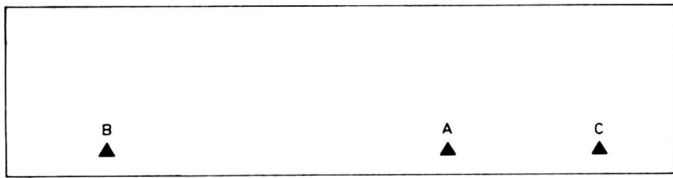
RÉGLAGES

Courant de repos de l'étage de sortie :

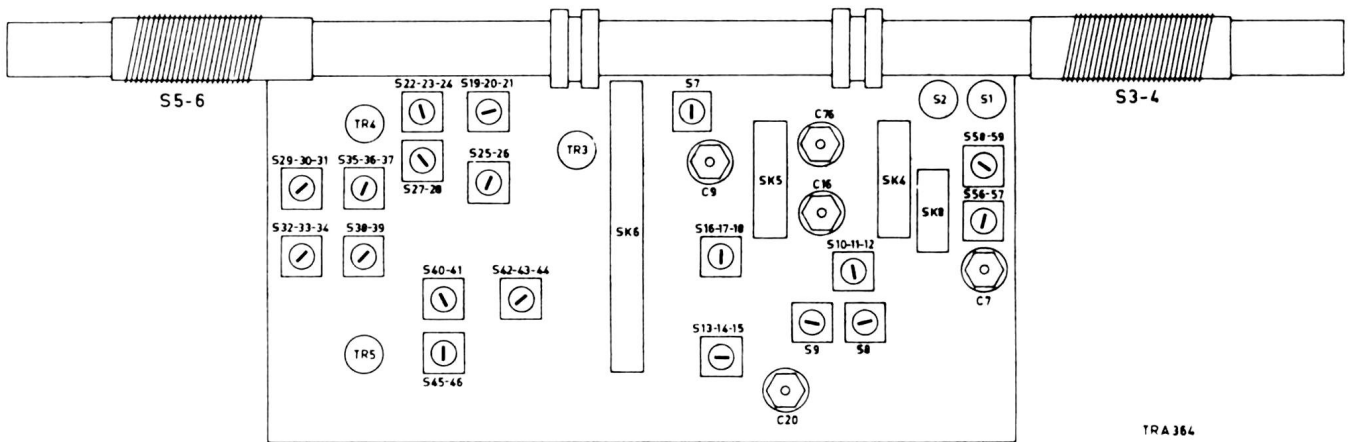
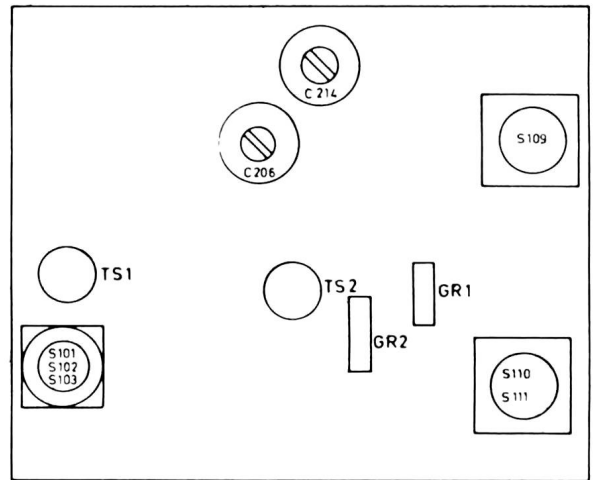
- Potentiomètre de puissance au minimum - Position FM.
- Brancher un milliampèremètre entre le point milieu du transformateur de sortie et le -6 V (voir figure ci-dessous).
- Régler le courant de repos suivant le tableau ci-dessous en agissant sur R45.

| Température en °C | 15 | 18 | 22 | 25 | 27 | 29 | 31 | 34 | 36 | 38 | 40 |
|-------------------|----|-----|----|----|-----|----|-----|-----|-----|------|----|
| Ic en mA | 4 | 4,5 | 5 | 6 | 6,5 | 7 | 7,6 | 8,8 | 9,5 | 10,7 | 12 |

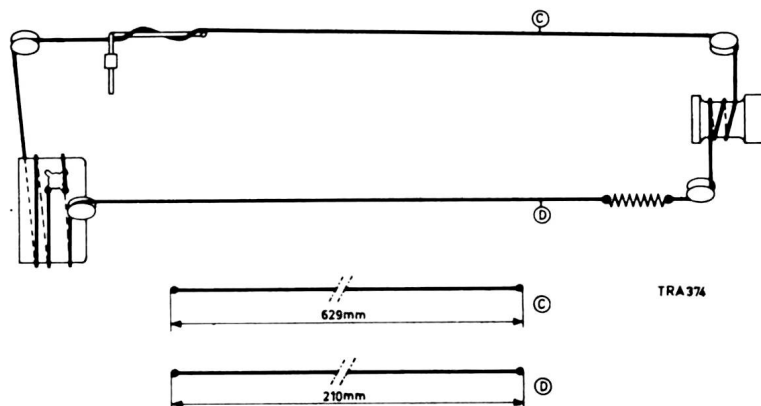
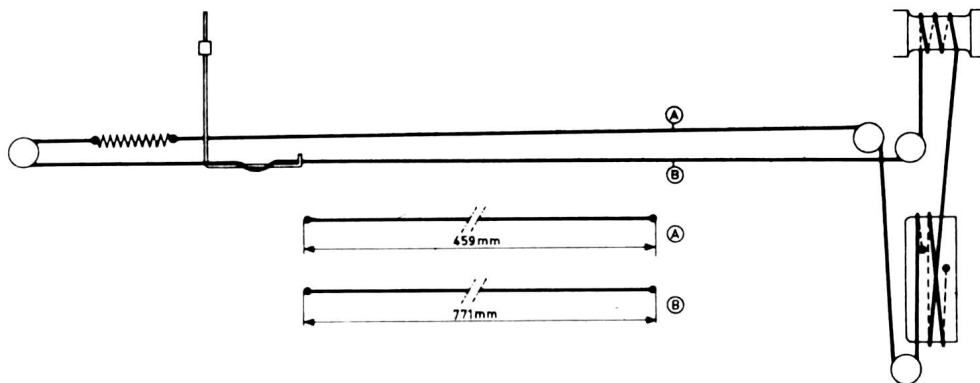




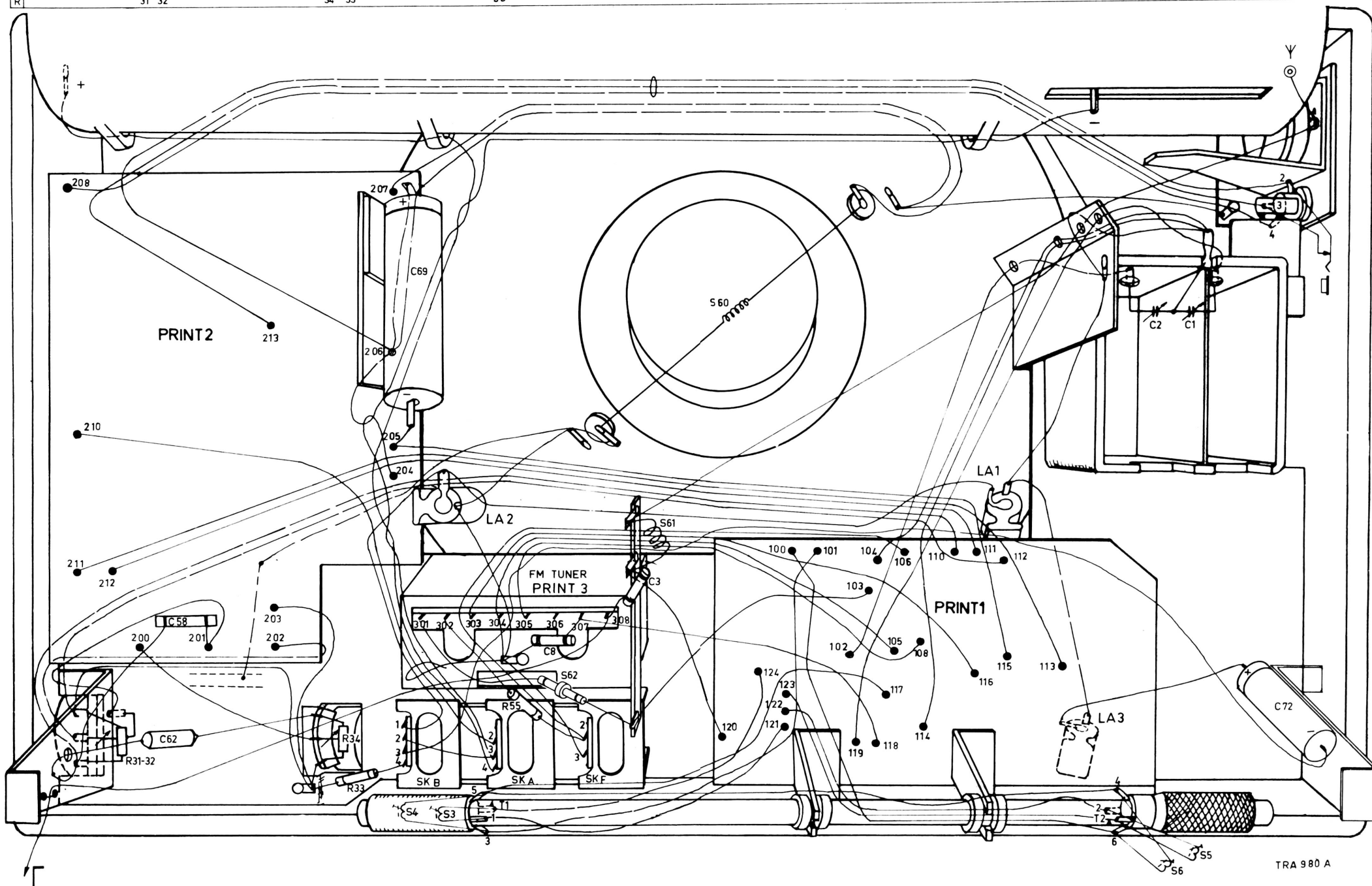
TRA 975



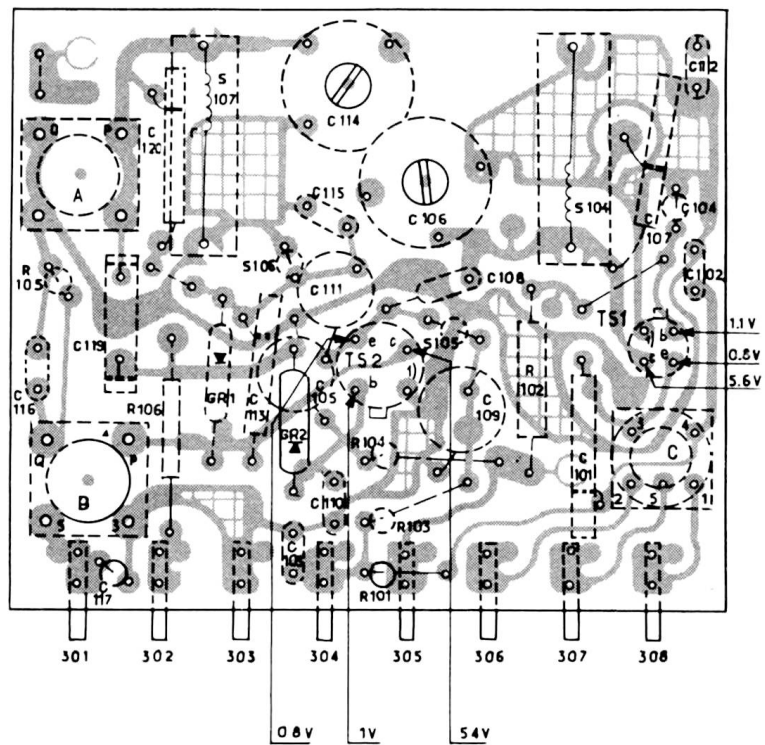
TRA 364



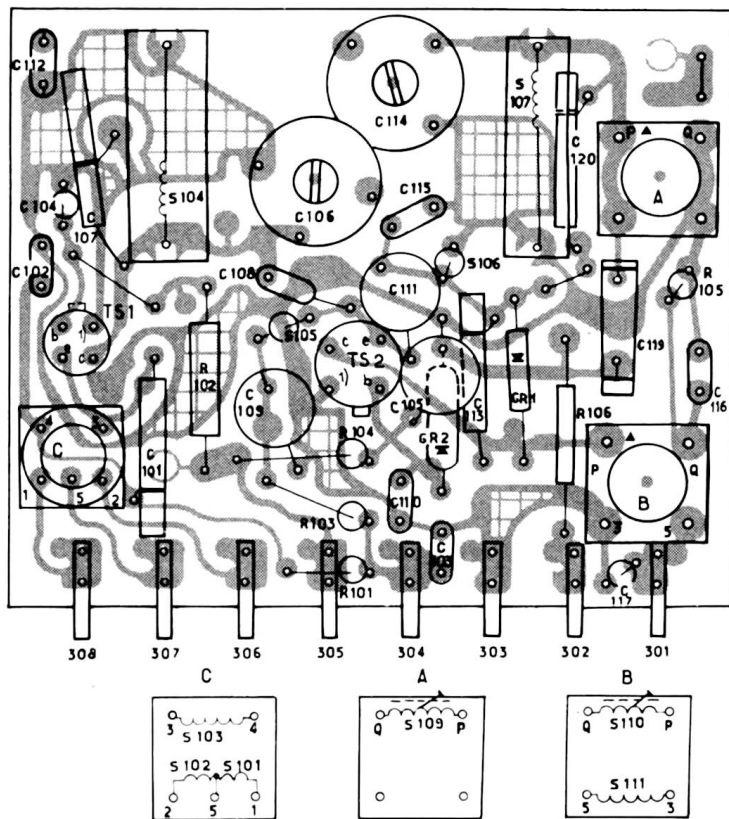
TRA 374

[illegible]

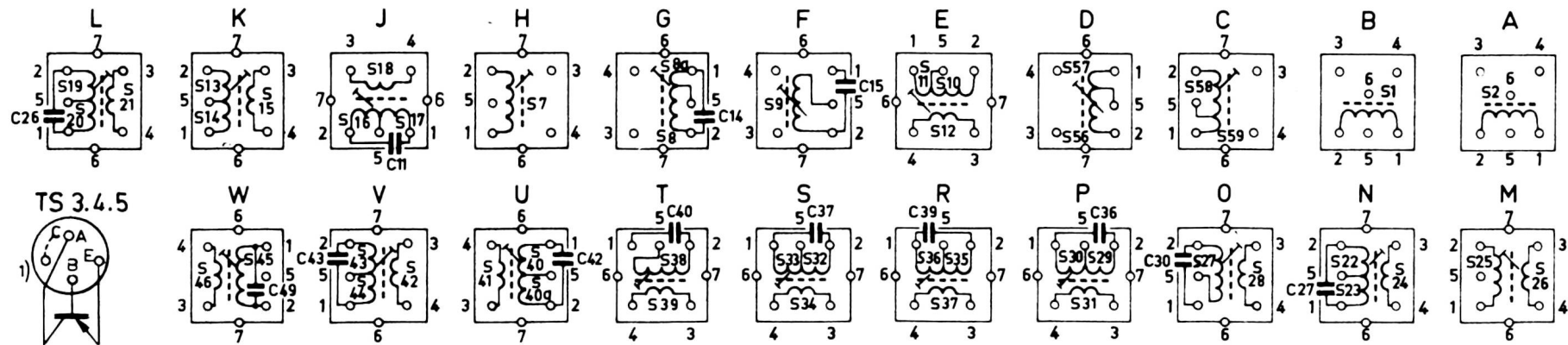
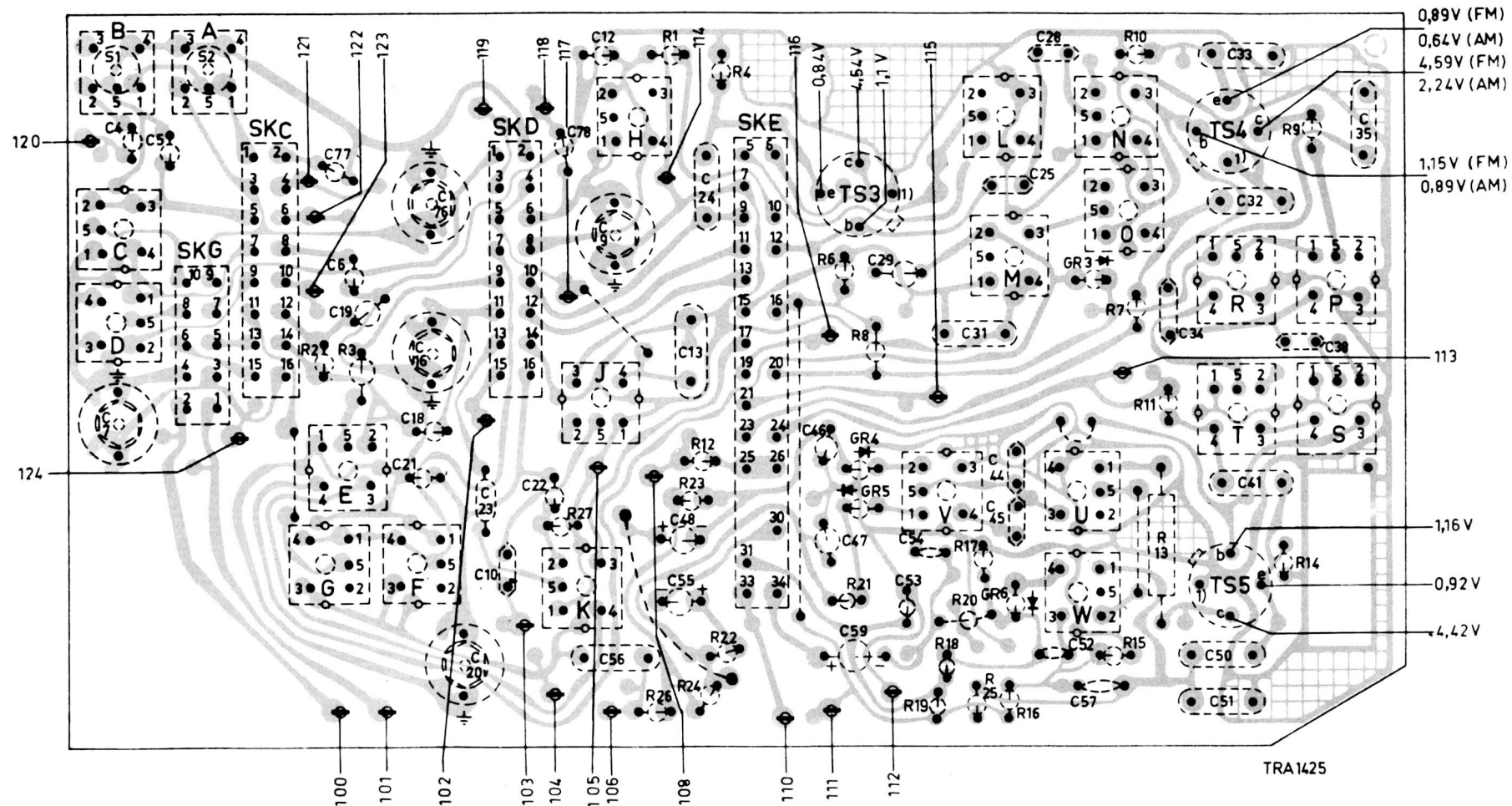
| S | B | A | 107 | 106 | 105 | 104 | C |
|---|-----|---------|-----|-----------------------------|-------------|-----|-----------------|
| C | 116 | 117 119 | 120 | 113 103 105 115 110 111 114 | 106 108 109 | 101 | 107 104 112 102 |
| R | 105 | 106 | | 101 103 104 | | 102 | |

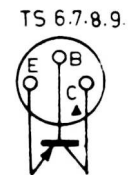


| S | C | 104 | 105 | 106 | 107 | A | B |
|---|-----------------|-----|---|-----|---------|-----|-----|
| C | 102 112 104 107 | 101 | 109 108 106 114 111 110 115 105 103 113 | 120 | 119 117 | 116 | |
| R | | 102 | 104 103 101 | | 106 | | 105 |

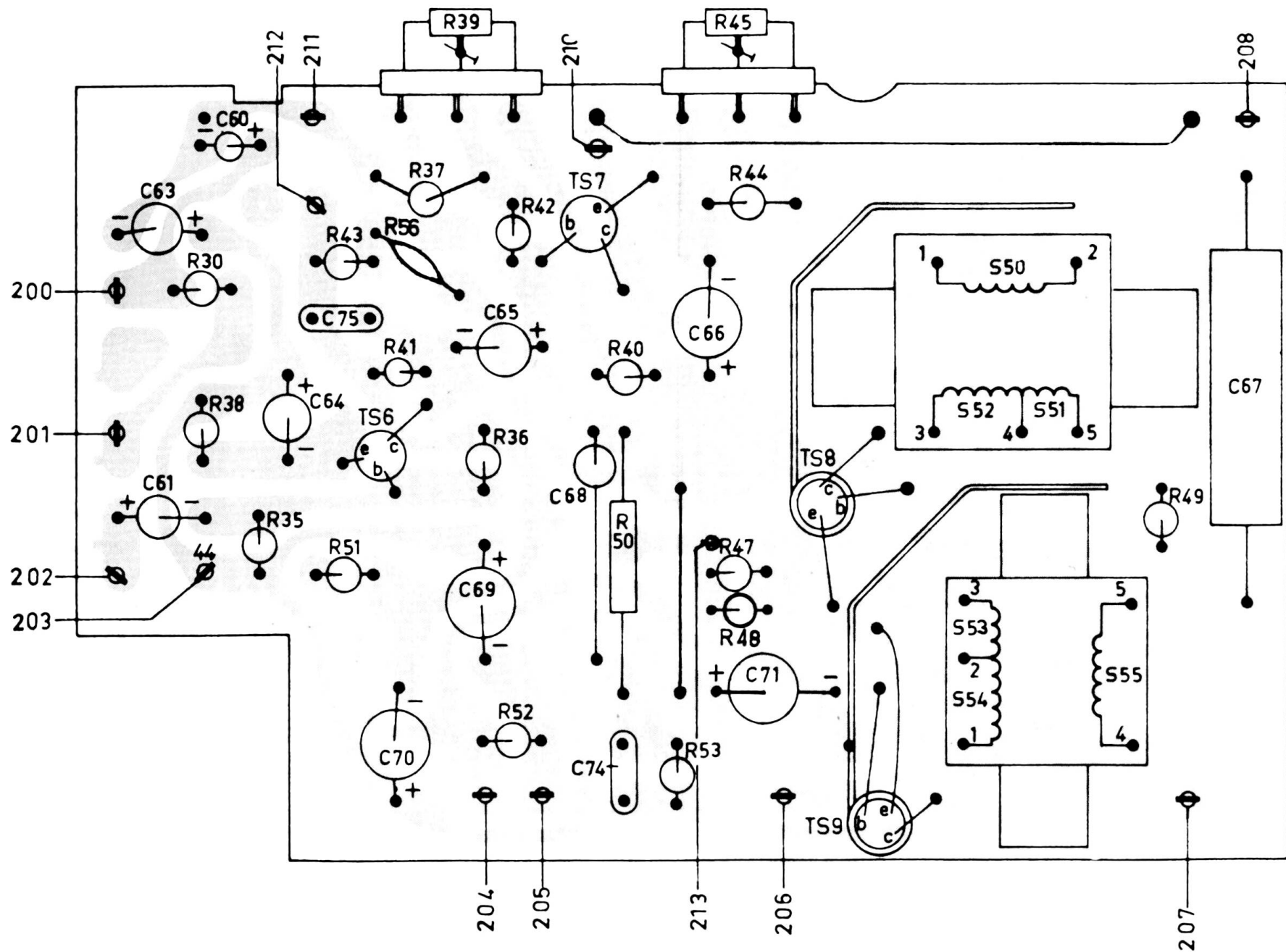


| S | BCD | A | G | E | F | K | J | H | V | LM | UW | N | O | RT | P | S |
|---|-------|---|---------|----------|-------------|---------------|-------------|-------------------|----|----------------|----|----------------------|-------------------|----|---|---|
| C | 7 4 5 | | 77 6 19 | 21 18 76 | 16 20 23 10 | 22 78 12 9 56 | 55 48 13 24 | 46 47 59 29 53 54 | 31 | 25 44 45 28 52 | 57 | 34 | 50 51 33 32 41 38 | 35 | | |
| R | | | 2 | 3 | | 27 | 1 | 26 23 12 24 4 22 | 6 | 21 8 | 15 | 19 18 20 25 19 16 17 | 15 10 7 13 11 | 14 | 9 | |

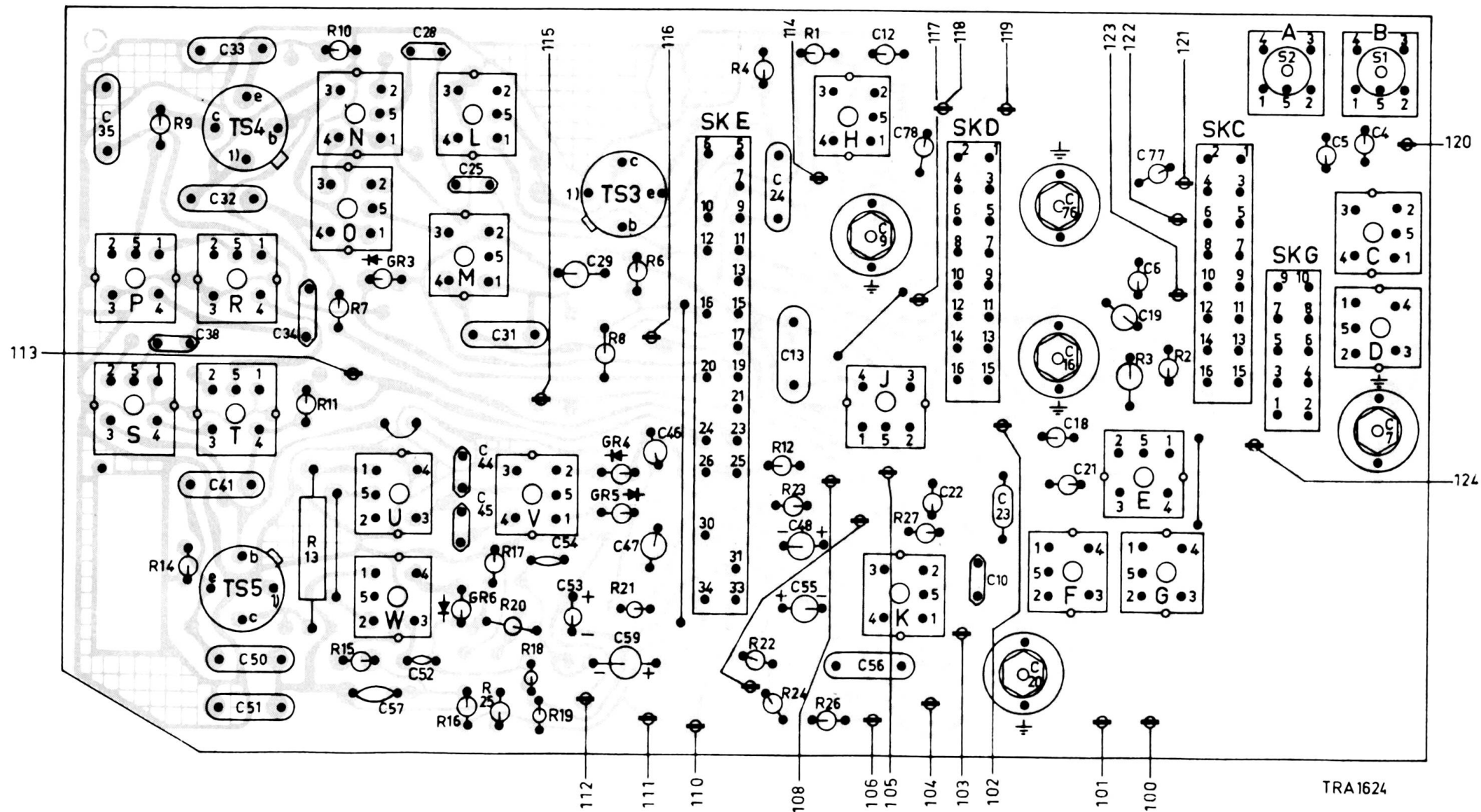


TRA362 A

| | | | | | | | | | | | | | | | | | | | | | | | | |
|---|----|----|----|----|----|----|----|----|----|----|----|----|----|----|----|----|----|----|----|----|----|--|----|----|
| S | | | | | | | | | | | | | | | | | 54 | 53 | 51 | 50 | 52 | | | 55 |
| C | 61 | 63 | 60 | 64 | 75 | 70 | | 69 | 65 | 68 | 74 | 66 | | 71 | | | | | 67 | | | | | |
| R | 38 | | 30 | 35 | 51 | 43 | 56 | 41 | 37 | 39 | 36 | 52 | 42 | 50 | 40 | 53 | 47 | 48 | 45 | 44 | | | 49 | |



| S | S P | | | T R | | | O N W U | | | M L | | | V | H | | | J | K | F E G | | | A | D C B | | | | | | | | | | | | | | | | | | | |
|---|-----|----|----|-----|----|----|---------|----|----|-----|----|----|----|----|----|----|----|----|-------|----|----|----|-------|----|----|---|----|----|----|----|----|----|----|----|----|----|----|---|----|---|---|---|
| C | 35 | 38 | 41 | 32 | 33 | 51 | 50 | 34 | 57 | 52 | 28 | 45 | 44 | 25 | 31 | 54 | 29 | 59 | 47 | 46 | 24 | 13 | 48 | 55 | 56 | 9 | 12 | 78 | 22 | 10 | 23 | 20 | 16 | 76 | 18 | 21 | 19 | 6 | 77 | 5 | 4 | 7 |
| R | 9 | 14 | | | | | | 11 | 13 | 7 | 10 | 15 | 17 | 16 | 19 | 25 | 20 | 18 | 19 | 15 | 8 | 21 | 6 | 1 | 22 | 4 | 24 | 12 | 23 | 26 | | | | | | | 3 | 2 | | | | |



The diagram is a detailed electronic schematic for a radio receiver, likely a portable model given the inclusion of a battery section. It features several vacuum tube stages, including a TS1 AF104, TS2 AF125, TS3 AF106, TS4 AF106, TS5 AF126, TS6 AC126, TS7 AC126, TS8 AC126, and TS9 AC126. The circuit includes a power supply section with a transformer (S1), a rectifier (GR1), and a filter (C1). The main tuning circuit consists of a series of tuned circuits (S2, S3, S4, S5, S6, S7, S8, S9, S10, S11, S12, S13, S14, S15, S16, S17, S18, S19, S20, S21, S22, S23, S24, S25, S26, S27, S28, S29, S30, S31, S32, S33, S34, S35, S36, S37, S38, S39, S40, S41, S42, S43, S44, S45, S46, S47, S48, S49, S50, S51, S52, S53, S54, S55, S56, S57, S58, S59, S60, S61, S62, S63, S64, S65, S66, S67, S68, S69, S70, S71, S72, S73, S74, S75, S76, S77, S78, S79, S80, S81, S82, S83, S84, S85, S86, S87, S88, S89, S90, S91, S92, S93, S94, S95, S96, S97, S98, S99, S100, S101, S102, S103, S104, S105, S106, S107, S108, S109, S110, S111, S112, S113, S114, S115, S116, S117, S118, S119, S120, S121, S122, S123, S124, S125, S126, S127, S128, S129, S130, S131, S132, S133, S134, S135, S136, S137, S138, S139, S140, S141, S142, S143, S144, S145, S146, S147, S148, S149, S150, S151, S152, S153, S154, S155, S156, S157, S158, S159, S160, S161, S162, S163, S164, S165, S166, S167, S168, S169, S170, S171, S172, S173, S174, S175, S176, S177, S178, S179, S180, S181, S182, S183, S184, S185, S186, S187, S188, S189, S190, S191, S192, S193, S194, S195, S196, S197, S198, S199, S200, S201, S202, S203, S204, S205, S206, S207, S208, S209, S210, S211, S212, S213, S214, S215, S216, S217, S218, S219, S220, S221, S222, S223, S224, S225, S226, S227, S228, S229, S230, S231, S232, S233, S234, S235, S236, S237, S238, S239, S240, S241, S242, S243, S244, S245, S246, S247, S248, S249, S250, S251, S252, S253, S254, S255, S256, S257, S258, S259, S260, S261, S262, S263, S264, S265, S266, S267, S268, S269, S270, S271, S272, S273, S274, S275, S276, S277, S278, S279, S280, S281, S282, S283, S284, S285, S286, S287, S288, S289, S290, S291, S292, S293, S294, S295, S296, S297, S298, S299, S300, S301, S302, S303, S304, S305, S306, S307, S308, S309, S310, S311, S312, S313, S314, S315, S316, S317, S318, S319, S320, S321, S322, S323, S324, S325, S326, S327, S328, S329, S330, S331, S332, S333, S334, S335, S336, S337, S338, S339, S340, S341, S342, S343, S344, S345, S346, S347, S348, S349, S350, S351, S352, S353, S354, S355, S356, S357, S358, S359, S360, S361, S362, S363, S364, S365, S366, S367, S368, S369, S370, S371, S372, S373, S374, S375, S376, S377, S378, S379, S380, S381, S382, S383, S384, S385, S386, S387, S388, S389, S390, S391, S392, S393, S394, S395, S396, S397, S398, S399, S400, S401, S402, S403, S404, S405, S406, S407, S408, S409, S410, S411, S412, S413, S414, S415, S416, S417, S418, S419, S420, S421, S422, S423, S424, S425, S426, S427, S428, S429, S430, S431, S432, S433, S434, S435, S436, S437, S438, S439, S440, S441, S442, S443, S444, S445, S446, S447, S448, S449, S450, S451, S452, S453, S454, S455, S456, S457, S458, S459, S460, S461, S462, S463, S464, S465, S466, S467, S468, S469, S470, S471, S472, S473, S474, S475, S476, S477, S478, S479, S480, S481, S482, S483, S484, S485, S486, S487, S488, S489, S490, S491, S492, S493, S494, S495, S496, S497, S498, S499, S500, S501, S502, S503, S504, S505, S506, S507, S508, S509, S510, S511, S512, S513, S514, S515, S516, S517, S518, S519, S520, S521, S522, S523, S524, S525, S526, S527, S528, S529, S530, S531, S532, S533, S534, S535, S536, S537, S538, S539, S540, S541, S542, S543, S544, S545, S546, S547, S548, S549, S550, S551, S552, S553, S554, S555, S556, S557, S558, S559, S560, S561, S562, S563, S564, S565, S566, S567, S568, S569, S570, S571, S572, S573, S574, S575, S576, S577, S578, S579, S580, S581, S582, S583, S584, S585, S586, S587, S588, S589, S590, S591, S592, S593, S594, S595, S596, S597, S598, S599, S600, S601, S602, S603, S604, S605, S606, S607, S608, S609, S610, S611, S612, S613, S614, S615, S616, S617, S618, S619, S620, S621, S622, S623, S624, S625, S626, S627, S628, S629, S630, S631, S632, S633, S634, S635, S636, S637, S638, S639, S640, S641, S642, S643, S644, S645, S646, S647, S648, S649, S650, S651, S652, S653, S654, S655, S656, S657, S658, S659, S660, S661, S662, S663, S664, S665, S666, S667, S668, S669, S670, S671, S672, S673, S674, S675, S676, S677, S678, S679, S680, S681, S682, S683, S684, S685, S686, S687, S688, S689, S690, S691, S692, S693, S694, S695, S696, S697, S698, S699, S700, S701, S702, S703, S704, S705, S706, S707, S708, S709, S710, S711, S712, S713, S714, S715, S716, S717, S718, S719, S720, S721, S722, S723, S724, S725, S726, S727, S728, S729, S730, S731, S732, S733, S734, S735, S736, S737, S738, S739, S740, S741, S742, S743, S744, S745, S746, S747, S748, S749, S750, S751, S752, S753, S754, S755, S756, S757, S758, S759, S760, S761, S762, S763, S764, S765, S766, S767, S768, S769, S770, S771, S772, S773, S774, S775, S776, S777, S778, S779, S780, S781, S782, S783, S784, S785, S786, S787, S788, S789, S790, S791, S792, S793, S794, S795, S796, S797, S798, S799, S800, S801, S802, S803, S804, S805, S806, S807, S808, S809, S810, S811, S812, S813, S