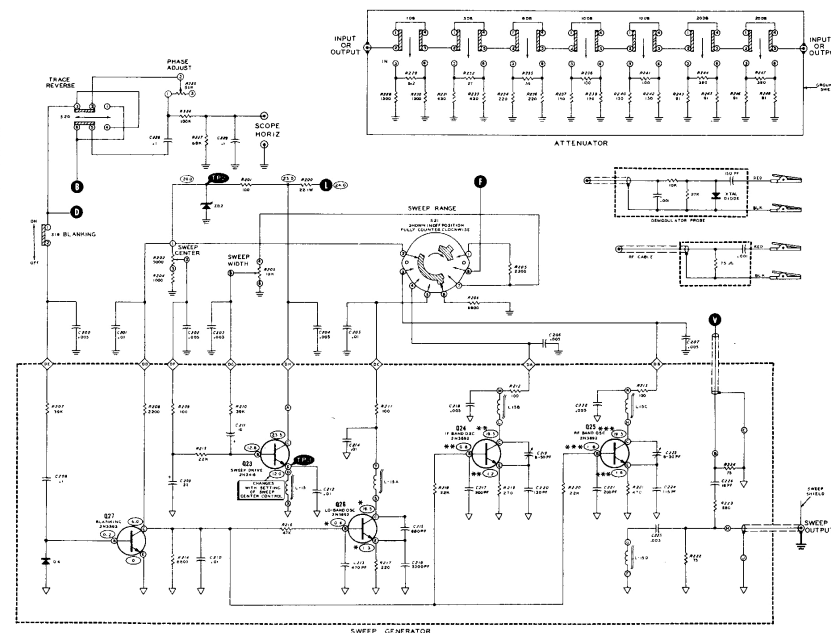


SCHEMATIC OF THE
HEATHKIT®
T V POST-MARKER/SWEEP GENERATOR
MODEL IG-57



GENERAL NOTES

1. ALL RESISTORS ARE 1/2 WATT UNLESS MARKED OTHERWISE. RESISTOR VALUES ARE IN OHMS IN 1,000, 10K, 100K, 1M, 1000K.
2. ALL CAPACITOR VALUES ARE IN μ F UNLESS MARKED OTHERWISE.
3. \bigcirc INDICATES DC VOLTAGE MEASURED FROM POINT INDICATED TO GROUND. VOLTAGE READINGS TAKEN WITH AN 11 MEGOHM INPUT ELECTRONIC VOLTMETER. VOLTAGE MAY VARY $\pm 20\%$.
4. BIAS SUPPLY VOLTAGE IS ISOLATED FROM CHASSIS GROUND.
5. SWITCHES SHOWN IN THE OFF POSITION UNLESS OTHERWISE MARKED.
6. REFER TO THE CHASSIS PHOTOGRAPHS AND CIRCUIT BOARD X-RAY VIEWS FOR THE PHYSICAL LOCATION OF PARTS.
7. **A** THIS TYPE OF SYMBOL INDICATES LETTERED HOLE IN CIRCUIT BOARD.
8. **B** THIS TYPE OF SYMBOL INDICATES LETTERED HOLE IN AMPLIFIER CIRCUIT BOARD IN WHICH LEADS FROM SWEEP GENERATOR CIRCUIT ARE CONNECTED.

9. \diamond INDICATES FEED-THROUGH ON SWEEP SHIELD.
10. ∇ INDICATES COMMON FOIL CONNECTION ON CIRCUIT BOARDS.
11. $\text{---}\text{---}\text{---}$ INDICATES CHASSIS GROUND.
12. $\text{---}\text{---}\text{---}$ INDICATES WINDING ON CONTROLLABLE INDUCTOR.
13. TRANSISTOR LEAD IDENTIFICATION AS VIEWED FROM BOTTOM OF TRANSISTOR.

7N3072
7N3072
7N3072

7N3072
7N3072
7N3072

SPECIAL NOTES

- WHEN MAKING SWEEP GENERATOR VOLTAGE MEASUREMENTS:
- A. PLACE BLANKING SWITCH IN THE ON POSITION.
 - B. TURN THE OTHER CONTROLS TO THE 12 O'CLOCK POSITION.
 - C. ADJUST SWEEP CENTER CONTROL UNTIL VOLTAGE AT TP-3 (E OF Q23) IS 512.0 DC.
- OSCILLATOR VOLTAGE READINGS:
- A. SWEEP RANGE SWITCH IN LO POSITION.
 - B. SWEEP RANGE SWITCH IN IF POSITION.
 - C. SWEEP RANGE SWITCH IN RF POSITION.