

Figure 8. Tube Layout and Adjustment Points

Under-compensation and over-compensation are indicated by square waves appearing as in Figs. 10a and 10b, respectively. Proper compensation is indicated by square waves appearing as in Fig. 10c.

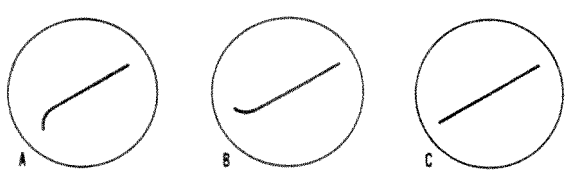


Figure 9. Trimmer Adjust Pattern

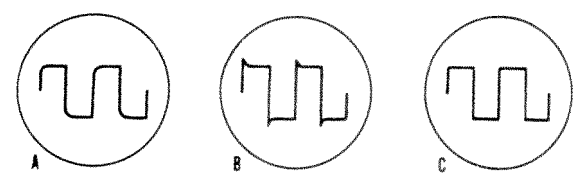
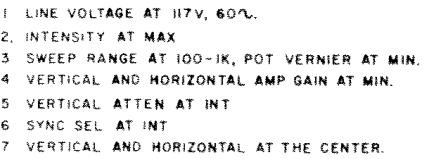
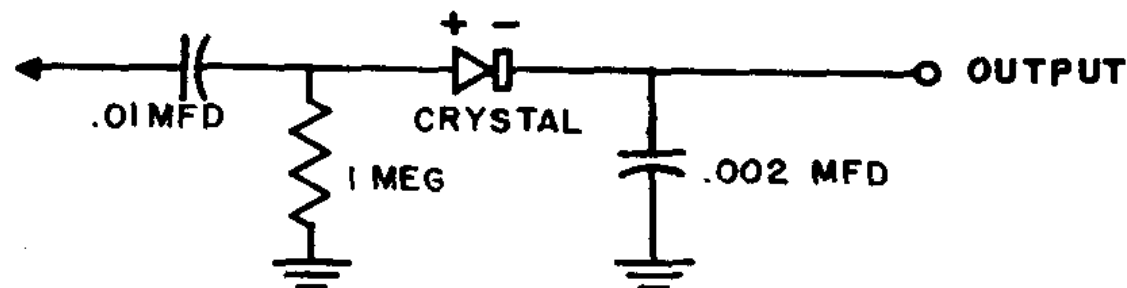
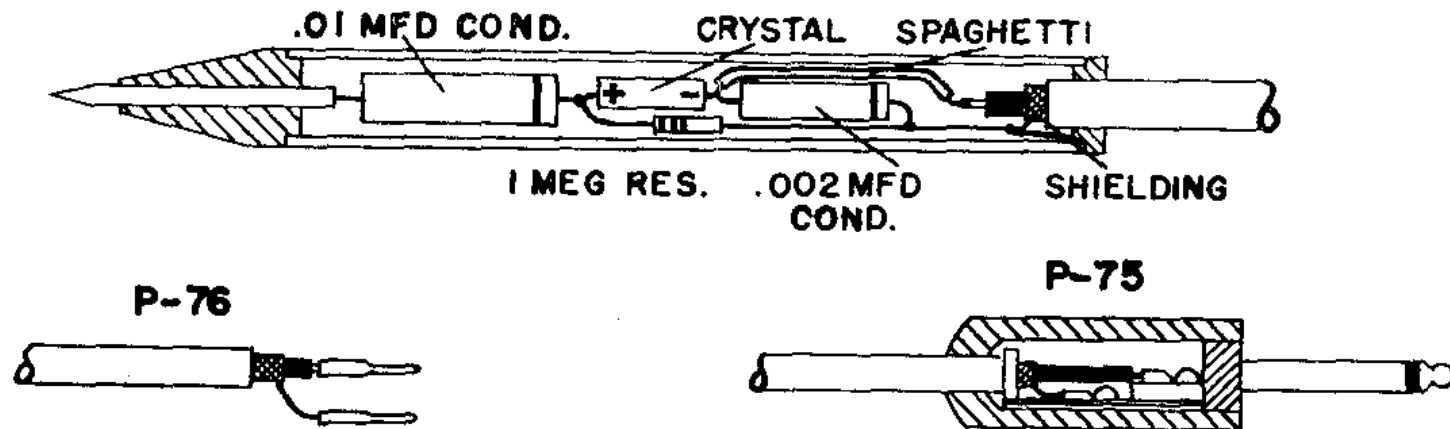


Figure 10. Trimmer Adjust Pattern  
(Square Wave)



# MODEL P-75 & P-76 RF PROBE



CIRCUIT DIAGRAM

**EICO**

NOTES:

1. DO NOT OVERHEAT RECTIFIER
2. KEEP LEADS SHORT AND RIGID

ELECTRONIC INSTRUMENT  
CO., INC.

BROOKLYN, N.Y.