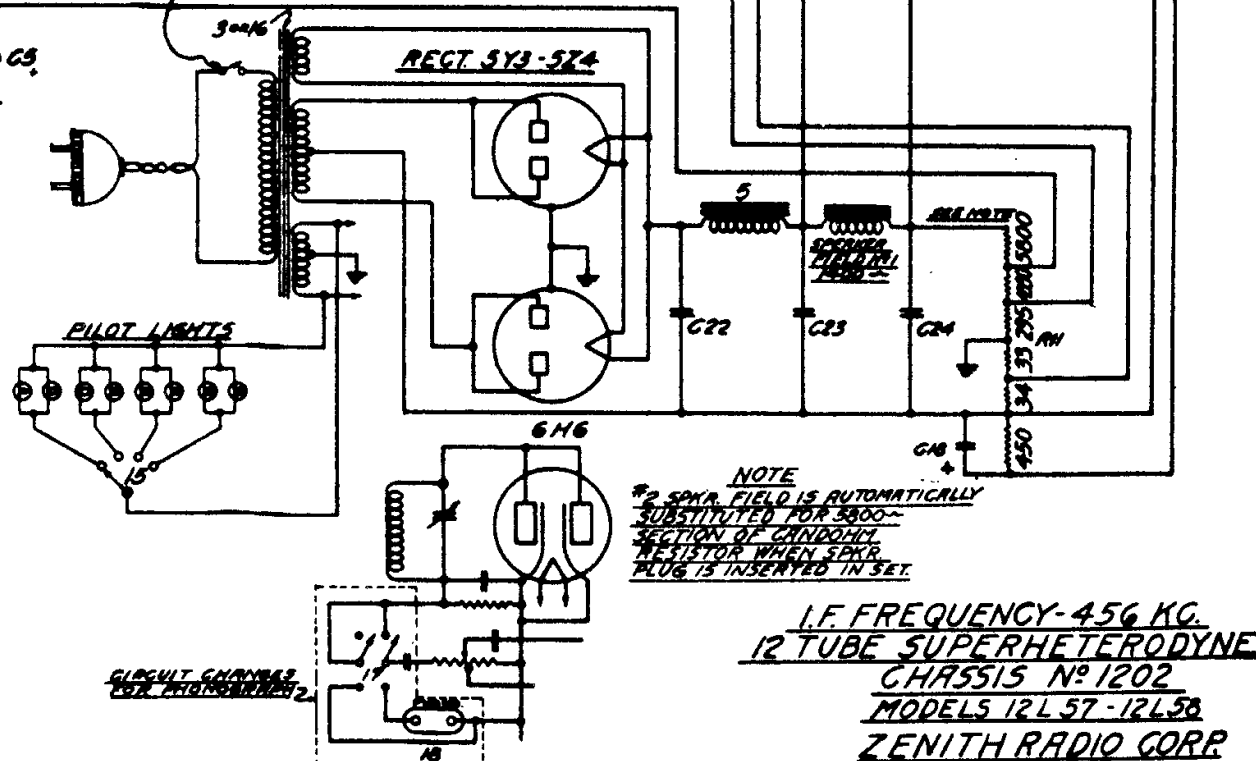


DRG No	PART No	DESCRIPTION	
R1	63-278	95M OHMS	1W.
R2	63-280	49M	1W.
R3	63-288	19M	1W.
R4	63-293	990M	1W.
R5	63-303	700	1W.
R6	63-373	11M	1W.
R7	63-450	1MEG. VOL. CONTROL	1W.
R8	63-451	1MEG. TONE CONTROL	1W.
R9	63-481	400M OHMS	1W.
R10	63-466	990	1W.
R11	63-471	CANDIDM	1W.
R12	63-242	2500 OHMS	1W.
C1	22-82	.001 MFD.	600K
C2	22-127	.000025	600K
C3	22-147	.0005	600K
C4	22-162	.0001	600K
C5	22-170	.1	400K
C6	22-188	.02	400K
C7	22-190	.1	200K
C8	22-212	.05	400K
C9	22-229	.005	600K
C10	22-243	.01	400K
C11	22-289	.00005	600K
C12	22-324	2-35 MMFD. 3 SECTION	600K
C13	22-345	.0011	600K
C14	22-358	.002	600K
C15	22-209	200-550 MMFD. PADDER	600K
C16	22-368	.003	600K
C17	22-409	3 GANG VARIABLE	50V
C18	22-403	10 MFD.	600K
C19	22-410	.003	600K
C20	22-411	.0023	600K
C21	22-418	2-35 MMFD.	600K

DRG No	PART No	DESCRIPTION	
C22	22-294	16 MFD.	450V.
C23	22-445	8 MFD.	400K
C24	22-433	5 MFD.	600K
C25	22-435	.02	600K
C26	22-424	50-100 MMFD. PADDER	25V.
C27	22-420	10 MFD.	200K
C28	22-250	.05 MFD.	200K
C29	22-291	1ST I.F. TRANS. - 456 KC.	
1	95-292	2ND I.F.	
2	95-306	117V. 50-60 CYCLE TRANS.	
3	95-307	AUDIO TRANS.	
4	95-320	POWER CHOKES	
5	122-10	SHADOW METER	
6	20-120	R.F. PLATE CHOKES	
7	20-124	ANT. CHOKES - 2MH.	
8	5-3747	ANT. COIL ASSEM.	
9	5-3746	DET. COIL ASSEM.	
10	5-3745	OSC. COIL ASSEM.	
11	49-121	12 SPKR - MODEL 12 L57	
12	49-124	12" - 3800~FIELD 12L58	
13	49-125	6" - 3800~FIELD 12L58	
14	95-302	BAND SELECTOR SW.	
15	95-310	25~ALL VOLT. PWR TRANS.	
16	85-39	PHONO. SWITCH.	
17	44-7	PHONO. JACK.	



NOTE
#2 SPKR. FIELD IS AUTOMATICALLY
SUBSTITUTED FOR 3800~
SECTION OF CANDIDM
RESISTOR WHEN SPKR.
PLUG IS INSERTED IN SET.

I.F. FREQUENCY-456 KC.
12 TUBE SUPERHETERODYNE
CHASSIS No 1202
MODELS 12L57-12L58
ZENITH RADIO CORP.