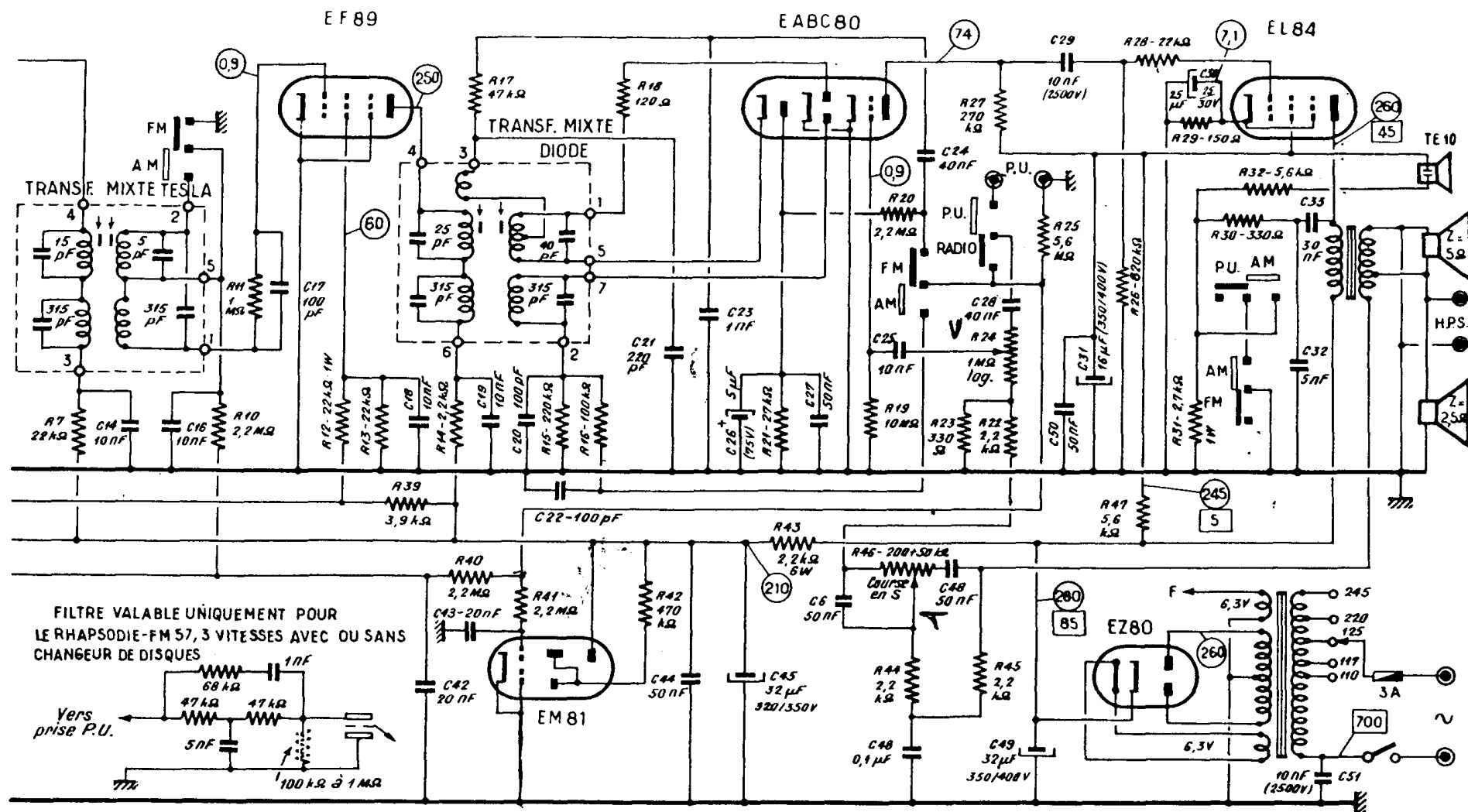
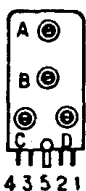
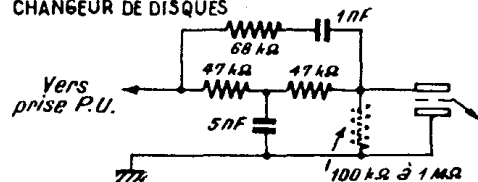


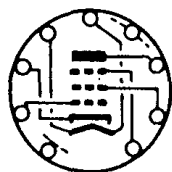
Voir à la page 50 les indications concernant la technique et l'alignement de ce récepteur.



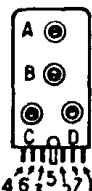
FILTRE VALABLE UNIQUEMENT POUR
LE RHAPSODIE-FM 57, 3 VITESSES AVEC OU SANS
CHANGEUR DE DISQUES



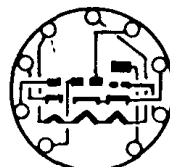
TRANSF. MIXTE TESLA



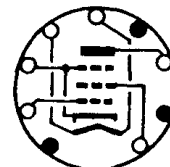
EF89



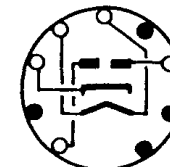
TRANSF. MIXTE DIODE



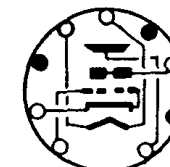
EABC80



EL84



EZ80



EM81