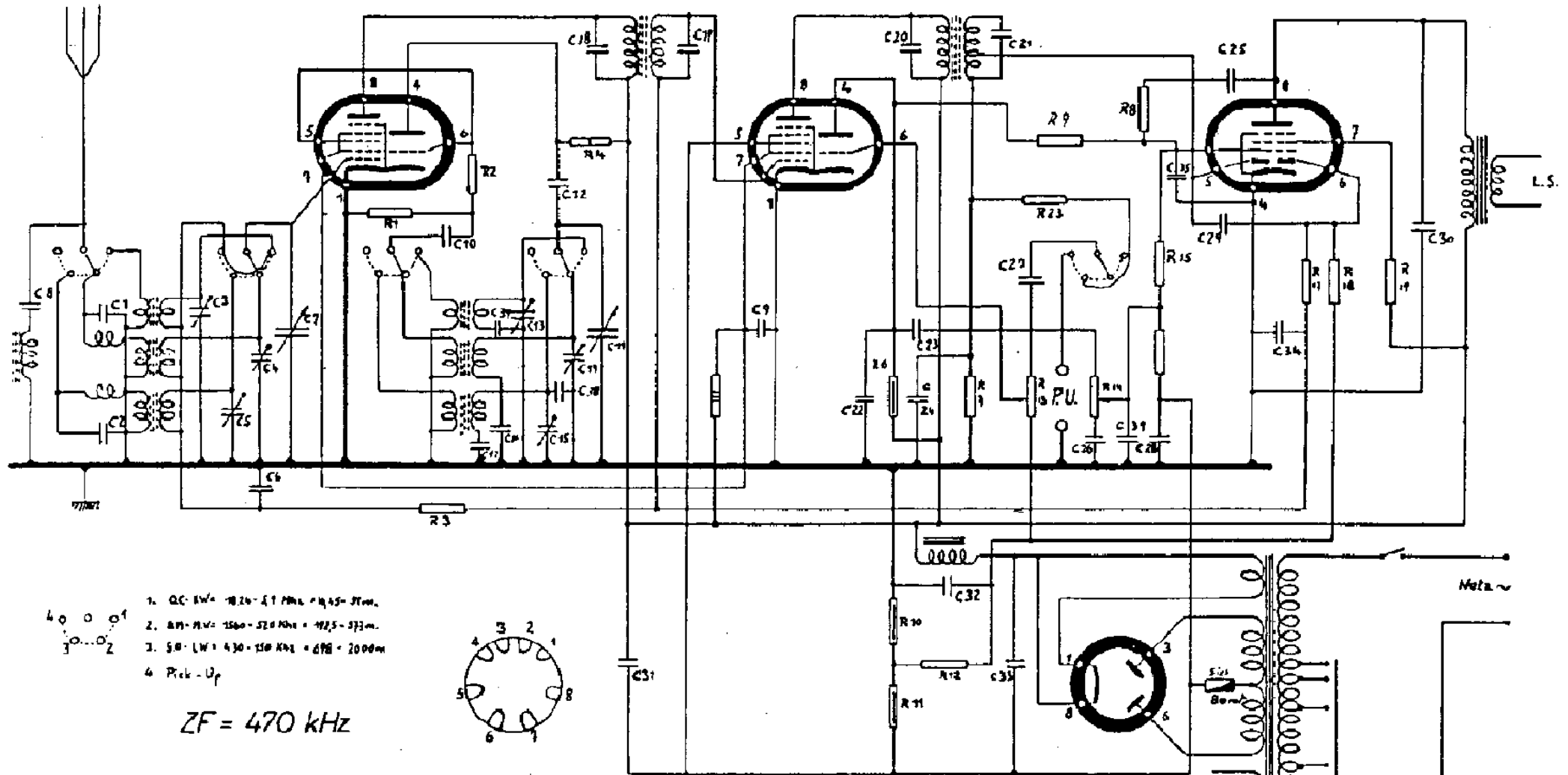


ECH 21

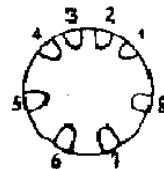
ECH 21

EBL 21



1. Q.C. KW = 18.24 - 5.1 MHz = 13.14 MHz
2. M.W. = 1500 - 52.0 KHz = 1475 - 52.0 KHz
3. S.B. (W) = 430 - 150 KHz = 478 - 2000 m
4. Pick - Up

ZF = 470 kHz



Widerstände: 1/4 Watt  
 1/2 --  
 1 --  
 3 --

AZ 1

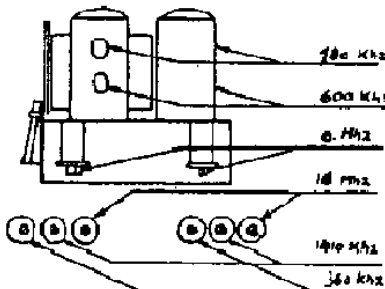
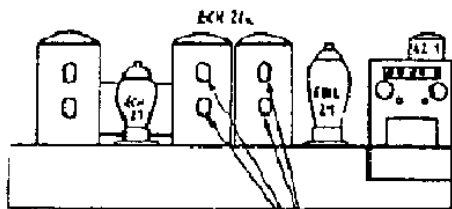
Abgleichfrequenzen KHz  
 Oscillator Vertres

KW	6030 + 18000	6030 + 18000
MW	600 + 1410	600 + 1410
LW	180 + 360	180 + 360

**DESO**

473

**Dewald & Sohn  
 Wollishofen**



Ausführung 2: ECH 21, ECH 21, EBL 21, EM4, AZ 1

# DESO 473

## Widerstände - Résistances

R 1	50 K-Ohm	1/4W
R 2	100 Ohm	1/4W
R 3	500 K-Ohm	1/4W
R 4	40 K-Ohm	1W
R 5	20 K-Ohm	3W
R 6	50 K-Ohm	1W
R 7	200 K-Ohm	1/4W
R 8	300 K-Ohm	1/4W
R 9	500 K-Ohm	1/4W
R 10	50 Ohm	2W
R 11	50 Ohm	2W
R 12	10 K-Ohm	1/4W
R 13	1 Megohm	-
R 14	0,5 Megohm	-
R 15	1000 Ohm	1/4W
R 16	500 K-Ohm	1/4W
R 17	1 Megohm	1/4W
R 18	1 Megohm	1/4W
R 19	100 Ohm	1/2W
R 23	100 K-Ohm	1/4W

C 9	0,1 uf
C 10	50 pf
C 11	-
C 12	200 pf
C 13	2-30 pf
C 14	2-30 pf
C 15	2-30 pf
C 16	471 pf
C 17	161 pf
C 18	200 pf
C 19	200 pf
C 20	100 pf
C 21	100 pf
C 22	1000 pf
C 23	20000 pf
C 24	50 pf
C 25	500 pf
C 26	3000 pf
C 27	20000 pf
C 28	50 uf
C 29	20 pf
C 30	2500 pf
C 31	25 uf
C 32	20 uf
C 33	25 uf
C 34	50000 pf
C 36	250 pf
C 37	2000 pf
C 38	35 pf
C 39	5000 pf

## Kondensatoren-Condensateurs

C 1	250 pf
C 2	400 pf
C 3	5-30 pf
C 4	5-30 pf
C 5	5-30 pf
C 6	0,1 uf
C 7	-
C 8	50 pf