

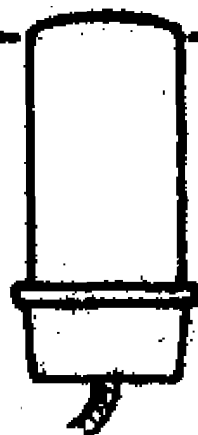
FIMI S. A. - PHONOLA - Mod. 903 Soprammobile. Onde medie I da 187,5 a 241 m; Onde medie II da 230 a 576 m; Bande allargate a 49, 41, 31, 25, 19, 15 m; Banda FM da 87 a 101 MHz. Media frequenza AM 470 KHz; media frequenza FM 10,7 MHz. Consumo 90 W. Potenza d'uscita 6 W.

PHONOLA 903

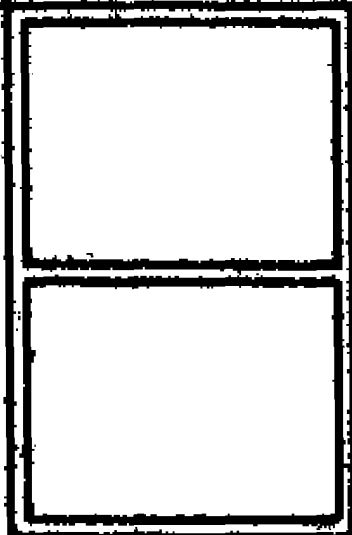
CAPACITÀ					RESISTENZE			
Nomin.	Valore	Toller. %	Tensione di prova In c.c.	Tipo	Nomin.	Valore	Toller. %	Watt
C 1	1.000 pf	-10+25	1500 V	carta	R 1	0,1 M Ω	± 10	1/4
C 2	10 "	± 5	1000 V	ag.	R 2	1.000 Ω	"	"
C 3	40 "	± 10	" V	"	R 3	63 K Ω	"	1/4
C 4	200 "	± 5	" V	"	R 4	20 K Ω	"	1/4
C 5	40 "	± 1	" V	"	R 5	1 M Ω	"	"
C 6	40 "	"	" V	"	R 6	4 M Ω	"	"
C 7	2.500 "	± 25	750 V	ceram.	R 7	1.000 Ω	"	"
C 8	40 "	± 10	1000 V	ag.	R 8	2.000 Ω	"	1/4
C 9	2.500 "	± 25	750 V	ceram.	R 9	25 K Ω	"	1
C 10	15 "	± 5	1000 V	ag.	R 10	3.150 Ω	"	1/4
C 11	25.000 "	-10+25	1500 V	carta	R 11	0,1 M Ω	"	1/4
C 12	2.500 "	± 25	750 V	ceram.	R 12	12,5 Ω	"	1/4
C 13	25 "	± 12	1500 V	"	R 13	0,25 M Ω	"	1/4
C 14	10 "	± 5	1000 V	ag.	R 14	80 K Ω	"	1/4
C 15	10 "	± 10	" V	"	R 15	0,5 M Ω	"	1/4
C 16	40 "	"	" V	"	R 16	0,1 M Ω	"	"
C 17	2 "	± 12	1500 V	ceram.	R 17	3.150 Ω	"	1/4
C 18	25 "	± 1	1000 V	ag.	R 18	2 M Ω	"	"
C 19	40 "	"	" V	"	R 19	0,1 M Ω	"	"
C 20	200 "	± 10	" V	"	R 20	50 K Ω	"	"
C 21	10.000 "	± 25	750 V	ceram.	R 21	1 M Ω	"	"
C 22	2.500 "	"	" V	"	R 22	20 K Ω	"	"
C 23	32 Mf	-10+70	350 VL	Elekt.	R 23	2 M Ω	"	"
C 24	340 pf	± 1	1000 V	ag.	R 24	0,1 M Ω	"	"
C 25	25 "	± 5	" V	"	R 25	2 M Ω	"	"
C 26	25 "	"	" V	"	R 26	1.000 Ω	"	"
C 27	2.500 "	± 25	750 V	ceram.	R 27	20 K Ω	"	"
C 28	200 "	"	1000 V	ag.	R 28	20 K Ω	"	"
C 29	200 "	"	" V	"	R 29	0,1 M Ω	"	"
C 30	10.000 "	± 25	750 V	ceram.	R 30	10 K Ω	"	"
C 31	10.000 "	"	" V	"	R 31	50 Ω	"	1
C 32	10.000 "	"	" V	"	R 32	50 Ω	"	1/4
C 33	150 "	± 10	1000 V	ag.	R 33	1 M Ω	"	"
C 34	200 "	"	" V	"	R 34	1 M Ω	"	"
C 35	200 "	"	" V	"	* R 35	1.500 Ω	"	"
C 36	10.000 "	± 25	750 V	ceram.	R 36	10 K Ω	"	"
C 37	25 "	± 5	1000 V	ag.	R 37	10 K Ω	"	"
C 38	45 "	"	" V	"	* R 38	500 Ω	"	"
C 39	40 "	± 10	" V	"	R 39	1 M Ω	"	"
C 40	10.000 "	-10+25	1500 V	carta	R 40	100 Ω	"	"
C 42	15.000 "	"	" V	"	R 41	0,1 M Ω	"	"
C 43	100.000 "	-10+25	1500 V	carta	R 42	0,25 M Ω	"	"
C 44	2.500 "	± 25	750 V	ceram.	RV 0,5 MΩ log. R 5459/3			
C 45	10 "	± 5	1000 V	ag.	RT 0,25 MΩ log. con interr. R 5459/2			
C 41	40 "	± 1	" V	"				
C 46	2.500 "	± 25	750 V	ceram.				
C 47	25.000 "	-10+25	1500 V	carta				
C 48	1.000 "	"	" V	"	L1 Bobina aereo FM	R 7238		
C 49	3.000 "	"	" V	"	L2 " interval. FM	R 7238/1		
C 50	340 "	5	1000 V	ag.	L3 " oscillat. FM	R 7238/2		
C 51	200 "	± 10	" V	"	L4 " di placca FM	R 7239		
C 52	100.000 "	-10+25	1500 V	carta	L5 MF. FM 10,7 MHz	R 7235		
C 53	10.000 "	"	" V	"	L6 MF. FM. 10,7 MHz	R 7236		
C 54	8 Mf	-10+70	350 VL	Elekt.	L7 Discriminatore	R 7234		
C 55	25 "	"	25 VL	"	L8 Bobina aereo 16-19 m.	R 7180		
C 56	100.000 pf	-10+25	1500 V	carta	L9 " " 25-31 m.	R 7181		
C 57	2.000 "	"	3000 V	"	L10 " " 41-50 m.	R 7182		
C 58	340 "	± 5	1000 V	ag.	L11 " " OM	R 7183		
C 59	340 "	"	" V	"	L12 " oscill. 16-19 m.	R 7184		
C 60	6 Mf	-10+70	100 VL	Elekt.	L13 " " 25-31 m.	R 7214		
C 61	2.000 pf	-10+25	1500 V	carta	L14 " " 41-50 m.	R 7186		
C 62	500.000 "	"	1000 V	"	L15 " " OM	R 7216		
C 63	32 Mf	-10+70	350 VL	Elekt.	L16-L17 MF. AM Tipo E1	R 5461		
C 64	32 "	"	" VL	"	L18-L19 Bobina filtro rete	R 7130		
C 65	2.000 pf	-10+25	3000 V	carta				
C 66	5.000 "	"	" V	"				
C 67	2.000 "	"	" V	"				
C 68	500 "	± 5	1000 V	ag.				
C 69	8 Mf	-10+70	450 VL	Elekt.				

C. V. Tipo 2CV4 speciale R 5312

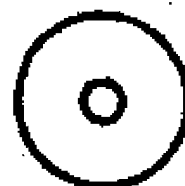
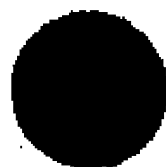
* Per R 35 e R 38 è stato indicato il valore medio, suscettibile di variante secondo le caratteristiche circuitali



EM4



EF42



EB41



EL6



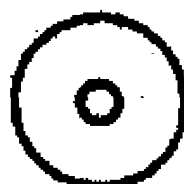
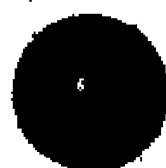
EBC41



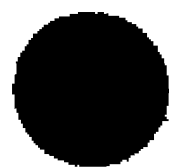
AZ2



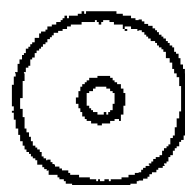
ECH42



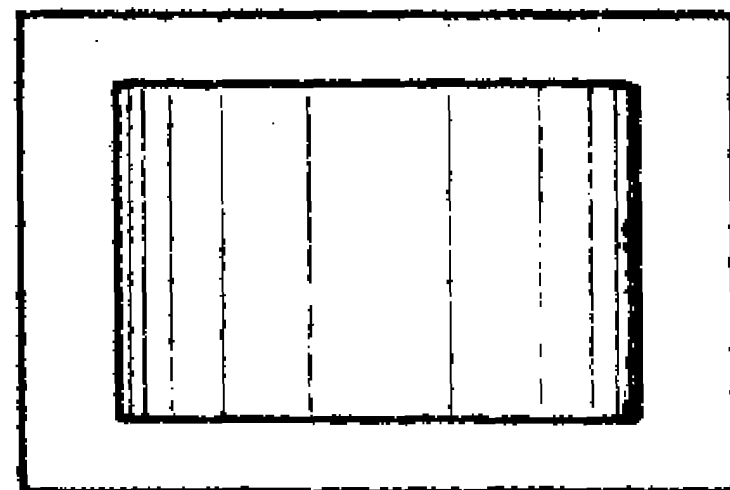
EF42



EF42



EF41



PHONOLA

Mod.

903

