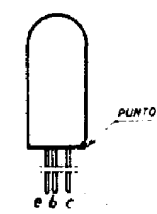
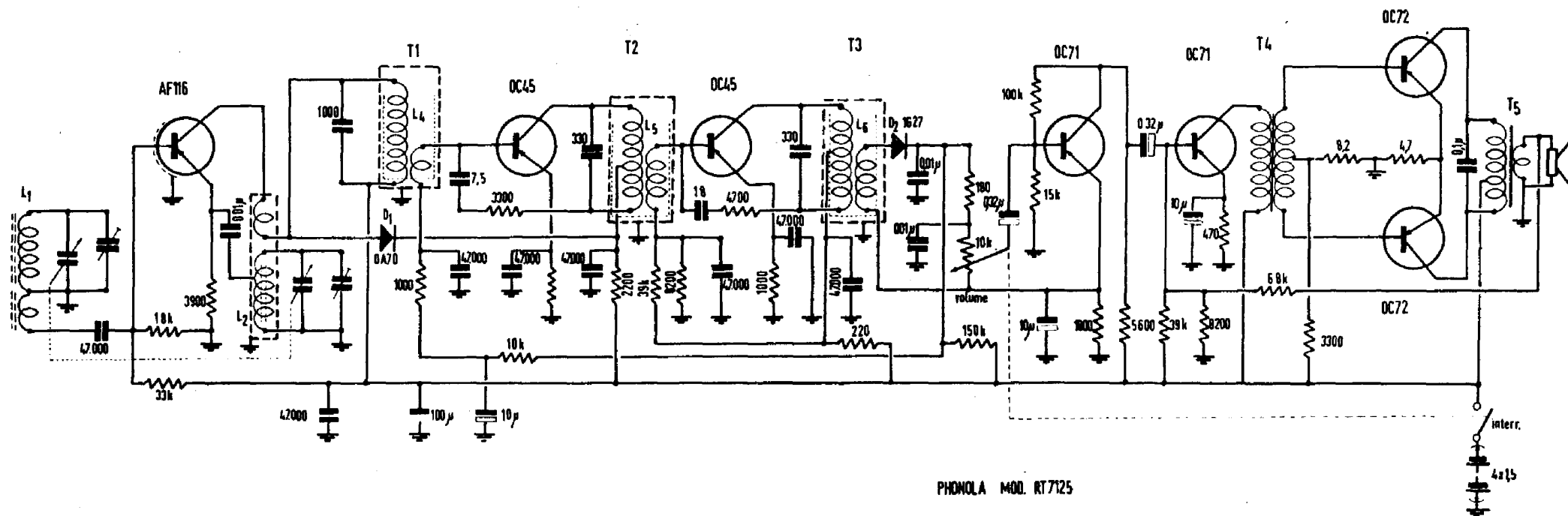


- RESISTORI**
- 1/2W
  - STYROFLEX 33W
  - CERAMICA 20V
  - CERAMICA 500V
  - POLISTERE 30V
- CONDENSATORI**
- 100pF
  - 10nF
  - 100nF
  - 1μF
  - 10μF
  - 100μF
  - 1mF
  - 10mF
  - 100mF
  - 1F



Tensioni riferite a massa misurate con voltmetro a valvola senza segnale RF in antenna.



PHONOLA Mod. RT 7125

Schema elettrico del radio ricevitore a transistori PHONOLA - Mod. RT 7125