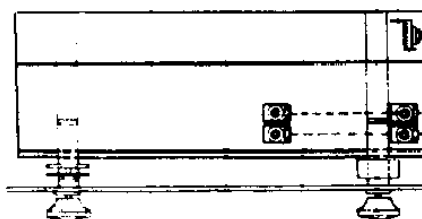
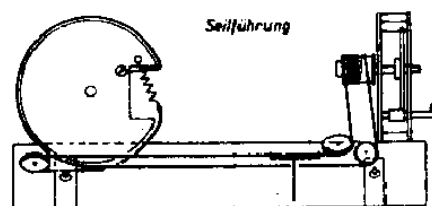
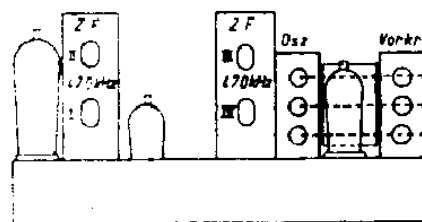


Sondyna Troubadour 43

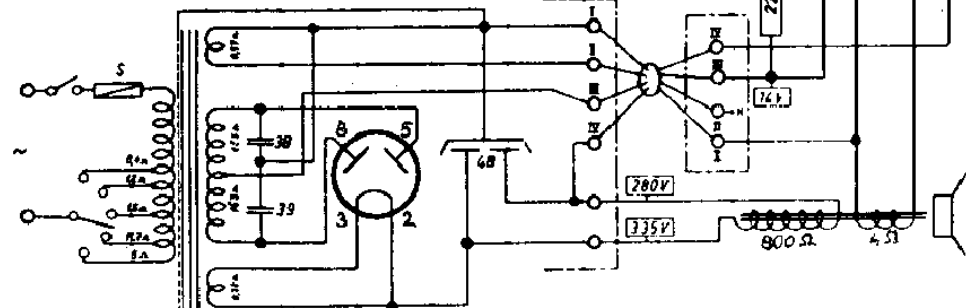
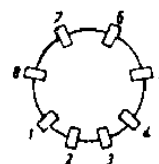


WELLENBEREICHE

MW. 520-1560kHz 192-577 Meter
KW 5,9-18 MHz 16,7-51 Meter

Zwischenfrequenz 470kHz

+Zeigerstellung auf cm-Skala



AZ 1

1 Sicherung S 800mA 5x20mm
2 Beleuchtungslempchen Type 3341
6,3V 0,3A

Sondyna A.G.
Zürich

Sondyna Troubadour 43

Kondensatoren

C 1	Glimmer	150 pf	± 10%
2	Glimmer	50 pf	± 10%
3	Trimmer	35-90 pf	
5	Trimmer	5-60 pf	255 N/1
6	Trimmer	5-60 pf	255 N/1
7	Drehko DUCATI EC	3408/283	
8	Papier	0,1 mf	500 V.
9	Papier	0,1 mf	1500 V.
10	Glimmer	50 pf	± 10%
12	Glimmer	457 pf	± 1%
13	Glimmer	150 pf	± 10%
14	Trimmer	5-60 pf	
15	Trimmer	5-60 pf	
18	Glimmer	100 pf	± 1%
19	Glimmer	100 pf	± 1%
20	Papier	0,05 mf	1500 V.
21	Elektrolyt	4 mf	450 V.
22	Papier	0,05 mf	1500 V.
23	Papier	0,05 mf	500 V.
24	Papier	2 x 0,3 mf	500 V.
25	Papier	0,05 mf	500 V.
26	Glimmer	150 pf	± 10%
27	Glimmer	50 pf	± 10%
28	Glimmer	100 pf	± 1%
29	Glimmer	100 pf	± 1%
30	Glimmer	100 pf	± 10%
31	Glimmer	100 pf	± 10%
32	Papier	0,05 mf	1500 V.
33	Papier	0,05 mf	1500 V.
35	Papier	3000 pf	2000 V.
36	Papier	1000 pf	2000 V.
37	Papier	1000 pf	2000 V.
38	Papier	5000 pf	2000 V. ~
39	Papier	5000 pf	2000 V. ~
40	Elektrolyt	100 mf	12 V.
41	Elektrolyt	8 mf	450 V.
42	Papier	0,1 mf	1500 V.
43	Elektrolyt	30 +30 mf	

Sondyna A.G.
Zürich

Widerstände

R 1	30 kOhm	2 Watt
2	100 "	$\frac{1}{4}$ "
3	50 k "	$\frac{1}{4}$ "
4	30 k "	1 "
5	0,1 m "	$\frac{1}{4}$ "
6	2,5 k "	1 "
7	50 k "	1 "
8	40 k "	$\frac{1}{4}$ "
9	0,1 m "	1 "
10	1 m "	$\frac{1}{4}$ "
11	1 m "	$\frac{1}{4}$ "
12	0,2 m "	$\frac{1}{4}$ "
13	0,3 m "	$\frac{1}{4}$ "
14	0,1 m "	$\frac{1}{4}$ "
15	2,5 k "	$\frac{1}{4}$ "
16	0,5 m "	$\frac{1}{4}$ "
17	0,5 m "	$\frac{1}{4}$ "
18	1 m "	$\frac{1}{4}$ "
19	0,1 m "	$\frac{1}{4}$ "
20	30 "	$\frac{1}{4}$ "
21	80 "	$\frac{1}{2}$ "
22	100 "	1 "
23	0,2 m "	$\frac{1}{4}$ "
24	0,1 m "	$\frac{1}{4}$ "
25	0,2 m "	$\frac{1}{4}$ "
26	0,5 m "	$\frac{1}{4}$ "
27	1 k "	1 "
28	1 m "	$\frac{1}{4}$ "
29	0,2 m "	$\frac{1}{4}$ "
30	100 "	$\frac{1}{4}$ "

P Potentionmeter
0,5 mOhm

Röhren:

ECH 4, ECH 4,
EBL 1, AZ 1.

Skalalämpchen:

2 x 6,3 V. 0,3 Amp.

Sicherung:

5 x 20 mm, 800 mA

Sondyna Troubadour 43

