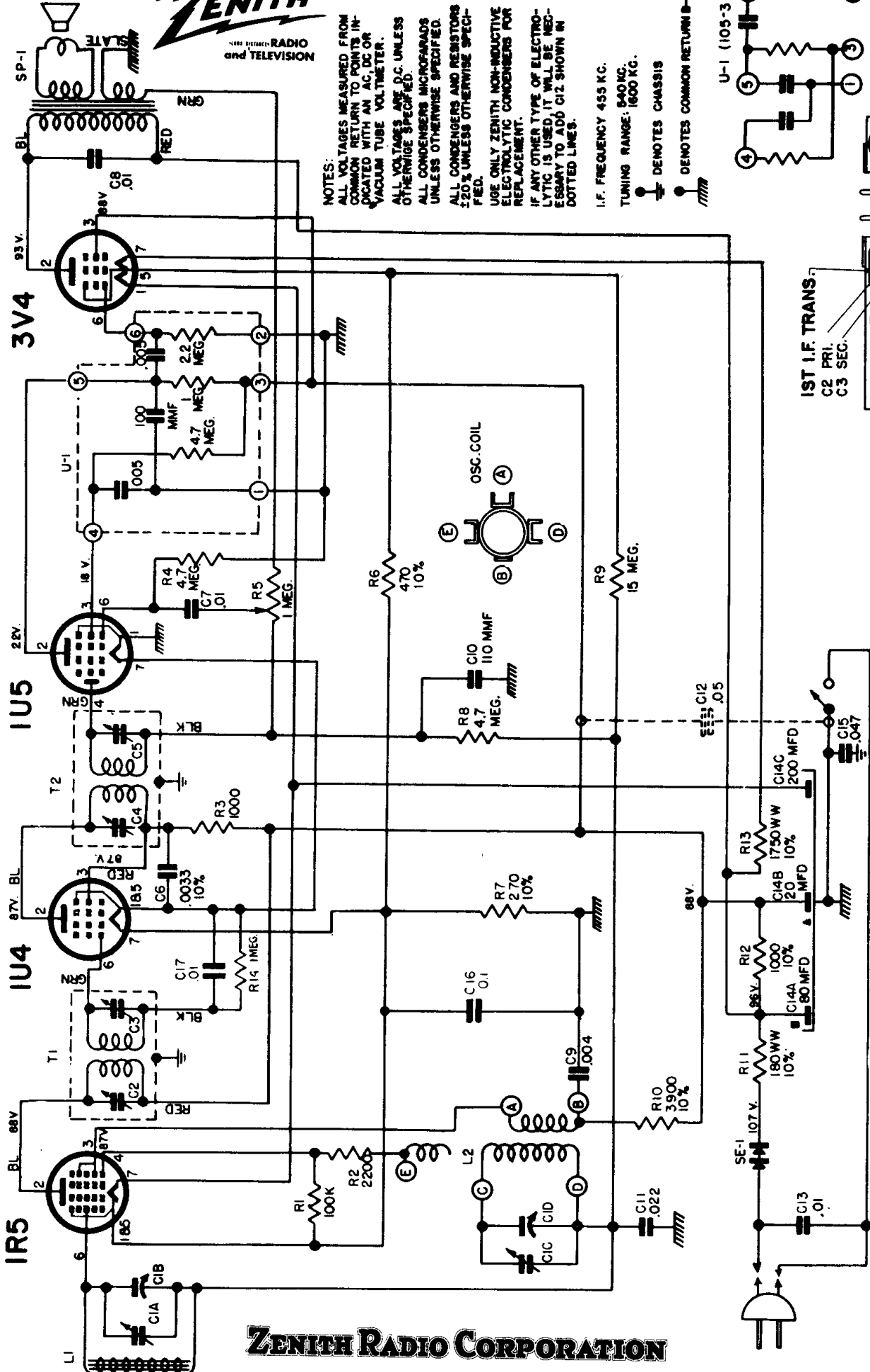
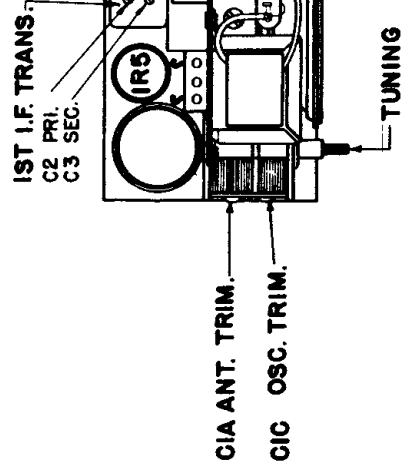
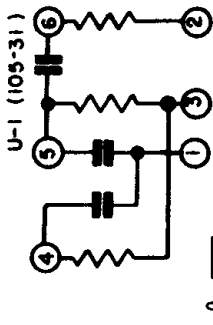


# MODEL K412 CHASSIS 4K01



**NOTES:**  
ALL VOLTAGES MEASURED FROM COMMON RETURN TO POINTS INDICATED WITH AN AC, DC OR VACUUM TUBE VOLTMETER.  
ALL VOLTAGES ARE D.C. UNLESS OTHERWISE SPECIFIED.  
ALL CONDENSERS MICROFARADS UNLESS OTHERWISE SPECIFIED.  
ALL CONDENSERS AND RESISTORS 120% UNLESS OTHERWISE SPECIFIED.  
USE ONLY ZENITH NON-INDUCTIVE ELECTROLYTIC CONDENSERS FOR REPLACEMENT.  
IF ANY OTHER TYPE OF ELECTROLYTIC IS USED, IT WILL BE NECESSARY TO ADD C12 SHOWN IN DOTTED LINES.  
I.F. FREQUENCY 455 KC.  
TUNING RANGE: 540 KC.  
DENOTES CHASSIS  
DENOTES COMMON RETURN B-



## ALIGNMENT PROCEDURE

OPERATION	CONNECT OSCILLATOR TO	DUMMY ANTENNA	INPUT SIG. FREQUENCY	SET DIAL AT	TRIMMERS	PURPOSE
1	Converter Grid	.5 Mfd.	455 Kc.	600 Kc.	C2, 3, 4 & 5	For I.F. Alignment
2	Single Turn Loosely Coupled to Wave Magnet	--	1600 Kc.	1600 Kc.	C1C	Set Oscillator to Dial Scale.
3		--	1400 Kc.	1400 Kc.	C1A	Antenna Alignment

ZENITH RADIO CORPORATION