

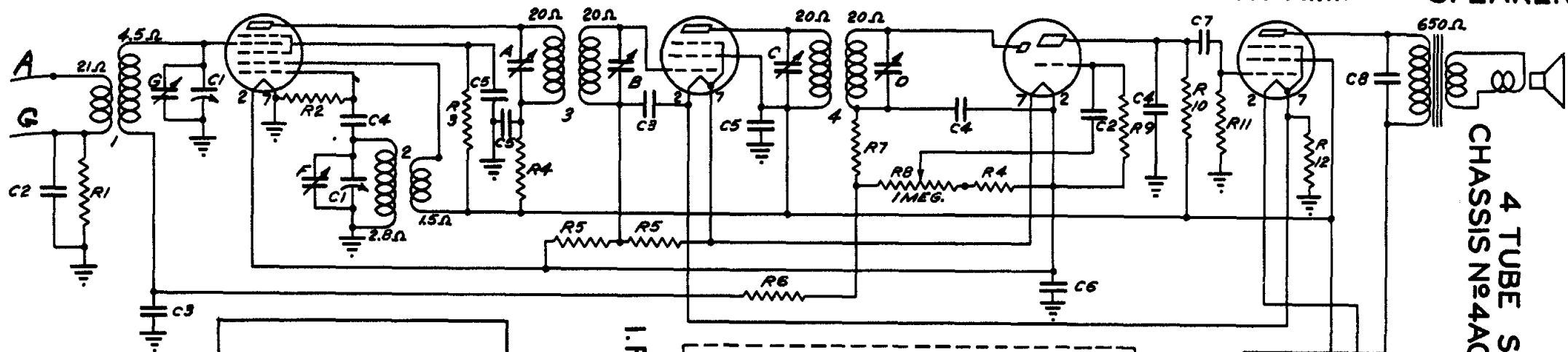
1A7G CONVERTER

IN5G I.F.

1H5G DET.-AMP

1Q5G PWR. AMP

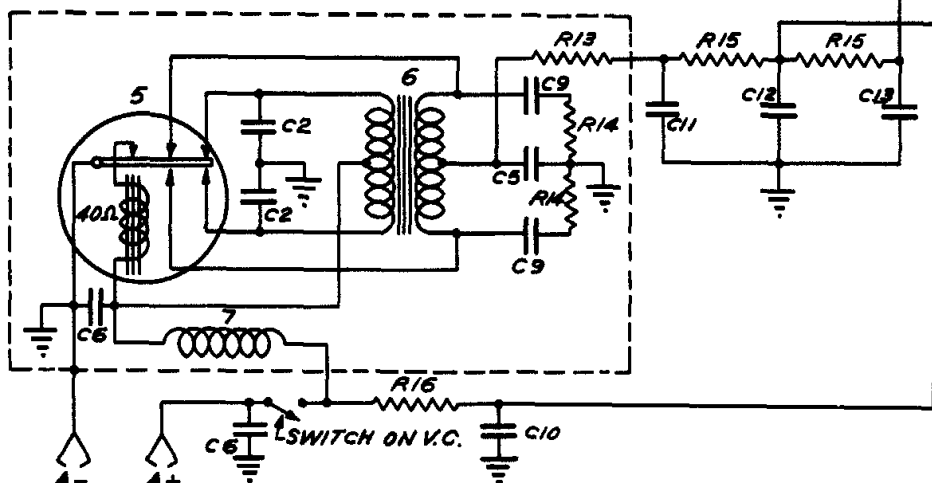
SPEAKER



4 TUBE SUPERHETERODYNE
CHASSIS No 4A01 & 4A03-6V-SINGLE BAND

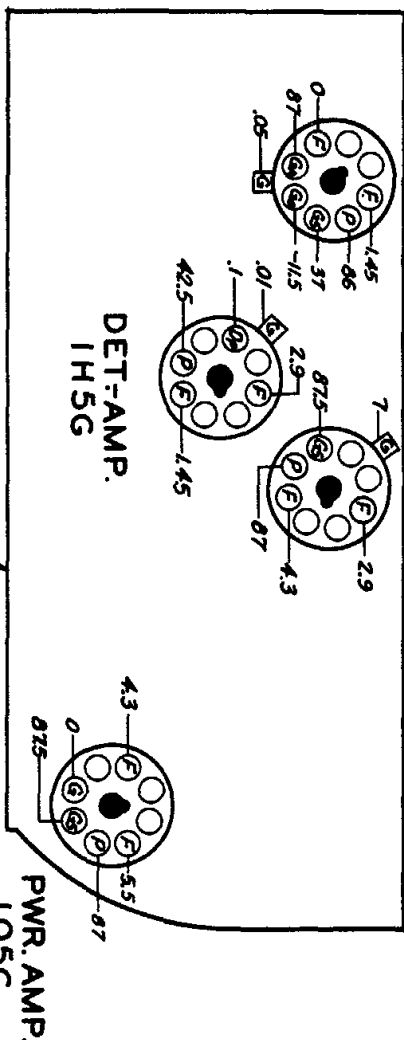
I.F. FREQUENCY 455 KC.

CONVERTER
1A7G
I.F.
IN5G



ZENITH RADIO CORPORATION

FRONT OF CHASSIS



DIAG. No	PART No	DESCRIPTION	DIAG. No	PART No	DESCRIPTION	DIAG. No	PART No	DESCRIPTION
C1	22-695	TWO GANG VARIABLE	R2	63-595	100M OHM	1	57681	ANTENNA COIL ASSEMBLY
C2	22-826	.01 MFD.	R3	63-594	68M OHM	2	56381	OSCILLATOR COIL ASSEM.
C3	22-829	.05 MFD.	R4	63-583	1000 OHM	3	95-589	127. I.F. TRANS.
C4	22-162	.0001 MFD.	R5	63-296	220M OHM	4	95-590	2ND I.F. TRANS.
C5	22-828	.05 MFD.	R6	63-669	3.9 MEGOHM	5	190-17	VIBRATOR
C6	22-199	.5 MFD.	R7	63-593	47M OHM	6	95-635	POWER TRANSFORMER
C7	22-243	.01 MFD.	R8	63-1079	VOLUME CONTROL	7	55043	CHOKE ASSEMBLY
C8	22-448	.004 MFD.	R9	63-976	15 MEGOHM			
C9	22-966	.04 MFD.	R10	63-271	1 MEGOHM			
C10	22-961	500MFD. ELECTROLYTIC	R11	63-600	2.2 MEGOHM			
C11		15MFD. ELECTROLYTIC	R12	63-1060	90OHM WIREWOUND			
C12	22-742	15MFD. ELECTROLYTIC	R13	63-577	100 OHM	A		1ST I.F. TRANS. PRI.
C13		10MFD. ELECTROLYTIC	R14	63-697	100 OHM	B		1ST I.F. TRANS. SEC.
R1	63-597	470M OHM	R15	63-605	1000 OHM	C		2ND I.F. TRANS. PRI.
			R16	63-1061	7 OHM	D		2ND I.F. TRANS. SEC.
						E		B'DCAST OSC. (ON GANG)
						F		ANT. B'DCAST (ON GANG)
						G		