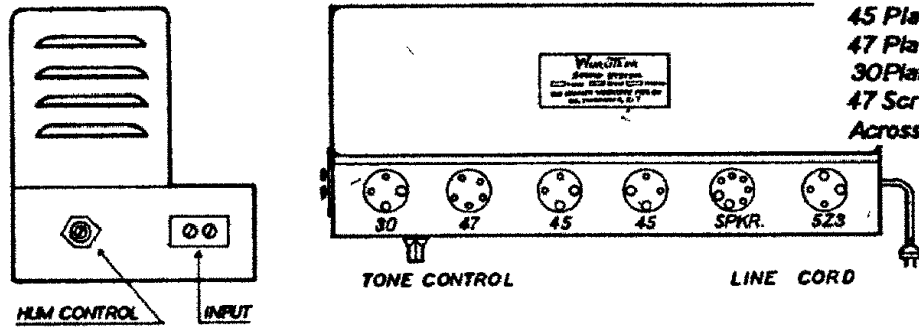


**SIMPLEX POWER AMPLIFIER**  
**MODEL 550**  
SERIAL NUMBER SERIES 5 500 001  
DRAWING NUMBER 97

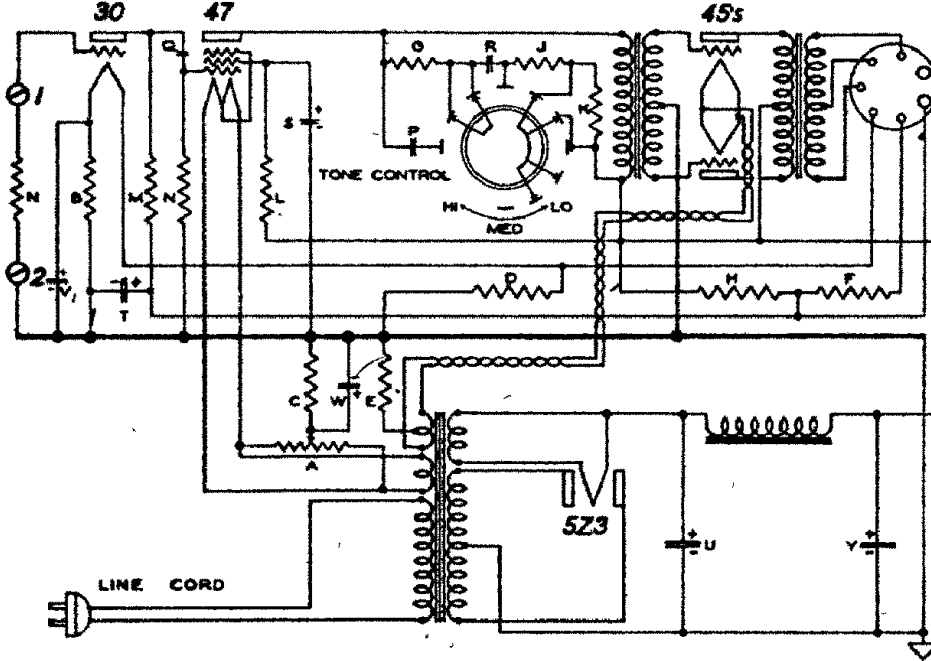
Measure all D.C. voltages from chassis with a 1000 ohm per volt meter with the line at 115 volts 60 cycles.

**AVERAGE D.C. VOLTAGES**

45 Plates	338v.	45 Bias	57.5v
47 Plate	313v.	47 Bias	19v.
30 Plate	75v.	30 Bias	4v.
47 Screen	294v.	5Z3 FIL	365v.
Across cond. Y	340v.	Across cond. T	170v.



END VIEW — MODEL 550 AMPLIFIER — TOP VIEW

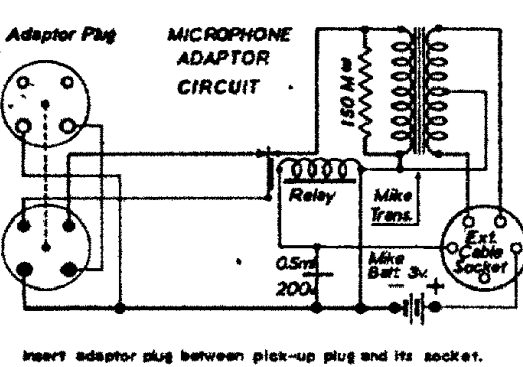
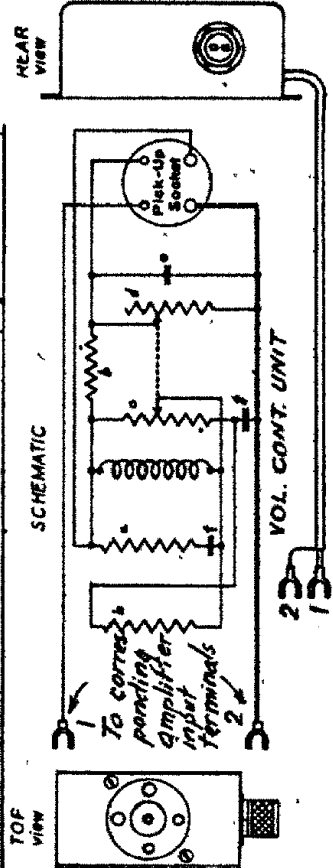


**LEGEND**

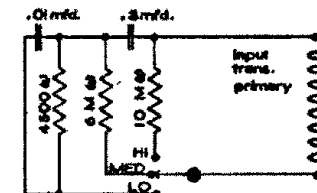
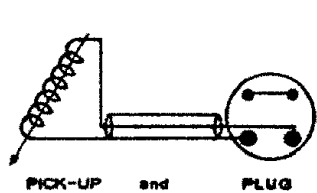
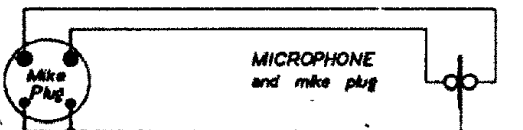
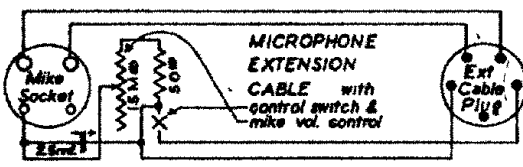
- Connection
- NO Connection
- Ground
- Ohm
- Kilohm
- Megohm

**PARTS LIST**

Amplifier unit	
A	20 M Hum Control
B	65 M w.w. res.
C	500 M w.w. res.
D	250 M volt. div.
E	775 M volt. div.
F	1850 M volt. div.
G	4500 M carbon.
H	7000 M volt. div.
J	1500 M carbon w/2
K	4 M carbon w/2
L	5 M carbon w/1
M	100 M carbon w/4
N	0.5 M carbon w/4
P	.01 mfd. 600v. paper
Q	.05 mfd. 400v. paper
R	.3 mfd. 400v. paper
S	2 mfd. 450v. dry
T	8 mfd. 200v. dry
U	5 mfd. 475v. wet
V	10 mfd. 25v. dry
W	25 mfd. 25v. dry
Y	30 mfd. 100v. wet
volume control unit	
a	15 M carbon w/4
b	50 M carbon w/4
c	50 M dual var.
d	150 M dual var.
e	0.0015 mfd. mica
f	0.004 mfd. mica
g	25 mfd. 200v. paper



Insert adaptor plug between pick-up plug and its socket.



**ELECTRICAL EQUIVALENT**  
not wiring equivalent  
**OF TONE CONTROL CIRCUITS**  
Presented only for simplicity of checking tone control operation.

