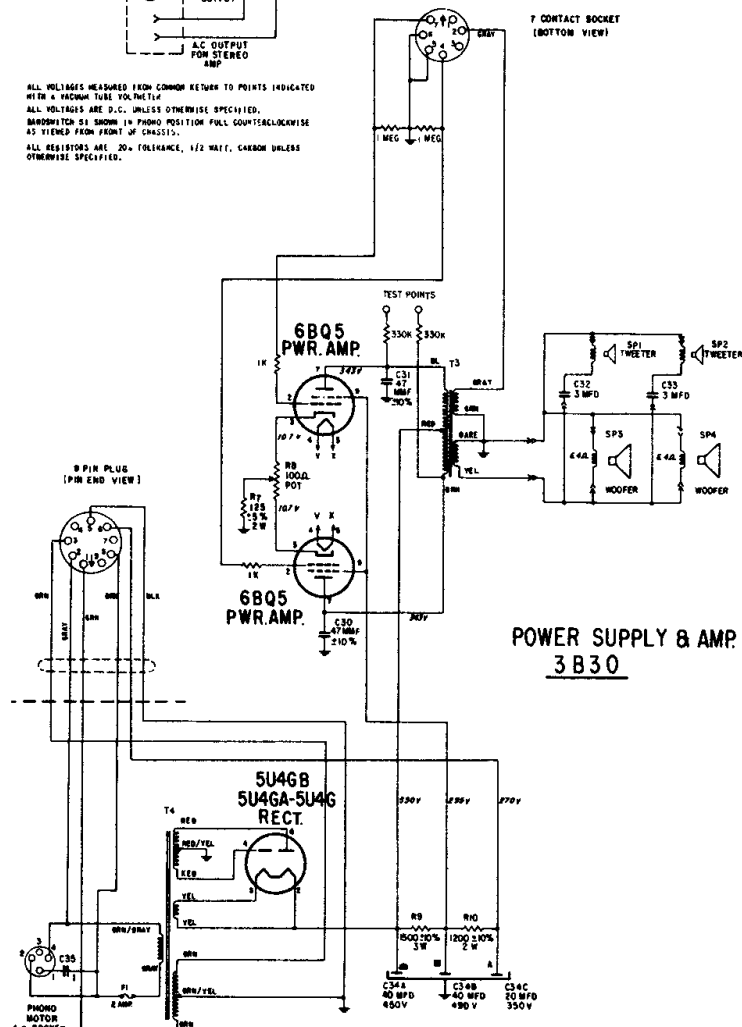
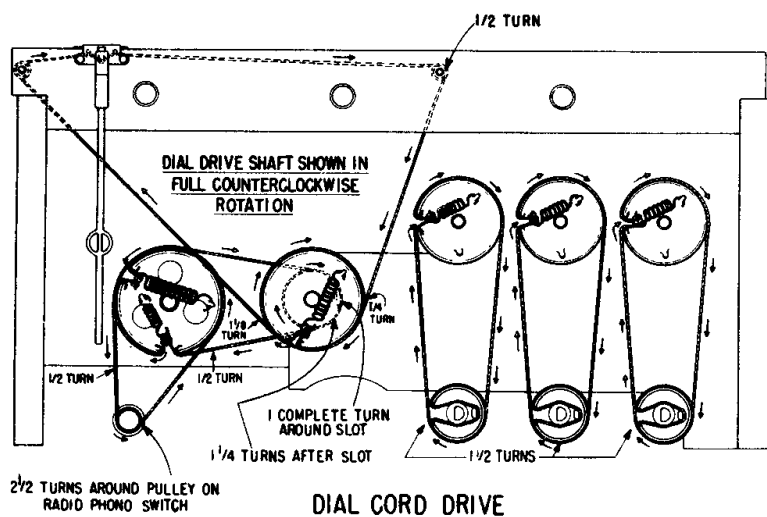
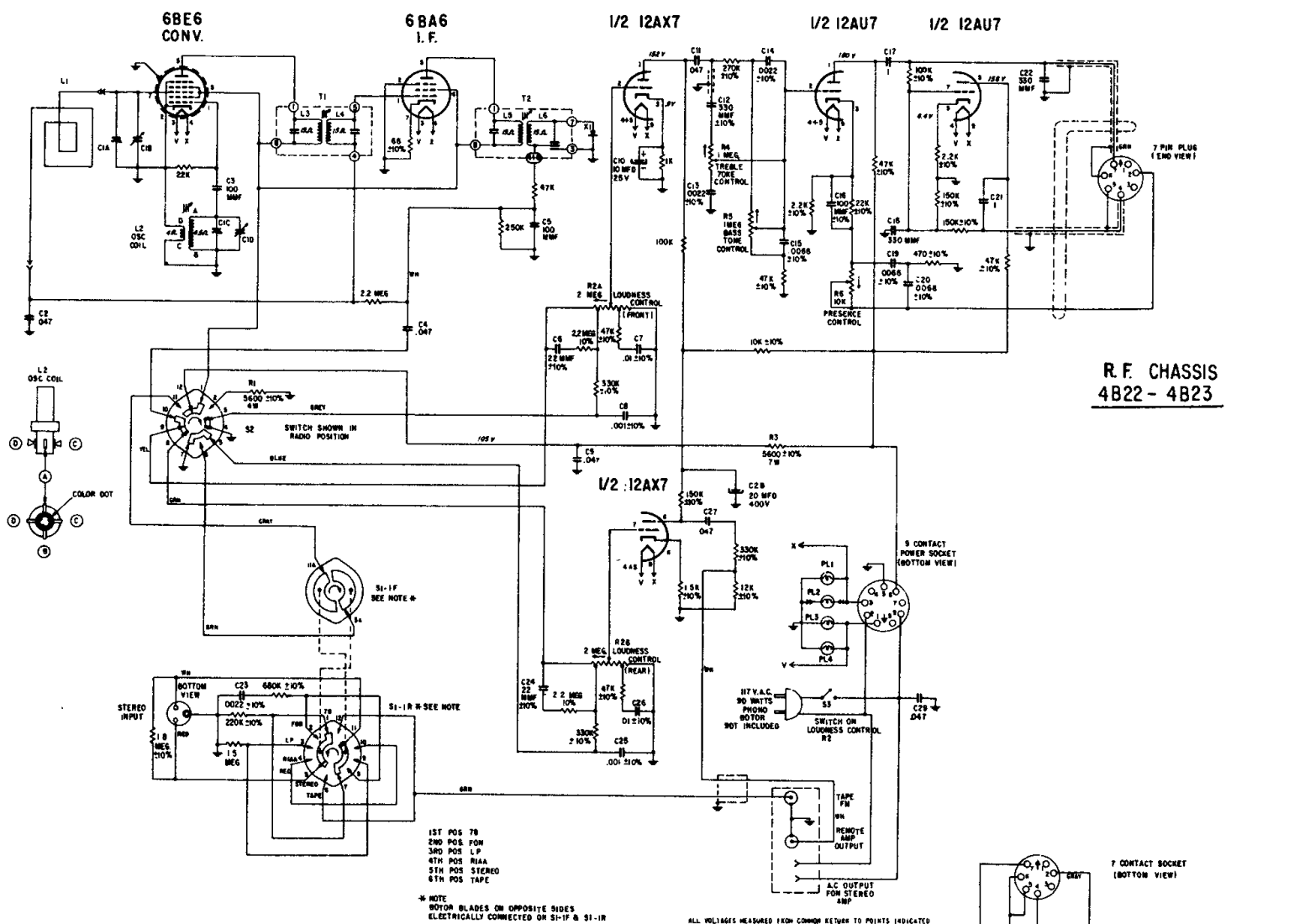


ZENITH Chassis 4B22Z and 3B30 used in Model SF174



ALIGNMENT PROCEDURE

<u>Operation</u>	<u>Connect Oscillator to</u>	<u>Dummy Antenna</u>	<u>Input Sig. Frequency</u>	<u>Set Dial at</u>	<u>Trimmers</u>	<u>Purpose</u>
1	Converter Grid	.5 Mfd.	455 Kc.	600 Kc.	L3,L4, L5,L6	Align I.F. for maximum output.
2	One turn loop coupled loosely to wave magnet	--	1600 Kc.	1600 Kc.	C1 D	Set osc. to dial scale
3		--	1400 Kc.	1400 Kc.	C1 B	Align antenna