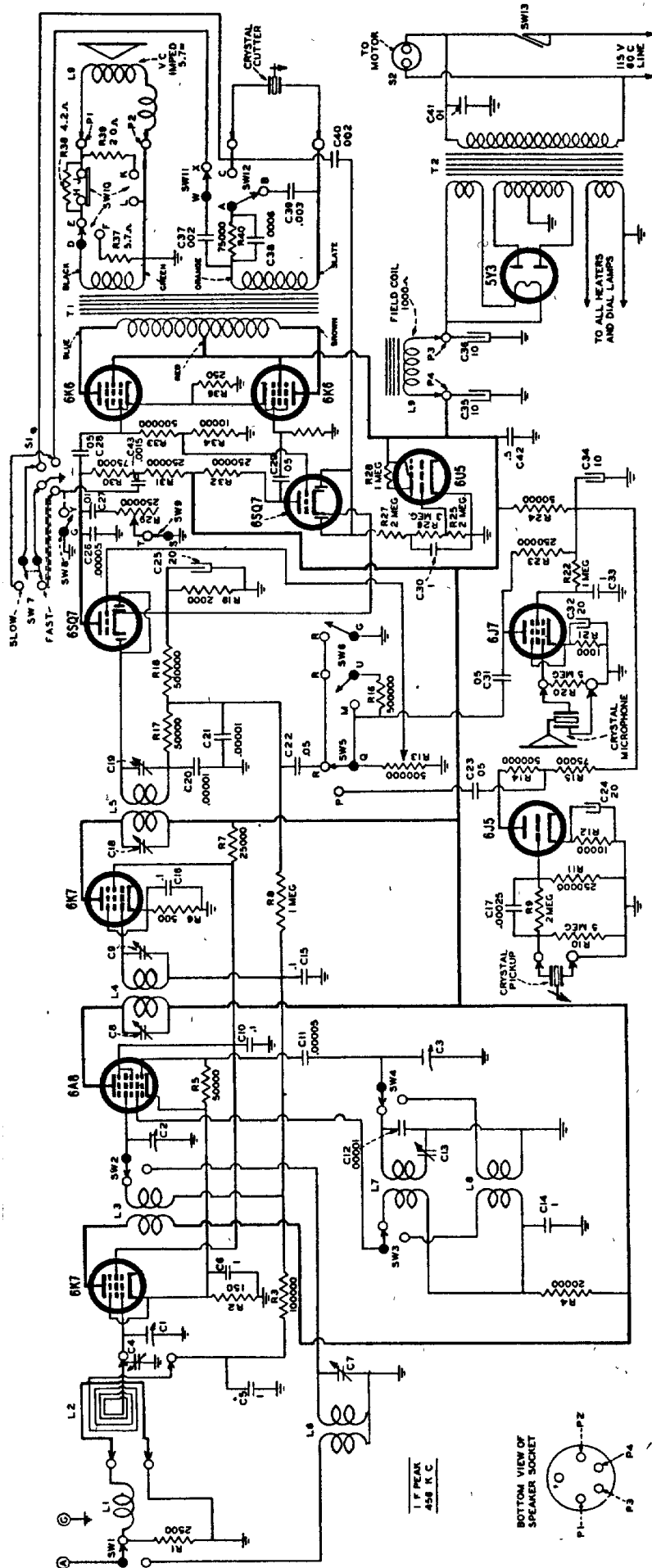


WILCOX-GAY CORP.



**FOR DATA ON INSTA-MATIC
RECORD CHANGER, SEE INDEX**

Line Voltage-----115
C36 to Gnd.-----355
C35 to GND.-----255
Speaker Field Voltage---100

Aerial Disconnected.
Volume Control - Minimum
All Voltage Measurements
made from noted point
to ground (chassis) except
as noted.

<u>Tube</u>	<u>Position</u>	<u>Plate</u>	<u>Screen</u>	<u>Cathode</u>	<u>GA</u>
6K7	R. F.	235	95	2.5	14C
6A8	1st. Detector	235	95	2.4	14C
6K7	I. F.	235	95	3.6	14C
6SQ7	2nd. Detector	165		-1.2	C3
6SQ7	1st. Audio	165		-1.2	C3
6J5	Phono Amp.	35*		.8	SP
6K6	Push Pull	225	235	20.	As
6K6	Audio	225	235	20.	Vc
5Y3	Rectifier			355.	Al
6J7	Speech Amp.	25*	30*	.8	ma