

Westinghouse

MODELS

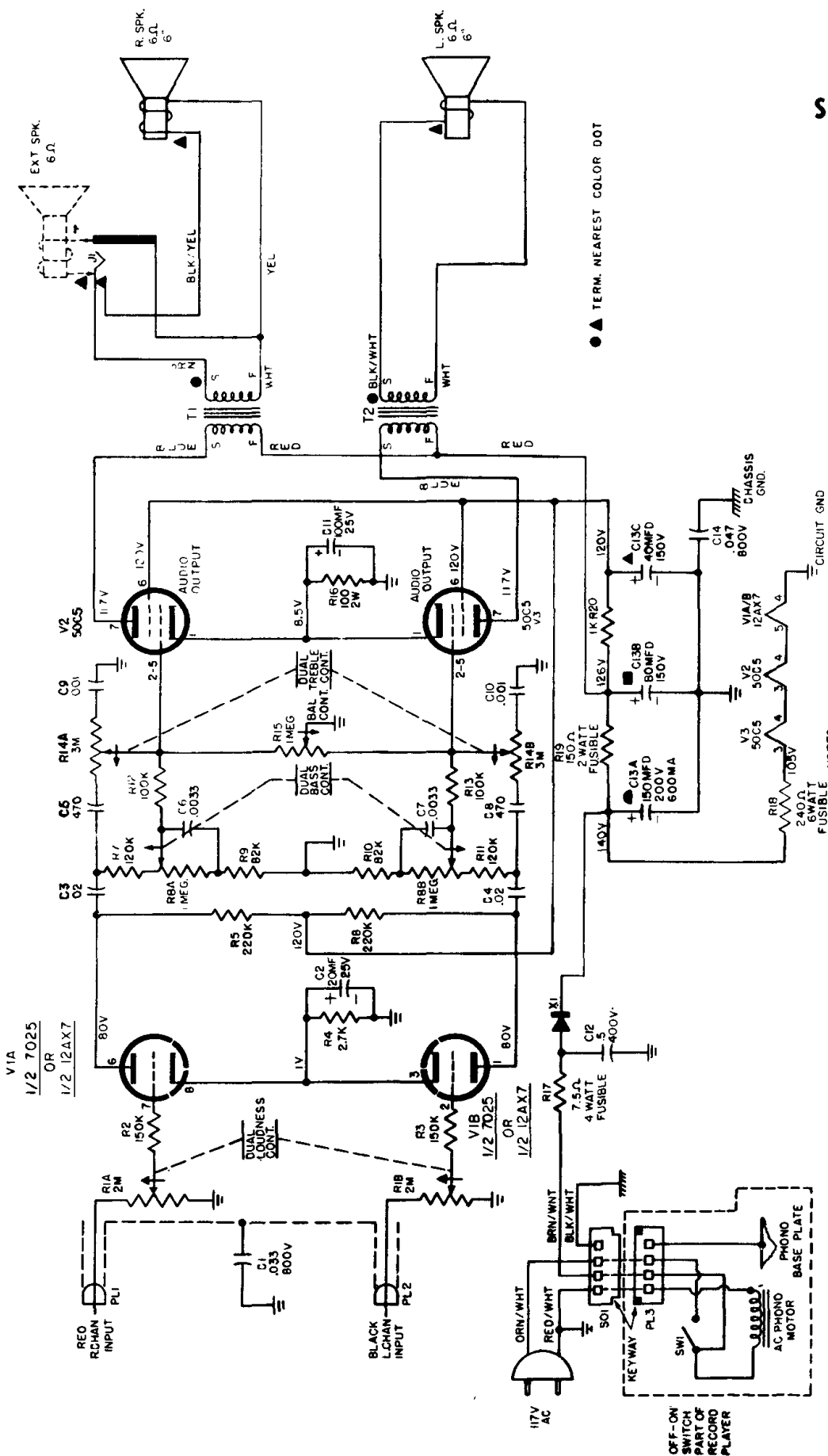
H-70ACS1A (mahogany)

H-70ACS3A (fruitwood)

H-70ACS4A (walnut)

CHASSIS V-2507-14

STEREO-PHONO CONSOLETTTE



- NOTES
1. 0.0 VOLTAGES MEASURED FROM CIRCUIT GROUND USING A V.T.M. LOUDNESS CONTROL AT MINIMUM
 2. ALL CAPACITANCE VALUES ARE IN MFD & ALL RESISTANCE VALUES IN OHMS, 1/2 WATT UNLESS OTHERWISE SPECIFIED
 3. BOTH TRANSFORMER WINDINGS ARE IN THE SAME DIRECTION

CHASSIS REMOVAL

1. Remove control knobs.
 2. Disconnect Amp-Lok type plug from record changer.
 3. Remove phono plugs from record changer noting color of cables and their respective jacks.
 4. Disconnect speaker leads noting connections with regard to lead color and speaker phasing dots.
 5. Remove two nuts securing left speaker baffle and remove baffle.
 6. Remove four nuts securing chassis and remove chassis.
- NOTE: Be sure during chassis installation that phono cables to changer and leads to speakers are properly phased (refer to schematic diagram for speaker lead color coding).

STYLUS REPLACEMENT

To remove the Stylus move the Stylus Handle until it points straight down from the bottom of the cartridge. Grasp the stylus handle close to the body of the cartridge and pull until the unit snaps out of the pressure fit grooves. To replace the stylus reverse the above procedure.

CARTRIDGE REPLACEMENT

1. Remove the two screws holding the cartridge to the tone arm.
2. Pry out the rear section of the cartridge to which the four wires are attached. Do not pull on the wires.
3. Insert the rear section into the new cartridge with the key on the rear section fitting the keyway slot in the cartridge.
4. Secure the new cartridge to the tone arm with the two screws.