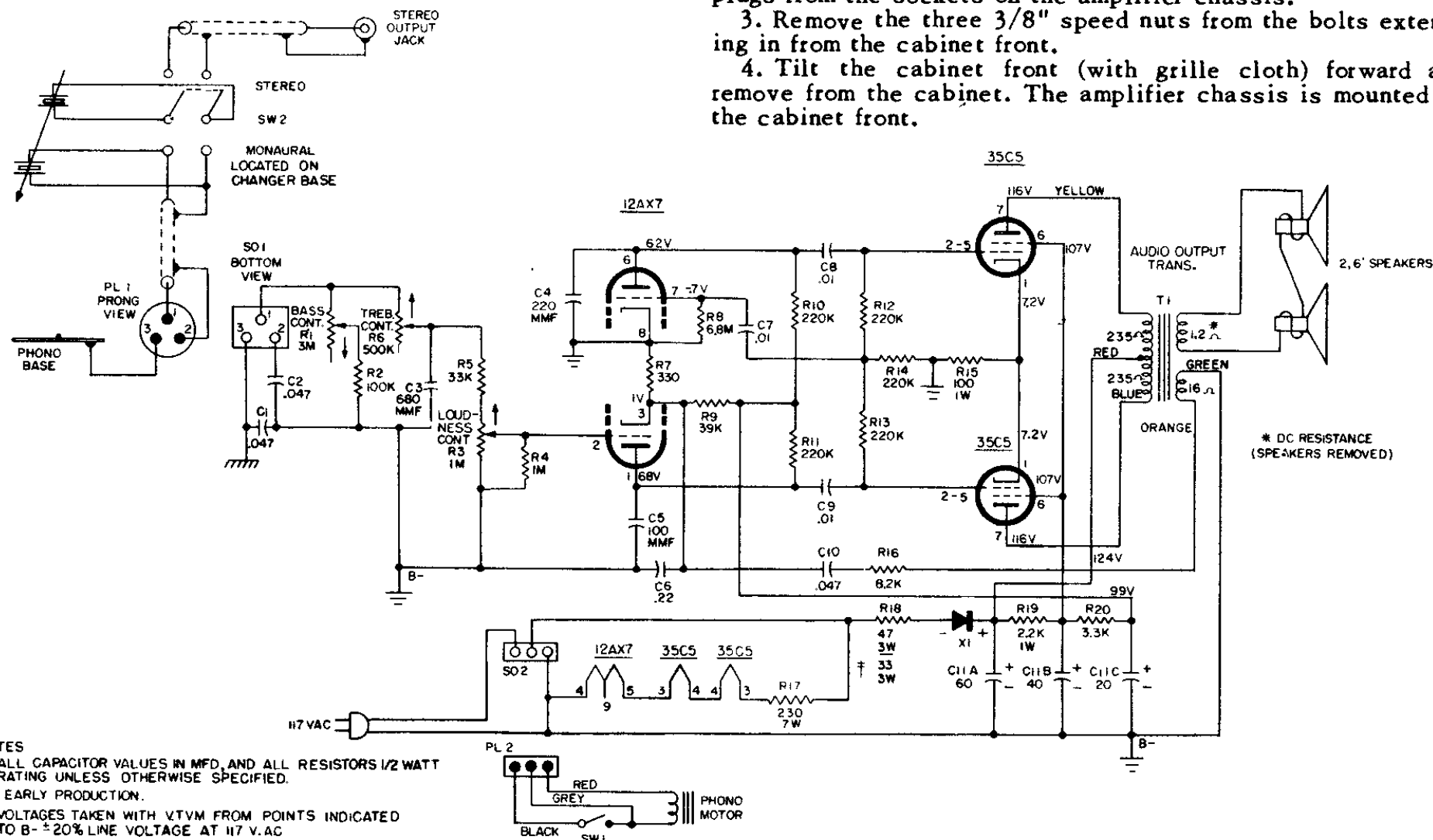


Westinghouse

Models H-45AC1A, H-45AC2A, Chassis V-2506-3



TUBE REPLACEMENT

To replace the vacuum tubes it is first necessary to remove the cover at the rear of the speaker baffle. This cover has ventilating holes and is secured by two phillips-head screws.

CHASSIS REMOVAL

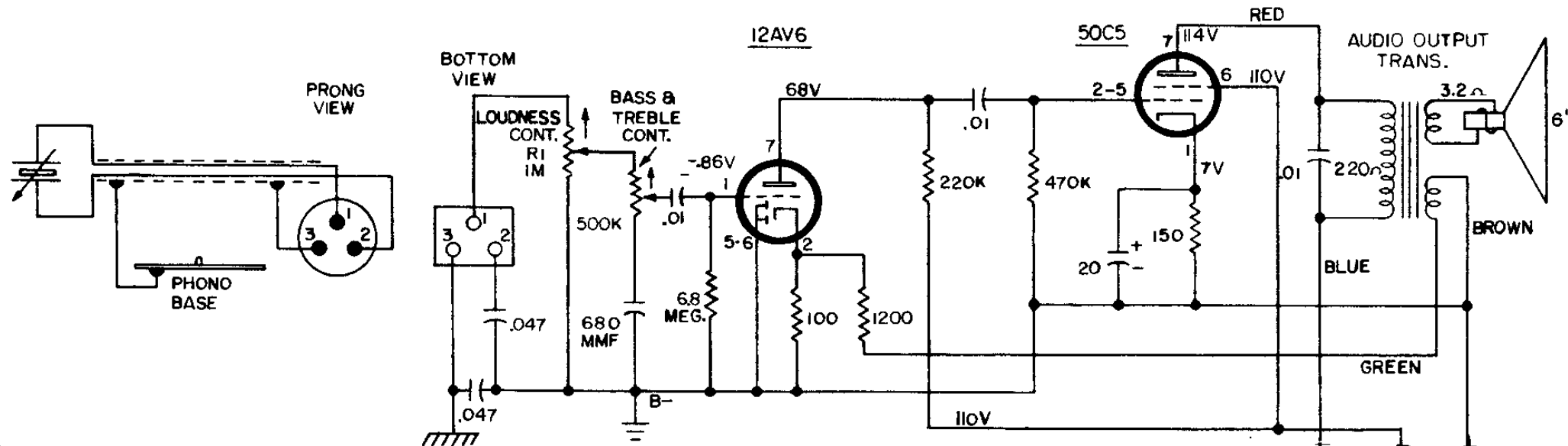
1. Remove the cover at the rear of the speaker baffle. This cover has ventilating holes and is secured by two phillips-head screws.

2. Remove the record changer mounting board. This is secured by four phillips-head screws, one in each corner of the board. Lift the board up and out of the cabinet. To completely detach the changer from the phonograph remove the two cable plugs from the sockets on the amplifier chassis.

3. Remove the three 3/8" speed nuts from the bolts extending in from the cabinet front.

4. Tilt the cabinet front (with grille cloth) forward and remove from the cabinet. The amplifier chassis is mounted on the cabinet front.

WESTINGHOUSE Models H-44AC1A, H-44AC2A, Chassis V-2506-2.



NOTE:

1. ALL CAPACITOR VALUES IN MFD, AND ALL RESISTORS IN OHMS
1/2 WATT RATING UNLESS OTHERWISE SPECIFIED.
2. VOLTAGES TAKEN WITH V.T.V.M. FROM POINTS
INDICATED TO B- $\pm 20\%$ LINE VOLTAGE AT 117 V.A.C

CHASSIS REMOVAL

1. Remove the cover at the rear of the speaker baffle. This cover has ventilating holes and is secured by two phillips-head screws.
2. Remove the record changer mounting board. This is secured by four phillips-head screws, one in each corner of the board. Lift the board up and out of the cabinet. To completely detach the changer from the phonograph remove the two cable plugs from the sockets on the amplifier chassis.
3. Remove the three 3/8" speed nuts from the bolts extending in from the cabinet front.
4. Tilt the cabinet front (with grille cloth) forward and remove from the cabinet. The amplifier chassis is mounted on the cabinet front.

